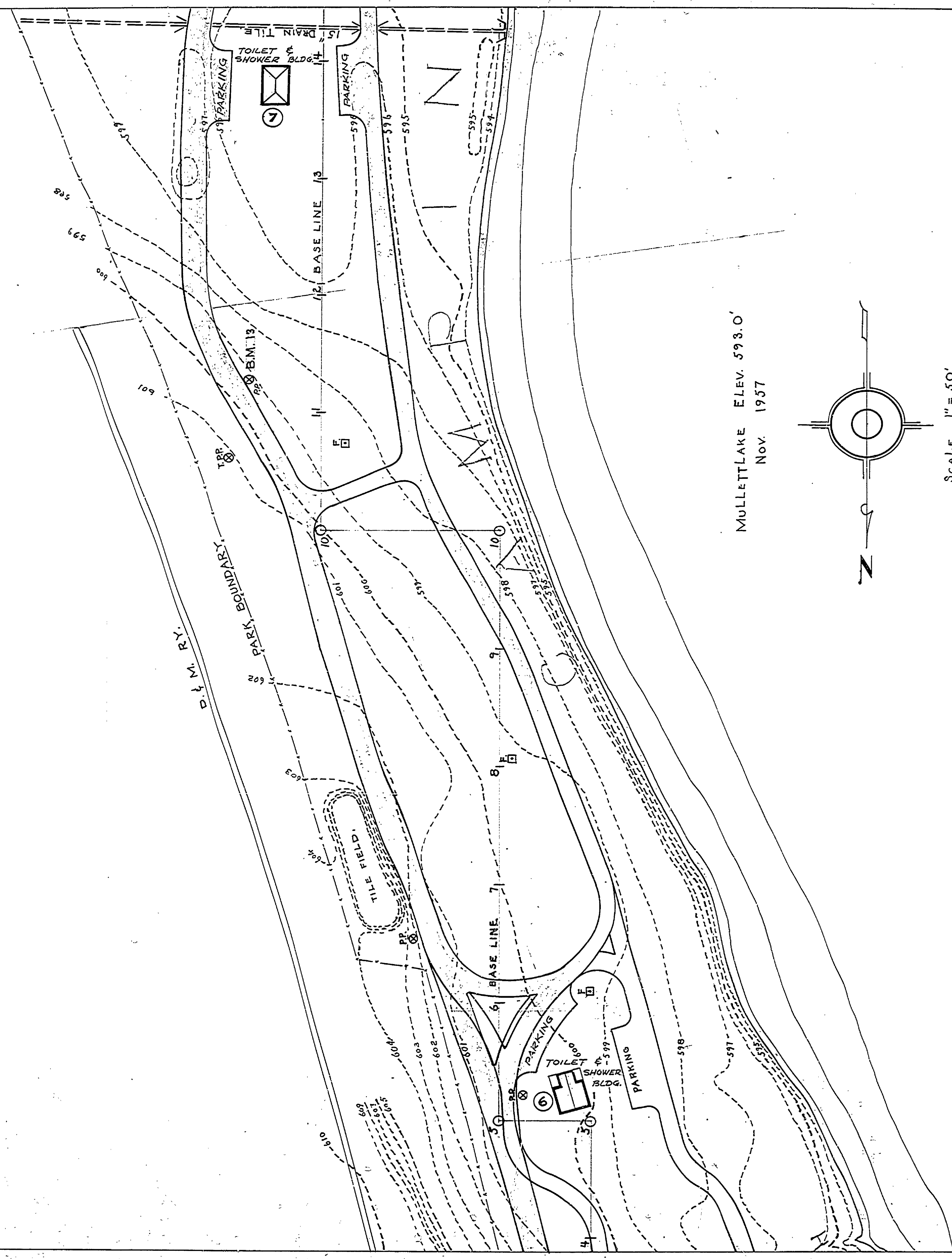


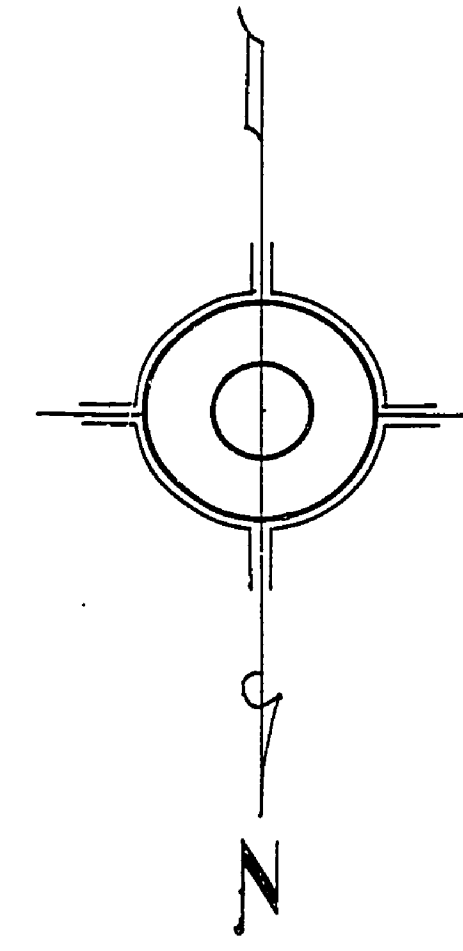
DESIGNED BY L. E. WIL	REVIEWED BY SECTIONS: ARCHITECTURAL ENGINEERING LANDSCAPE	APPROVED BY ASSISTANT CHIEF IN CHARGE	NO. DATE	REVISIONS	DATE BY
DATE JUN 15, 1958		OF DESIGN DATE	1	4	
			2	5	
			3	6	

B.M. 13, EL. 600.90  
 NAIL IN S.W. SIDE OF METER  
 TRANSFORMER POLE, LOCATED  
 115' S. OF CROSS ROAD AND 15' W.  
 OF E. CAMPGROUND ROAD.

C-SEC. 8 N. S. 1/4 SECTION LINE



MULLETT LAKE ELEV. 593.0'  
 NOV. 1957



SCALE 1" = 50'

MICHIGAN  
 DEPARTMENT OF CONSERVATION  
 PARKS AND RECREATION DIVISION

ALOHA STATE PARK TOPO. MAP  
 WITH MASTER PLAN OVERLAY  
 SCALE 1" = 50'

SHEET  
 NO. 2  
 OF 4

PLAN NO.  
 E-103