

DESIGNED BY	DATE	REVIEWED	DATE	APPROVED	NO.	DATE	BY
A. TAMMIZ	8/65	ARCHITECTURAL			1	7-24-65	A.M.
A. TAMMIZ	9/65	ENGINEERING	5-20-65		2	6-24-65	
A. TAMMIZ		ENGINEERING	7-11-65		3	6-24-65	

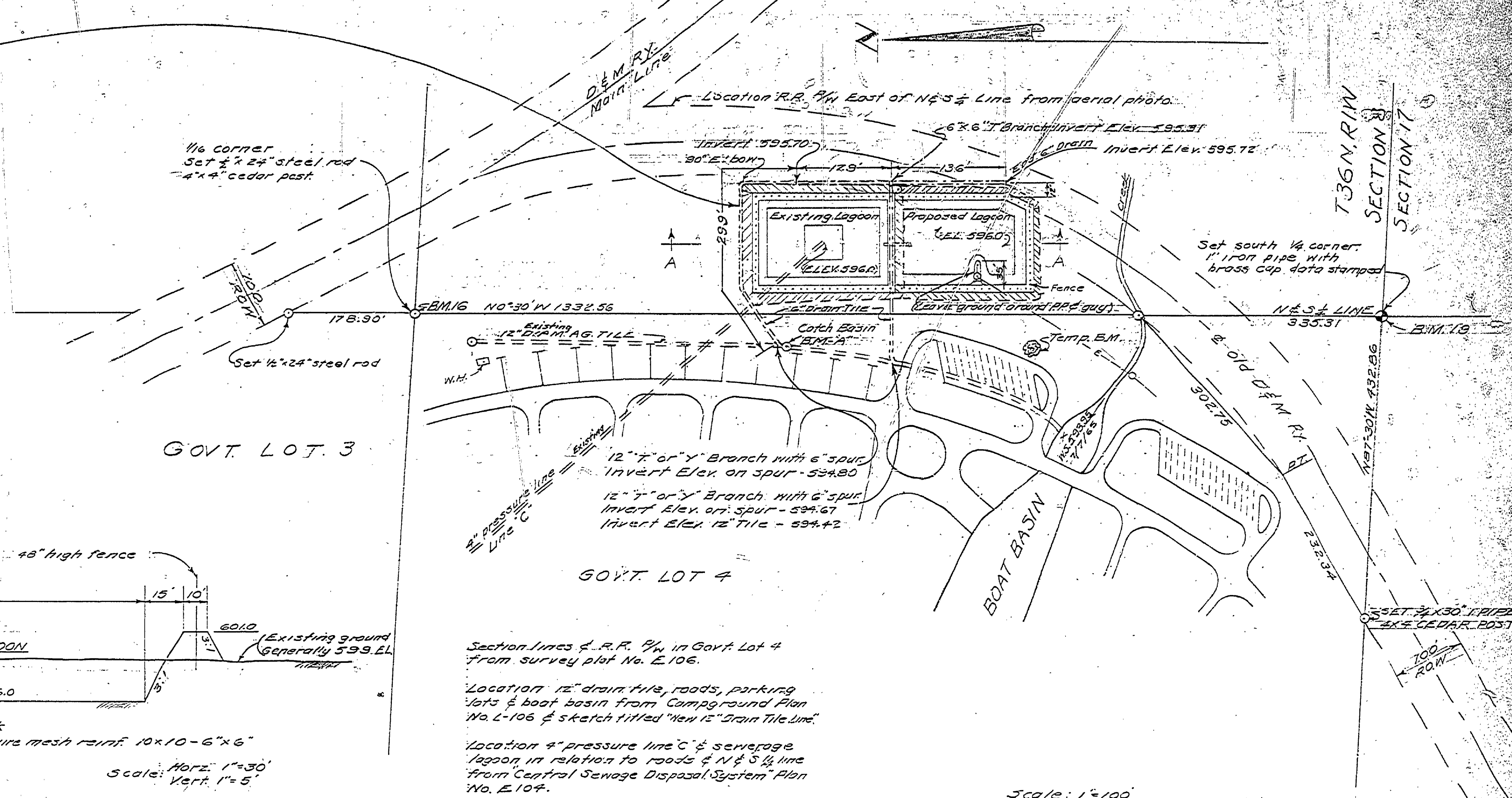
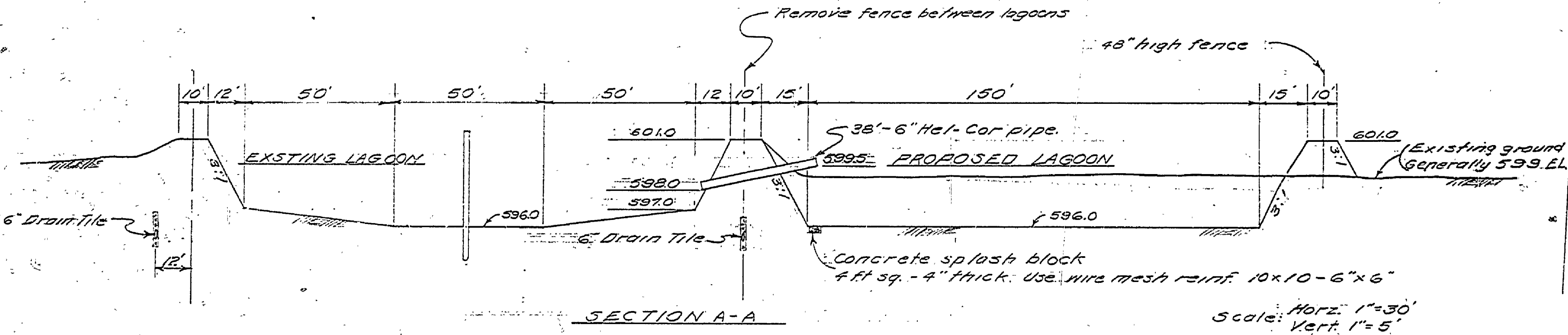
Place 6" vitrified field tile with open-end joints on 6" layer of M.S.A. 35 spec. 6A of 10A-20012 aggregate in 18" wide trench. Backfill to 12" above tile with the aggregate; continue backfill to ground surface with sand. Use 3% grades throughout.

B.M. 16 E.L. 596.42
Top of 1/2" x 24" steel rod
Located at 1/4 corner

B.M. 19 E.L. 600.10
Top of brass disk set in concrete.
Located at 3/4 corner, Sec. B

B.M. "A" E.L. 597.96
Chisled "A" on East rim 24" conc. riser
pipe of first catch basin N. of creek.
(12" drain tile)

Temp. B.M. E.L. 605.65
Stake nailed to N. side 10" Cedar
75' N. of 5' N. cor. proposed lagoon.



Section lines of R.R. 7/4 in Govt Lot 4 from survey plat No. E 106.

Location 12" drain tile, roads, parking lots & boat basin from Compground Plan No. L-106 & sketch titled "New 12" Drain Tile Line".

Location 6" pressure line 'C' & sewerage lagoon in relation to roads & N & S 1/4 line from Central Sewage Disposal System Plan No. E 104.

Scale: 1"=100'

MICHIGAN
DEPARTMENT OF CONSERVATION
PARKS AND RECREATION DIVISION

ALOHA STATE PARK
STORAGE LAGOON & 6" TILE DRAIN

SHEET NO. 1 OF 1
PLAN NO. E 104A