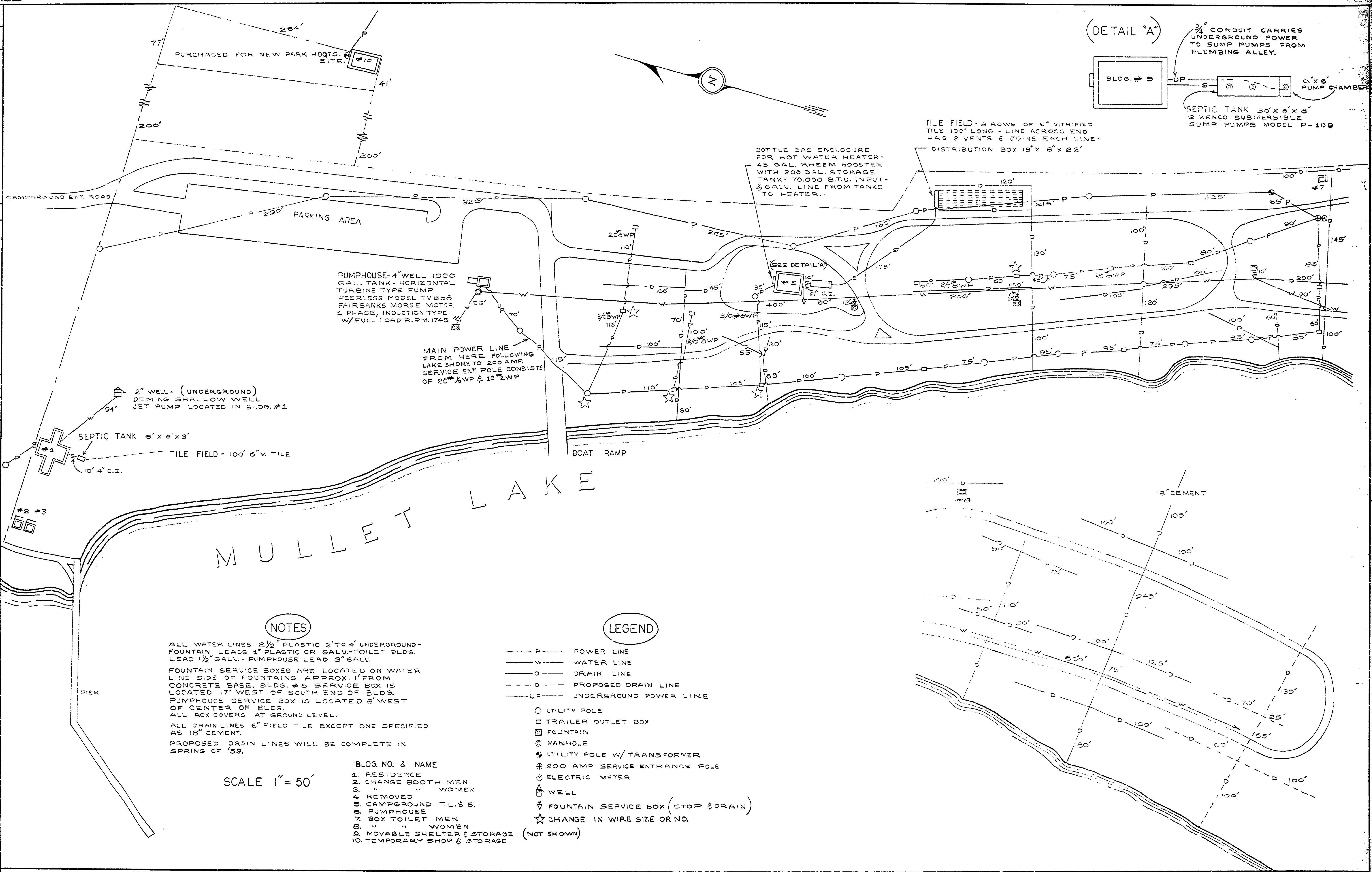


DATE BY					
NO. DATE BY	1	2	3	4	5
REVISIONS					
APPROVED BY	J.R.	J.R.	J.R.		
DATE	6-5-59	6-5-59	6-5-59		
REVIEWED BY SECTIONS	ARCHITECTURAL	ENGINEERING	LANDSCAPE		
ASSISTANT CHIEF IN CHARGE					
DATE OF DESIGN					
DRAWN BY	S. NOVAK				
TRACED BY					
CHECKED BY					
DATE	1/13/59				



**NOTES**

ALL WATER LINES 2 1/2" PLASTIC 3' TO 4' UNDERGROUND - FOUNTAIN LEADS 1" PLASTIC OR GALV. - TOILET BLDG. LEAD 1/2" GALV. - PUMPHOUSE LEAD 3" GALV.

FOUNTAIN SERVICE BOXES ARE LOCATED ON WATER LINE SIDE OF FOUNTAINS APPROX. 1' FROM CONCRETE BASE. BLDG. #5 SERVICE BOX IS LOCATED 17' WEST OF SOUTH END OF BLDG. PUMPHOUSE SERVICE BOX IS LOCATED 8' WEST OF CENTER OF BLDG. ALL BOX COVERS AT GROUND LEVEL.

ALL DRAIN LINES 6" FIELD TILE EXCEPT ONE SPECIFIED AS 18" CEMENT.

PROPOSED DRAIN LINES WILL BE COMPLETE IN SPRING OF '59.

- LEGEND**
- P — POWER LINE
  - W — WATER LINE
  - D — DRAIN LINE
  - - - D - - - PROPOSED DRAIN LINE
  - - - UP - - - UNDERGROUND POWER LINE
  - UTILITY POLE
  - TRAILER OUTLET BOX
  - ⊠ FOUNTAIN
  - ⊙ MANHOLE
  - ⊕ UTILITY POLE W/ TRANSFORMER
  - ⊕ 200 AMP SERVICE ENTRANCE POLE
  - ⊕ ELECTRIC METER
  - ⊠ WELL
  - ▽ FOUNTAIN SERVICE BOX (STOP & DRAIN)
  - ☆ CHANGE IN WIRE SIZE OR NO.

- BLDG. NO. & NAME**
1. RESIDENCE
  2. CHANGE BOOTH MEN
  3. " " WOMEN
  4. REMOVED
  5. CAMPGROUND T.L. & S.
  6. PUMPHOUSE
  7. BOX TOILET MEN
  8. " " WOMEN
  9. MOVABLE SHELTER & STORAGE (NOT SHOWN)
  10. TEMPORARY SHOP & STORAGE

SCALE 1" = 50'