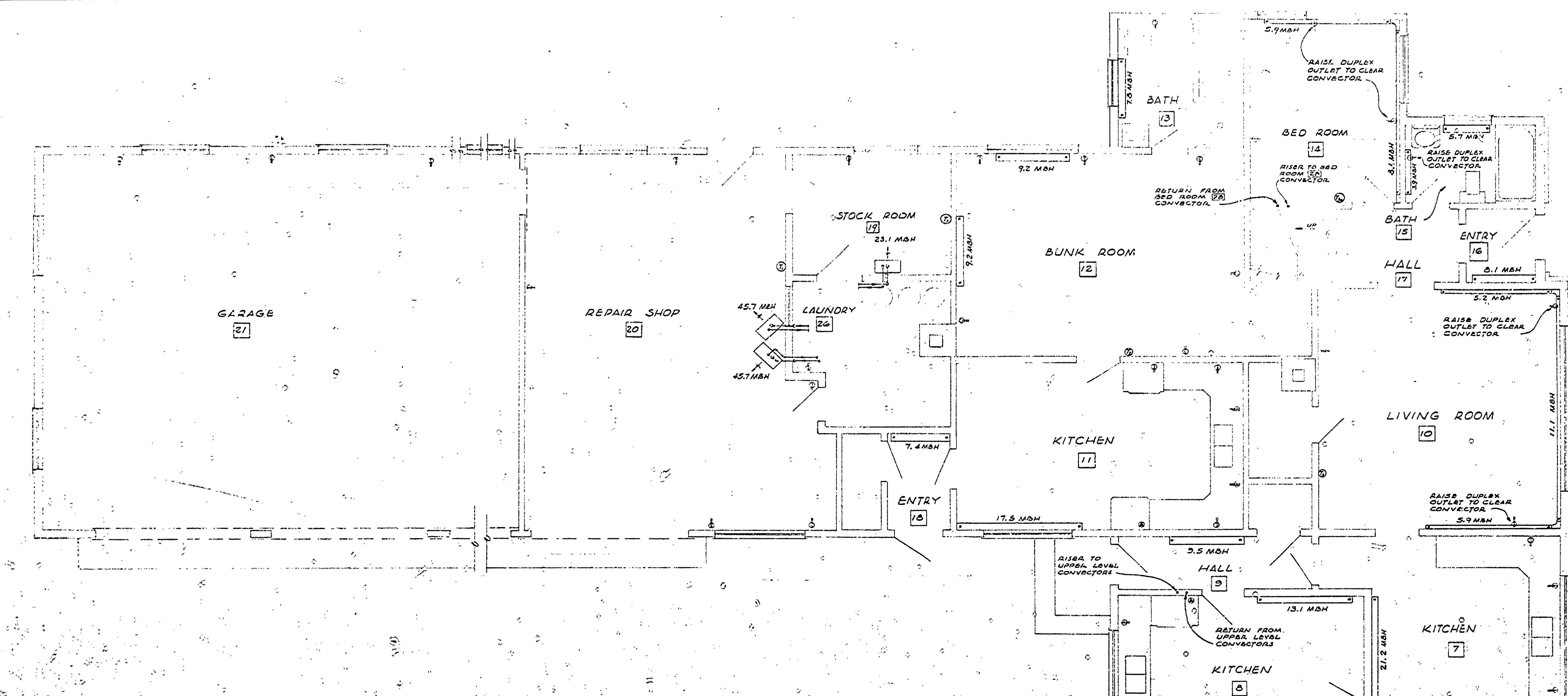


DESIGNED BY	DATE	REVIEWED	DATE	APPROVED	DATE	NO.	DATE BY	REVISIONS	DATE BY
W. H. HADLEY	2-1-62	ARCHITECTURAL				1		4	
W. H. HADLEY	2-1-62	ENGINEERING				2		5	
		LANDSCAPE				3		6	

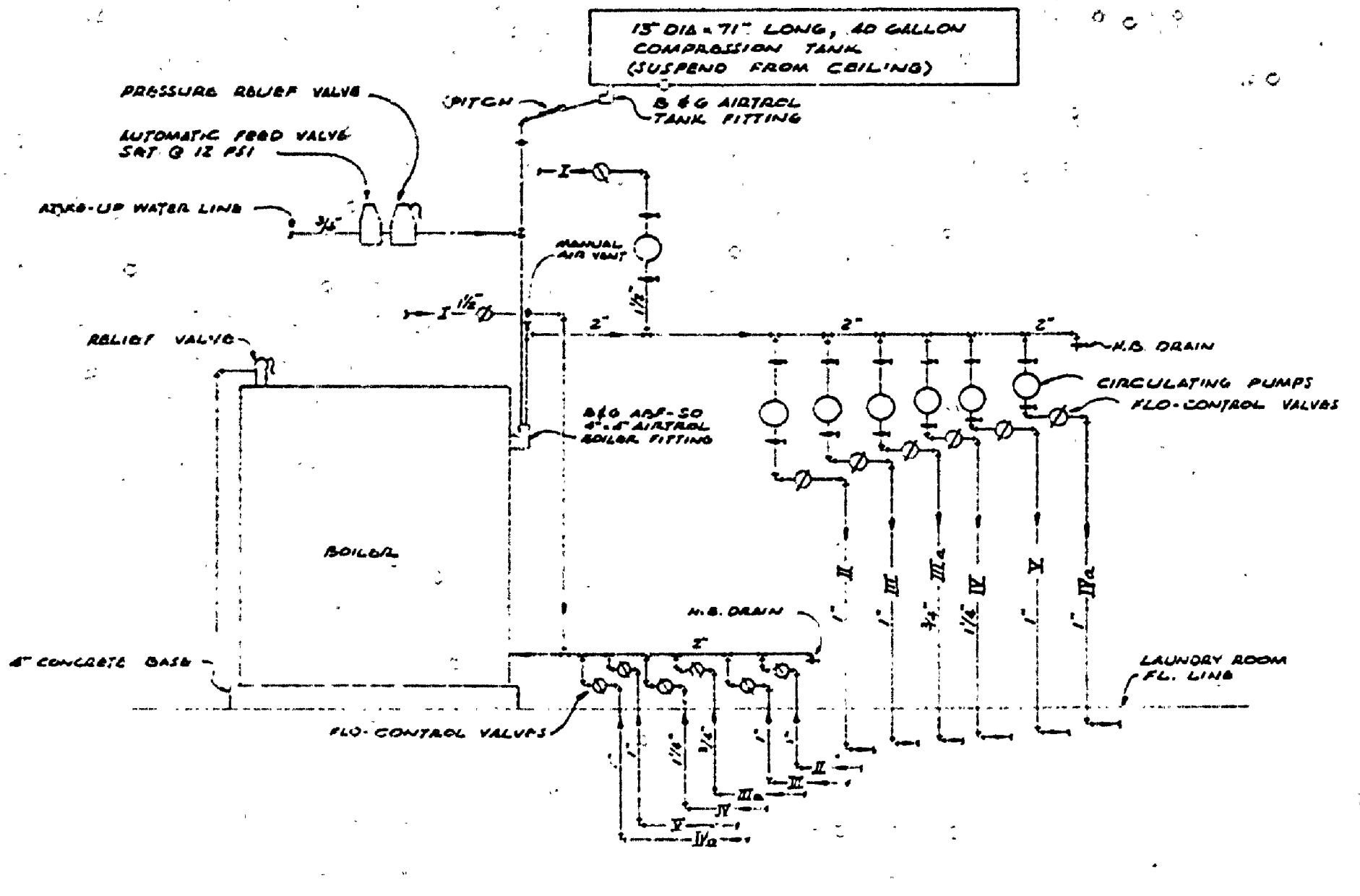


BOILER SPECIFICATIONS

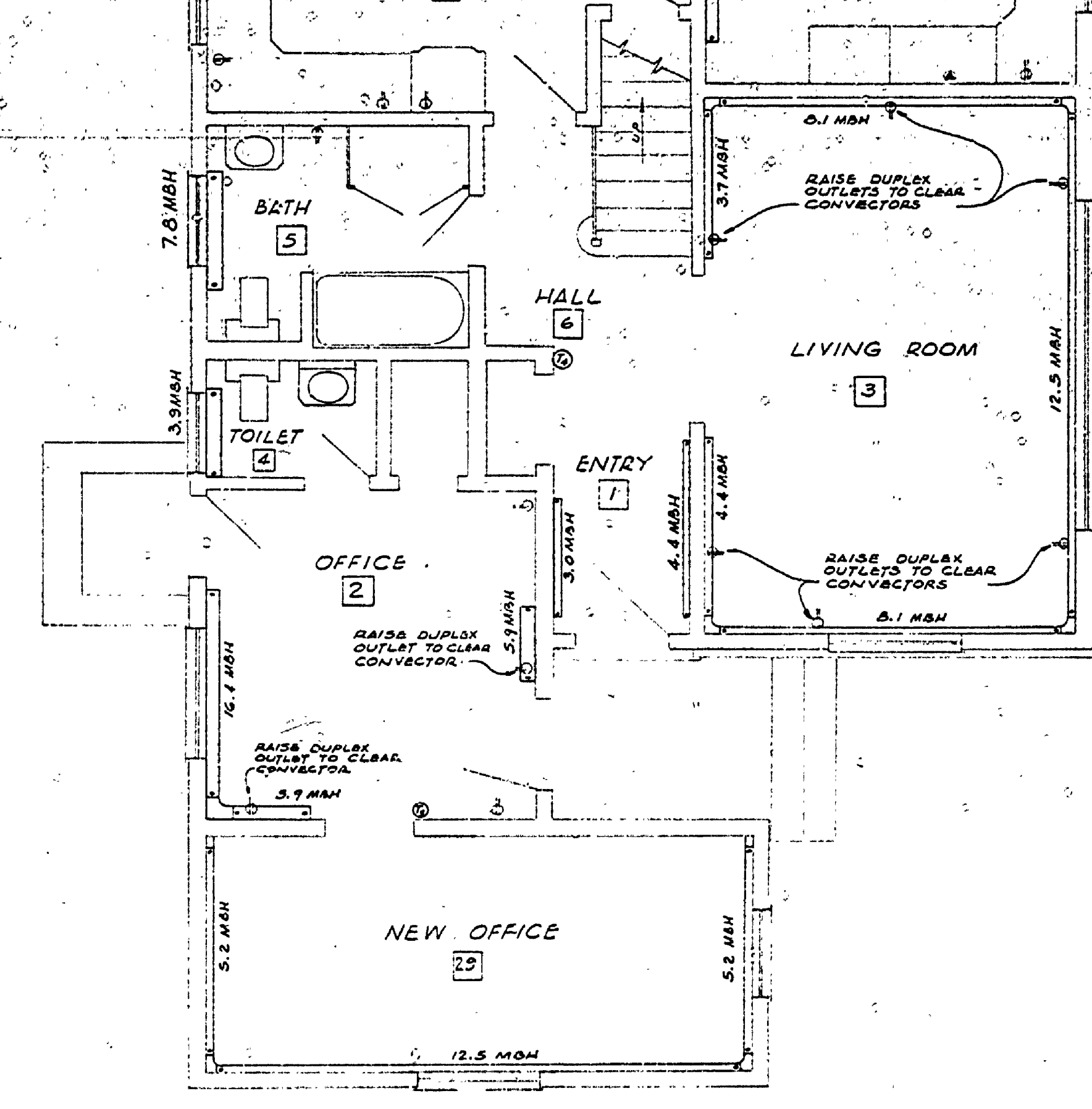
NATIONAL U.S. MODEL #12-W-44, OR APPROVED EQUAL, HOT WATER HEATING BOILER. A.G.A. GROSS RATING OF 742.5 MSH AND NET RATING OF 398 MSH. BOILER SHALL HAVE STANDARD AND COMPLETE TRIM FOR HOT WATER (LOW WATER CUT-OFF, COMBINATION PRESSURE GAUGE, ASME SAFETY VALVE, LIMIT CONTROL) AND STANDARD CONTROLS FOR LIQUEFIED PETROLEUM GAS (GAS VALVE, GAS PRESSURE REGULATOR, MAIN SHUT-OFF VALVE, PILOT LINE COCK, PILOT LINE GAS FILTER, SAFETY PILOT & AUXILIARY PILOT).

HOT WATER CIRCULATING PUMPS

- ZONE I - 2 1/2" 75" RATED FOR 11.5 GPM @ 6.8 FT. HEAD, 1/2 HP, 112/1160.
- ZONE II - 2 1/2" 75" RATED FOR 5.1 GPM @ 7.3 FT. HEAD, 1/2 HP, 112/1160.
- ZONE III - 2 1/2" 75" RATED FOR 5.2 GPM @ 7.3 FT. HEAD, 1/2 HP, 112/1160.
- ZONE IIIA - 2 1/2" 75" RATED FOR 3.2 GPM @ 7.9 FT. HEAD, 1/2 HP, 112/1160.
- ZONE IIII - 2 1/2" 75" RATED FOR 7.5 GPM @ 7.2 FT. HEAD, 1/2 HP, 112/1160.
- ZONE IIIIa - 2 1/2" 75" RATED FOR 4.5 GPM @ 11.7 FT. HEAD, 1/2 HP, 112/1160.
- ZONE V - 2 1/2" 75" RATED FOR 3.5 GPM @ 11.9 FT. HEAD, 1/2 HP, 112/1160.



BOILER PIPING DIAGRAM
NO. SCALE



FIRST FLOOR PLAN
SCALE 1/8"=1'-0"

PLANS PREPARED BY ENGINEERING ARCHITECTURE APPROVED <i>[Signature]</i> DATE 2-3-62 ENGINEER IN CHARGE	MICHIGAN DEPARTMENT OF CONSERVATION PARKS AND RECREATION DIVISION	TAHUQUAMENON FALLS STATE PARK STAFF QUARTERS, GARAGE AND SHOP BLDG. HEATING	SHEET NO. <u> </u> OF <u> </u>	PLAN NO. A-103
--	---	---	--	--------------------------