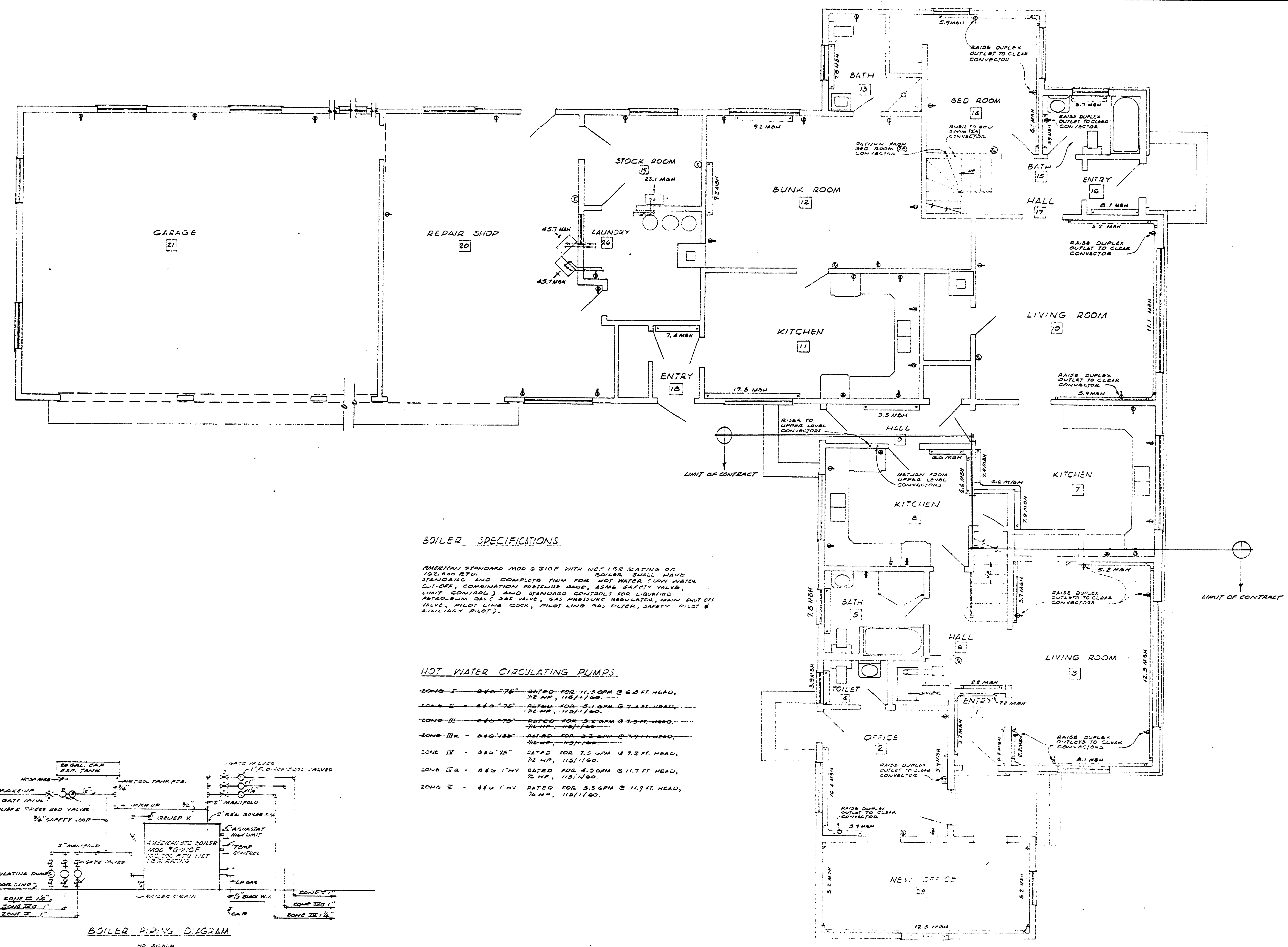


DESIGNED BY	DRAWN BY	CHECKED BY	DATE	REVIEWED	DATE	APPROVED	NO.	DATE	REVISIONS	DATE	BY
W. H. DOLAN	M. H. DOLAN		2-1-62	ARCHITECTURAL	7-10-63	<i>[Signature]</i>	1	7-10-63	1		
			2-1-62	ENGINEERING	7-11-63	<i>[Signature]</i>	2		2		
				LANDSCAPE	7-11-63	<i>[Signature]</i>	3	7-11-63	3		
							4		4		
							5		5		
							6		6		

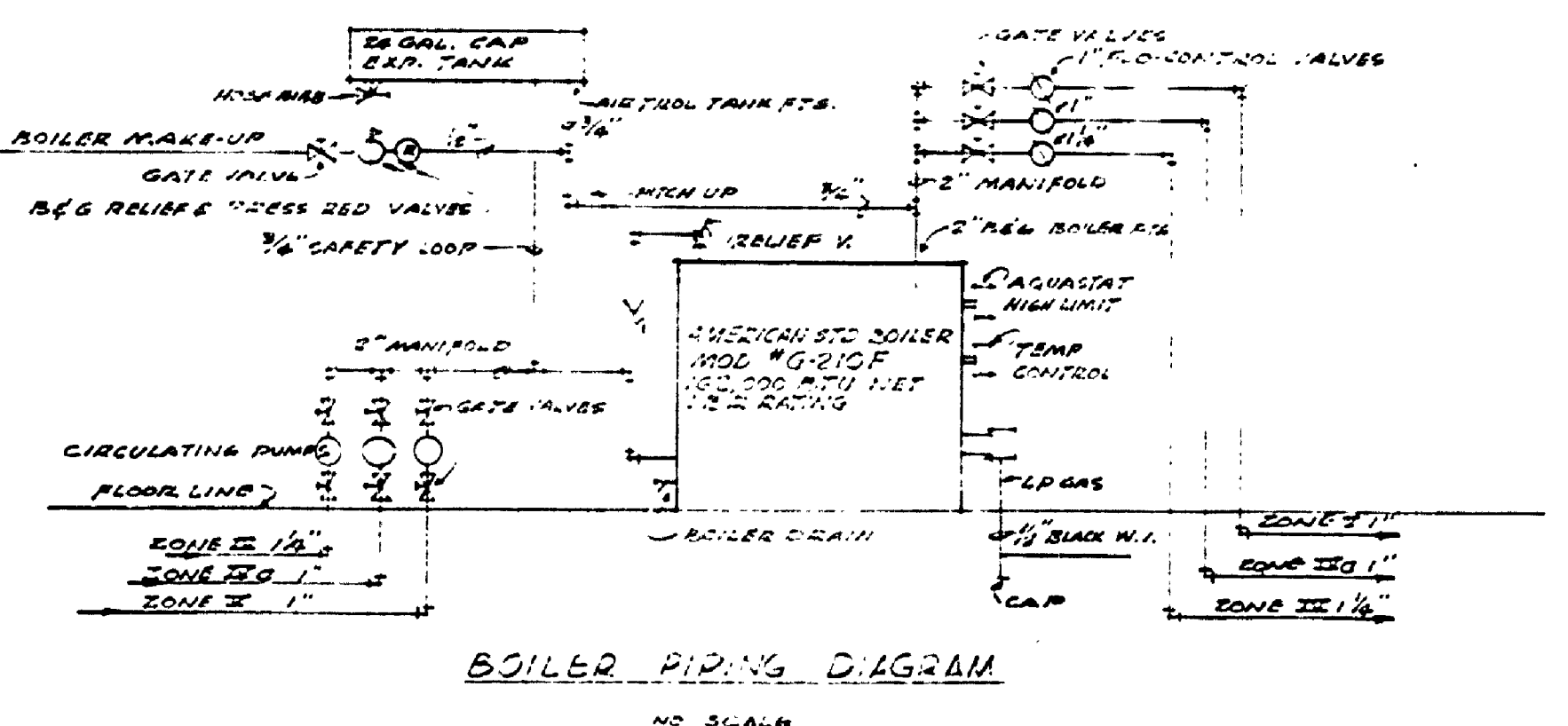


**BOILER SPECIFICATIONS**

AMERICAN STANDARD MOD 6 210F WITH NET I.B.R. RATING OF 100,000 BTU. BOILER SHALL HAVE STANDARD AND COMPLETE TWIN FOR HOT WATER (LOW WATER CUT-OFF, COMBINATION PRESSURE GAGE, 33MB SAFETY VALVE, LIMIT CONTROL) AND STANDARD CONTROLS FOR LIQUIFIED PETROLEUM GAS (GAS VALVE, GAS PRESSURE REGULATOR, MAIN SHUT OFF VALVE, PILOT LINE COCK, PILOT LINE GAS FILTER, SAFETY PILOT & AUXILIARY PILOT).

**HOT WATER CIRCULATING PUMPS**

- ZONE I - 2 1/2" 75" RATED FOR 11.5 GPM @ 6.6 FT. HEAD, 1/2 HP, 115/1160.
- ZONE II - 2 1/2" 75" RATED FOR 5.5 GPM @ 7.5 FT. HEAD, 1/2 HP, 115/1160.
- ZONE III - 2 1/2" 75" RATED FOR 3.2 GPM @ 7.5 FT. HEAD, 1/2 HP, 115/1160.
- ZONE IIIA - 2 1/2" 75" RATED FOR 3.5 GPM @ 7.5 FT. HEAD, 1/2 HP, 115/1160.
- ZONE IV - 2 1/2" 75" RATED FOR 7.5 GPM @ 7.2 FT. HEAD, 1/2 HP, 115/1160.
- ZONE IVA - 2 1/2" 75" RATED FOR 4.5 GPM @ 11.7 FT. HEAD, 1/2 HP, 115/1160.
- ZONE V - 2 1/2" 75" RATED FOR 5.5 GPM @ 11.7 FT. HEAD, 1/2 HP, 115/1160.



FIRST FLOOR PLAN  
SCALE 1/4" = 1'-0"