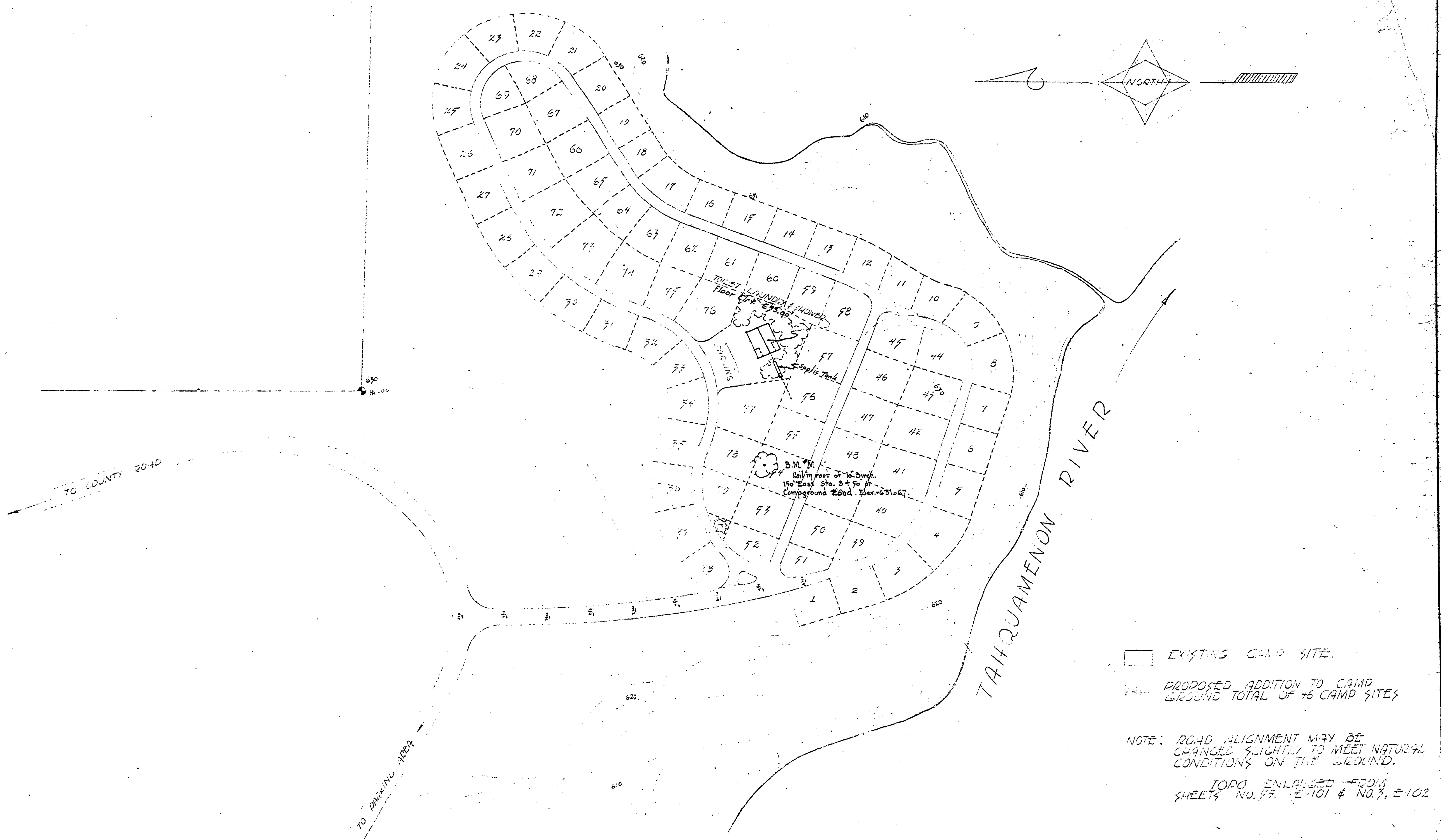


REVISIONS		REVIEWED BY SECTIONS		DATE		APPROVED BY		NO. DATE BY		DATE	
1		J.T.R.	ARCHITECTURAL	7-21-52				1			
2		H.C.M.	ENGINEERING	7-21-52				2			
3		J.T.R.	LANDSCAPE	7-21-52				3			
4											
5											
6											

DRAWN BY L.E.L.
 TRACED BY HAZLETT
 CHECKED BY
 DATE APRIL 1952

ASSISTANT CHIEF IN CHARGE
 DATE 7-29-52



EXISTING CAMP SITE.
 PROPOSED ADDITION TO CAMP GROUND TOTAL OF 75 CAMP SITES

NOTE: ROAD ALIGNMENT MAY BE CHANGED SLIGHTLY TO MEET NATURAL CONDITIONS ON THE GROUND.

TOPO ENLARGED FROM SHEETS NO. 77, E-101 & NO. 7, E-102