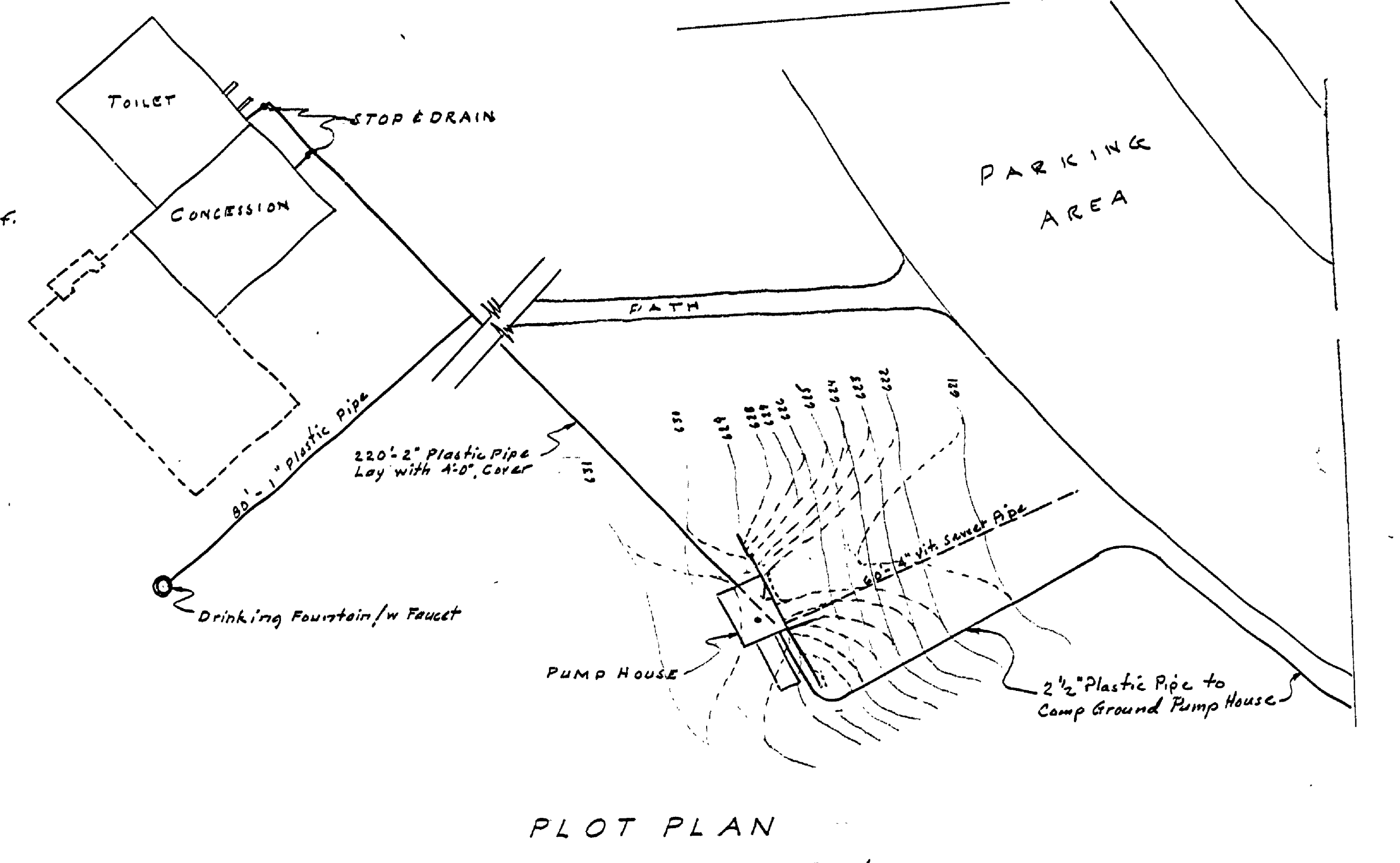
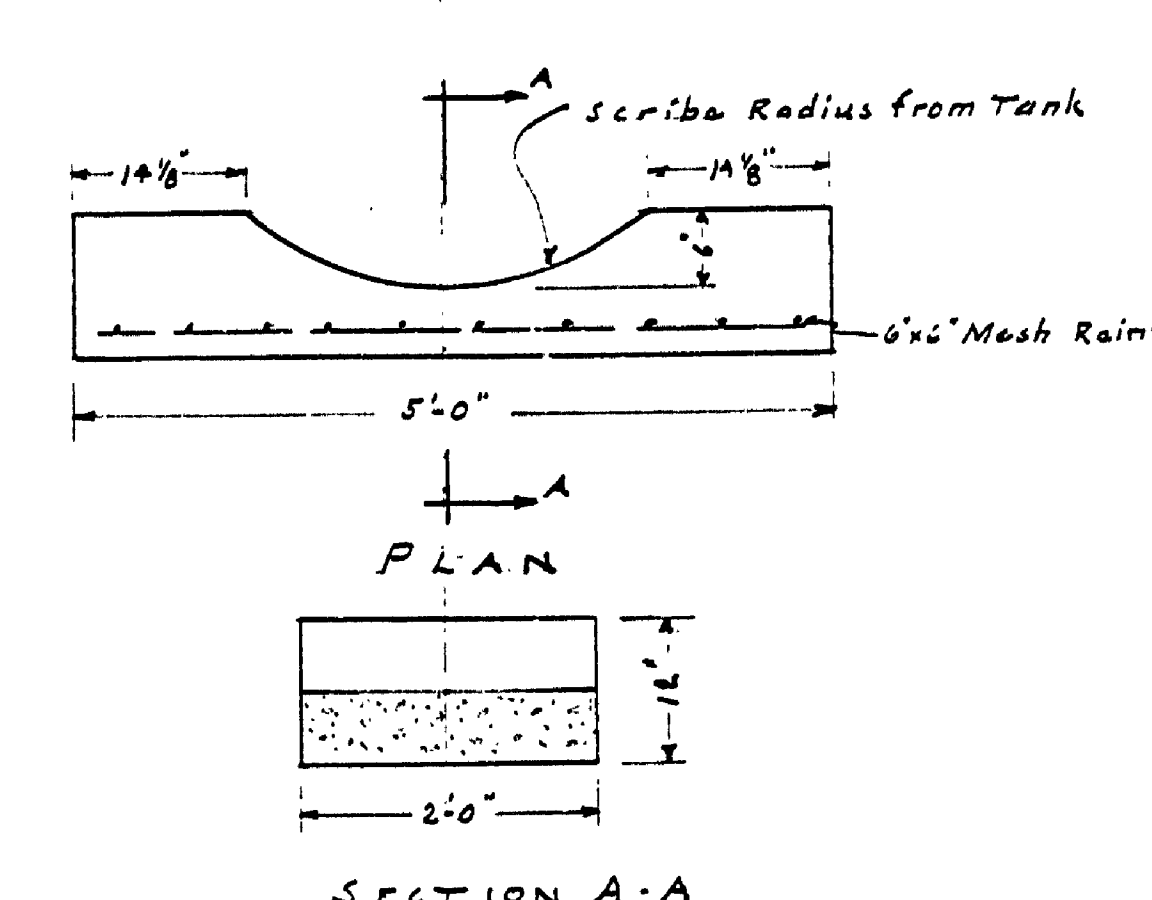
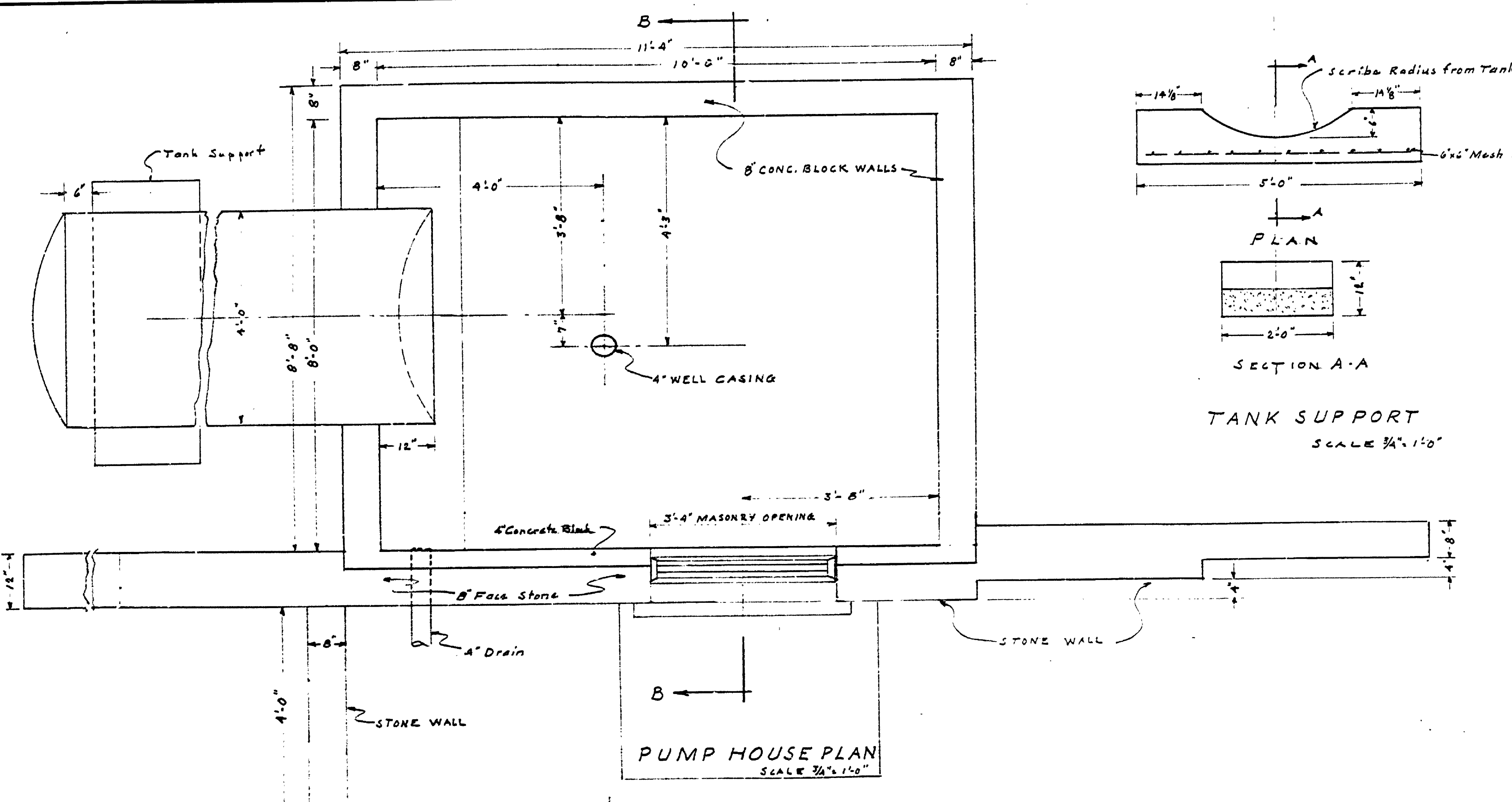


DRAWN BY E. J. P.	CHECKED BY 12-17-54	REVIEWED BY SECTIONS		APPROVED BY		REVISIONS		DATE BY	
		ARCHITECTURAL J.T.P. 12-19-54	ENGINEERING H.C.H. 12-23-54	LANDSCAPE J.T.P. 12-23-54	DATE 12-19-54	DATE 12-23-54	NO.	BY	NO.
						1		4	
						2		5	
						3		6	



Apply 1/2" Cement Mortar Plastic Coat to Outside Walls of Concrete Block Below Grade  
Apply 2 Coats of Asphalt Foundation Paint on Plastered Surfaces and surface of Roofs

