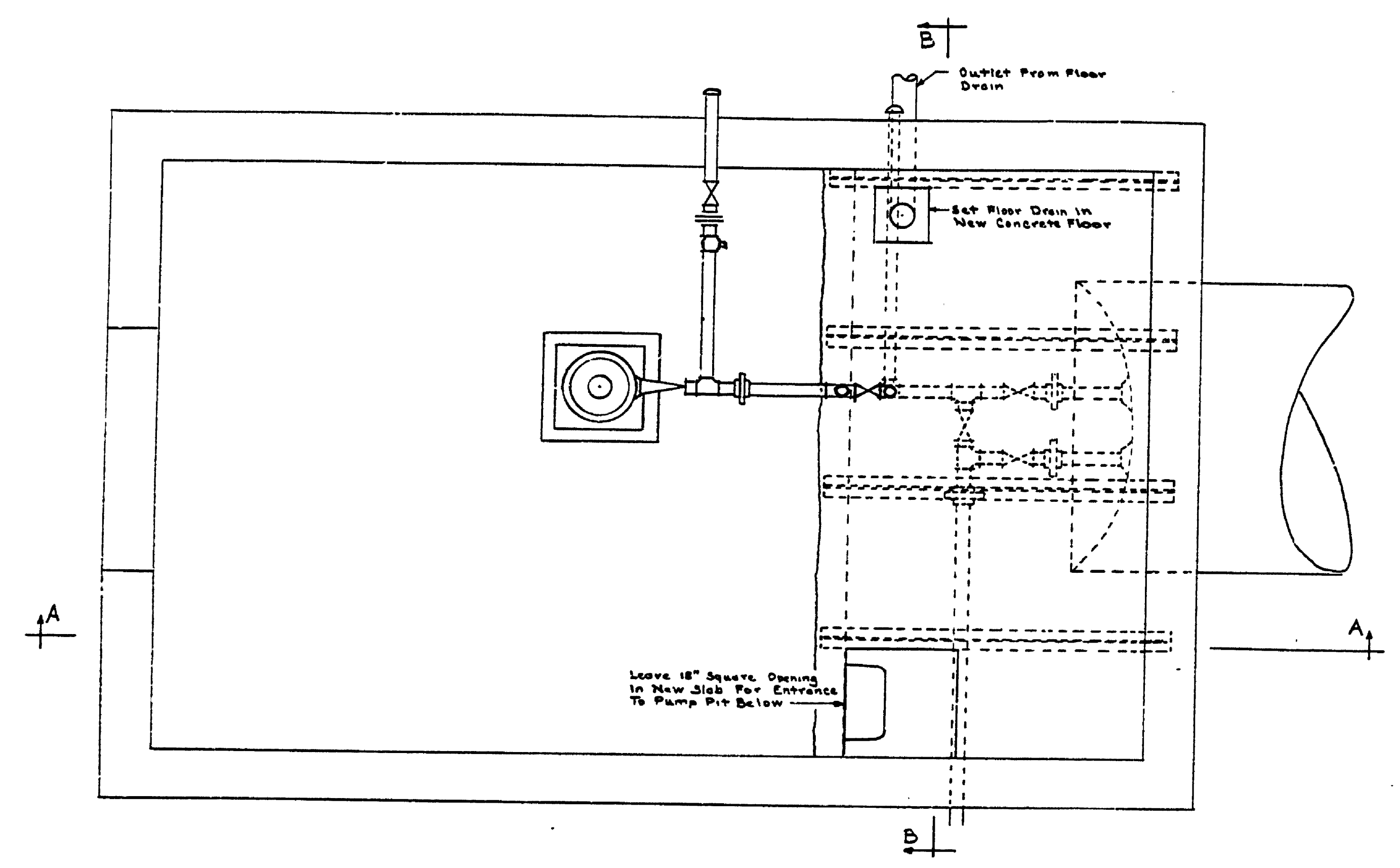
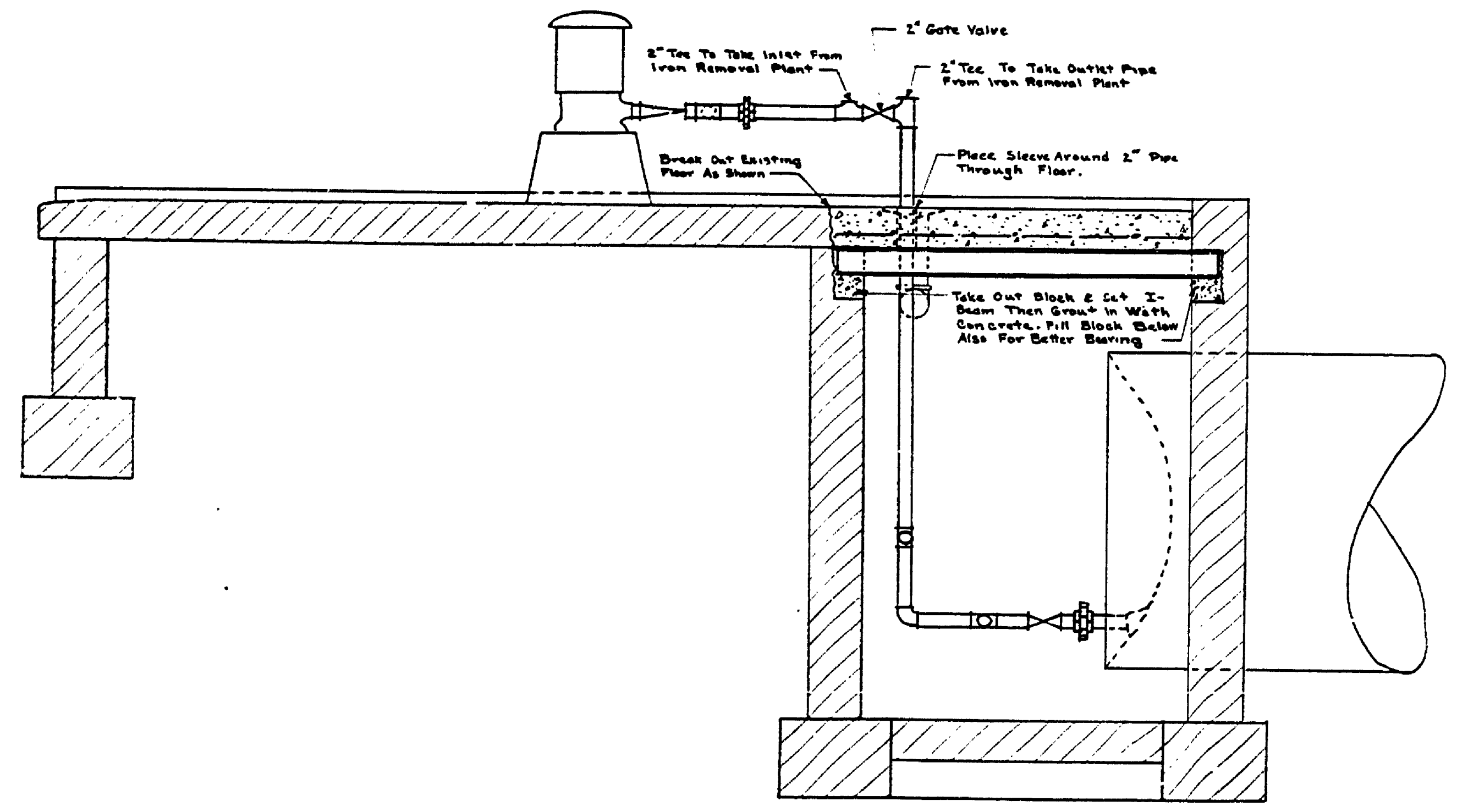


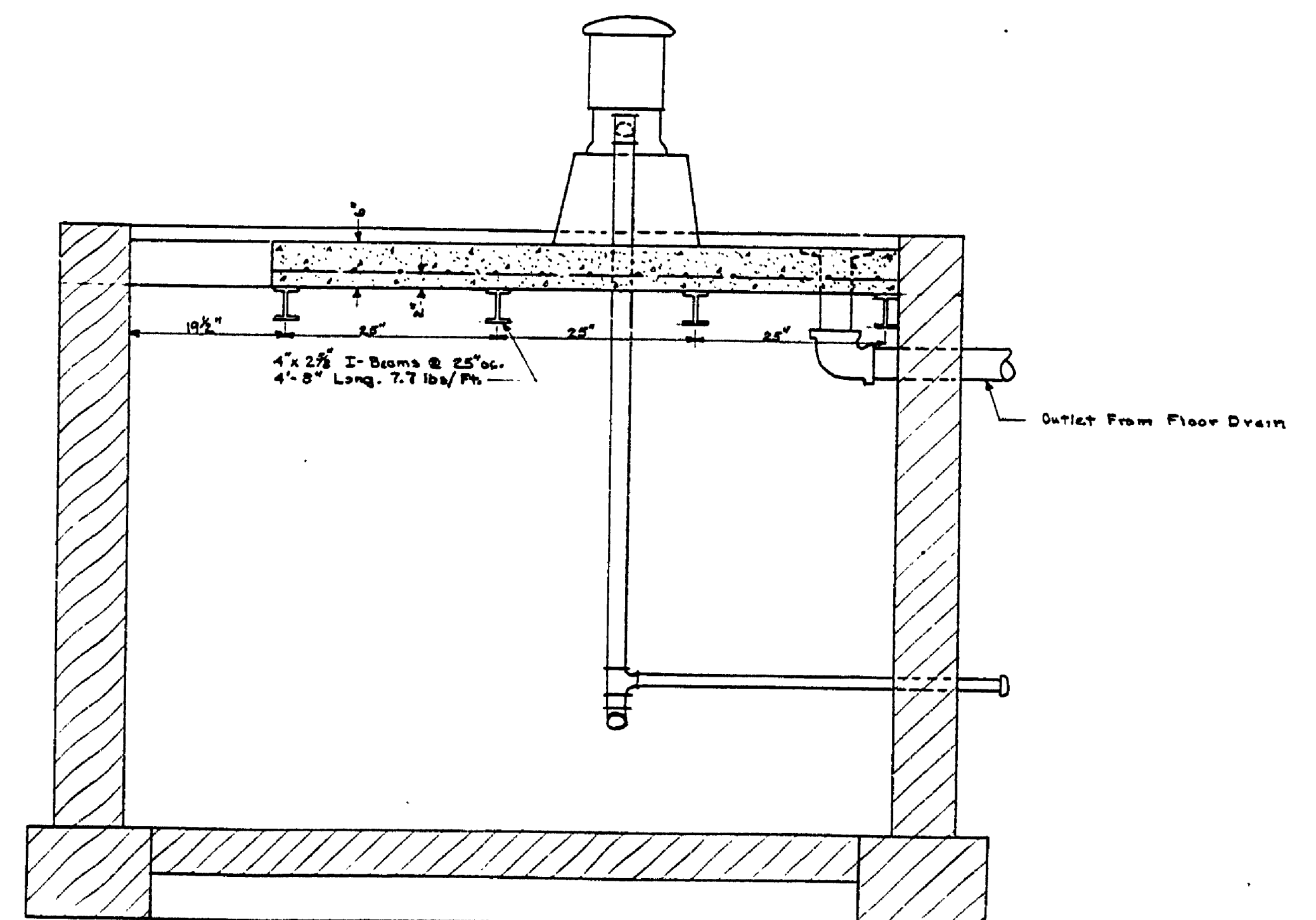
DESIGNED BY	DATE	REVIEWED	DATE	APPROVED	DATE	NO.	DATE	BY	REVISIONS	DATE	BY
B.H.S.	1-24-61	ARCHITECTURAL	1-24-61	<i>[Signature]</i>	1-24-61	1			4		
B.H.S.	1-24-61	ENGINEERING	1-24-61	<i>[Signature]</i>	1-24-61	2			5		
E.J.P.	1-27-61	LANDSCAPE	1-27-61	<i>[Signature]</i>	1-27-61	3			6		



PLAN



SECTION A-A



SECTION B-B

- Notes:
1. Revise Piping 2" Tees & 1-2" Gate Valve As Shown
 2. Break Old Floor Back About 6" The Total Length Of The Pump Pit.
 3. Break Out The Blocks Necessary To Set I-Beams As Shown
 4. Fill Blocks Below I-Beams With Concrete For Better Bearing
 5. Set I-Beams And Grout In With Concrete
 6. Do NOT Pour Floor Until Grout Around I-Beams Is Well Cured
 7. Be Sure Floor Drain is Set Before Pouring Floor

PUMPHOUSE REVISIONS FOR IRON REMOVAL PLANT

MICHIGAN
DEPARTMENT OF CONSERVATION
PARKS AND RECREATION DIVISION

TAHQUAMENON FALLS STATE PARK
LOWER FALLS CAMPGROUND WATER SYSTEM
Scale 3/4" = 1'-0"

SHEET
NO. 1
OF 1

PLAN NO.
E-110 A