

| DESIGNED BY | DATE | REVIEWED | DATE | APPROVED | DATE | NO. | DATE | BY | REVISIONS |
|-------------|------|---------------|------|----------|------|-----|------|----|-----------|
| WJP | 8/65 | ARCHITECTURAL | | | | 1 | | | 4 |
| RMB | 8/65 | ENGINEERING | | | | 2 | | | 5 |
| | | LANDSCAPE | | | | 3 | | | 6 |

CURVE DATA
 $\Delta = 43^{\circ}34'00''$
 $D = 12'$
 $T = 254.41'$
 $R = 636.62'$
 $L = 484.07'$
 $PC = 13+07.10$
 $PT = 17+91.17$

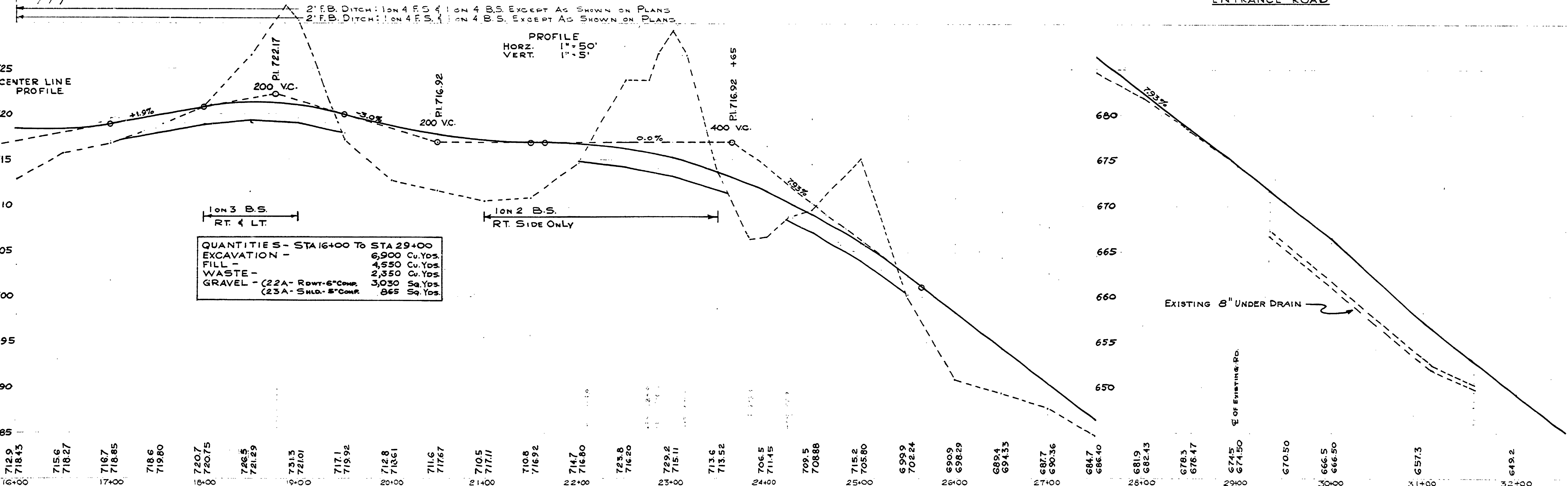
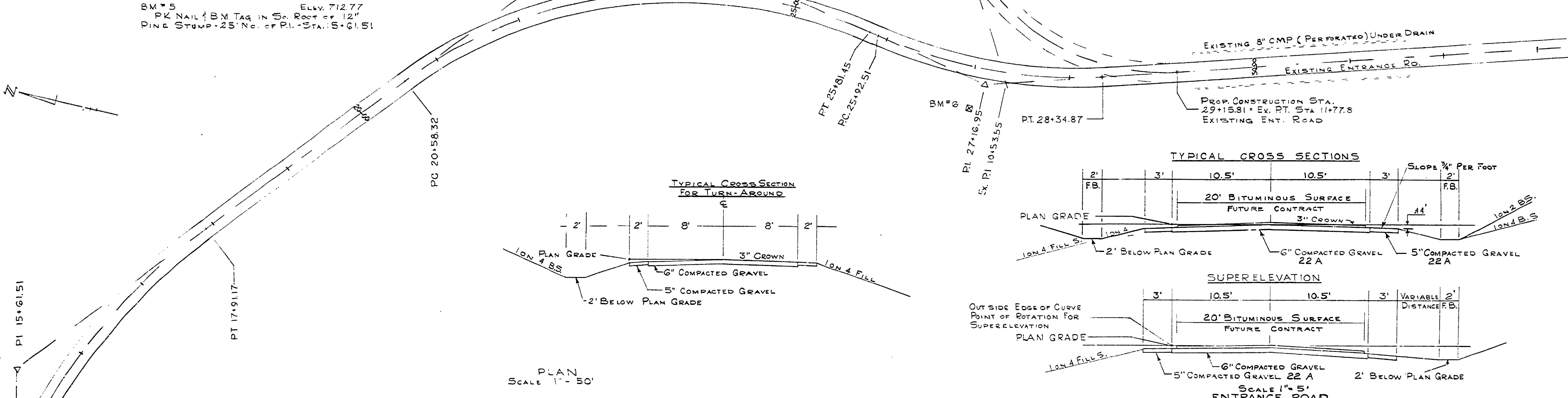
WITNESSES TO P.I. - STA 15+61.51
 3/4" PIPE
 NORTH - 27.25' - PK NAIL 1/2 BM TAG IN S. ROOT 12" PINE STUMP
 N 82° E - 64.72' - SPIKE IN 10" POPLAR
 N 65° W - 74.00' - SPIKE IN 12" SPRUCE
 WITNESSES TO P.I. - STA. 23+49.62
 3/4" PIPE
 N 85° E - 49.60' - SPIKE IN 3" MAPLE (CLUMP)
 S 45° E - 51.10' - SPIKE IN 4" POPLAR
 N 12° W - 58.85' - SPIKE IN 6" JACK PINE
 BM # 5
 PK NAIL 1/2 BM TAG IN S. ROOT OF 12" PINE STUMP - 25' No. of P.I. - STA. 15+61.51
 ELEV. 712.77

CURVE DATA
 $\Delta = 62^{\circ}46'30''$
 $D = 12'$
 $T = 291.30'$
 $R = 477.47'$
 $L = 523.13'$
 $PC = 20+58.32$
 $PT = 25+81.45$

EXISTING CURVE
 $\Delta = 77^{\circ}00'00''$
 $D = 25'$
 $T = 183.75'$
 $R = 231.0'$
 $L = 308.0'$
 $PC = 8+69.8$
 $PT = 11+77.8$

CURVE DATA
 $\Delta = 29^{\circ}05'00''$
 $D = 12'$
 $T = 124.44'$
 $R = 447.47'$
 $L = 242.36'$
 $PC = 25+92.51$
 $PT = 27+16.95$

WITNESSES TO P.I. - STA. 27+16.95
 3/4" PIPE
 N 70° W - 31.75' - N TREE IN 4 CROTCH BIRCH (BM # 6)
 S 43° W - 41.33' - SPIKE IN 8" POPLAR
 N 90° E - 106.60' - SPIKE IN W. PINE STUMP
 BM # 6
 HORIZ. SPIKE 1/2 TAG IN No. TREE OF 4 CROTCH BIRCH - 27' W. OF P.I. STA. 27+16.95
 ELEV. 688.97



QUANTITIES - STA 16+00 TO STA 29+00

| | |
|----------------------------------|----------------|
| EXCAVATION - | 6,900 C. YDS. |
| FILL - | 4,550 C. YDS. |
| WASTE - | 2,350 C. YDS. |
| GRAVEL - (22A - ROWT - 6" COMP.) | 3,030 Sq. YDS. |
| (23A - SHOUL. - 5" COMP.) | 865 Sq. YDS. |