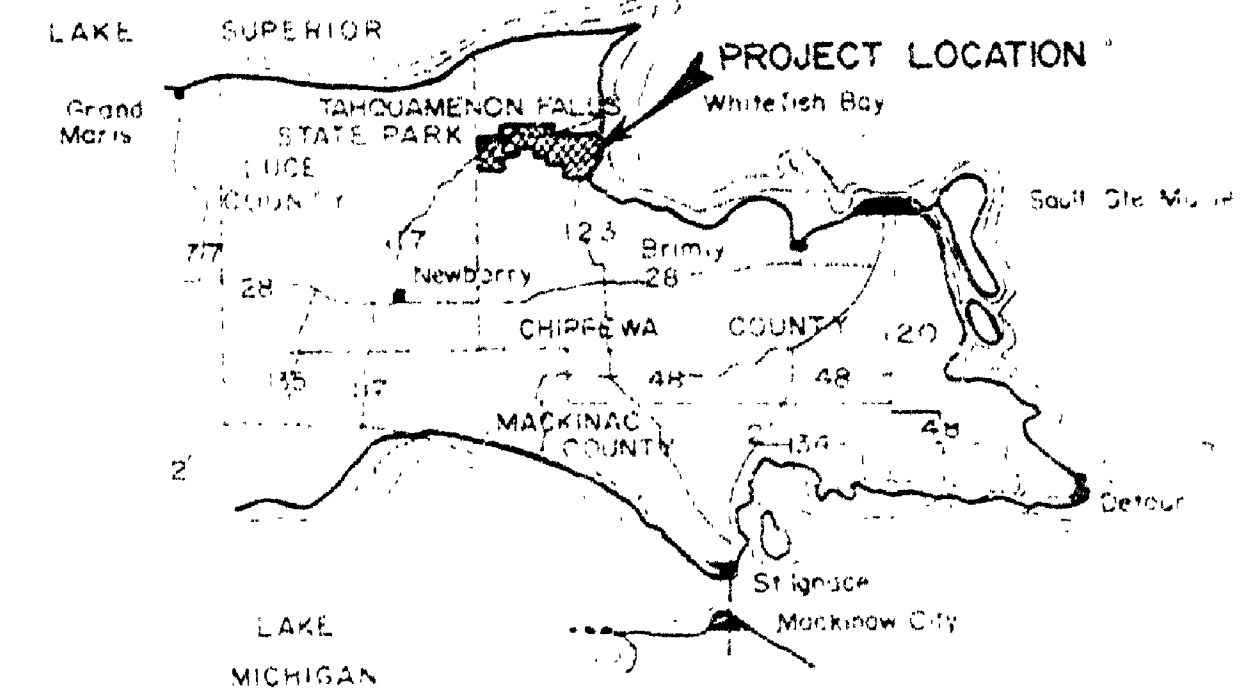


SCALE: 1"=50'

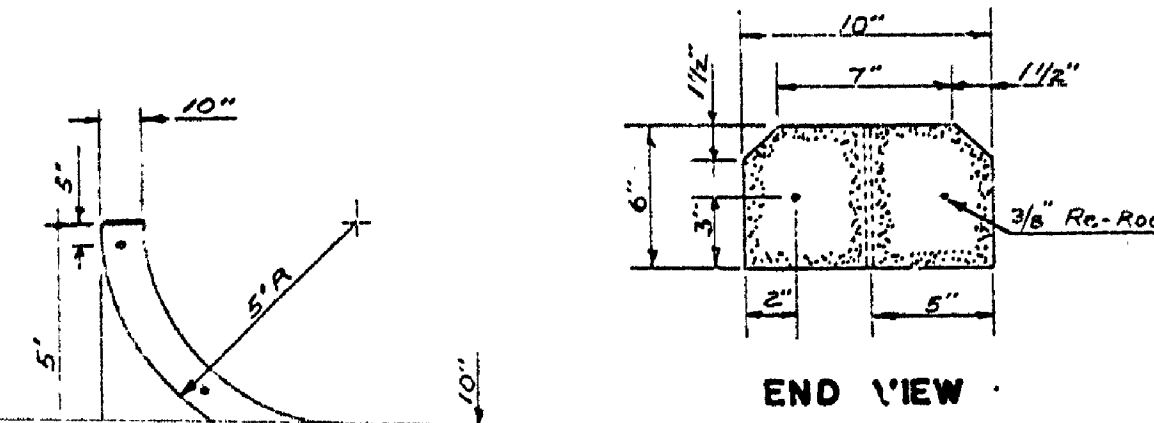
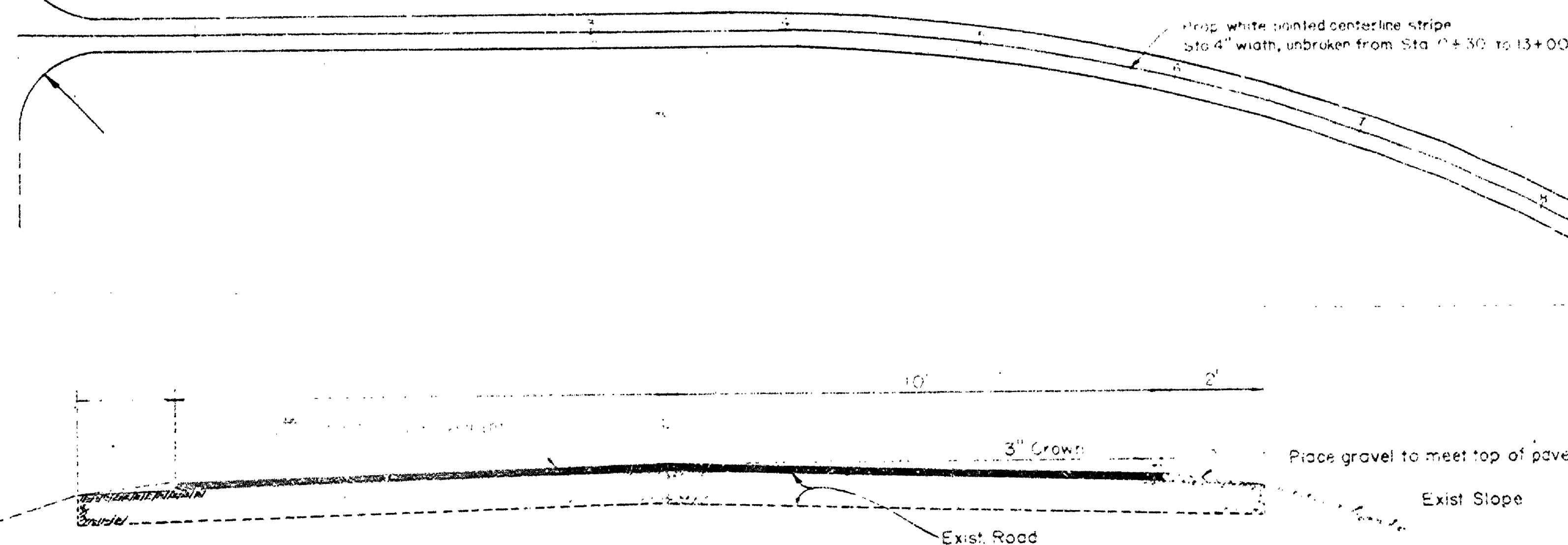
QUANTITIES

Curb removal & replacement	4150 LN.FT.
Bituminous Bond Coat, RC-70 or SS-1h	1400 GAL.
175#/SY. Bituminous Aggregate Pavement	11520 S.Y.
Paint striping	5000 LN.FT.
Radius Curbing, pre-cast	94 LN.FT.
Standard Straight Curbing, pre-cast	216 LN.FT.

The quantities for this project have been carefully estimated, but are not guaranteed and are not to be used as a basis for payment.



LOCATION MAP

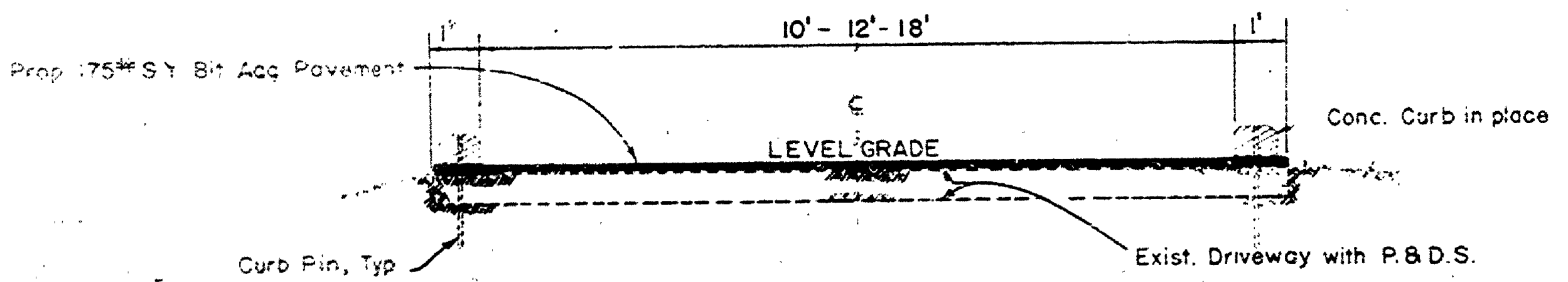
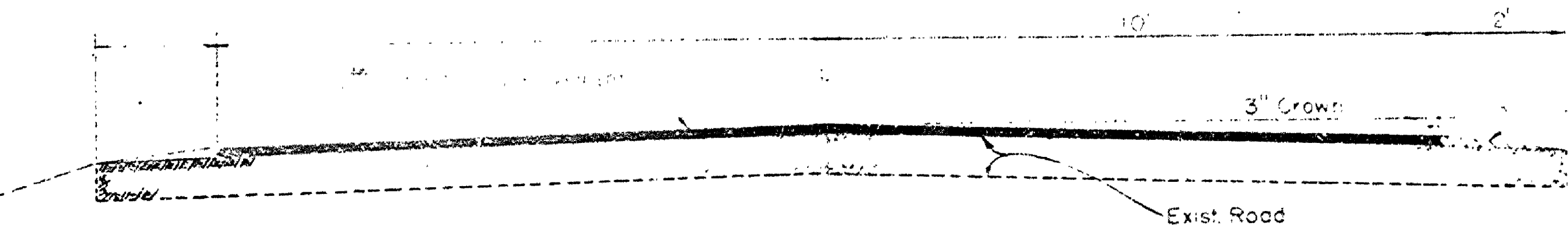


PRECAST CONCRETE CURB
5' CURVED CORNER

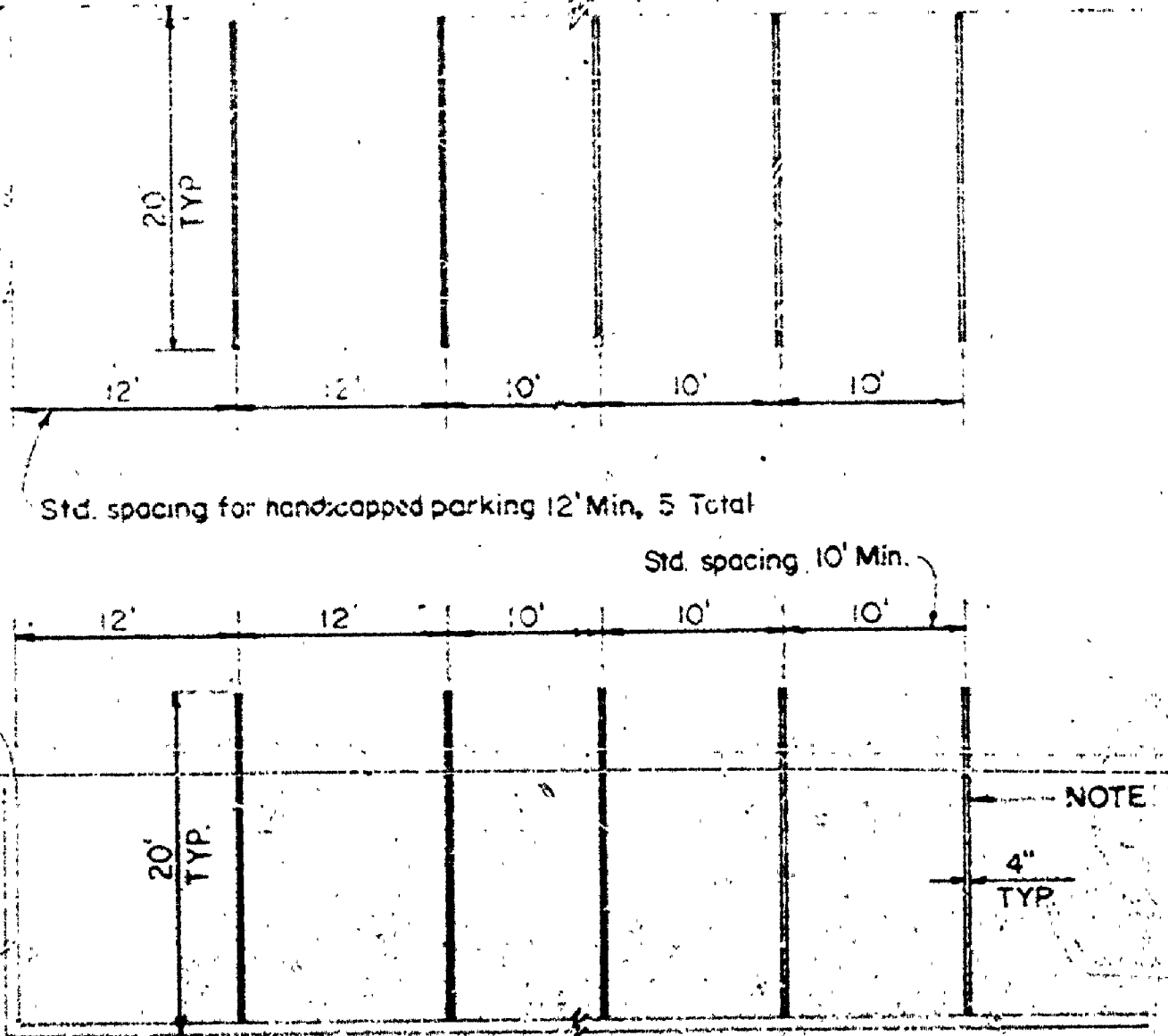
NOTE: All curbs to be removed prior to placing bituminous mat. Replace with pre-cast concrete curb.

SECTION B-B

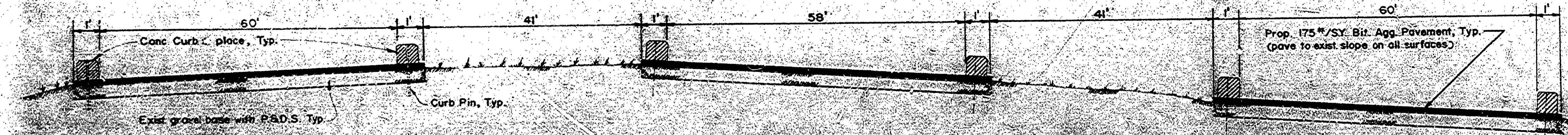
SCALE
Horz 1"=2'
Vert 1"=2'



TYPICAL SECTION OF DRIVEWAYS
NO SCALE



PAINTING DETAIL FOR PARKING STALLS



SECTION A-A

SCALE
Horz 1"=40'
Vert 1"=2'

EXIST. POURED DRAINAGE OPENINGS
Remove and replace with pre-cast concrete curb ends with 2' opening.
Remove portions of existing parking lot and entrance road as directed by the Engineer and replace with granular subbase and 6" inch agg. base course before placing bit. agg. pavement.

EXIST. POURED CORNER & RADIUS SECTIONS
Remove and replace with pre-cast concrete curb.

BUILDING COMMITTEE APPROVAL	
BY: _____	DATE: _____
RECOMMENDED FOR APPROVAL: _____	
RECOMMENDED FOR APPROVAL: _____	