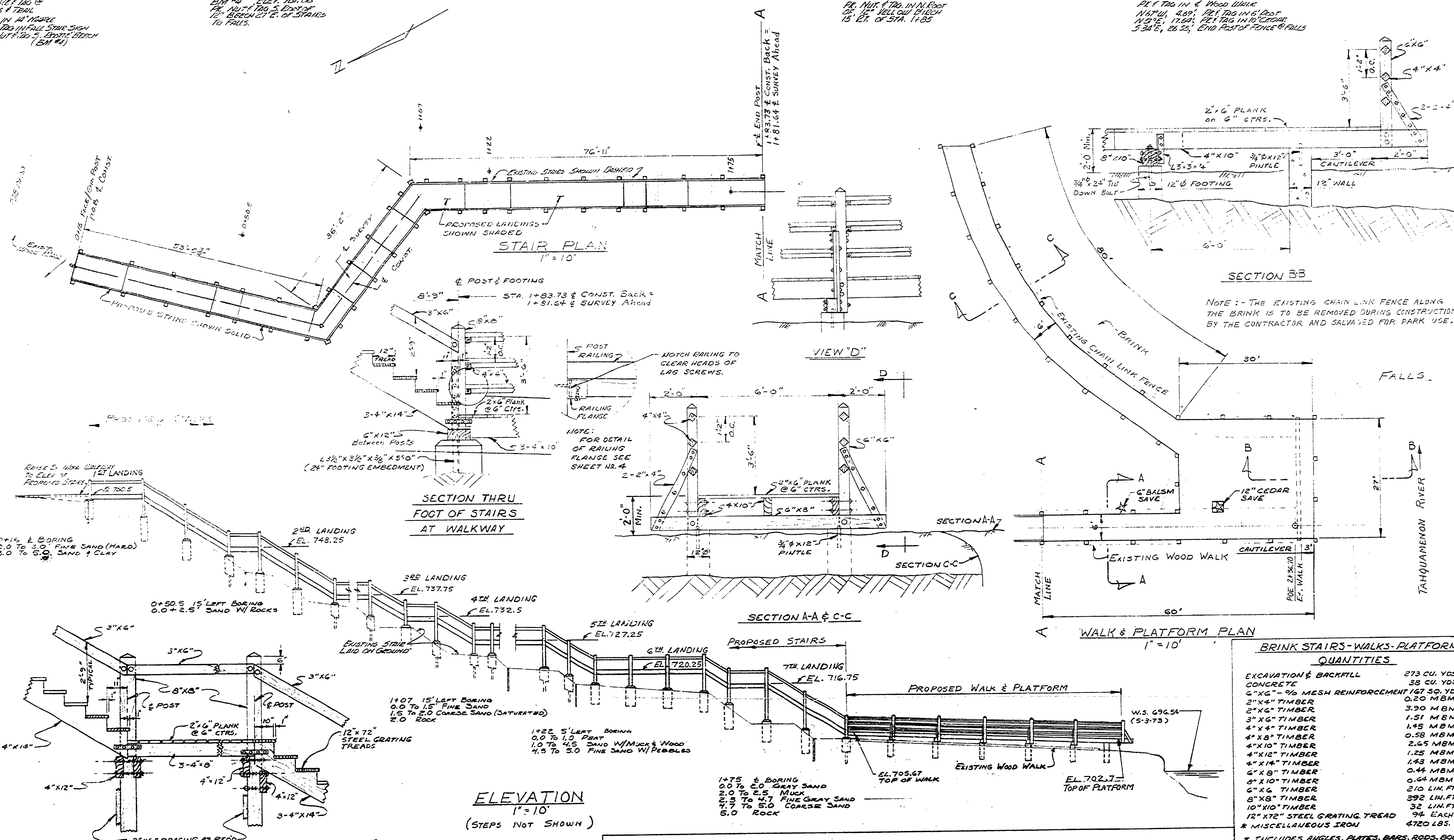


WITNESSES TO POB. 101.70 @
 INTERSECTION STAIRS & TREAD
 3.81' W. 6.53' SIDE IN W. WALK
 1.87' E. 0.25' FR. F. DO. IN FALL STAIR SIGN
 N 171° E. 24.40'. PL. NUT # 20.5. TROTT. BENCH
 (BM #4)

BM #4 ELEV. 761.86
 PL. NUT # 20.5. DO. OF
 12" BENCH 27' E. OF STAIRS
 TO FALLS.

BM #5 ELEV. 705.93
 PL. NUT # 20.5. IN N. FOOT
 25' W. 17.64' PL. TAG IN 10' CORNER
 15' E. OF STA. 1+85

WITNESSES TO POE STA. 1+36.70
 PL. TAG IN 4' WOOD WALK
 N 171° W. 4.89'. PL. TAG IN 6' POST
 N 101° E. 17.64'. PL. TAG IN 10' CORNER
 3.34' E. 26.25'. END POST OF FENCE @ FALLS



BRINK STAIRS-WALKS-PLATFORM QUANTITIES

EXCAVATION & BACKFILL	273 CU. YDS.
CONCRETE	38 CU. YDS.
6" X 6" - 1/2 MESH REINFORCEMENT	167 SQ. YDS.
2" X 4" TIMBER	0.20 MBM
2" X 6" TIMBER	3.30 MBM
3" X 6" TIMBER	1.51 MBM
4" X 4" TIMBER	1.45 MBM
4" X 8" TIMBER	0.58 MBM
4" X 10" TIMBER	2.65 MBM
4" X 12" TIMBER	1.25 MBM
4" X 14" TIMBER	1.43 MBM
6" X 8" TIMBER	0.44 MBM
6" X 10" TIMBER	0.54 MBM
6" X 12" TIMBER	2.10 LIN. FT.
8" X 8" TIMBER	392 LIN. FT.
10" X 10" TIMBER	32 LIN. FT.
12" X 12" STEEL GRATING TREAD	94 EACH
* MISCELLANEOUS IRON	4720 LBS.

* INCLUDES ANGLES, PLATES, BARS, RODS, BOLTS, NUTS, WASHERS, LAG SCREWS AND SPIKES.

DESIGN LOADING:
 100 LBS. PER SQ. FT. FOR LIVE LOAD
 10 LBS. PER SQ. FT. FOR DEAD LOAD

DESIGN STRESSES:
 POSTS - 1200 # F. POSTS AND TIMBER CLASS
 BEAMS - 1600 # F. BEAMS AND STRINGERS CLASS
 STRINGERS - 1200 # F. JOIST AND PLANKLESS
 PLANK - 1200 # F. JOIST AND PLANKLESS
 RAILING - 1600 # F. J AND P CLASS

TREATED TIMBERS:
 ALL LUMBER SHALL BE PRESURE TREATED WITH A PRESERVATIVE WHICH CONFORMS TO THE PROJECT SPECIFICATIONS AND SHALL NOT PRODUCE OBJECTIONABLE RESIDUE ON THE RAILINGS. ALL STAIR STRINGERS TO BE TREATED AFTER FABRICATION.

MISCELLANEOUS IRON:
 ALL HARDWARE INCLUDING CONNECTION BOLTS, NUTS AND PLANKING SPIKES SHALL BE GALVANNEED. WASHERS, CAST OR MALLEABLE IRON. ALL CONNECTION BOLTS TO BE 3/4" DIAMETER WITH NUTS AND WASHERS AS REQUIRED. EXCEPT 3/8" DIAMETER BOLTS, NUTS AND WASHERS FOR STAIR TREAD ATTACHMENT AND 1/2" DIAMETER X 3" LAG SCREWS FOR RAILING FLANGE ATTACHMENT.

HOLES FOR BOLTS SHALL BE 1/8" LARGER THAN DIAMETER OF BOLTS, 1/16" SMALLER THAN DIAMETER FOR LAG SCREWS.

ABOVE SECTION FOR 2ND LANDING ELEV. 748.25
 4TH LANDING ELEV. 732.5
 6TH LANDING ELEV. 720.25
 7TH LANDING ELEV. 716.75

NOTE: SEE SHEET #5 FOR ADDITIONAL FRAMING DETAILS

SURVEYED BY	D. BISSILL	5-73	DRAWN BY	LEMMON/KUNISH	1-74	NO.	DATE	BY	REVISIONS	NO.	DATE	BY	REVISIONS
DESIGNED BY	EVANS/LEAK	11-73	CHECKED BY			1.				2.			
						3.				4.			

MICHIGAN DEPARTMENT OF NATURAL RESOURCES	TAHUQUAMONN FALLS STATE PARK AREA OR PARK	PROJECT NO.	24-1084
BRINK STAIRS-WALKS-PLATFORM	STAIRWAYS	SHEET	2 OF 6
		PLAN NO.	E-123