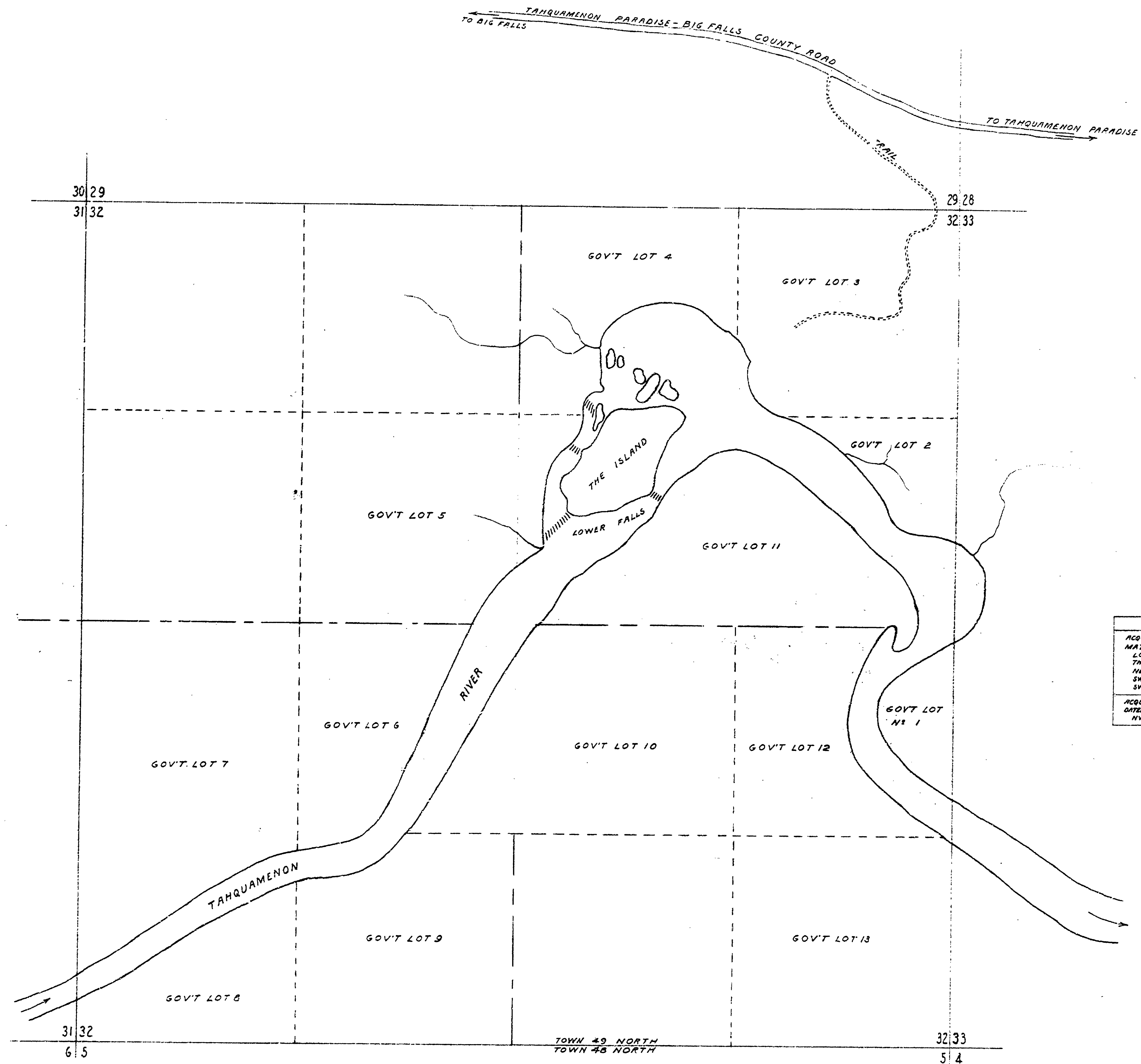


DATE	REVISIONS
	4
	5
	6
NO. DATE BY	
1	
2	
3	
APPROVED BY	DATE
<i>[Signature]</i>	
ASSISTANT CHIEF IN CHARGE	DATE
<i>[Signature]</i>	7-7-58
OF DESIGN	
REVIEWED BY SECTIONS	
ARCHITECTURAL	
ENGINEERING	
LANDSCAPE	
DRAWN BY	DATE
W.K. J. 11/5/58	
CHECKED BY	DATE
C.F. 7/7/58	



ACQUISITION DATA
 ACQUIRED FROM US GOVERNMENT BY QUITCLAIM DEED DATED MAY 15, 1942, RECORDED JULY 23 1942 IN LIBER 158, PAGES 496 & 497
 LOTS 1 TO 13 INCLUSIVE
 THE ISLAND
 NW 1/4 OF NW 1/4
 SW 1/4 OF NW 1/4
 SW 1/4 OF SE 1/4
 ACQUIRED FROM NEWBERRY LUMBER AND CHEMICAL CO. BY WARRANTY DEED DATED MAR. 10, 1941, RECORDED APR. 15 1941 IN LIBER 35, PAGE 316
 NW 1/4 OF NW 1/4