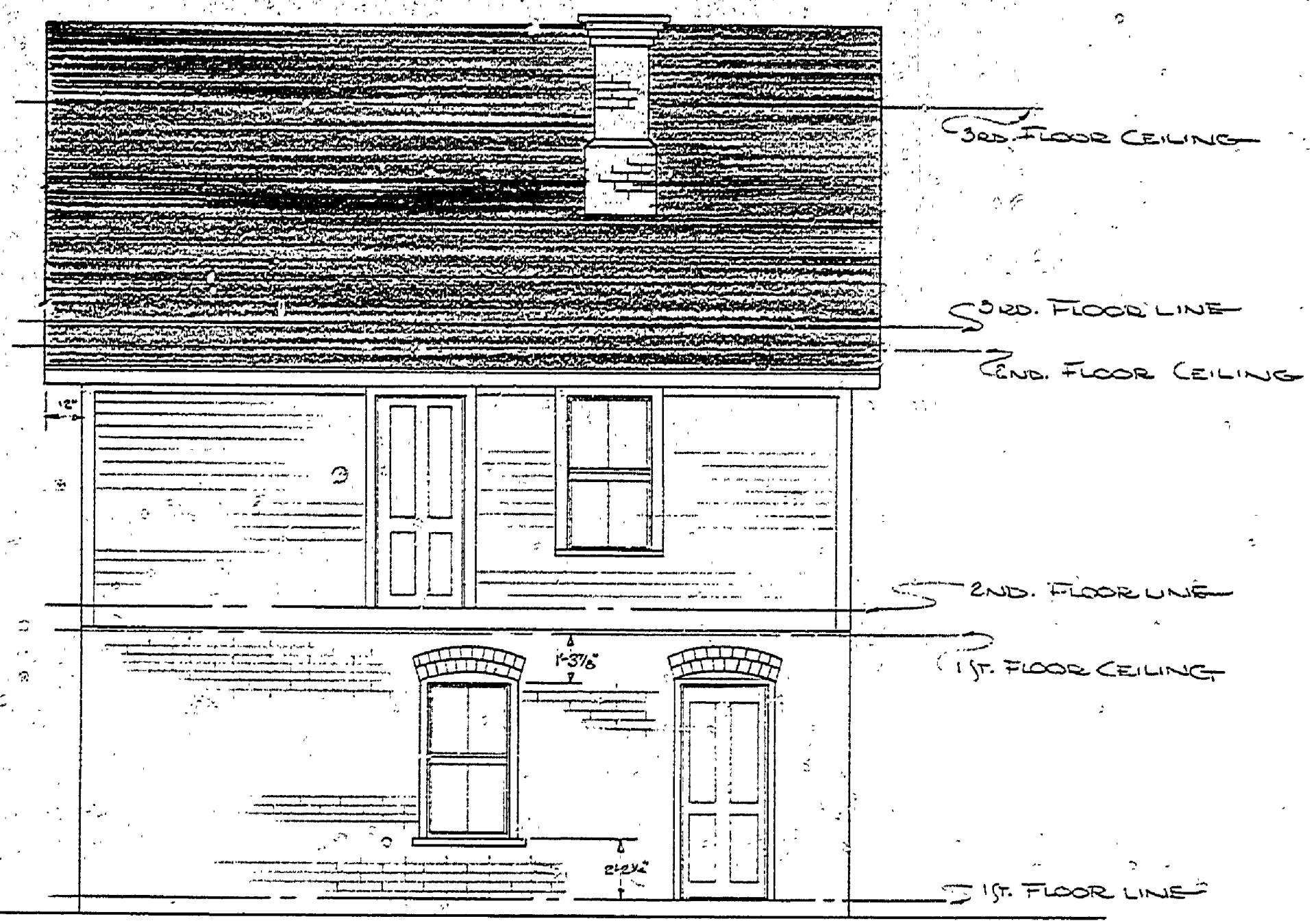


DESIGNED BY	DATE	REVIEWED	DATE	APPROVED	DATE	NO.	DATE	BY	REVISIONS	DATE	BY
DRIVEN BY	7/6/02	ARCHITECTURAL				1			4		
CHECKED BY	7/6/02	ENGINEERING				2			5		
		LANDSCAPE				3			6		



EAST ELEVATION



NORTH ELEVATION



WEST ELEVATION



SOUTH ELEVATION

SCALE 1/8"=1'-0"

- NOTE:
1. ROOFING MOSTLY MISSING.
  2. STEPS TO PORCH IN DANGEROUS CONDITION.
  3. FOOTING DEPTH UNDETERMINED.

BUILDING #2

MICHIGAN  
DEPARTMENT OF CONSERVATION  
PARKS AND RECREATION DIVISION

MEASURED DRAWING  
FAYETTE HISTORICAL TOWNSITE  
FAYETTE STATE PARK

SHEET  
NO. 2  
OF 3

PLAN NO.  
A-2