

DESIGNED BY	DRAWN BY	CHECKED BY	DATE	REVIEWED	DATE	APPROVED	DATE	NO.	DATE	BY	REVISIONS
								1			4
								2			5
								3			6

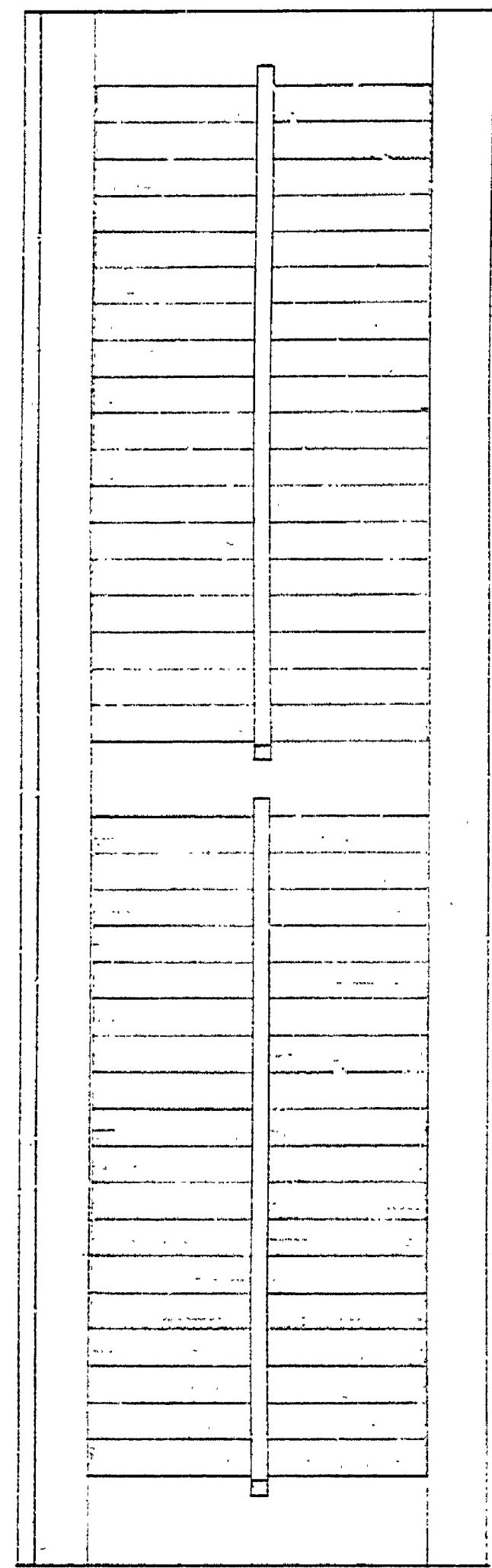


FIG. 1
NO SCALE

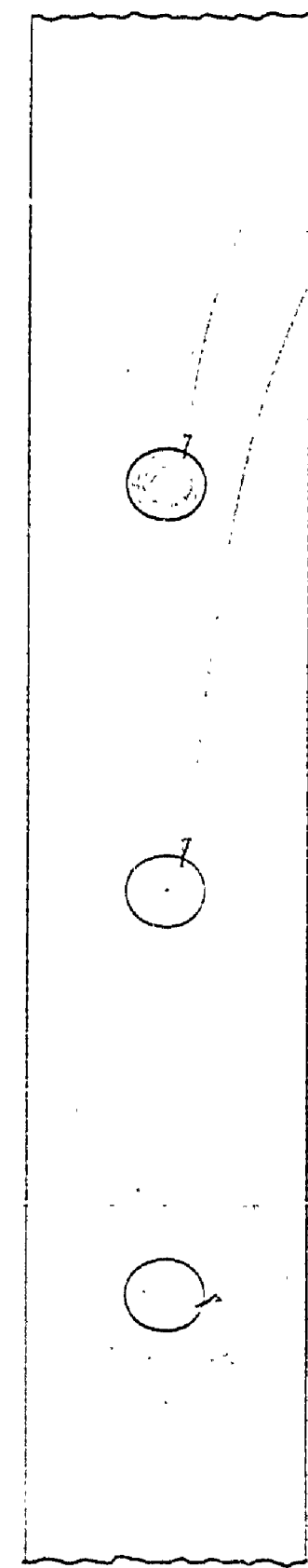


FIG. 2
NO SCALE

FASTENERS OR SOCKETS BORED INTO SLATS

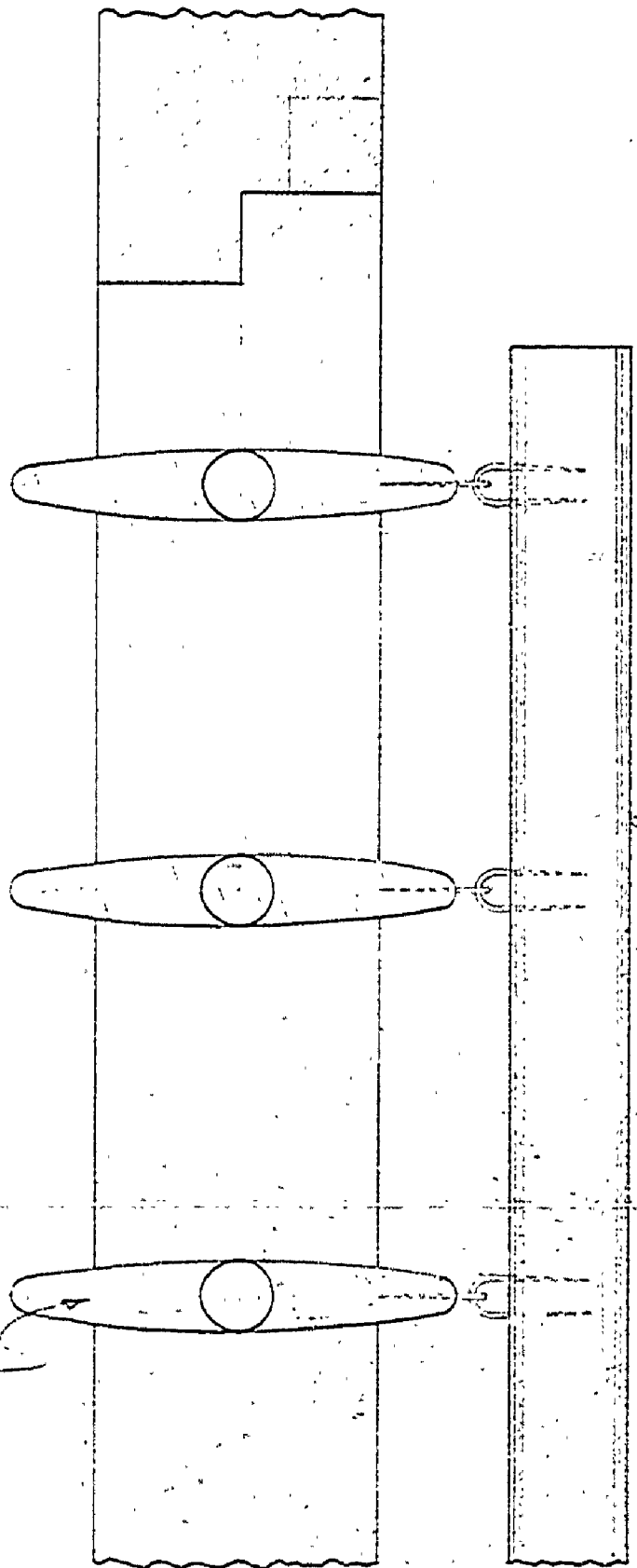


FIG. 3
NO SCALE

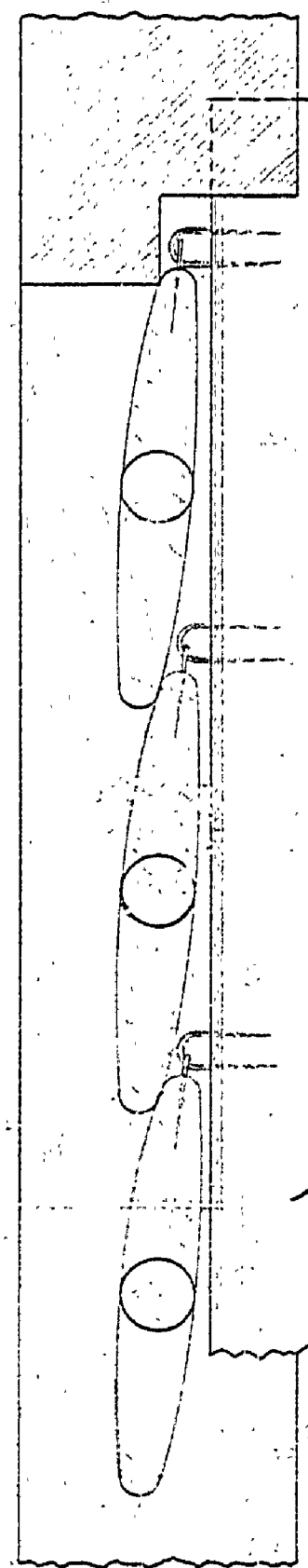


FIG. 4
NO SCALE

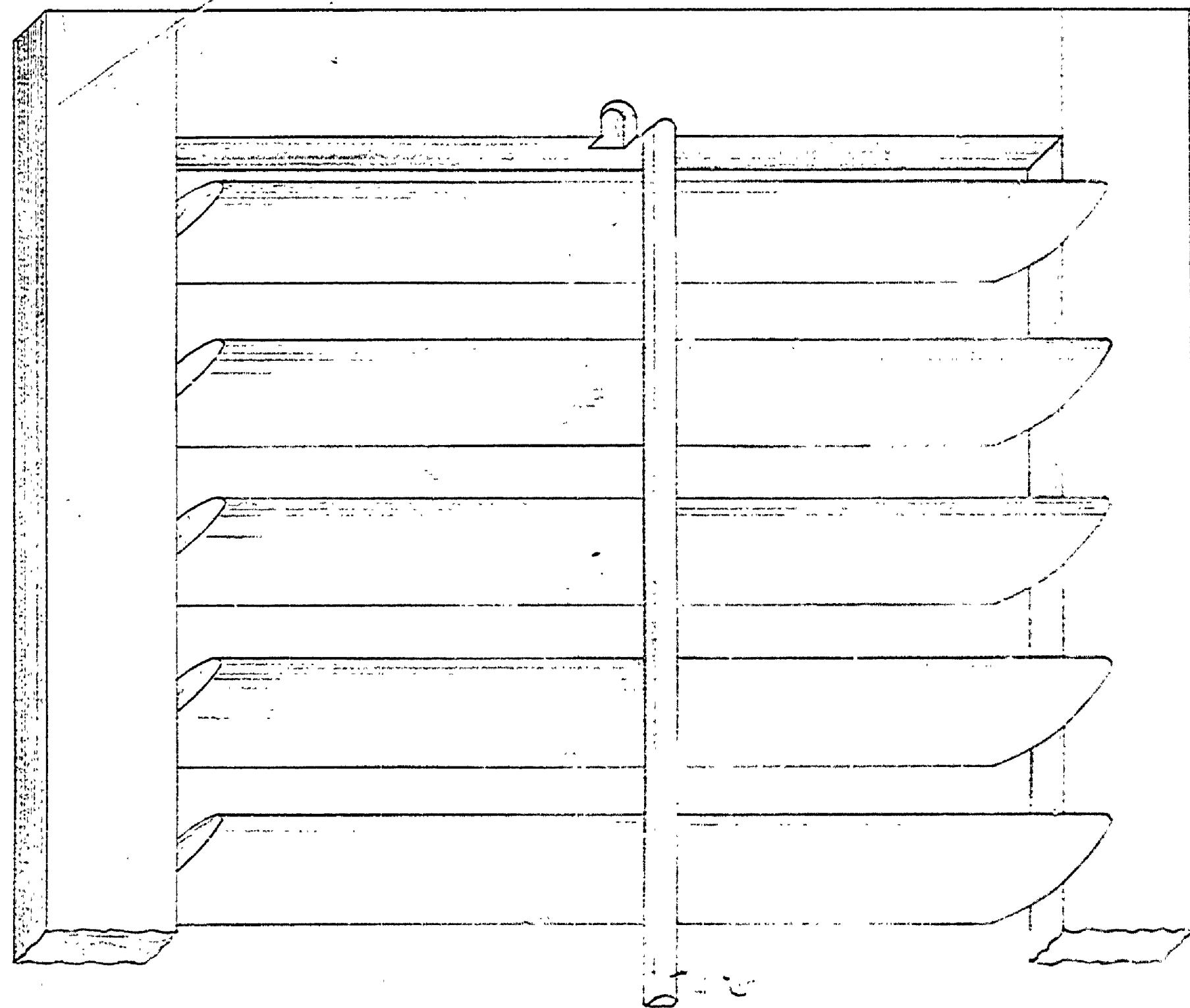


FIG. 6
NO SCALE

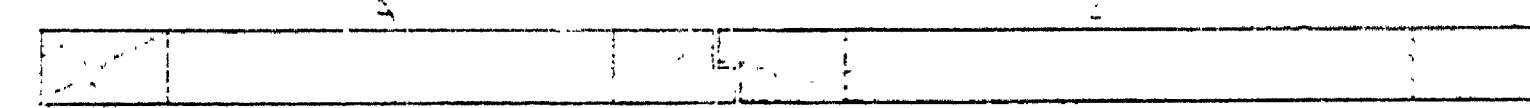


FIG. 8
NO SCALE

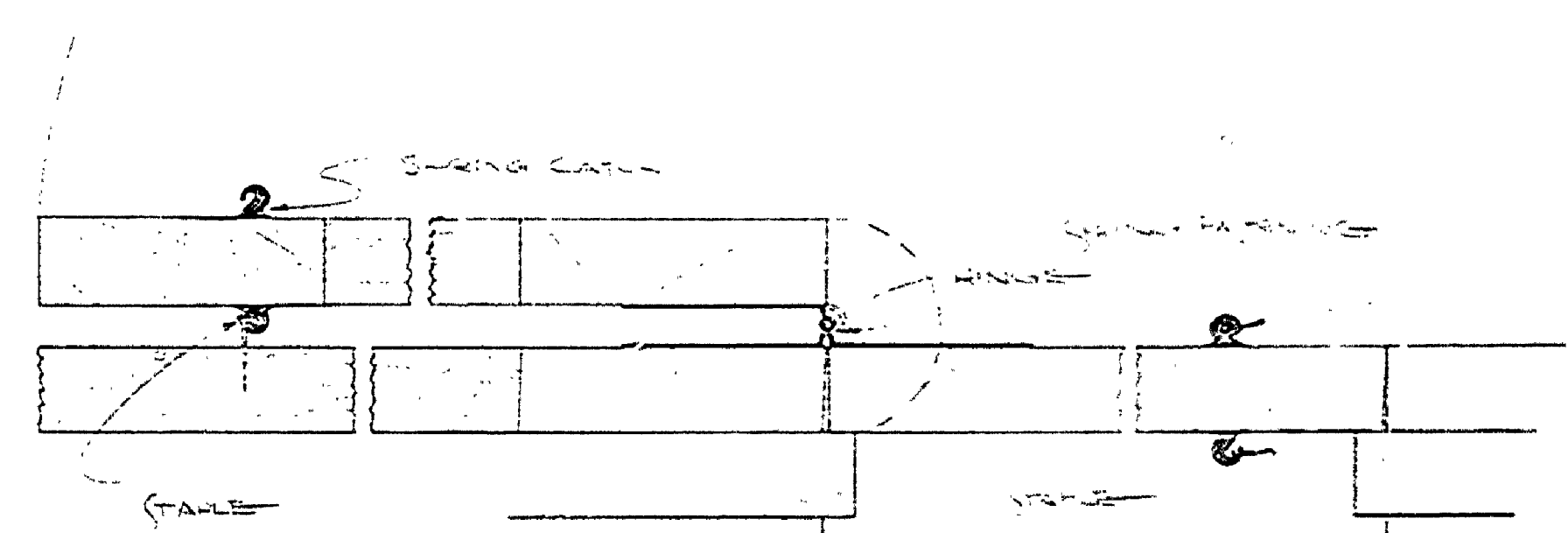


FIG. 7
NO SCALE

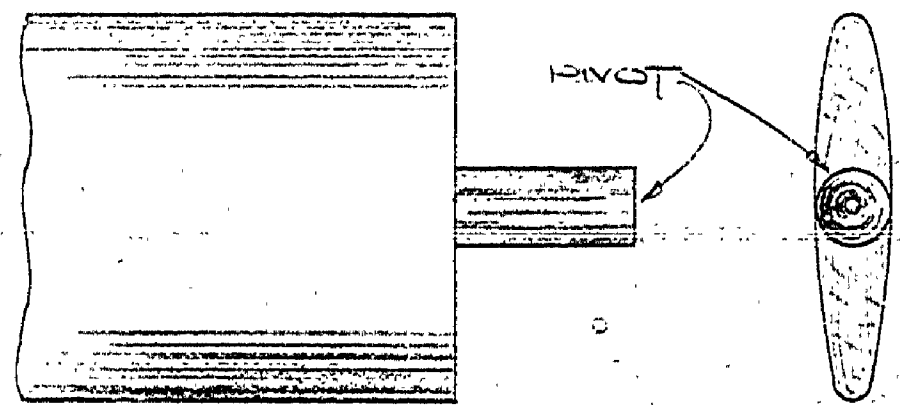


FIG. 5
NO SCALE

FIG. 9

SLAT (LITTER BLIND)

THE SLAT IS TO BE USED OWING TO THE VENTILATION AND LIGHT RECEIVED BY THE ADJUSTABLE SLATS. THE CONSTRUCTION AND ARRANGEMENT OF THESE SLATS IS SHOWN IN FIGS. 2, 3, 4, 5, 6, 7, 8, 9, 10, 11, 12, 13, 14, 15, 16, 17, 18, 19, 20, 21, 22, 23, 24, 25, 26, 27, 28, 29, 30, 31, 32, 33, 34, 35, 36, 37, 38, 39, 40, 41, 42, 43, 44, 45, 46, 47, 48, 49, 50, 51, 52, 53, 54, 55, 56, 57, 58, 59, 60, 61, 62, 63, 64, 65, 66, 67, 68, 69, 70, 71, 72, 73, 74, 75, 76, 77, 78, 79, 80, 81, 82, 83, 84, 85, 86, 87, 88, 89, 90, 91, 92, 93, 94, 95, 96, 97, 98, 99, 100.

1. BLIND AND SLATS OTHERWISE BY SIDE OF THE BLIND, THE SAME AS SHOWN. THEY ARE EQUALLY SPACED ON GRAVITY LINES, WHICH ARE SO MADE THAT WHEN THE BLIND IS OPEN MEET THE CENTER OF EITHER DIRECTION IT WILL GIVE THE USE OF THE WAY ITSELF. UPON WINDOW FRAMES WHICH HAVE BLIND STOPS THE BLINDS ARE HUNG BETWEEN THE OUTSIDE CASINGS, BUT IF THE FRAME HAS NOTHING BUT THE CASING OUTSIDE OF THE PULLEY STILE, THE BLINDS ARE HUNG WITH SPECIAL HANGERS. WHERE A WINDOW HAS A PAIR OF BLINDS THE ENDS ARE LAP JOINTED AS SHOWN IN FIG. 7, SO THAT THE BLINDS ARE CLOSED BY BLINDS. FIG. 7 SHOWS THE BLINDS AND FRAME ASSEMBLY WHICH ENGAGES WITH A STAKE IN EITHER CLOSED OR OPEN POSITION, THIS SECURING BLINDS IN EITHER OF THESE POSITIONS.

2. METHOD OF PIVOTING SLATS

3. POSITION OF SLAT BLIND SHOWING SLATS ASSEMBLED

4. SLATS SHOWING LAP JOINT AT CENTER

5. SLATS SHOWING HINGE AND SPRING MECHANISM FOR LOCKING BLIND IN OPEN OR CLOSED POSITION.

6. TOP OF SLAT

MICHIGAN
DEPARTMENT OF CONSERVATION
PARKS AND RECREATION DIVISION

CONCEPTUAL DRAWING
FAYETTE HISTORICAL TOWNSHIP
FAYETTE CITY PARK

SHEET NO. 4
OF 4
PLAN NO.