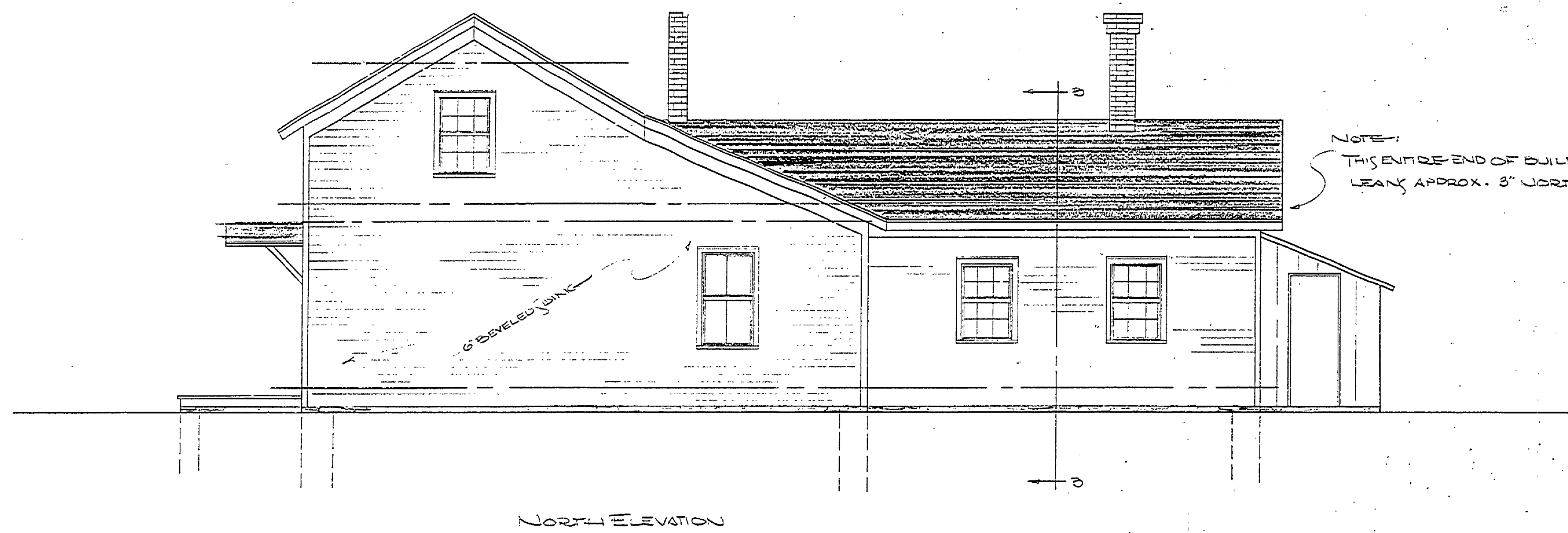
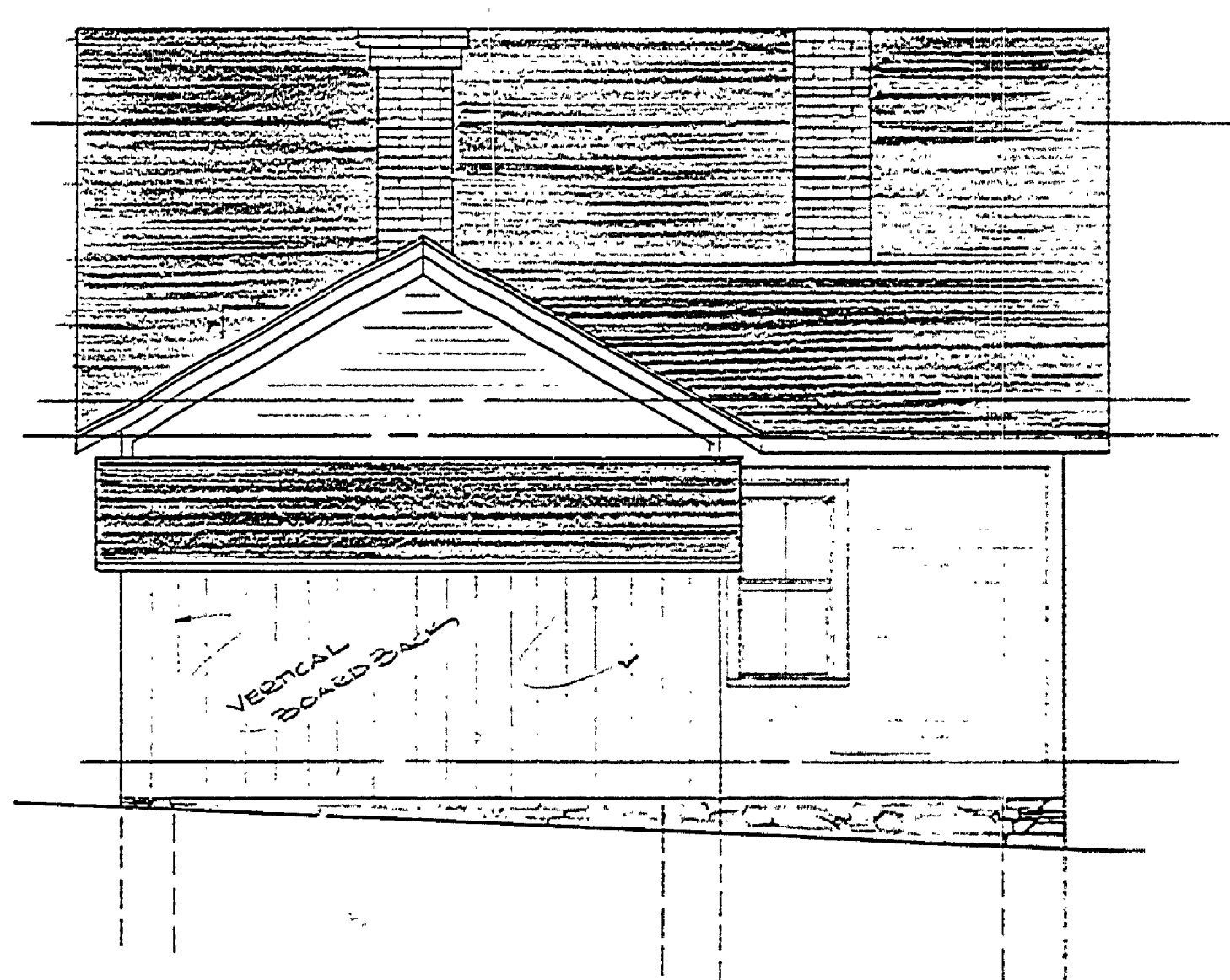


| DESIGNED BY | DRAWN BY | CHECKED BY | DATE | REVIEWED | DATE | APPROVED | DATE | NO. | DATE | REVISIONS | DATE |
|-------------|----------|------------|------|---------------|------|----------|------|-----|------|-----------|------|
| Rich | Rich | | | ARCHITECTURAL | | | | 1 | | 4 | |
| | | | | ENGINEERING | | | | 2 | | 5 | |
| | | | | LANDSCAPE | | | | 3 | | 6 | |

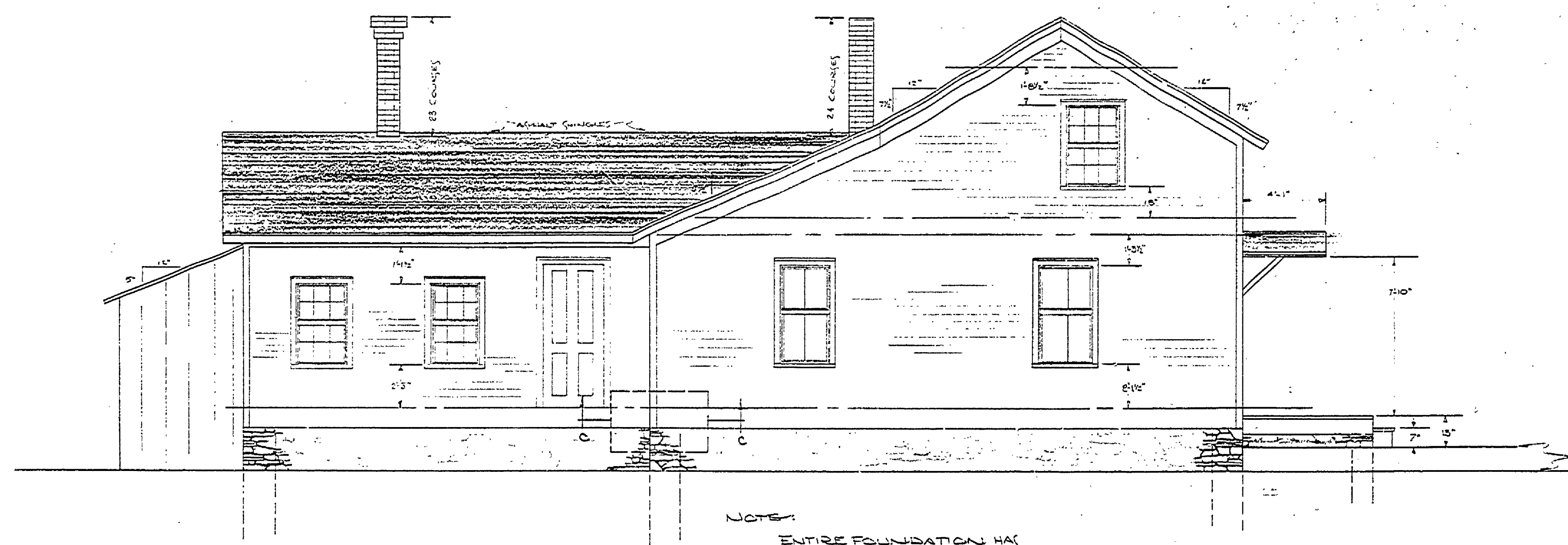


NORTH ELEVATION



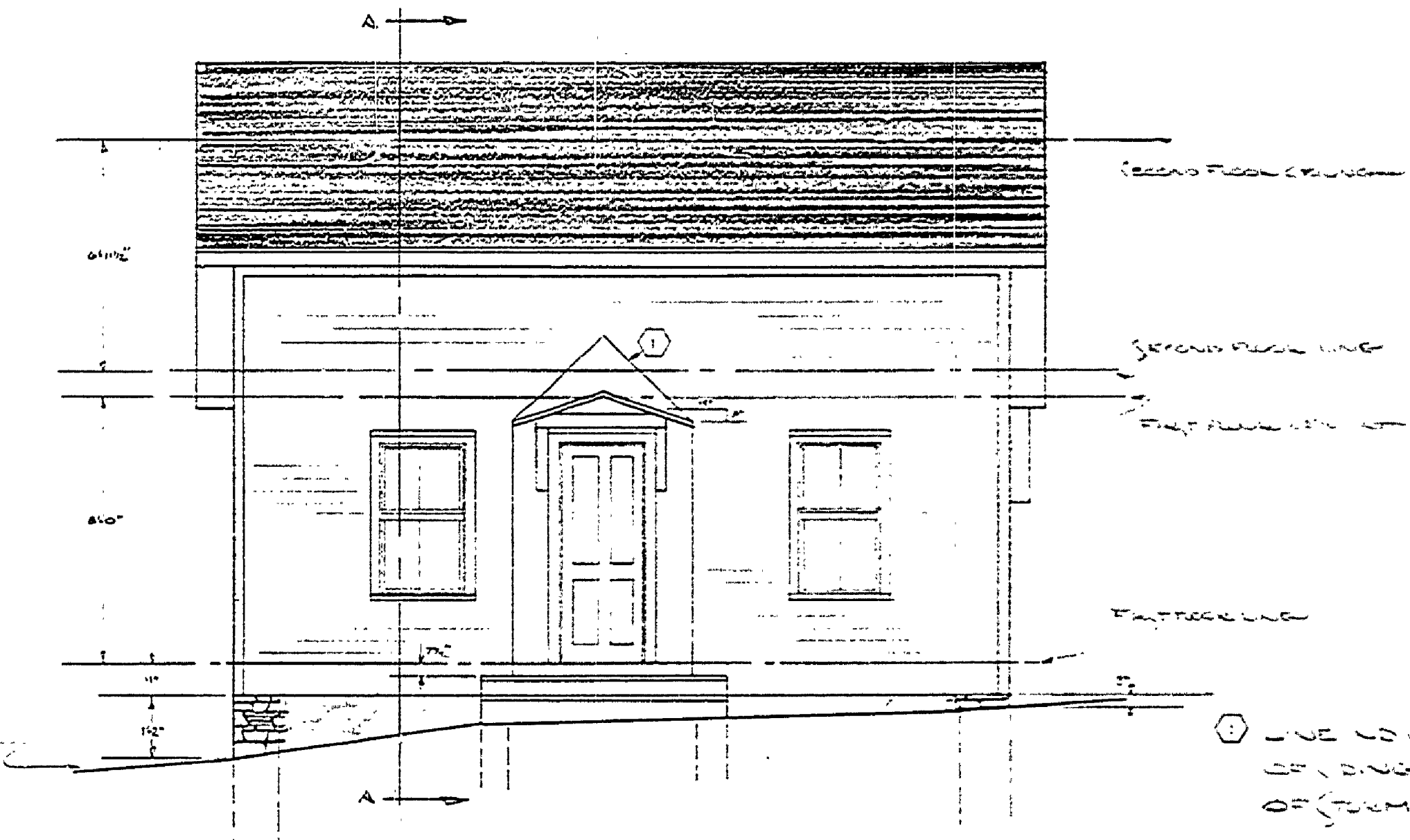
WEST ELEVATION

SCALE 1/4" = 1'-0"



SOUTH ELEVATION

NOTE: ENTIRE FOUNDATION HAS RECENTLY BEEN COVERED WITH A 1" CONCRETE CAP. FOUNDATION DEPTH IS UNDETERMINED.



EAST ELEVATION

① LINE LOCATE CENTER OF DOOR AFTER REMOVAL OF FORM WORK.

BUILDING #8

MICHIGAN DEPARTMENT OF CONSERVATION PARKS AND RECREATION DIVISION

MEASURED DRAWING FAYETTE HISTORICAL TOWN SITE FAYETTE GATE PARK

SHEET NO. 2 OF 2

PLAN NO. A-9