

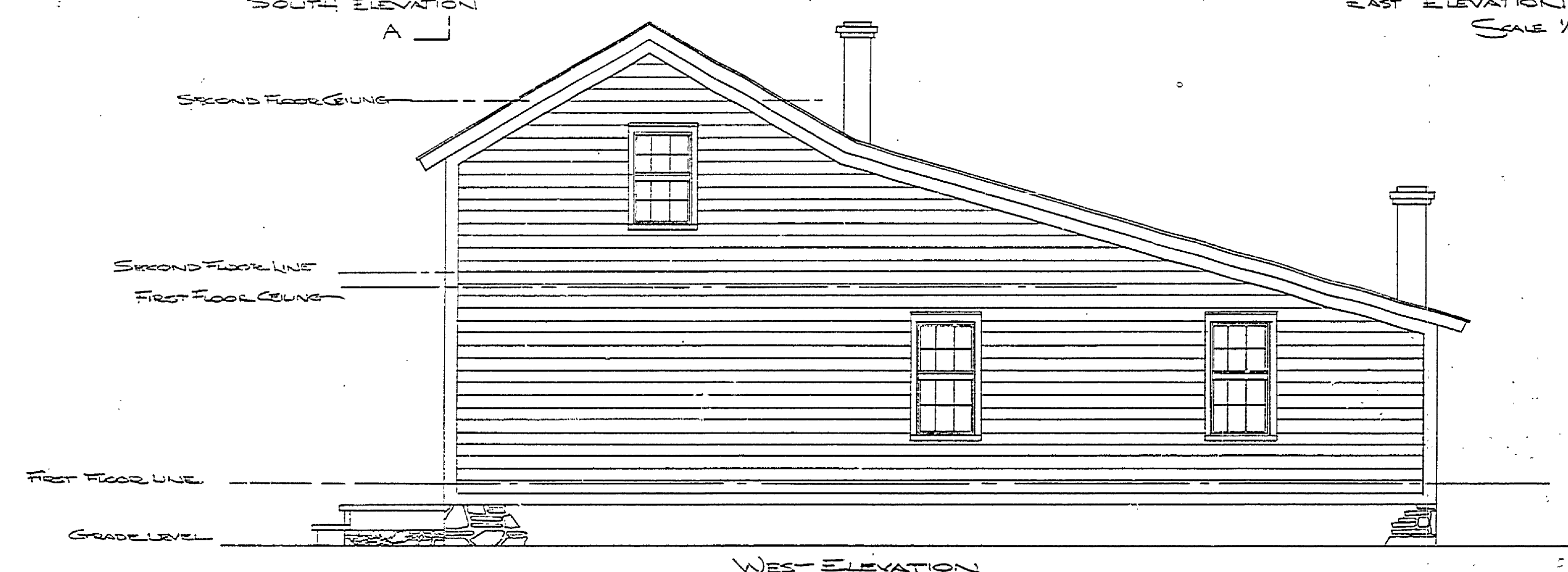
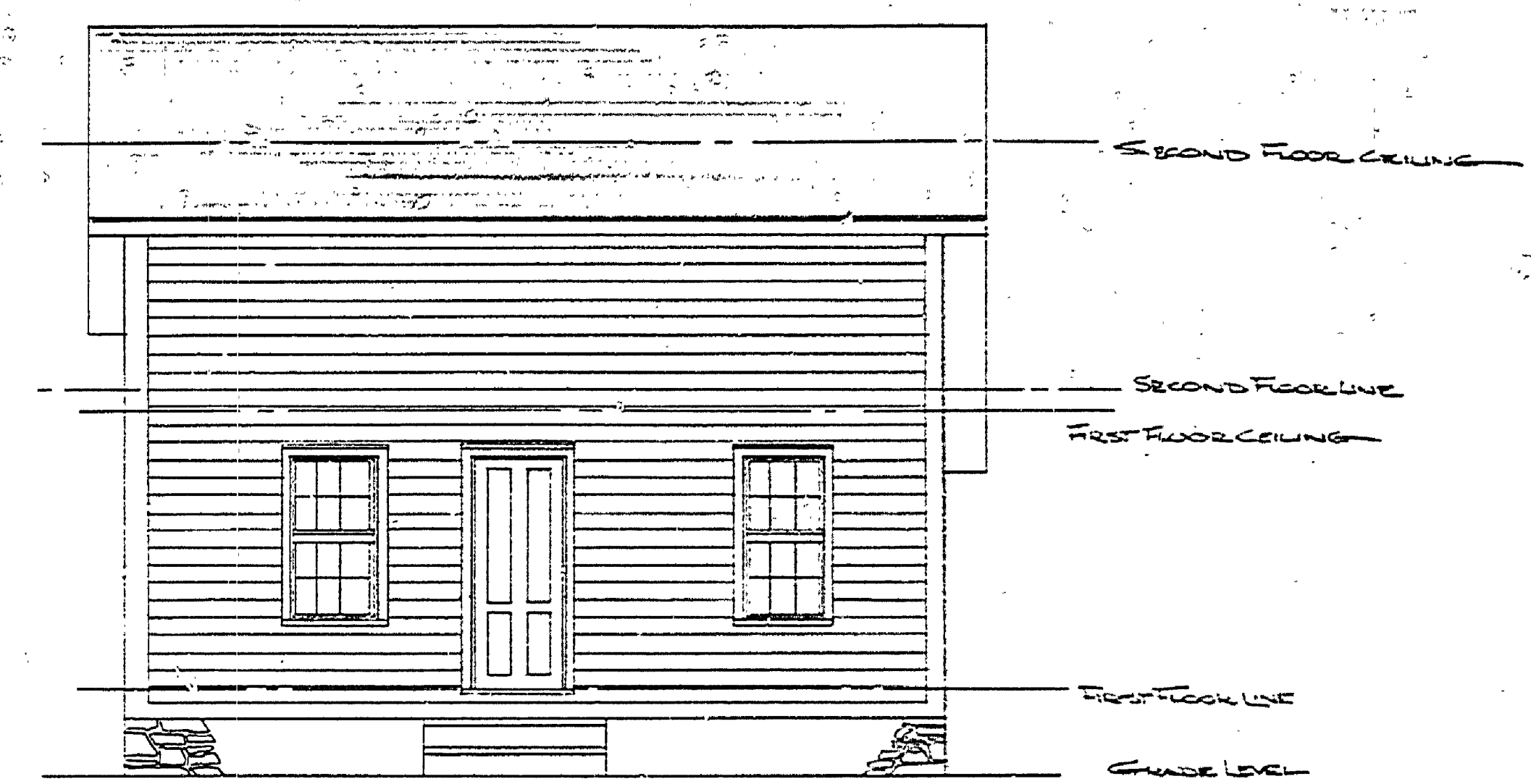
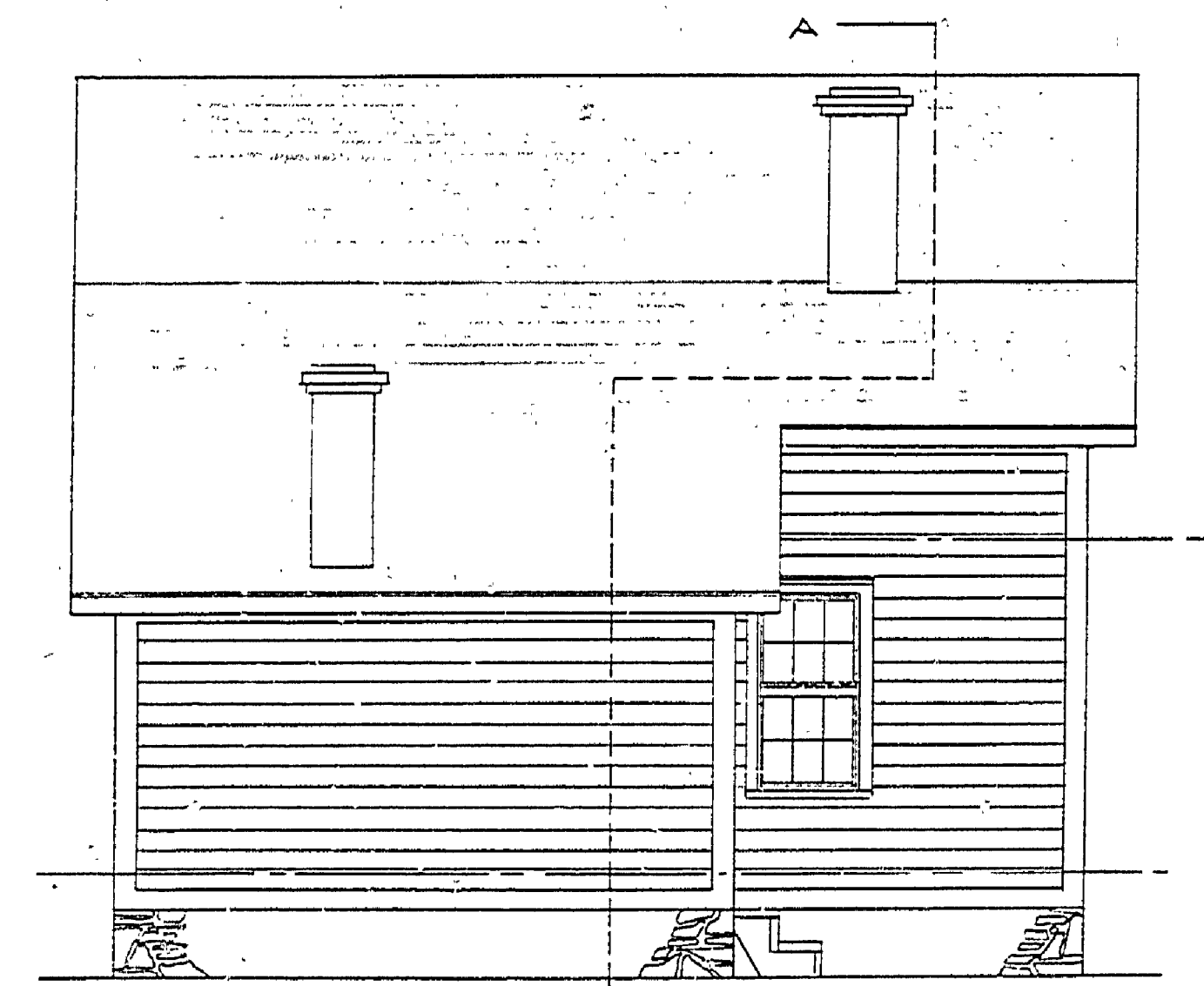
DATE	REVIEWED	DATE	APPROVED	DATE	NO.	DATE	BY
4/13/02	ARCHITECTURAL			1			
4/13/02	ENGINEERING			2			
	LANDSCAPE			3			

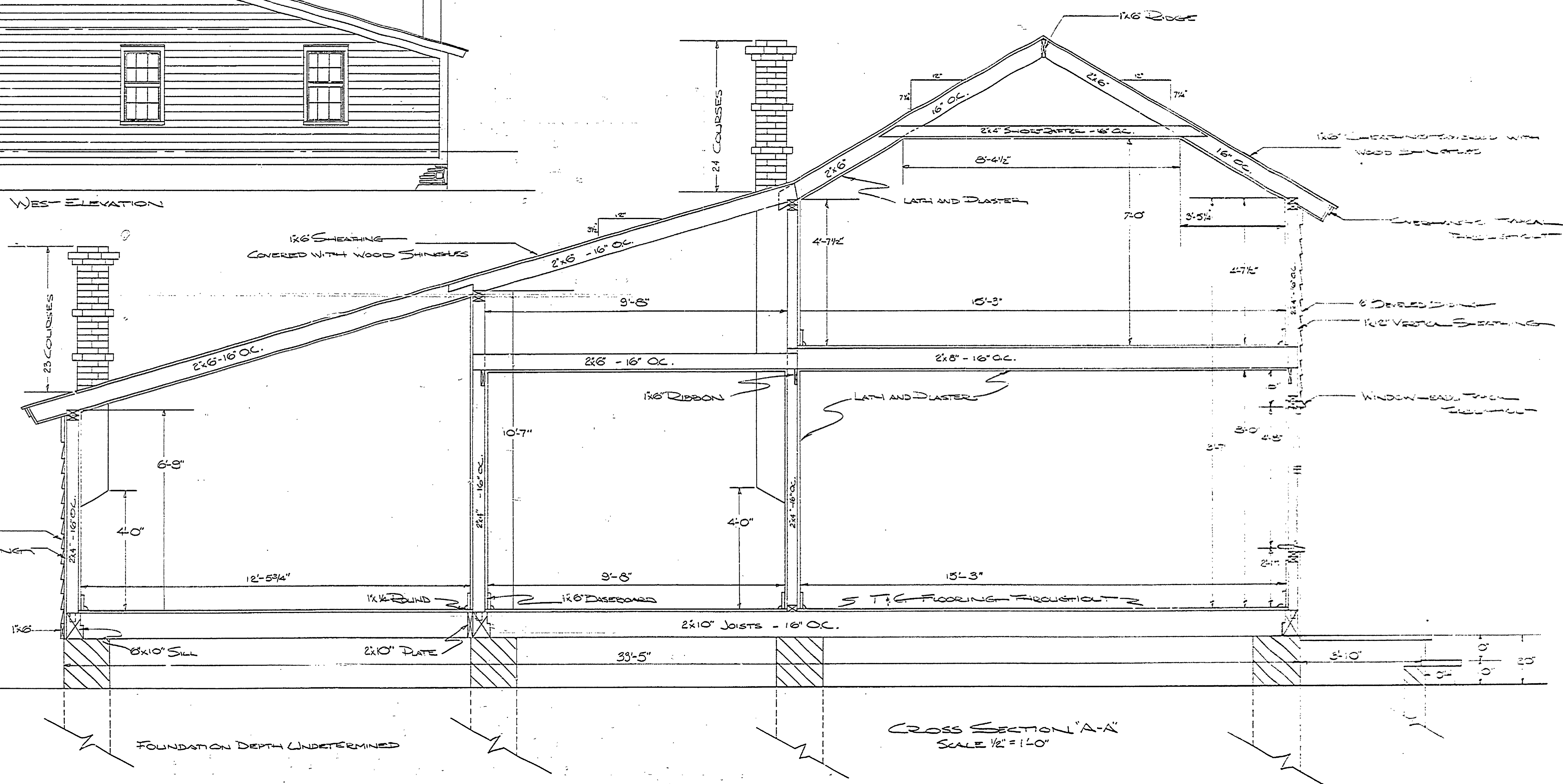
DATE	REVISIONS
	4
	5
	6

DESIGNED BY	ARCHITECTURAL
DRAWN BY	ENGINEERING
CHECKED BY	LANDSCAPE



**SPECIAL NOTE:**  
 THIS HOUSE WAS DESTROYED OR REMOVED AFTER 1907. ONLY LOCATION IS KNOWN  
 185' N. OF THE CENTERLINE OF THE RAILROAD FROM VALLEY, 1907. THE EXACT LOCATION OF THE  
 HOUSE WAS TAKEN FROM THE 1907 MAP. THE HOUSE WAS TAKEN FROM THE MAP AS FAR AS POSSIBLE. THE NUMBER  
 WAS ASSUMED. PLEASE BE AWARE OF THE POSSIBLE LOCATION OF EXISTING HOUSES  
 IN THE AREA.



**NOTE:**  
 DETAILS FOR OVERHANGS, DOORHEADS,  
 WINDOW HEADS, SAFETY RAILINGS, AND  
 GIMBLE SEATS WILL BE BUILT ON TYPICAL  
 CONSTRUCTION DET.

MICHIGAN  
 DEPARTMENT OF CONSERVATION  
 PARKS AND RECREATION DIVISION

NON-EXISTANT BUILDING  
 FAYETTE HISTORICAL TOWNSHIP  
 FAYETTE STATE PARK

SHEET  
 NO. 2  
 OF 2

PLAN NO.  
 A-14