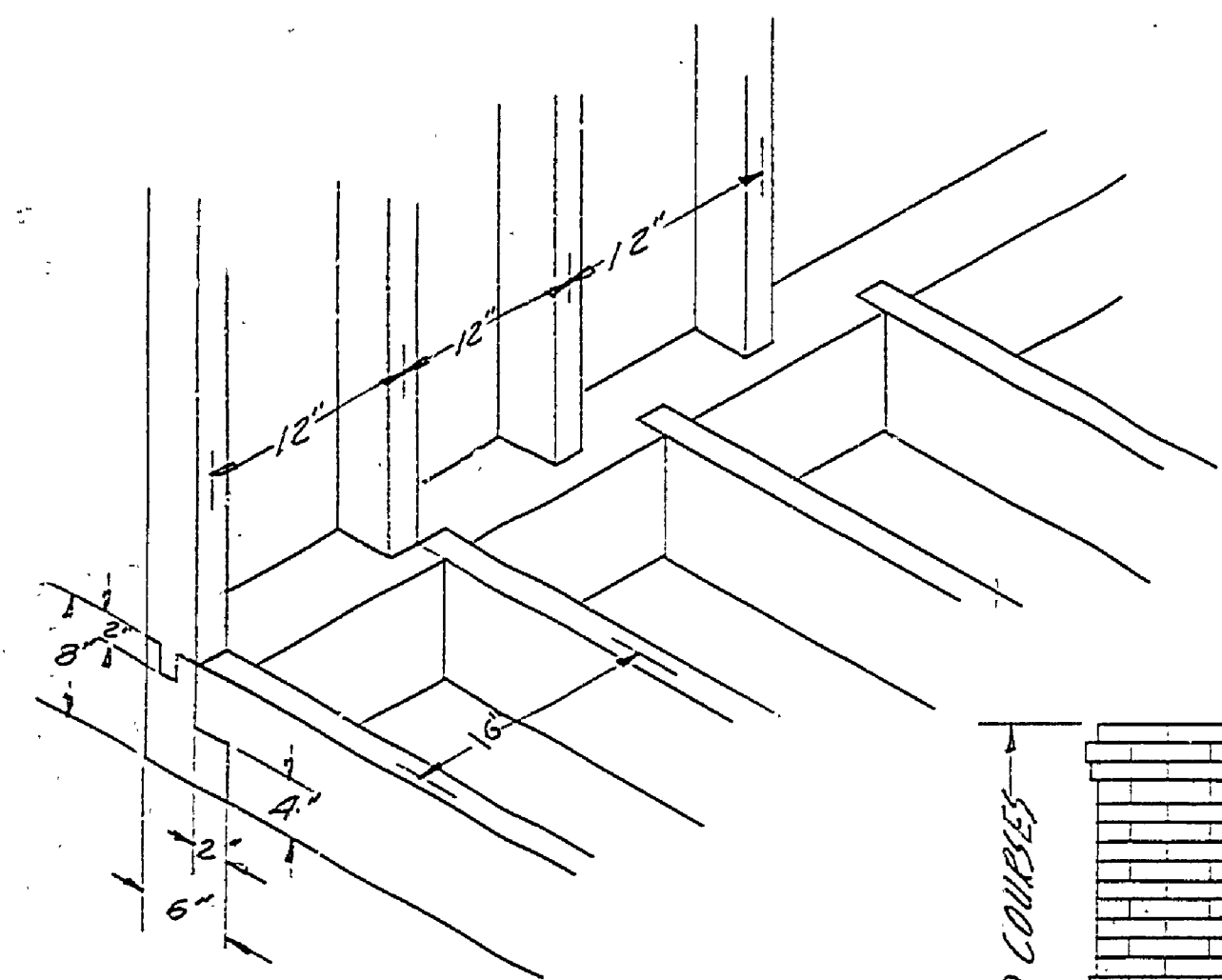
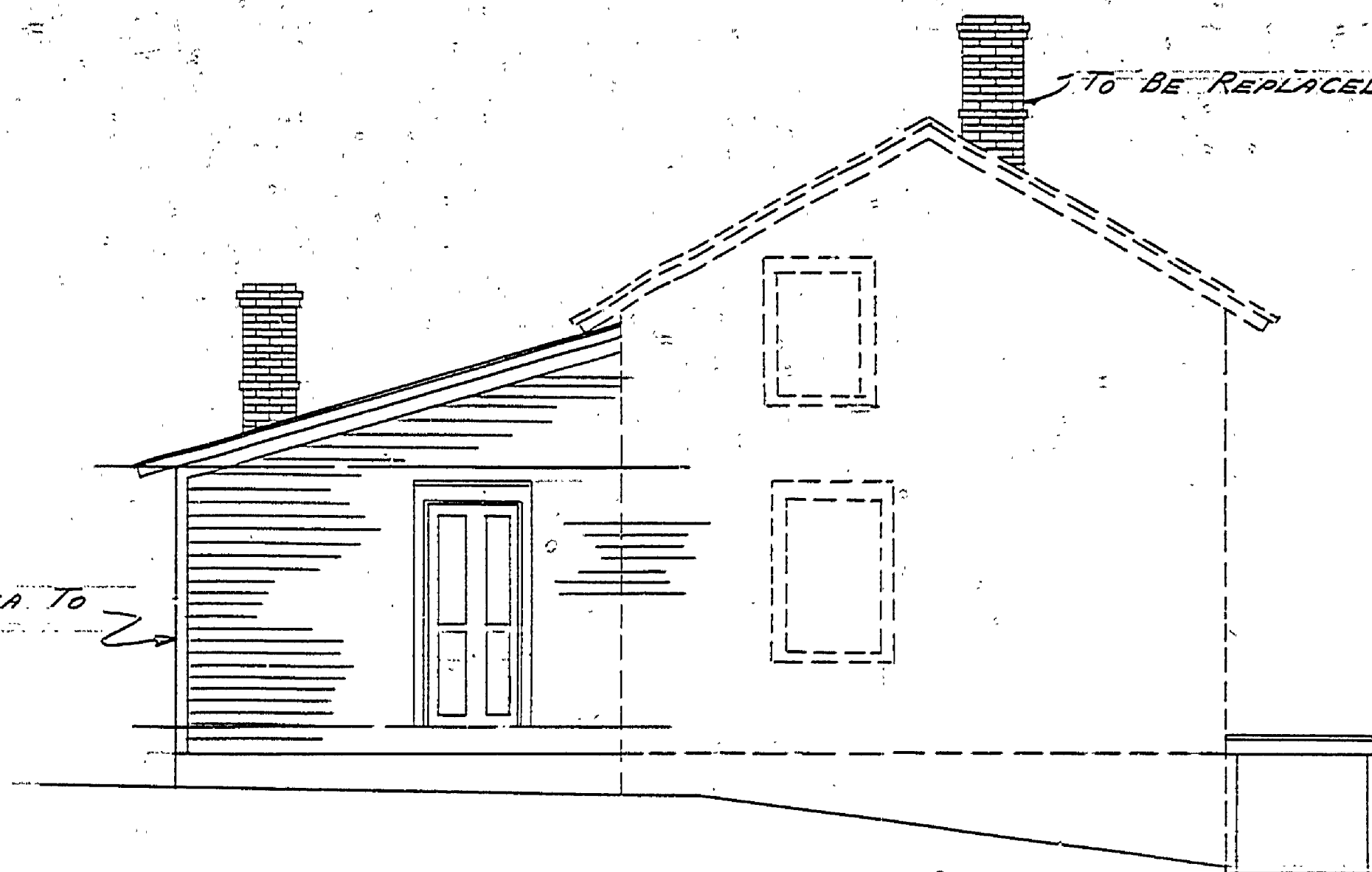


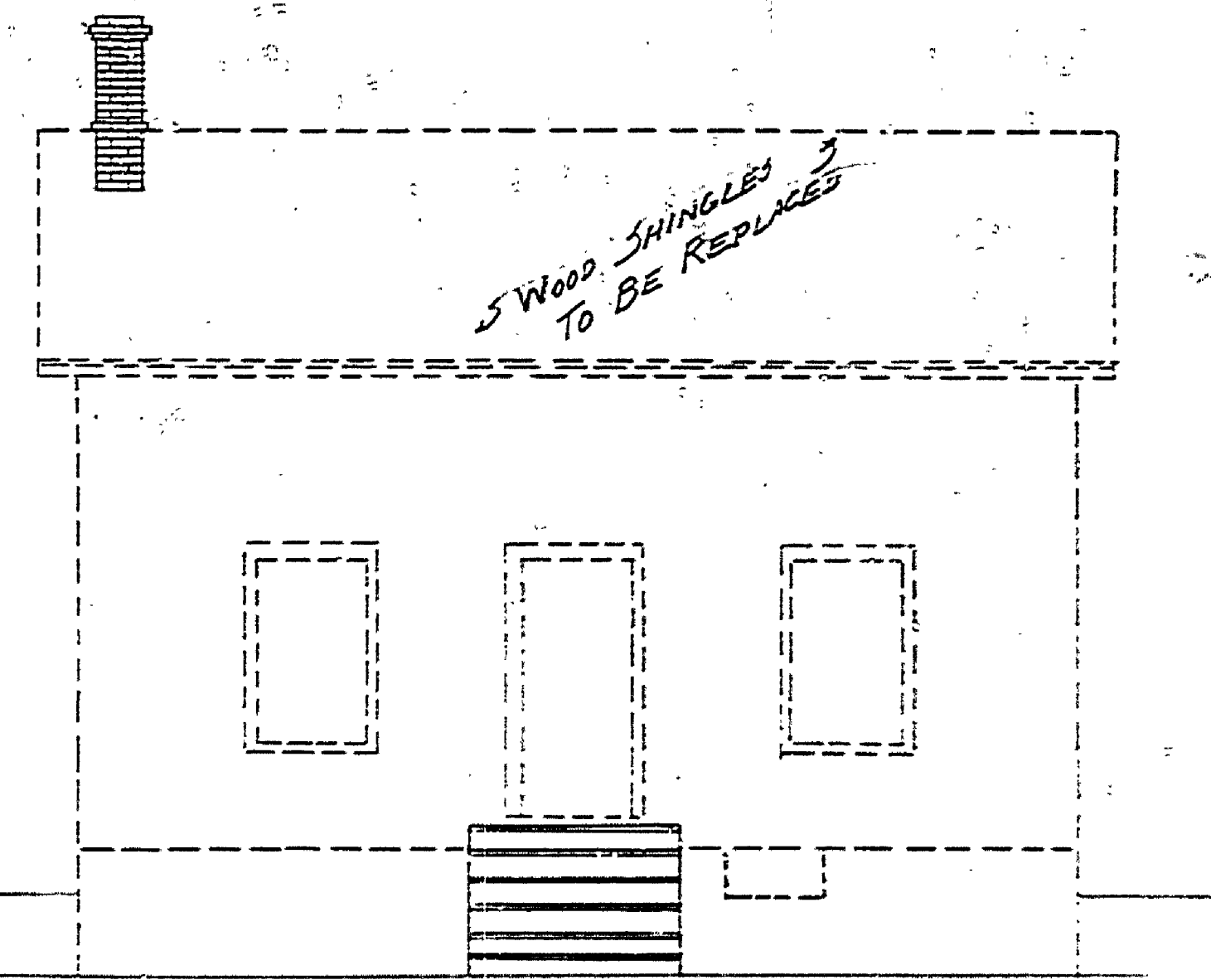
DATE	REVIEWED	DATE	APPROVED	DATE NO.	DATE	REVISIONS	DATE	BY
3-8-62	ARCHITECTURAL			1		4		
3-8-62	ENGINEERING			2		5		
	LANDSCAPE			3		6		



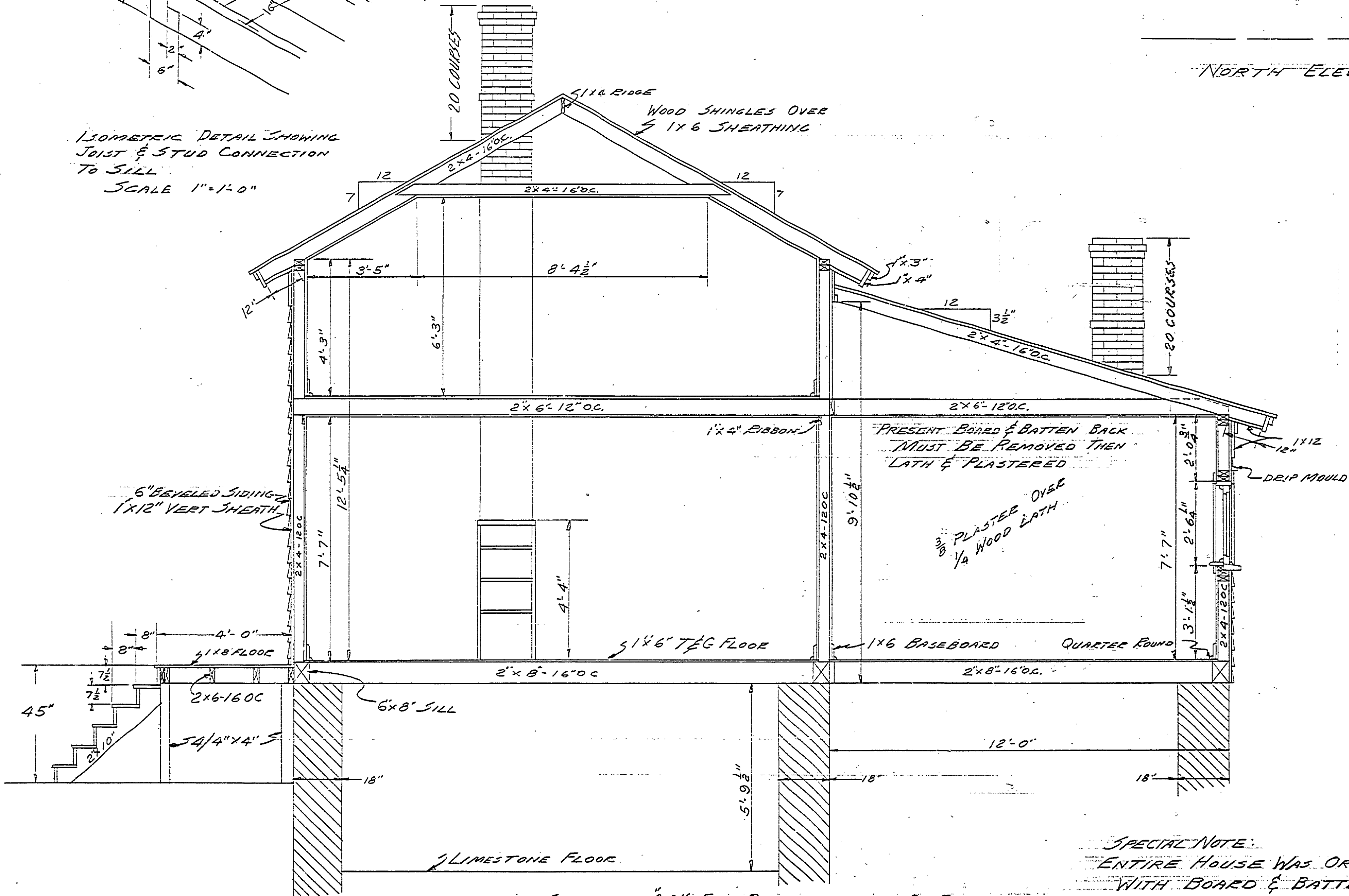
ISOMETRIC DETAIL SHOWING
JOIST & STUD CONNECTION
TO SILL
SCALE 1"=1'-0"



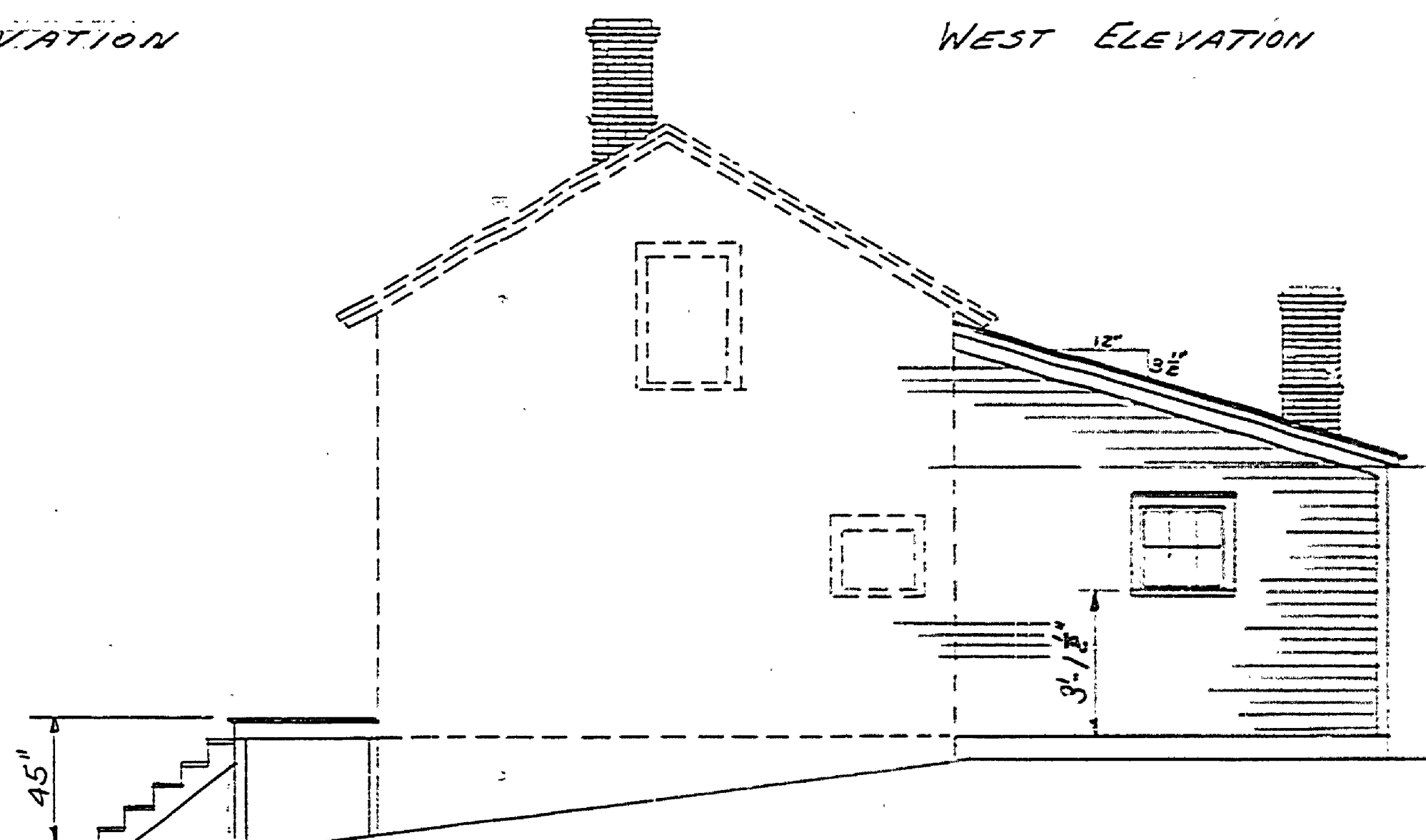
NORTH ELEVATION



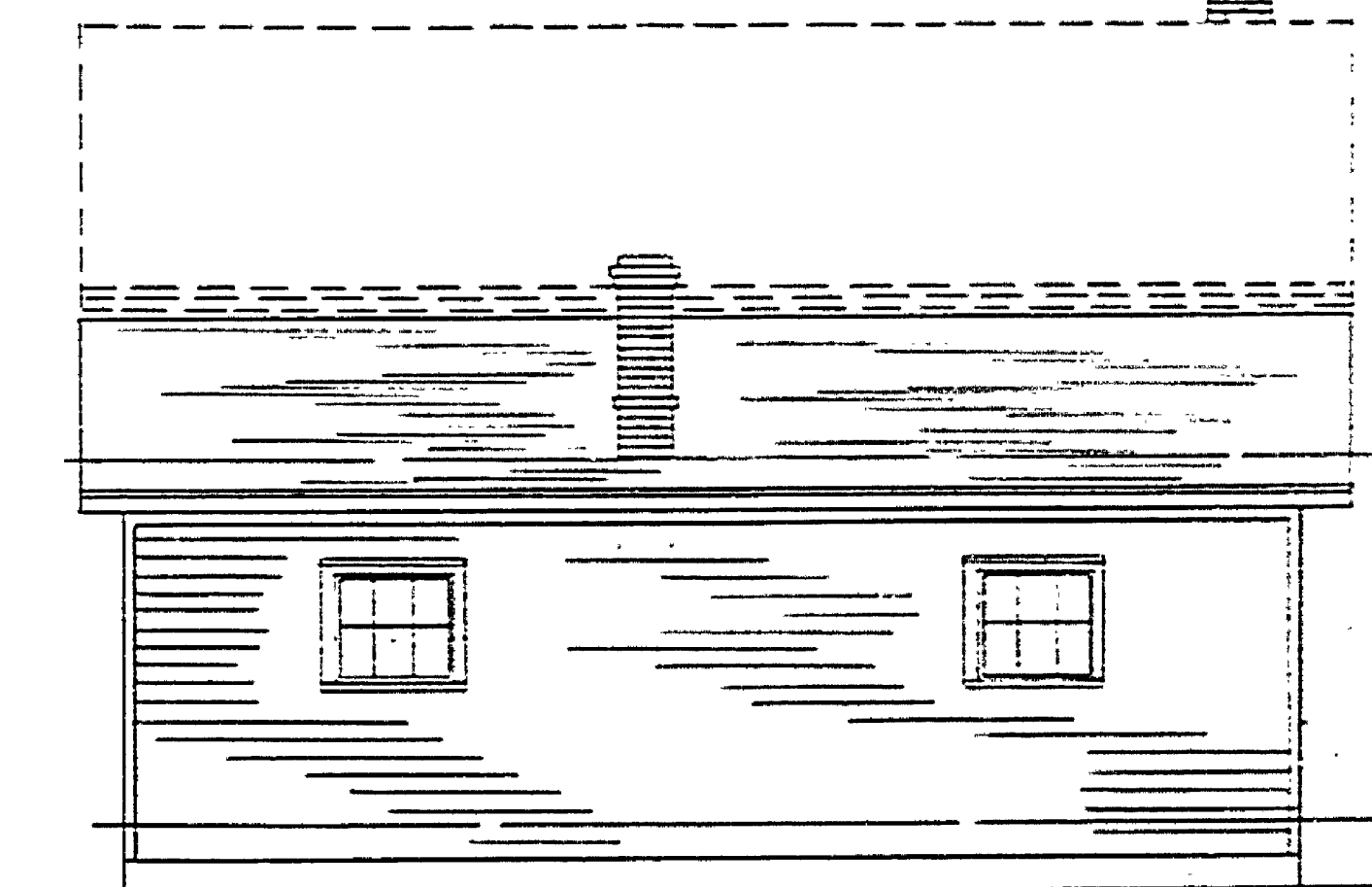
WEST ELEVATION



SECTION "AA" FOR RECONSTRUCTION OF FRONT
PORCH & REAR ROOMS
SCALE 1/2"=1'-0"



SOUTH ELEVATION



EAST ELEVATION
ELEVATION SCALE 1/4"=1'-0"

SPECIAL NOTE:
ENTIRE HOUSE WAS ORIGINALLY COVERED
WITH BOARD & BATTEN SIDING

DESIGNED BY *Richard Kelly*
DRAWN BY *Richard Kelly*
CHECKED BY

MICHIGAN
DEPARTMENT OF CONSERVATION
PARKS AND RECREATION DIVISION

RESTORATION DRAWINGS
FAYETTE HISTORICAL TOWNSITE
FAYETTE STATE PARK

SHEET
NO. 2
OF 2

BLDG. #18
PLAN NO.
A-182