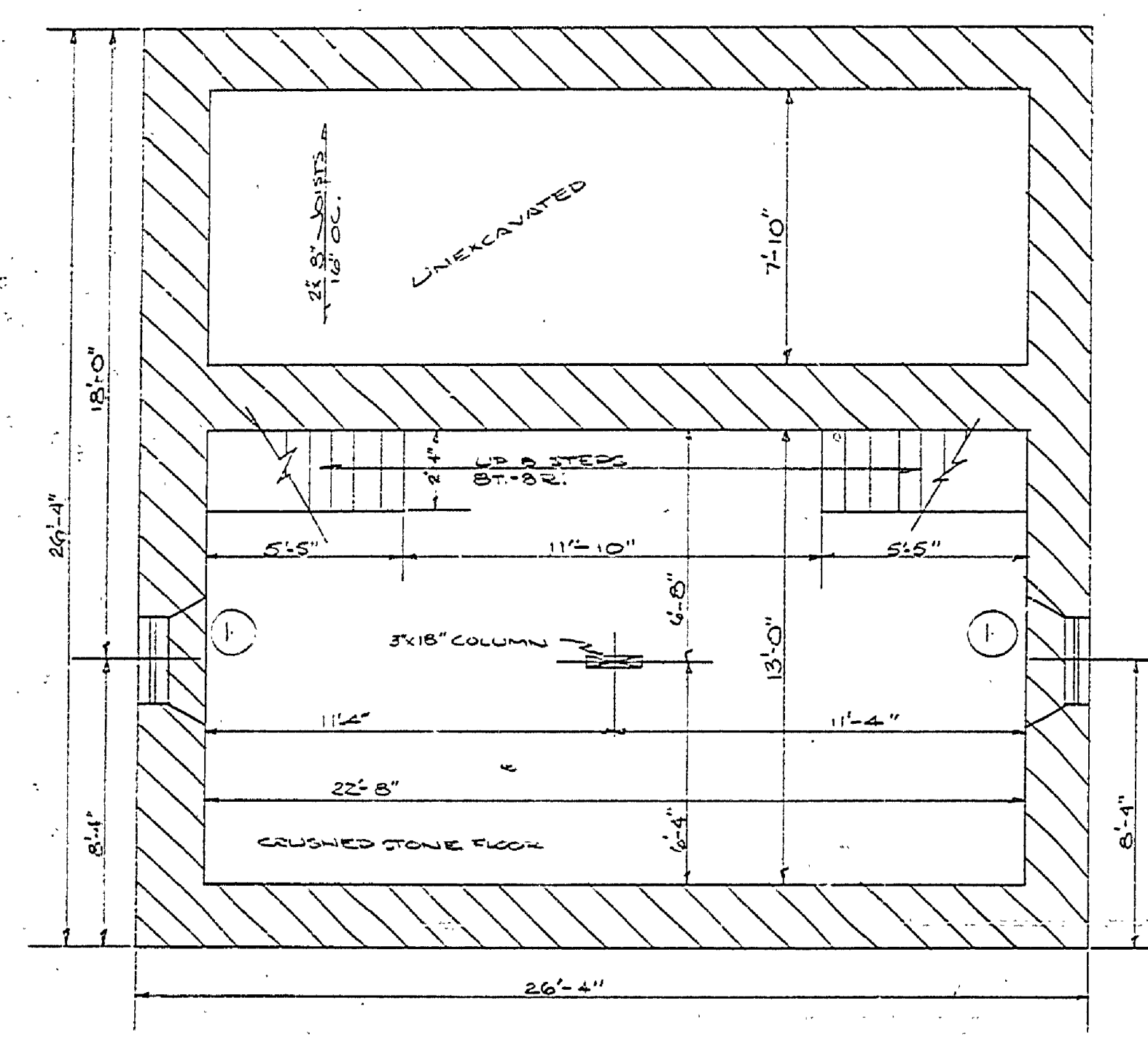
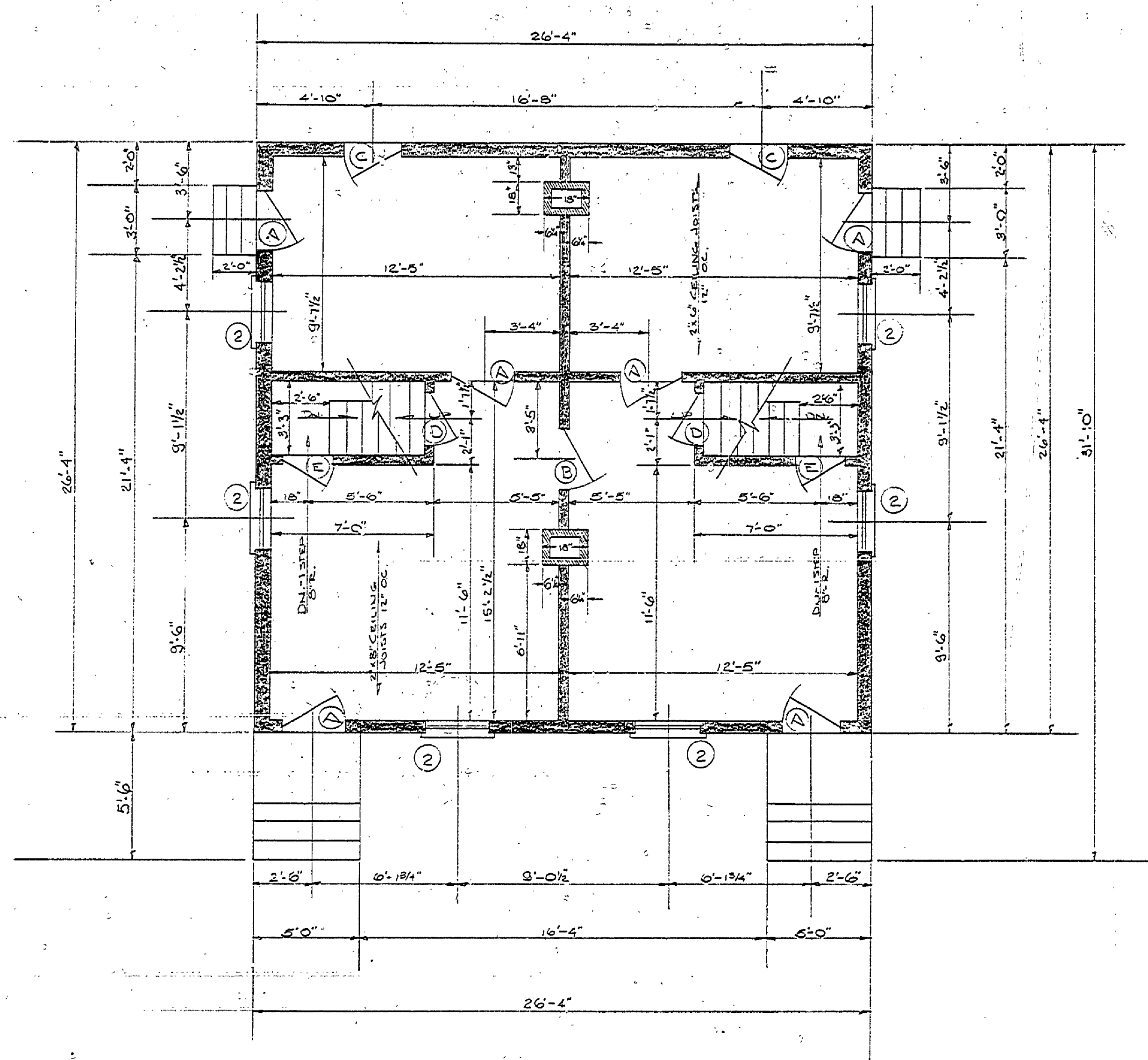


DESIGNED BY RICK	DATE 4/25/62	REVIEWED ARCHITECTURAL	DATE	APPROVED	DATE NO.	DATE BY	REVISIONS
DRAWN BY RICK	4/24/62	ENGINEERING			1		4
CHECKED BY		LANDSCAPE			2		5
					3		6

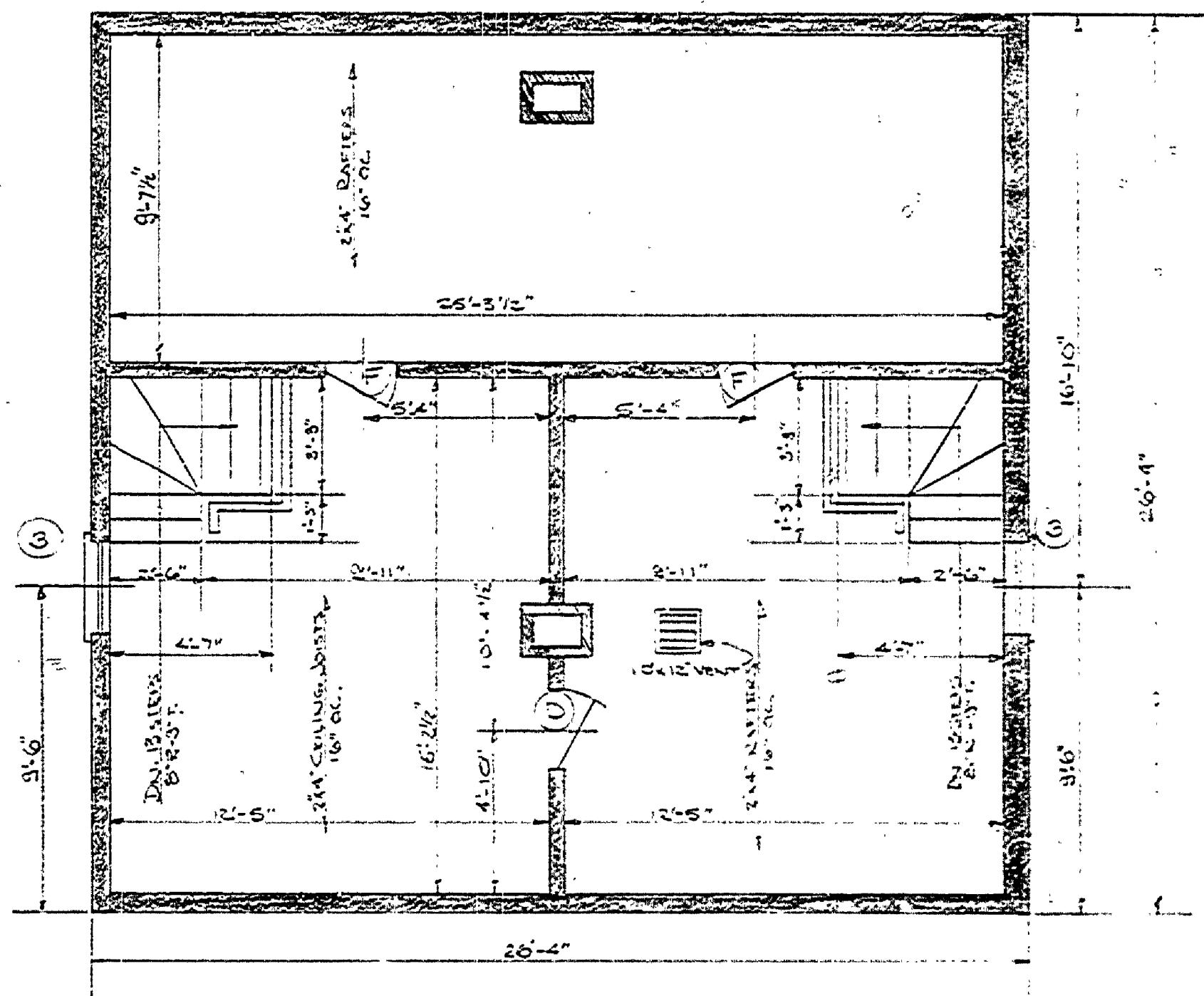


BASEMENT FOUNDATION PLAN

NOTE:  
ALL WALLS 22" THICK OF NATURAL LIMESTONE RUBBLE CONSTRUCTION.



FIRST FLOOR PLAN  
SCALE 1/4" = 1'-0"



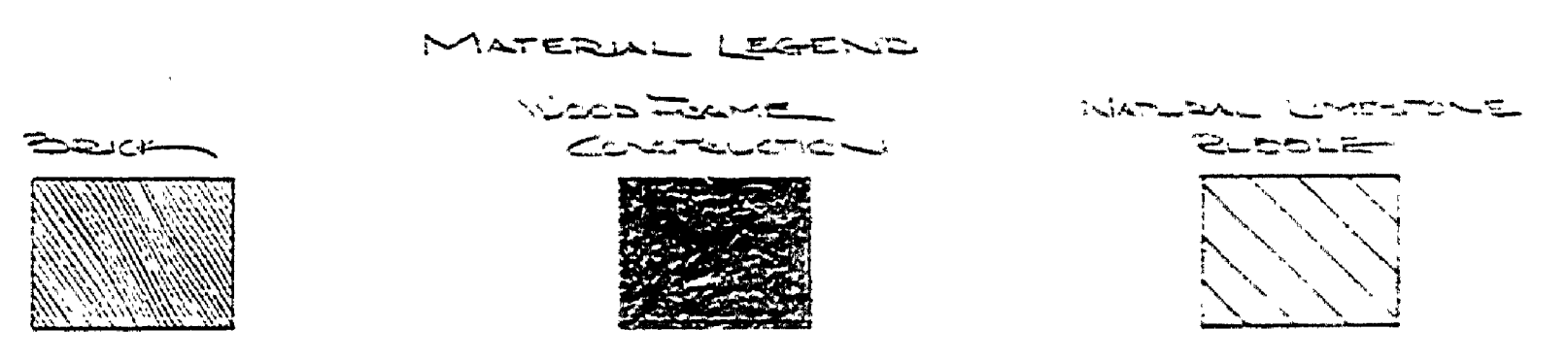
SECOND FLOOR PLAN

NOTE:  
DETAILS FOR CONSTRUCTION OF DOOR HEADS, WINDOW HEADS, SILLINGS, CUPBOARD CASES AND SAFETY RAILS, WILL BE FOUND ON FAYETTE TYPICAL CONSTRUCTION SHEET.

SPECIAL NOTE:  
THIS HOUSE WAS REMOVED OR DESTROYED AFTER 1907 SURVEY. LOCATION IS AS SHOWN ON 1895 MAP. OUTLINE DIMENSIONS WERE DERIVED FROM MEASUREMENT OF FOUNDATION REMAINS AND STUDY OF 1907 SURVEY MAPS AND PHOTOGRAPHS. EXTENSIVE DETAIL WAS TAKEN FROM PHOTOGRAPHS TO MAKE THEM AS AUTHENTIC AS POSSIBLE. THE INTERIOR WAS ASSUMED BUT DRAWN, AS FAR AS POSSIBLE, TO CORRELATE WITH THE LAYOUT OF TYPICAL EXISTING HOUSES IN THE FAYETTE AREA.

SYMBOL	REQ'D	SIZE	TYPE	GLASS	TRANS	HARDWARE	REMARKS
A	6	2'-0" x 6'-8"	PANEL	NONE	NONE	ST'S	NONE
B	1	2'-8" x 6'-6"	"	"	"	"	"
D	2	2'-6" x 6'-6"	"	"	"	"	"
E	6	2'-4" x 6'-6"	"	"	"	"	"
F	2	2'-2" x 5'-4"	"	"	"	"	"
G	2	3'-0" x 4'-2"	FRAME	"	"	"	ATTIC ACCESS

SYMBOL	REQ'D	SIZE	SASH	GLASS	TYPE	REMARKS
1	2	2'-6" x 1'-6"		3/8x10'	FIXED	NONE
2	6	2'-7 1/2" x 5'-1 1/2"	2'-6 3/4" x 2'-7 1/2"	6/8" x 14"	D.H.	COUNTER BAL.
3	2	2'-7 1/4" x 4'-4"	2'-3" x 2'-7 1/4"	6/8" x 12"	D.H.	COUNTER BAL.



IDENTICAL BUILDINGS  
# 20 & 21 AND # 22 & 23  
BOTH DOUBLE OCEANFRONT

MICHIGAN  
DEPARTMENT OF CONSERVATION  
PARKS AND RECREATION DIVISION

CONCEPTUAL DRAWING  
FAYETTE HISTORICAL TOWNSITE  
FAYETTE STATE PARK

SHEET NO. 1 OF 3  
PLAN NO. A-20