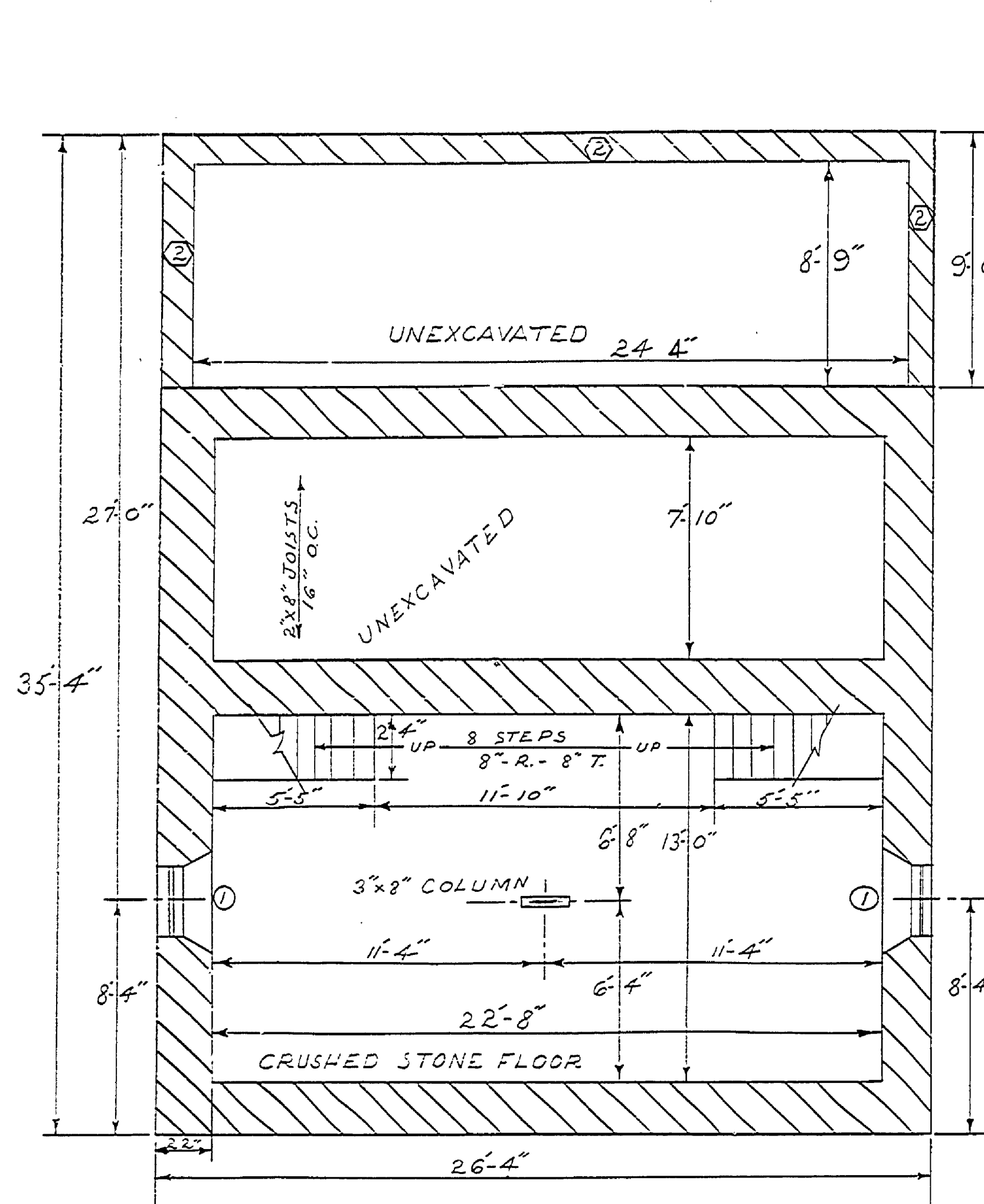
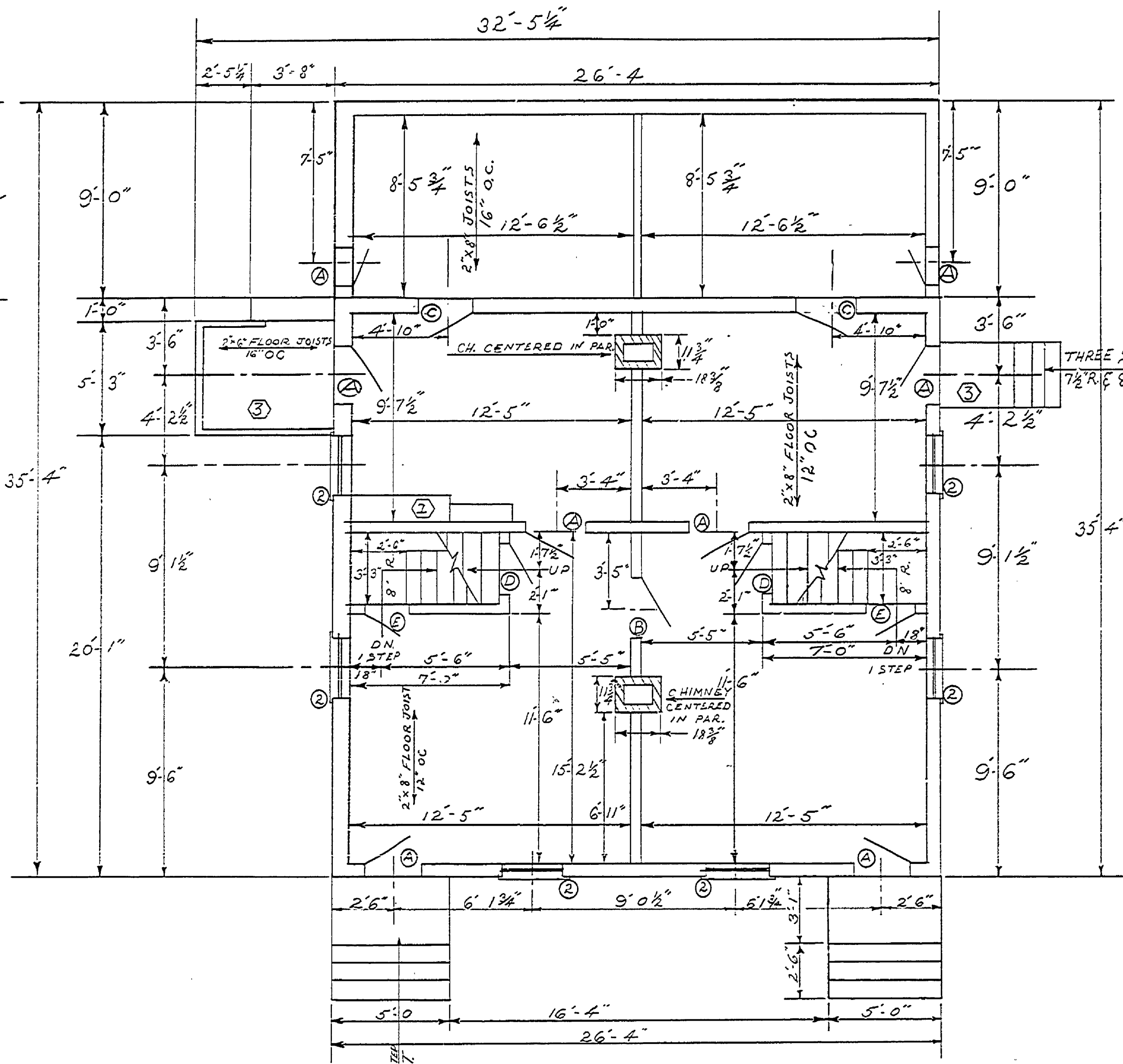


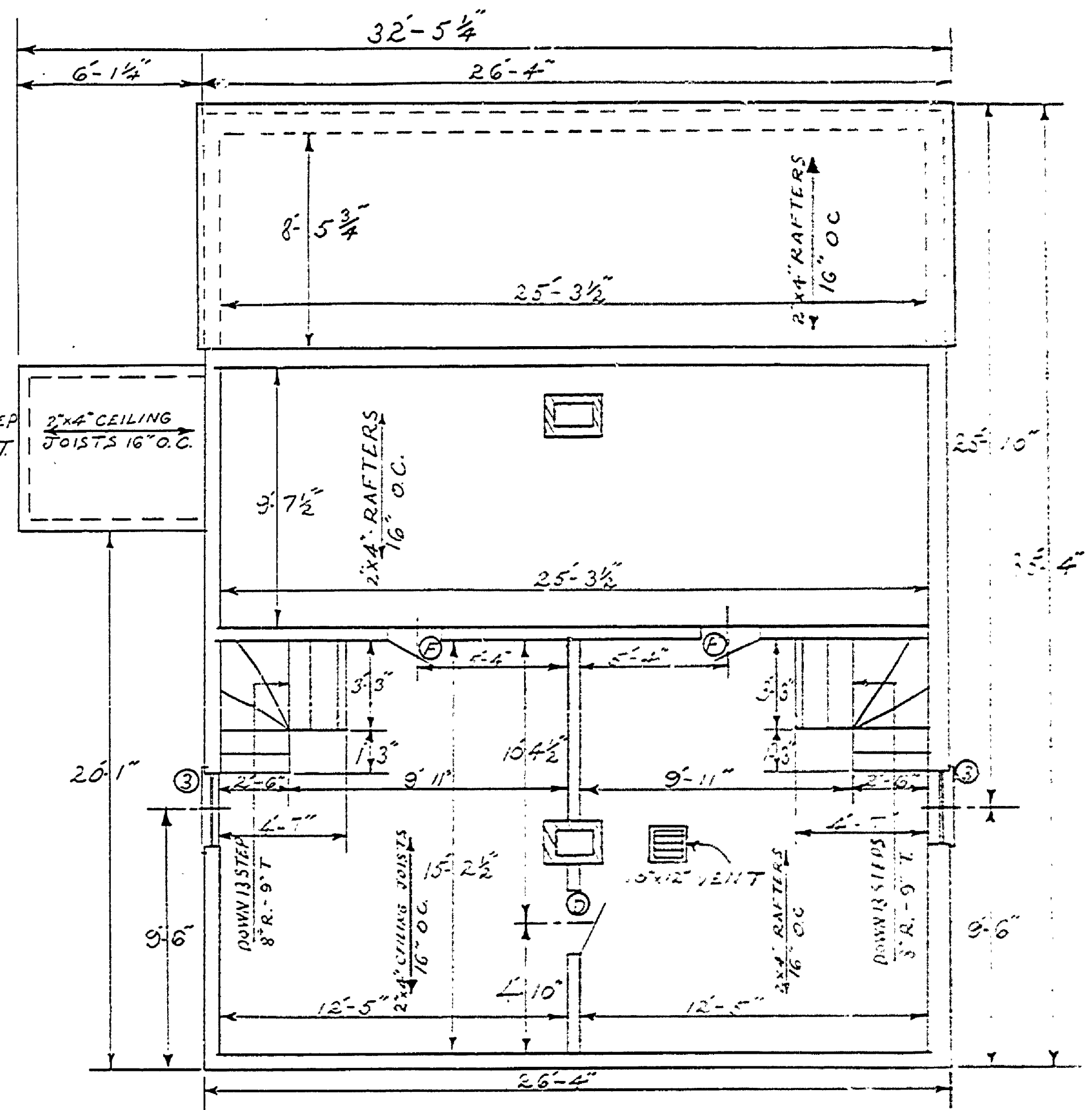
DESIGNED BY	DATE	REVIEWED	DATE	APPROVED	DATE	NO.	DATE	BY	REVISIONS	DATE	BY
DRAWN BY	5/7/23	ARCHITECTURAL				1			4		
CHECKED BY	5/17/23	ENGINEERING				2			5		
		LANDSCAPE				3			6		



BASEMENT & FOUNDATION PLAN
 NOTE
 ALL WALLS NATURAL LIMESTONE RUBBLE CONSTRUCTION



FIRST FLOOR PLAN
 SCALE: 1/4" = 1'-0"



SECOND FLOOR PLAN

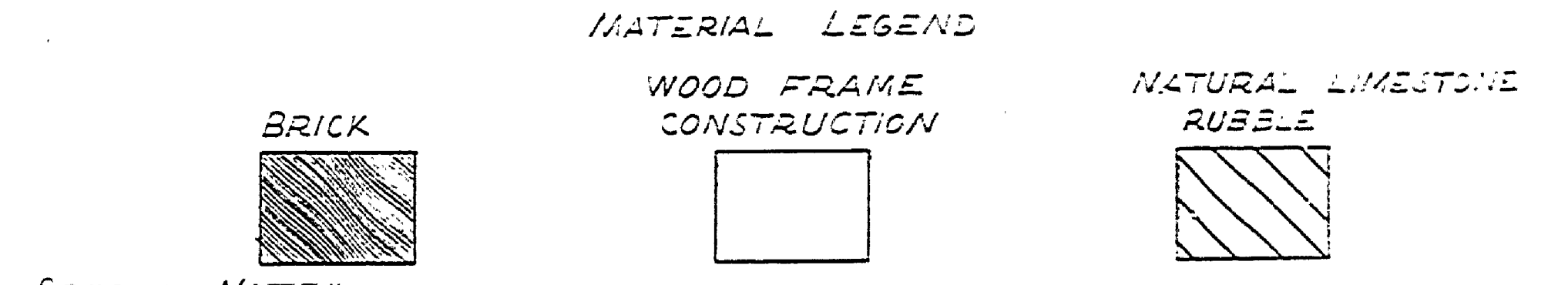
- NOTES**
- ① — KITCHEN CABINETES - SEE DETAIL.
 - ② — LIMESTONE RUBBLE LAID ON SURFACE.
 - ③ — SIDE PORCHES MAY HAVE HAD SIDE WALLS AND ROOF, AS SHOWN BY NORTH PORCH. NORTH PORCH PRESUMPTIVELY ADDED BY OCCUPANTS.

DOOR SCHEDULE

MK.	REQ'D	SIZE	TYPE	GLASS	TRANS	HARDWARE	REMARKS
A	5	2'-8" X 6'-8"	PANEL	NONE	NONE	ST'D	NONE
B	1	2'-8" X 6'-6"	"	"	"	"	"
C	2	2'-6" X 6'-6"	"	"	"	"	"
D	3	2'-4" X 6'-6"	"	"	"	"	"
E	2	2'-2" X 5'-4"	"	"	"	"	"
F	2	1'-8" X 4'-2"	FRAME	"	"	"	ATTIC ACCESS

WINDOW SCHEDULE

MK.	REQ'D	SIZE	SASH	GLASS	TYPE	REMARKS
1	2	2'-6" X 1'-6"		3/8" X 10"	FIXED	NONE
2	6	2'-7 1/2" X 5'-1 1/2"	2'-6 3/4" X 2'-7 3/4"	6/8" X 14"	D. H.	COUNTER BAL.
3	2	2'-7 1/2" X 4'-4"	2'-3" X 2'-7 1/4"	6/8" X 12"	D. H.	COUNTER BAL.



SPECIAL NOTE
 THIS STRUCTURE HAS BEEN DESTROYED OR MOVED SINCE THE 1907 SURVEY. FOUNDATION DOES NOT EXIST AND LOCATION IS SHOWN ON THE 1955 MAP. DIMENSIONS AND EXTERIOR DETAIL WERE ARRIVED AT THROUGH STUDY OF FOUNDATION SHARDS, PHOTOGRAPHS, SURVEY MAPS, AND DATA TO KEEP THEM AS AUTHENTIC AS POSSIBLE. THE INTERIOR PLAN AND DETAIL WAS ASSUMED, BUT, FOLLOW AS CLOSELY AS POSSIBLE THE TYPICAL LAYOUTS AND DETAILS OF EXISTING STRUCTURES OF ITS TYPE IN FAYETTE OR THE FAYETTE AREA.

MICHIGAN DEPARTMENT OF CONSERVATION PARKS AND RECREATION DIVISION

CONCEPTUAL DRAWING FAYETTE HISTORICAL TOWNSITE FAYETTE STATE PARK

SHEET NO. 7 OF 7 PLAN NO. 20521 # 22523