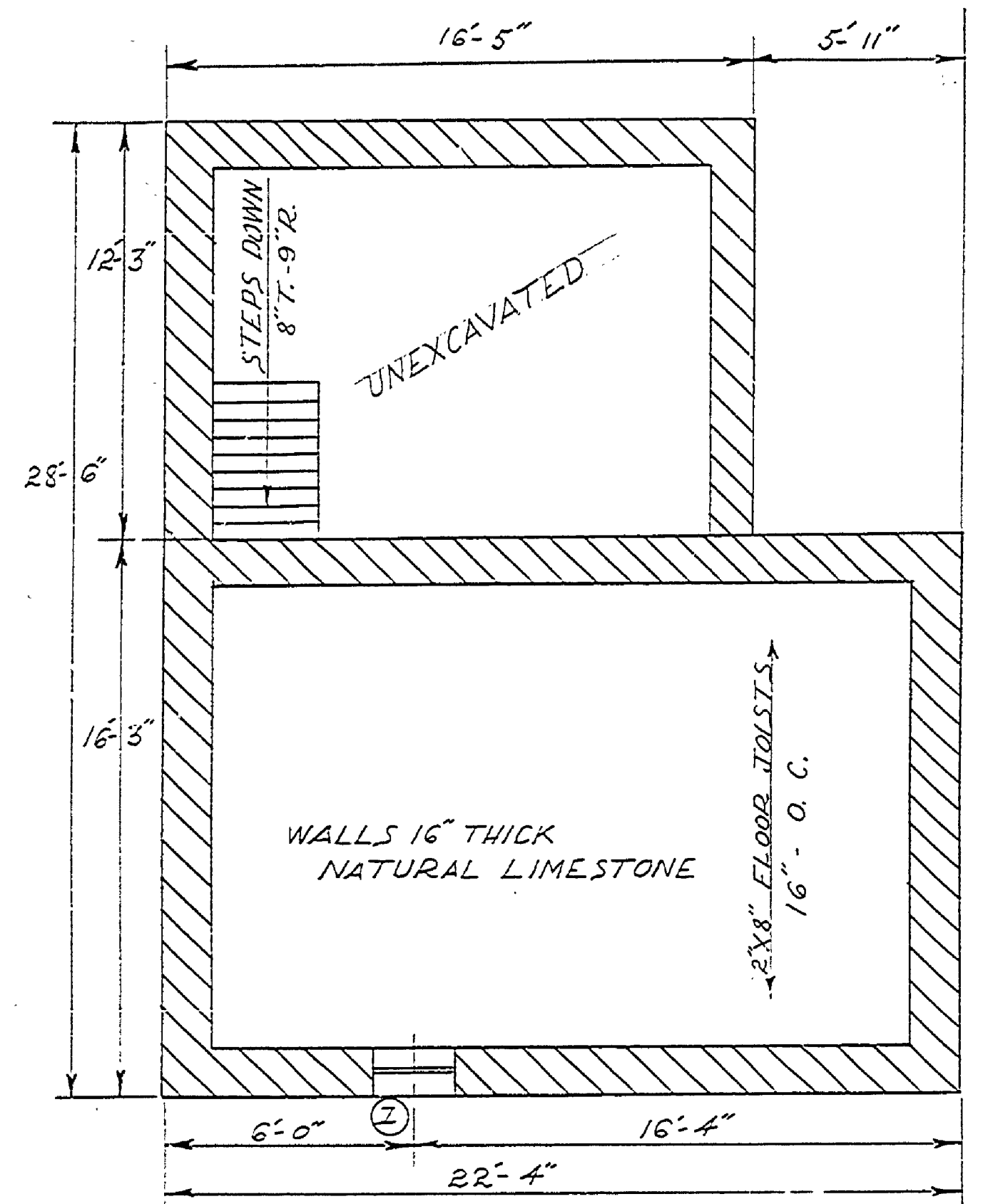
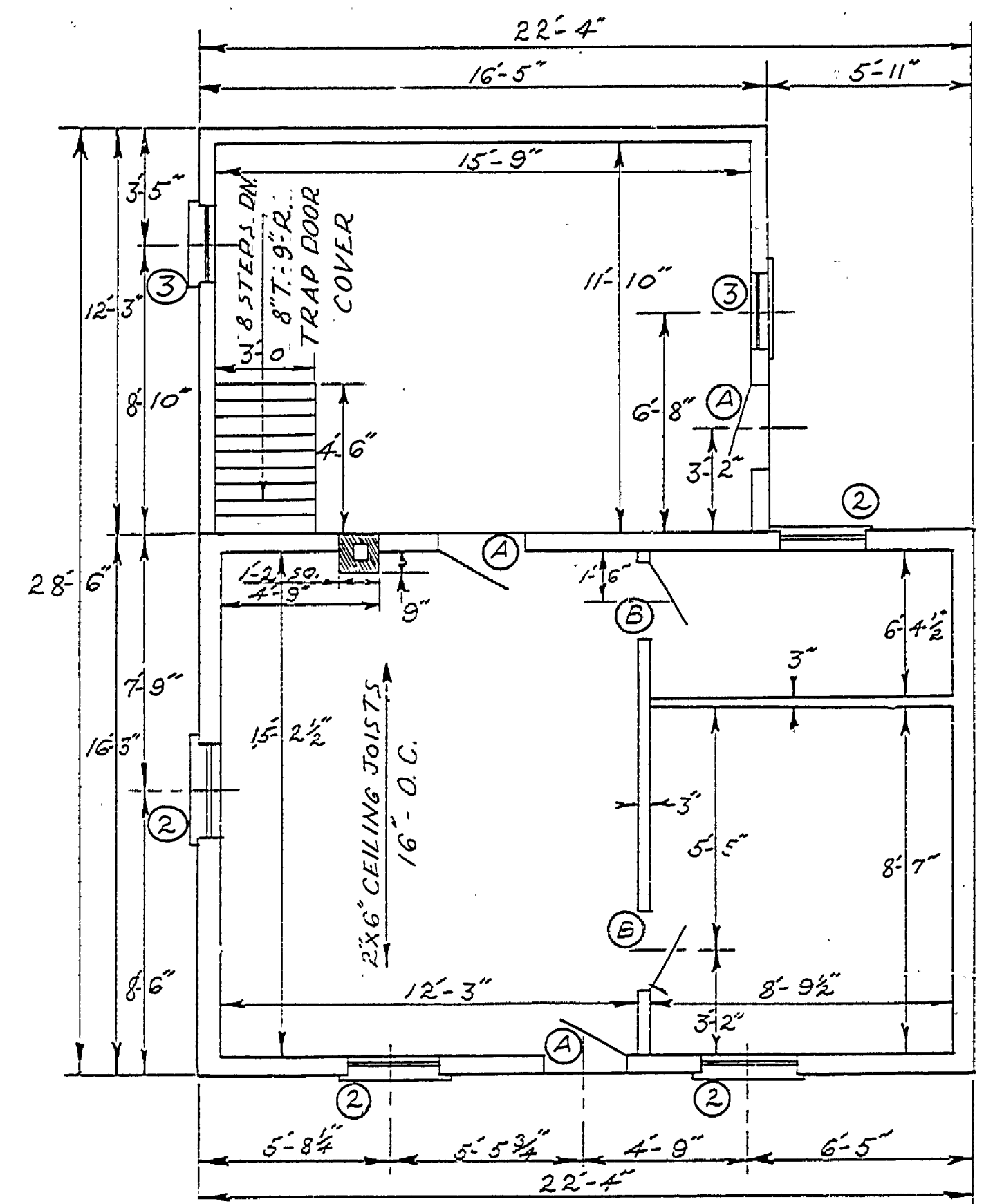


DESIGNED BY	DATE	REVIEWED	DATE	APPROVED	NO.	DATE	BY
DRAWN BY	5/22/63	ARCHITECTURAL			1		
CHECKED BY		ENGINEERING			2		
		LANDSCAPE			3		



FOUNDATION PLAN

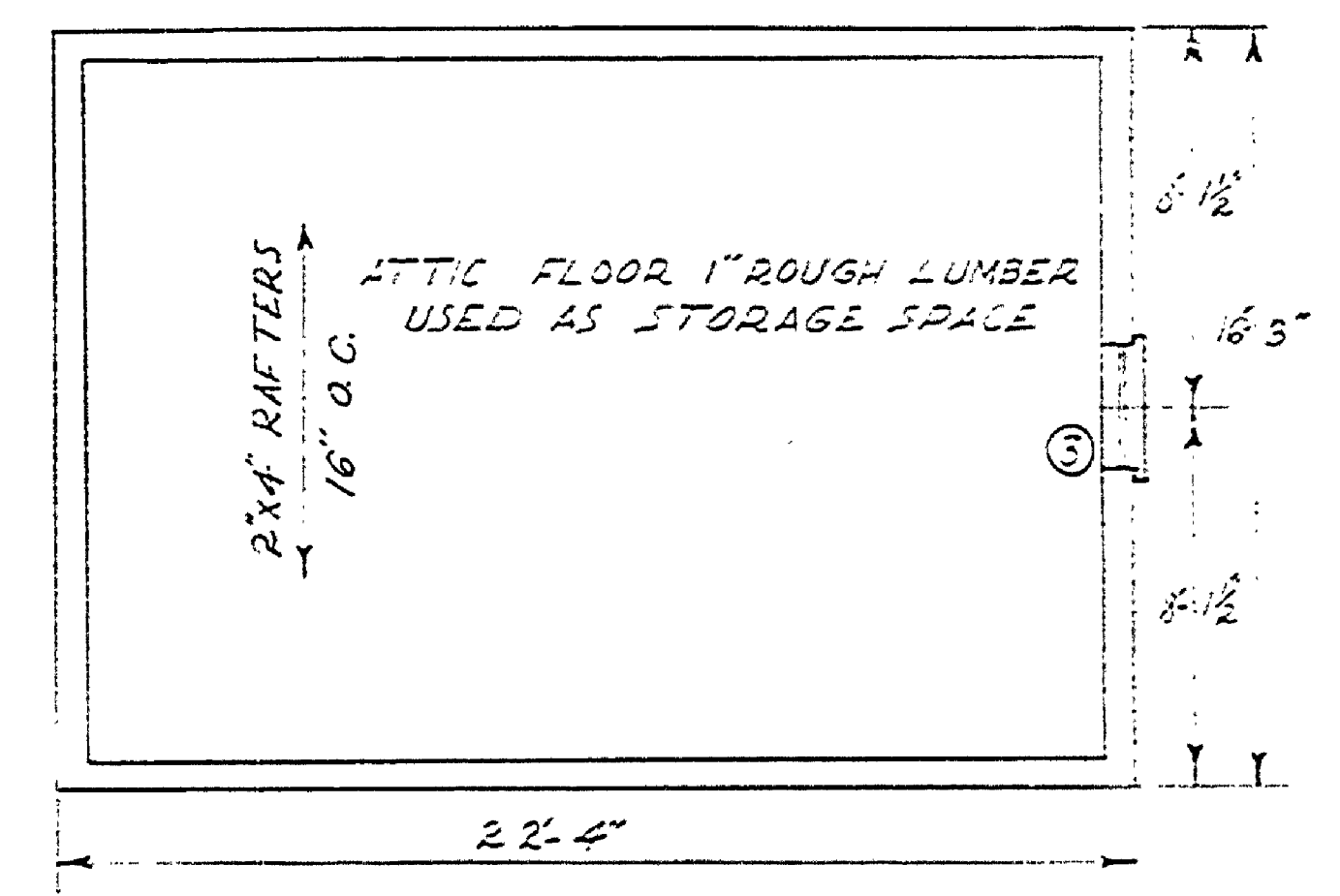


FIRST FLOOR PLAN

MK.	REQ'D	SIZE	GLASS	TRANS.	HARDWARE	TYPE	REMARKS
A	3	2'-6" x 6'-8"	NONE	NONE	STD.	PANEL	NONE
B	2	2'-4" x 6'-8"	"	"	"	"	"

MK.	REQ'D	SIZE	SASH	GLASS	TYPE	REMARKS
1	2	2'-8" x 1'-8"	2'-4" x 1'-4"	3/12 x 24"	FIXED	BASEMENT
2	4	2'-7" x 5'-1"	2'-7" x 2'-6 3/4"	9 3/4" x 14"	D. H.	SPRING OT.
3	3	2'-4" x 4'-2 1/2"	2'-2" x 2'-0"	18/12 x 10"	"	"

SCALE 3/4" = 1'-0"



ATTIC PLAN (NO ACCESS)

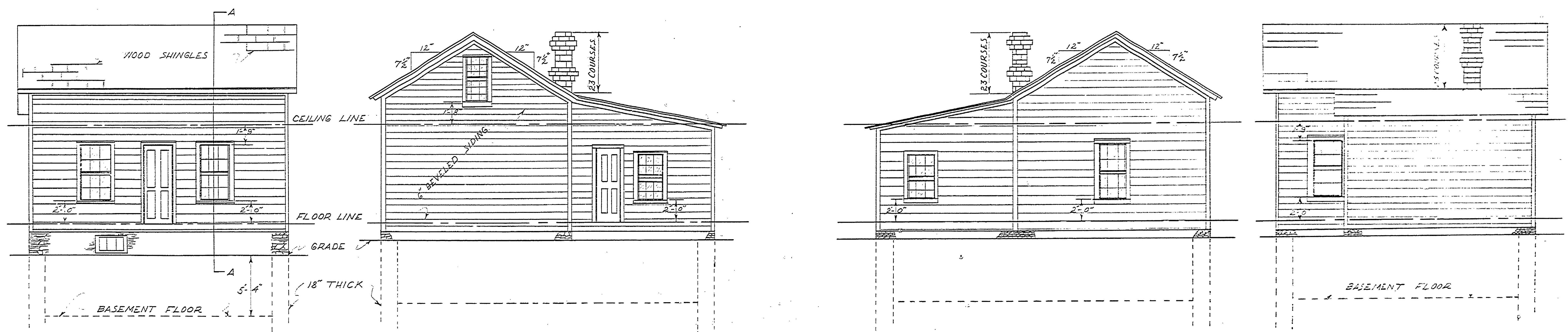
SPECIAL NOTE
 THIS STRUCTURE HAS BEEN DESTROYED OR MOVED SINCE THE 1907 SURVEY. FOUNDATION SHARDS EXIST AND LOCATION IS SHOWN ON THE 1955 MAP. DIMENSIONS AND EXTERIOR DETAIL WERE ARRIVED AT THROUGH STUDY OF FOUNDATION SHARDS, PHOTOGRAPHS, SURVEY MAPS, AND OTHER DATA TO KEEP THEM AS AUTHENTIC AS POSSIBLE. THE INTERIOR PLAN AND DETAIL WAS ASSUMED, BUT, FOLLOW AS CLOSELY AS POSSIBLE THE TYPICAL LAYOUTS AND DETAILS OF EXISTING STRUCTURES OF ITS TYPE IN FAYETTE OR THE FAYETTE AREA.

EAST ELEVATION

SOUTH ELEVATION

NORTH ELEVATION

WEST ELEVATION



MICHIGAN
 DEPARTMENT OF CONSERVATION
 PARKS AND RECREATION DIVISION

CONCEPTUAL DRAWING
 FAYETTE HISTORICAL TOWNSITE
 FAYETTE STATE PARK

SHEET NO. 2 OF 2
 PLAN NO. 24