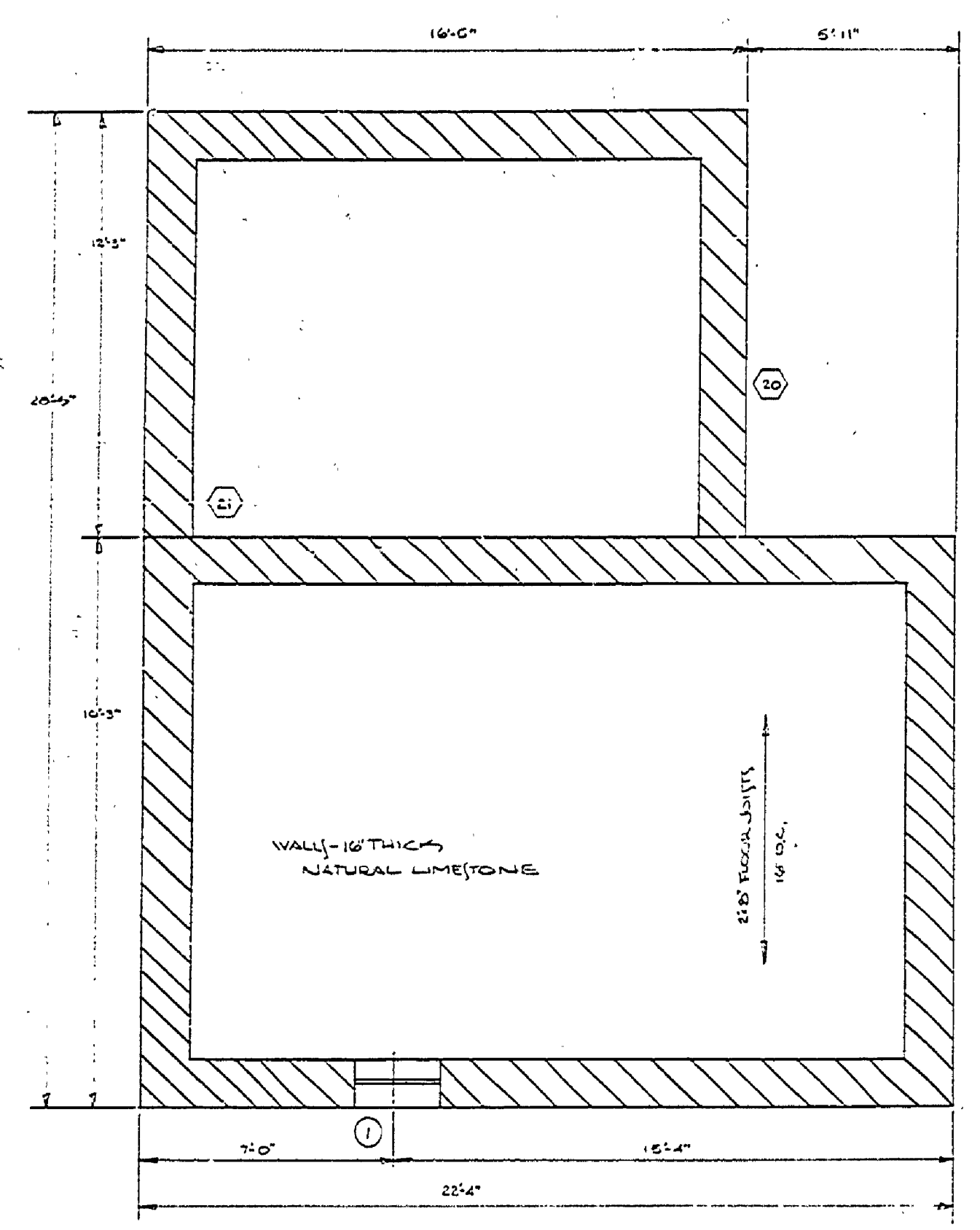
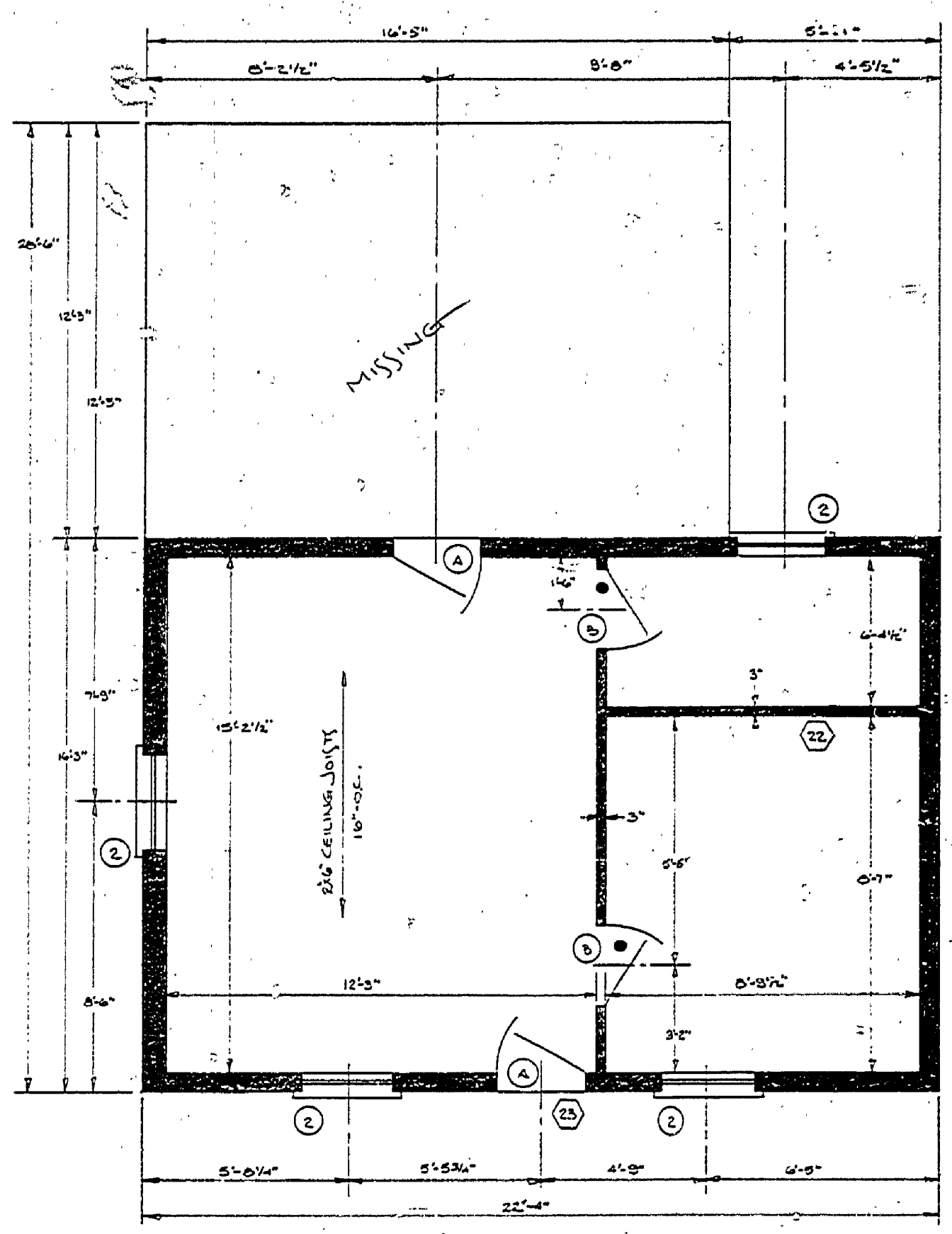


DESIGNED BY	DATE	REVIEWED	DATE	APPROVED	DATE	NO.	DATE	BY	REVISIONS	DATE	BY
DRAWN BY	12/10/02	ARCHITECTURAL				1			4		
CHECKED BY	12/12/02	ENGINEERING				2			5		
		LANDSCAPE				3			6		



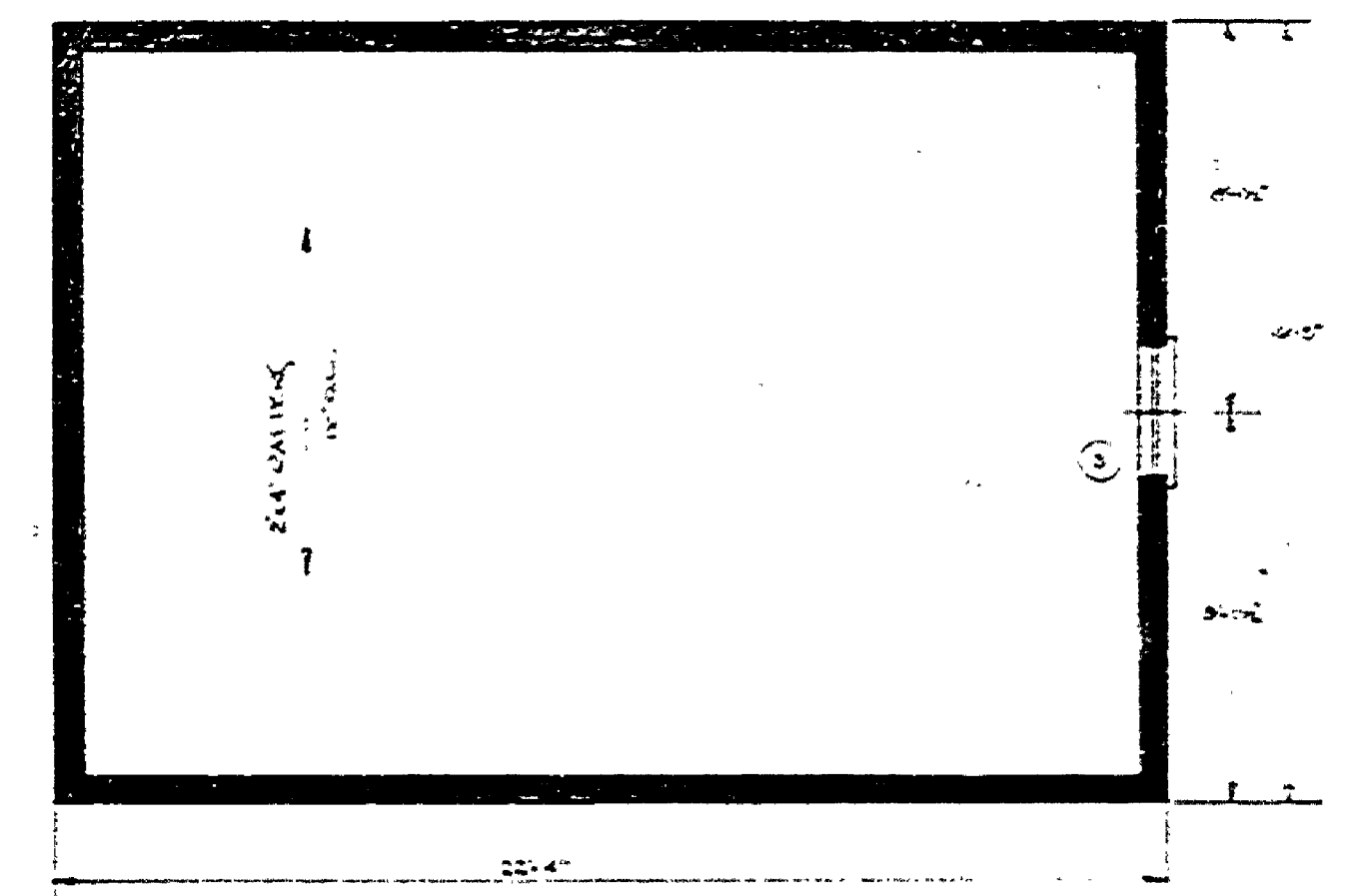
FOUNDATION PLAN



FLOOR PLAN

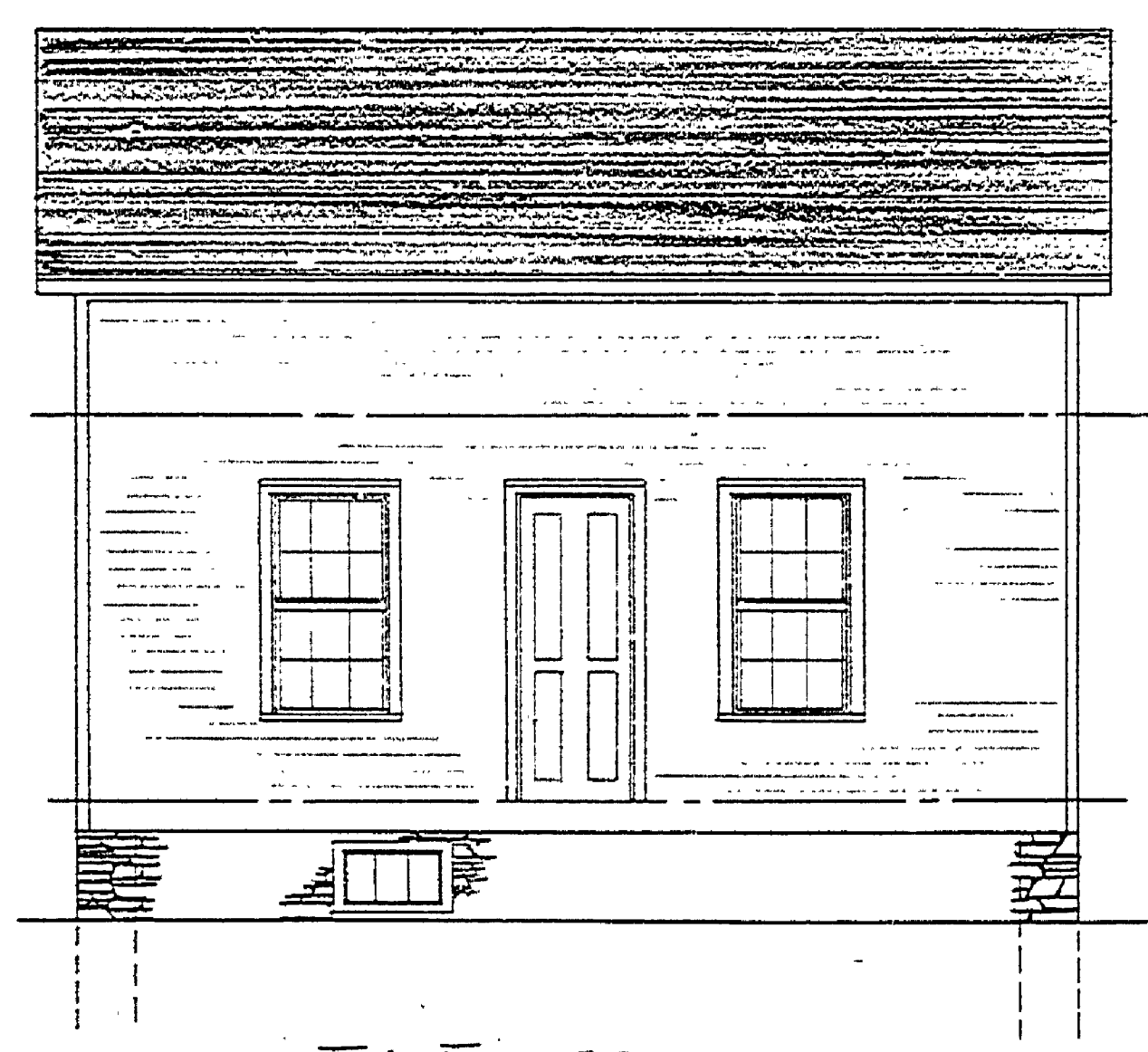
MK.	REQ'D.	SIZE	GLASS	TRANS.	HARDWARE	TYPE	REMARKS
A	2	2'6\"/>					

MK.	REQ'D.	SIZE	SASH	GLASS	TYPE	REMARKS
1	1	2'0\"/>				

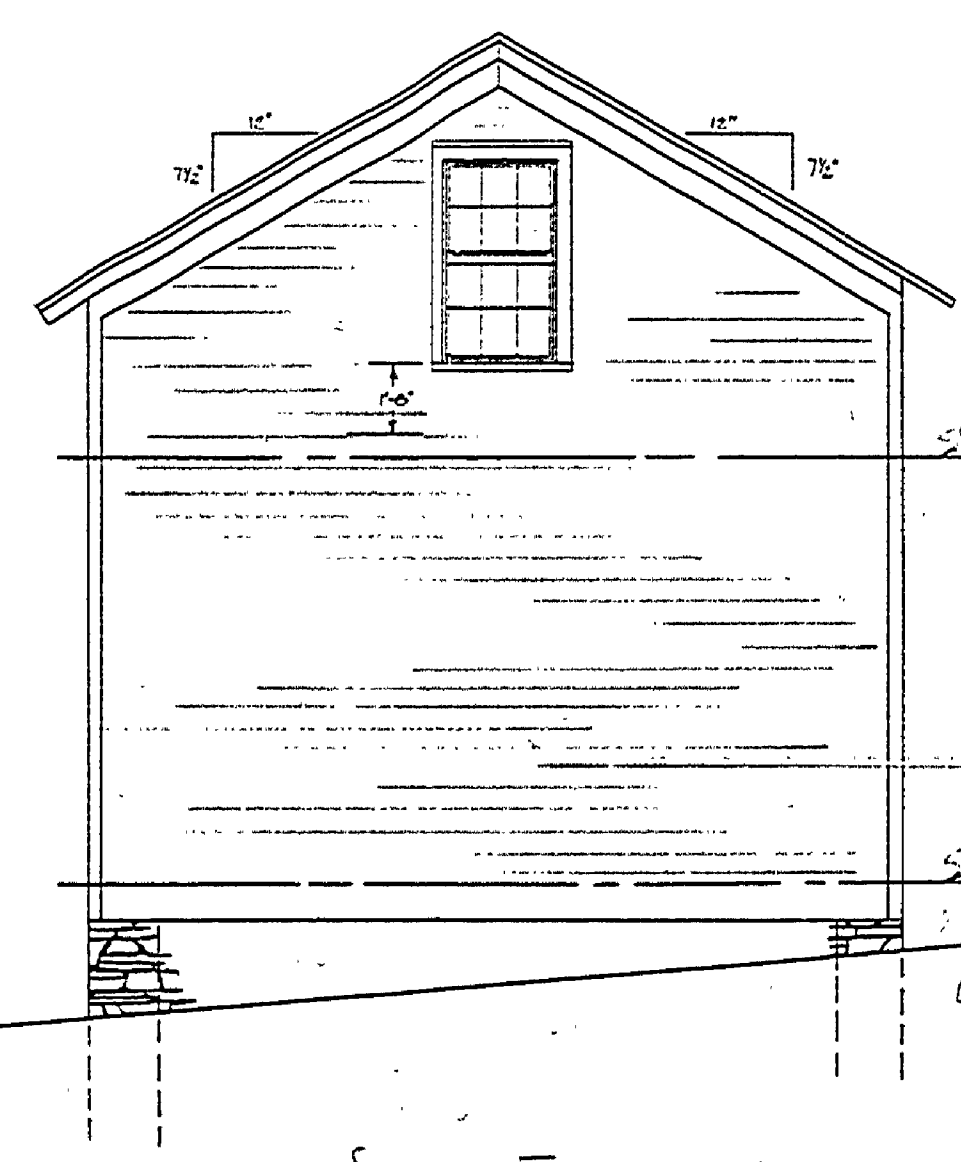


ATTIC PLAN - (NO ACCEL.)

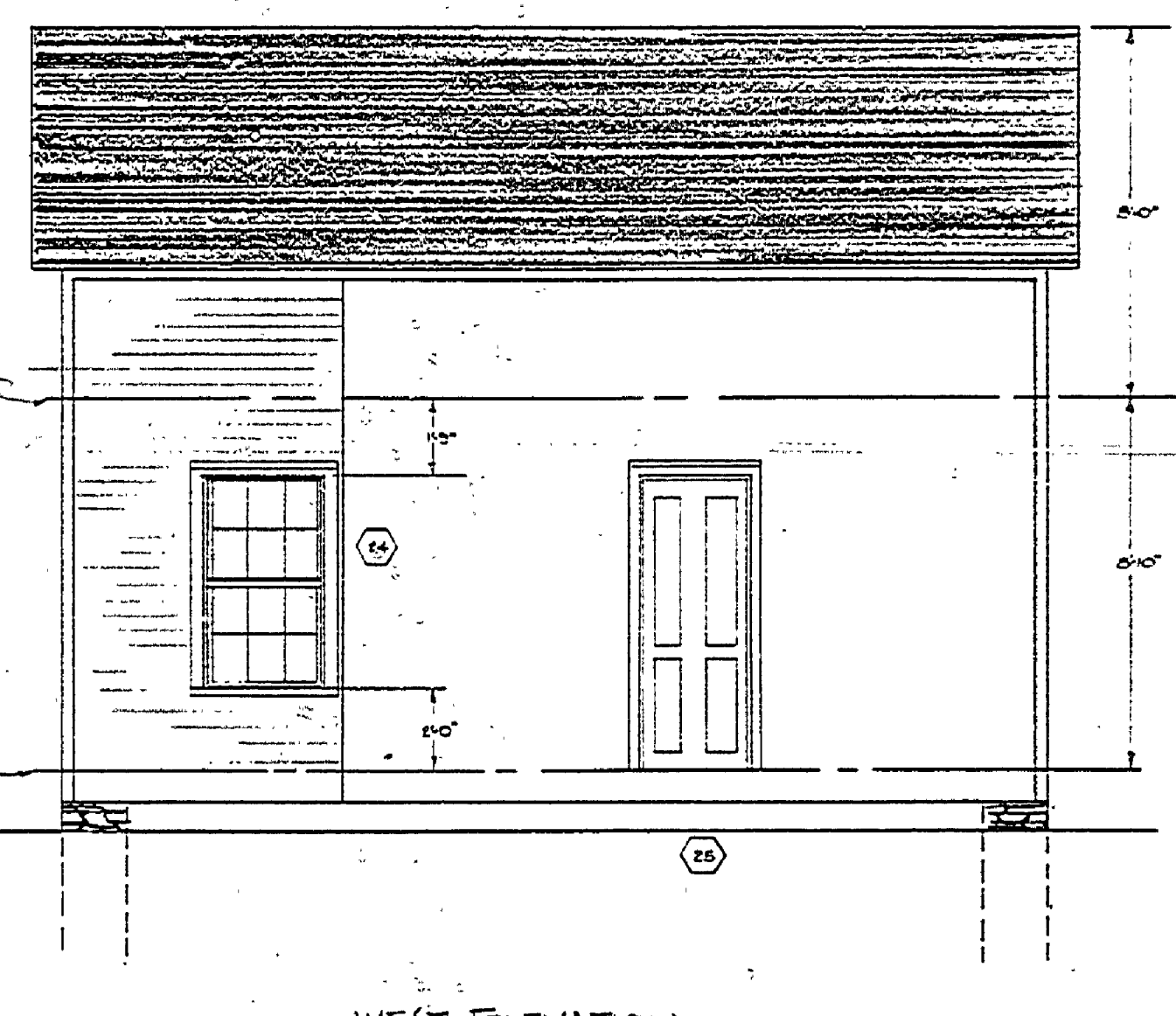
SCALE 1/4\"/>



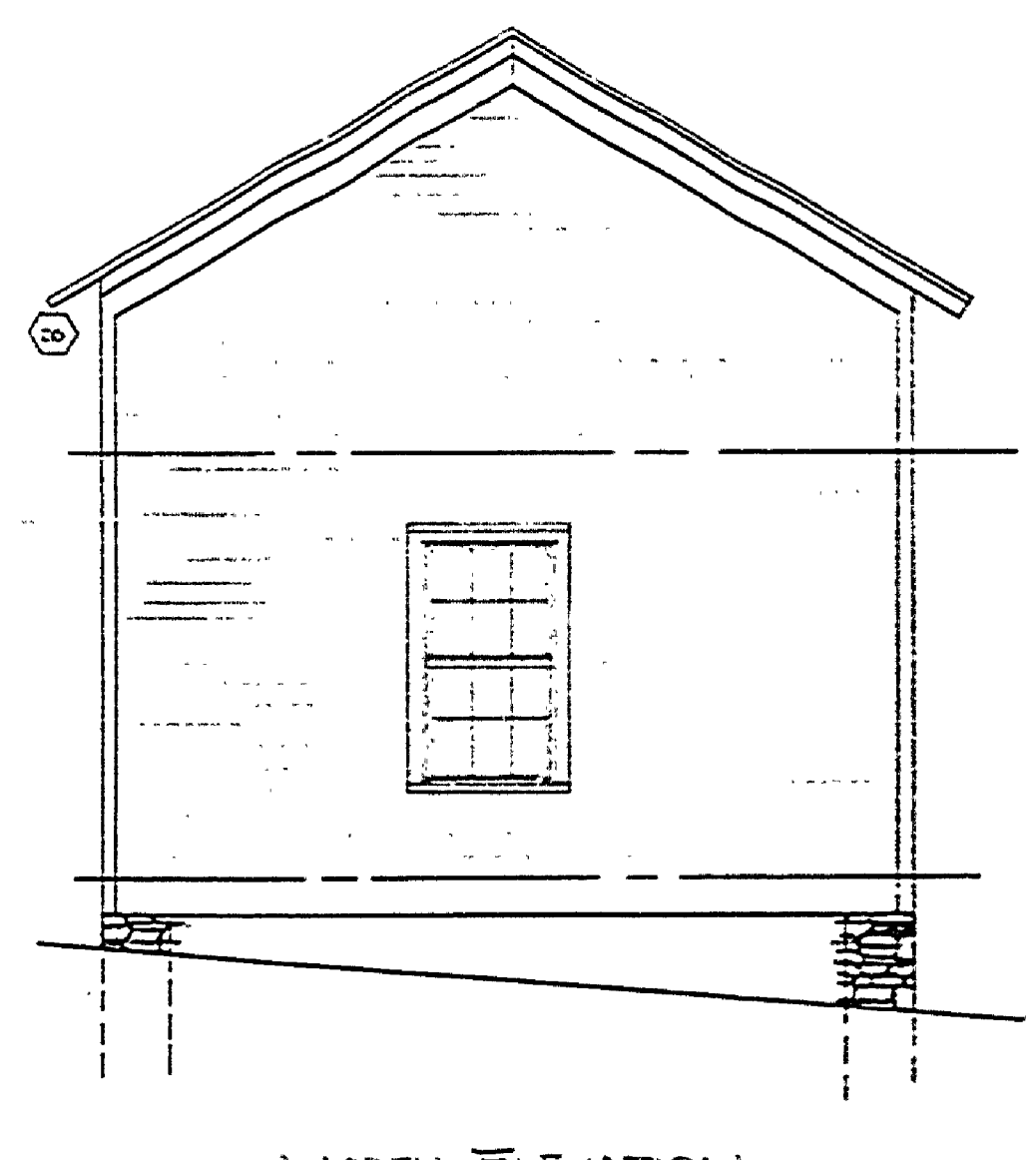
EAST ELEVATION



SOUTH ELEVATION



WEST ELEVATION



NORTH ELEVATION

- NOTES:
- 1. FOUNDATION REMAINS ONLY TO BE MAINTAINED AND REPAIRED AS NECESSARY.
 - 2. ALL EXISTING DOOR AND WINDOW LOCATIONS TO BE MAINTAINED.
 - 3. EXISTING CEILING AND TRUSS TO REMAIN.
 - 4. SMALL HOLE WITH FLOOR TO BE PATCHED.
 - 5. 6\"/>

GENERAL NOTE:
THIS HOUSE IS IN POOR AND NEEDS RECONSTRUCTION.
ORIGINAL FOUNDING WAS BOARDS AND BATTEN
DOOR MARKED - SEE MISSING.

BUILDING # 25

MICHIGAN
DEPARTMENT OF CONSERVATION
PARKS AND RECREATION DIVISION

MEASURED, DRAWING
FAYETTE HISTORICAL TOWNSITE
FAYETTE STATE PARK

SHEET
NO. 1
OF 1

PLAN NO.
A-25