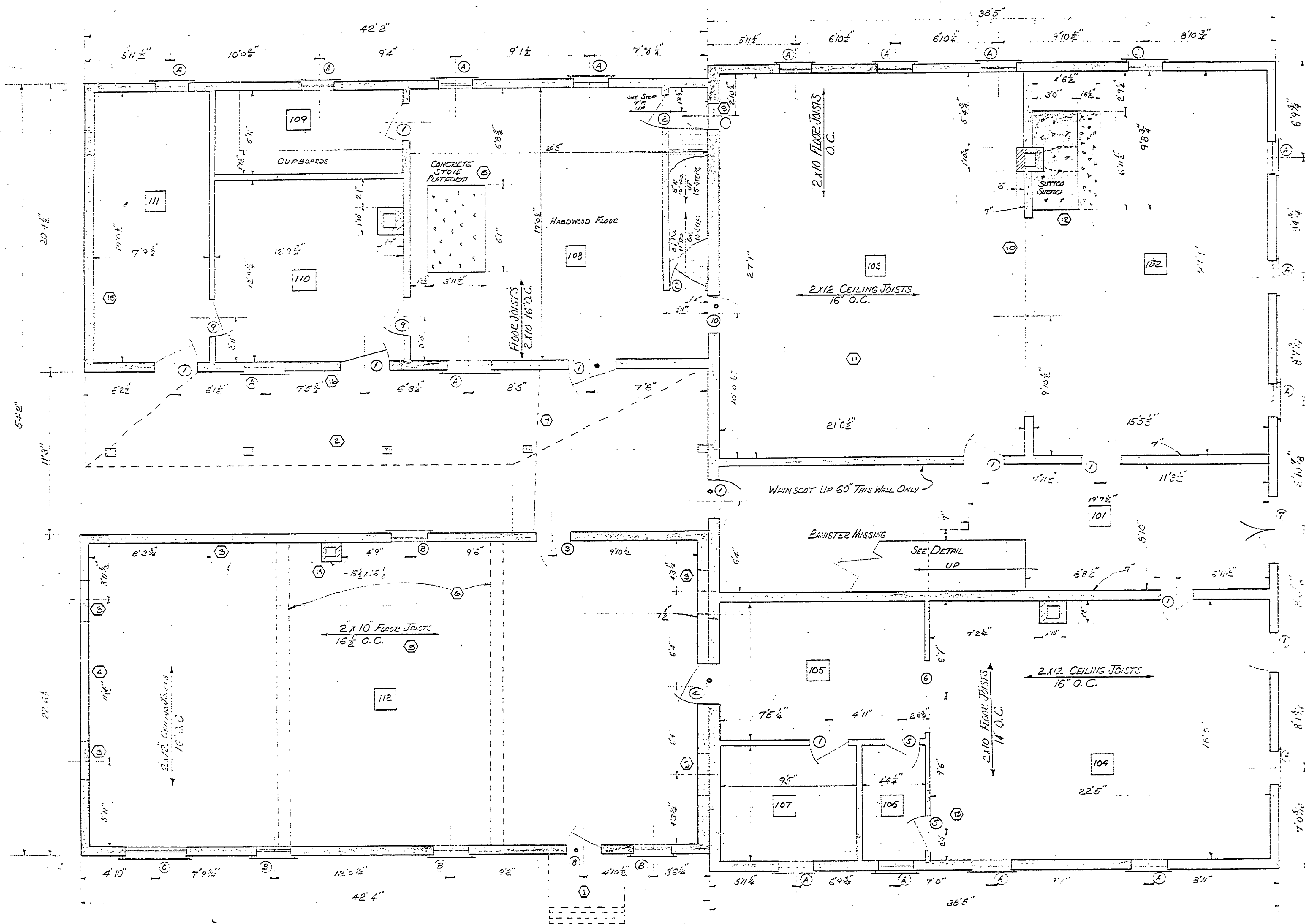


DESIGNED BY	ARCHITECTURAL	REVIEWED	DATE	APPROVED	DATE	NO.	DATE	BY	REVISIONS	DATE	BY
DRAWN BY	ENGINEERING					1			4		
CHECKED BY	LANDSCAPE					2			5		
						3			6		



1ST FLOOR PLAN SCALE 1/4" = 1'-0"

DOOR SCHEDULE						
MARK	QTY	SIZE	GLASS	TRANS.	HARDWARE	REMARKS
1	10	28" X 7'3"	NONE	NONE	TRANS. JACO	PANEL
2	2	24" X 6'8"	"	"	"	"
3	7	26" X 6'6"	9 1/2" TRANS.	31" X 29 1/2"	"	"
4	1	29 1/2" X 6'10"	NONE	NONE	"	"
5	2	24" X 7'2 1/2"	"	"	"	"
6		5'3" X 9'4"	"	"	RECHWAY	SEE DETAIL
7	1	2'3 1/2" X 7'6 1/2"	15" X 24" TRANS.	22" X 15 1/2"	"	DOUBLE SEE DETAIL
8	1	2'6" X 6'7"	NONE	NONE	CAS. B&Z	"
9	2	2'8" X 6'11"	"	"	"	"
10		2'6" X 7'0"	"	"	"	"

WINDOW SCHEDULE						
MARK	QTY	SIZE	GLASS	GLASS	TYPE	REMARKS
A	18	2'5 1/2" X 7'3"	2'4 1/2" X 7'3"	8' X 5 1/2"	DOUBLE HUNG	COUNTERBALANCE
B	4	2'8" X 5'10"	2'6 1/2" X 5'8"	6' X 1'8"	"	"
C	1	4'2" X 15'0"	4'0" X 14'0"	2'5" X 2'7"	FIXED	"

NOTE: ALL DOORS MARKED WITH "D" ARE MISSING. DO NOT REMOVE.  
 ALL EXTERIOR WALLS 8" THICK. ALL INTERIOR WALLS 5 1/2" THICK. UNLESS OTHERWISE NOTED.

ROOM FINISH SCHEDULE						
ROOM NO.	FINISH	WALLS	FLOOR	CEILING	TRIM	REMARKS
101	Paint	•	•	•	•	
102	Paint	•	•	•	•	
103	Paint	•	•	•	•	INTERIOR FINISHING REQUIRED
104	Paint	•	•	•	•	
105	Paint	•	•	•	•	
106	Paint	•	•	•	•	
107	Paint	•	•	•	•	
108	Paint	•	•	•	•	
109	Paint	•	•	•	•	
110	Paint	•	•	•	•	
111	Paint	•	•	•	•	
112	Paint	•	•	•	•	ALL FINISHING TO BE REMOVED

THE COMPLETE INTERIOR OF AREA 112 HAS BEEN SUITED.