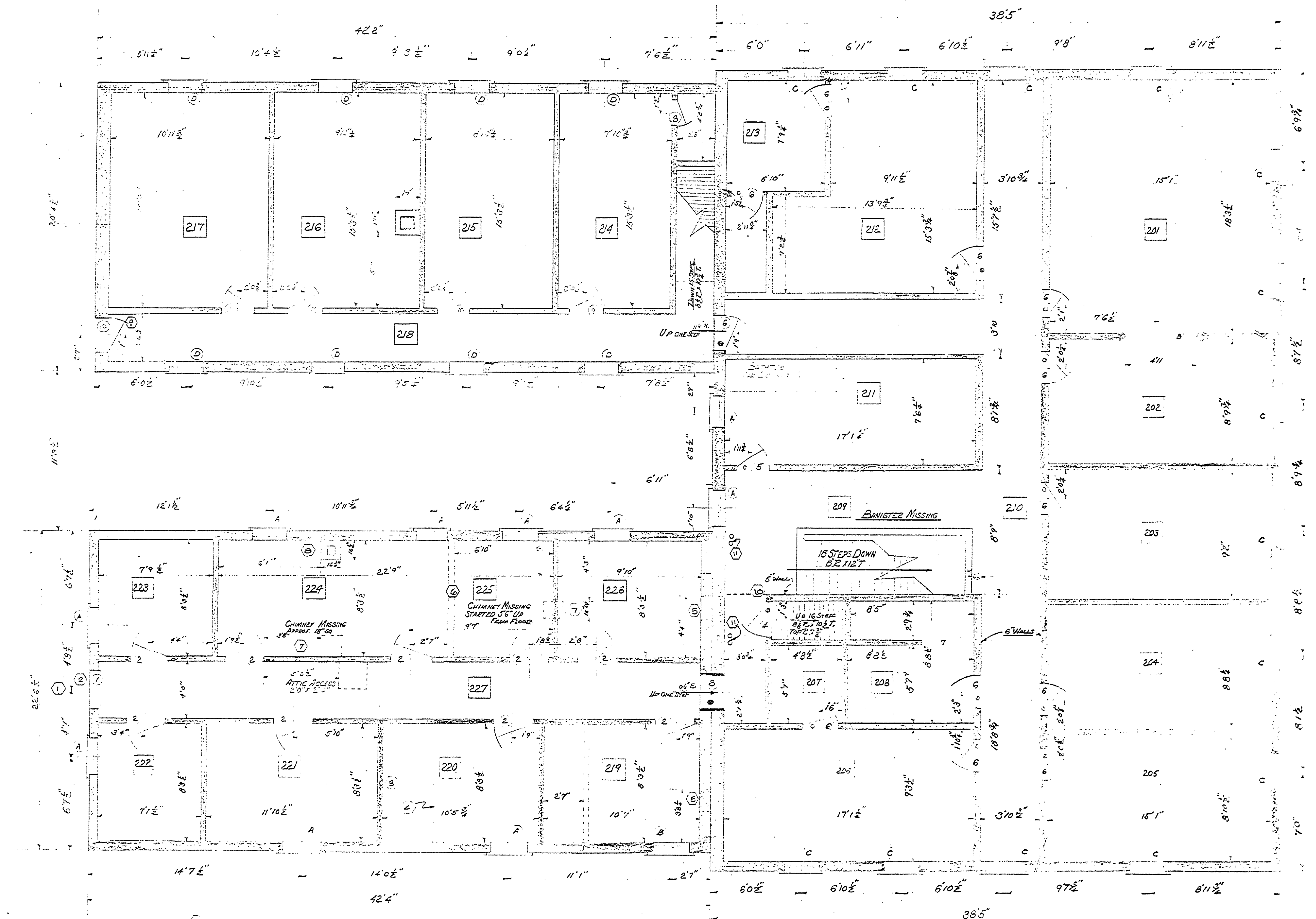


DESIGNED BY <i>John Lammert</i>	REVIEWED ARCHITECTURAL	APPROVED	NO. 1	DATE	REVISIONS	DATE BY
DRAWN BY <i>John Lammert</i>	ENGINEERING		2		4	
CHECKED BY	LANDSCAPE		3		5	
					6	



SECOND FLOOR PLAN

MARK	REQ'D	SIZE	GLASS	FRAME	HARDWARE	TYPE	REMARKS
1	1	31 1/2 x 79 1/2	None	1/2"	1/2"	FLY IN - PANEL	DOOR MISSING
2	1	32 1/2 x 80	"	"	"	"	"
3	1	35 1/2 x 80	"	1/2"	"	"	DOOR MISSING
4	1	31 1/2 x 77	"	"	"	"	NEEDS REPAIR
5	1	27 1/2 x 79 1/2	"	1/2"	"	"	DOOR MISSING
6	12	24 x 36	"	1/2"	"	"	ALL MISSING OR DAMAGED
7	1	35 1/2 x 80	"	"	"	"	REPAIR
8	1	41" WIDE	"	"	"	"	SEE DETAILS
9	1	27 1/2 x 79	1/2"	1/2"	"	"	"
10	4	27 1/2 x 79 1/2	"	1/2"	"	"	"

NOTES ON DOORS
 ALL DOORS MARKED WITH A DOT (•) ARE MISSING OR NEED MAJOR REPAIRS
 MARK 1 DOOR TENSION SASH SIZE 31 1/2 X 79 1/2, TENSION WAS REMOVED BUT STILL EXIST.
 MARK 5 DOOR TENSION SASH SIZE 27 1/2 X 79 1/2, GLASS SELF 9 X 7 1/2 3 PANELED.
 MARK 9 DOOR TENSION SASH SIZE 27 1/2 X 79 1/2, GLASS SIZE 9 X 7 1/2.

MARK	REQ'D	SIZE	SASH	GLASS	TYPE	REMARKS
A	10	54 1/2 x 113 1/2	31 1/2 x 29 1/2	1/2"	D.H.	"
B	1	55 1/2 x 113 1/2	31 1/2 x 29 1/2	1/2"	D.H.	"
C	12	51 1/2 x 113 1/2	25 1/2 x 29 1/2	1/2"	D.H.	"
D	9	61 1/2 x 122 1/2	32 1/2 x 33	1/2"	D.H.	"

NOTE
 INTERIOR WALL S.E.T. - EXTERIOR WALL S. WALL, UNLESS OTHERWISE NOTED.

ROOM	WALL	CEILING	FLOOR	TRIM	REMARKS
201	PAPER HANGED	PAPER HANGED	WOOD	"	"
202	"	"	"	"	"
203	"	"	"	"	"
204	"	"	"	"	"
205	"	"	"	"	"
206	"	"	"	"	"
207	"	"	"	"	"
208	"	"	"	"	"
209	"	"	"	"	"
210	"	"	"	"	"
211	"	"	"	"	"
212	"	"	"	"	"
213	"	"	"	"	"
214	"	"	"	"	"
215	"	"	"	"	"
216	"	"	"	"	"
217	"	"	"	"	"
218	"	"	"	"	"
219	"	"	"	"	"
220	"	"	"	"	"
221	"	"	"	"	"
222	"	"	"	"	"
223	"	"	"	"	"
224	"	"	"	"	"
225	"	"	"	"	"
226	"	"	"	"	"
227	"	"	"	"	"