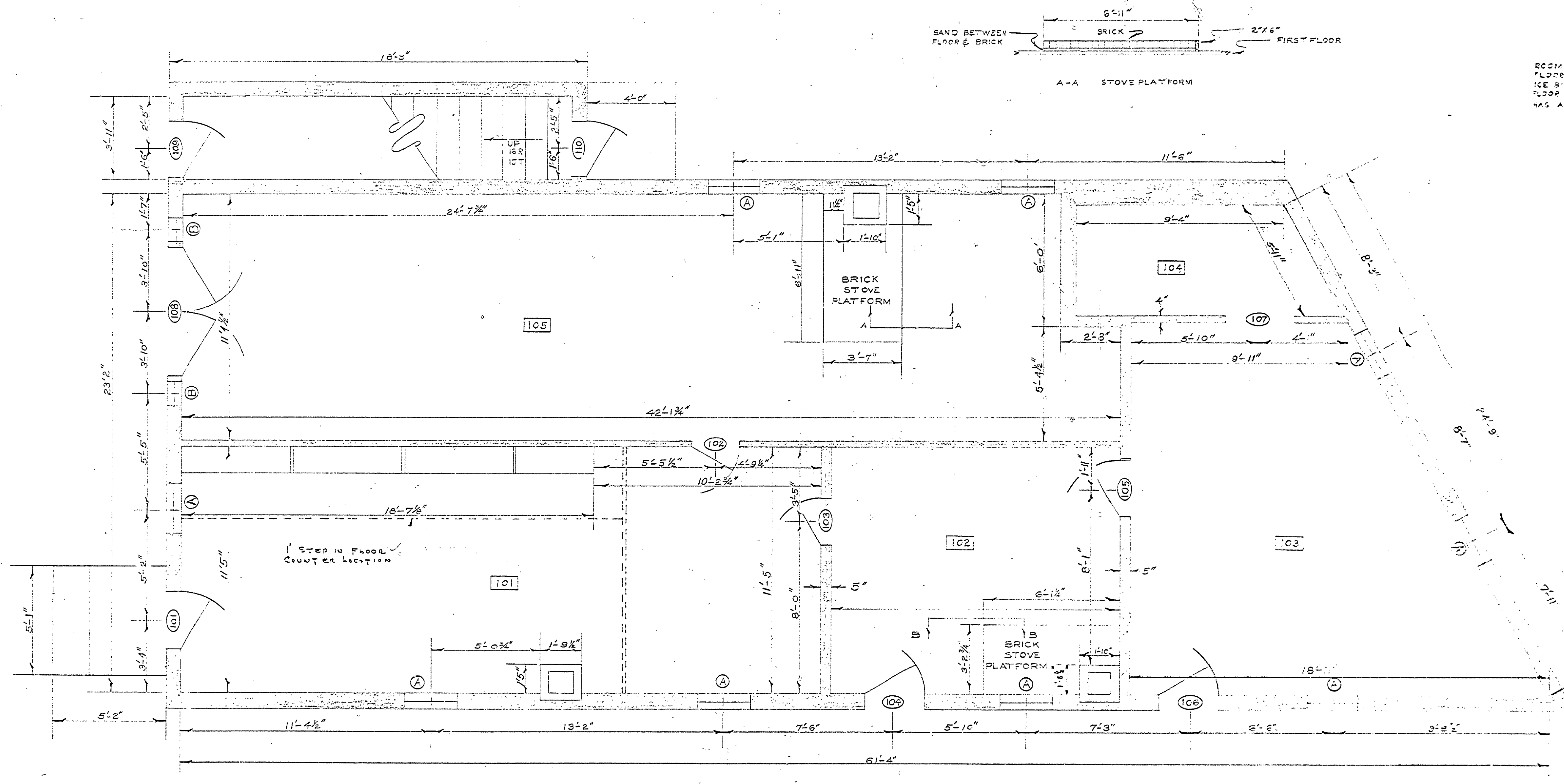


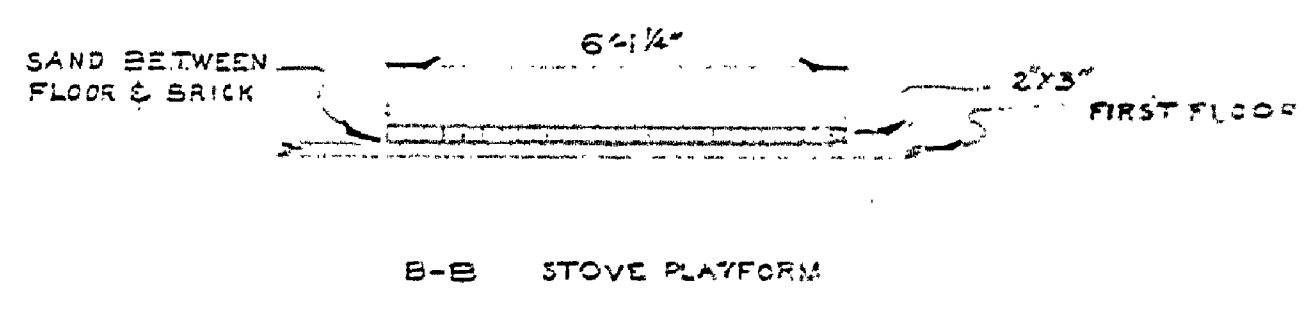
DESIGNED BY	DATE	REVIEWED	DATE	APPROVED	DATE	NO.	DATE	BY	REVISIONS	DATE	BY
W. N. G.	4-15-01	ARCHITECTURAL	4-17-01		1				4		
W. N. G.	4-15-01	ENGINEERING	4-22-01		2				5		
W. N. G.	4-15-01	LANDSCAPE	4-27-01		3	5-2-61			6		

WINDOW SCHEDULE							DOOR SCHEDULE							ROOM FINISH SCHEDULE				
MK	NO.	TYPE	SIZE	SASH	GLASS	REMARKS	MK	NO.	TYPE	GLASS	TRAN	HARDWARE	REMARKS	RM. NO.	FLOOR	WALL	CEILING	WOOD TRIM
A	9	DH	24" x 55 1/2"	20 3/4" x 31 1/2"	8' x 16"	COUNTER BALANCED	101	20 3/4" x 31 1/2"			NONE			101	○	○	○	○
B	2	FIXED	14 1/4" x 65 1/2"	14 1/4" x 65 1/2"	8' x 18"		102	24" x 8"						102	○	○	○	○
			20 1/4" x 15 3/4"			TRANSOM	103	24" x 7"						103	○	○	○	○
							104	24" x 7"						104	○	○	○	○
							105	24" x 7"						105	○	○	○	○
							106	24" x 8"						106	○	○	○	○
							107	24" x 7"						107	○	○	○	○
							108	30" x 70"				YES		108	○	○	○	○
							109	24" x 8"				NONE		109	○	○	○	○
							110	24" x 7"						110	○	○	○	○



FIRST FLOOR PLAN  
SCALE 1/8" = 1'-0"

NOTE  
ROOM 104 IS A HALLWAY  
FLOOR TO BE 1/2" x 2" x 4"  
ICE BIN UNDER  
FLOOR TO BE 1/2" x 2" x 4"  
HAS A METAL FLOOR OVER WOOD



MICHIGAN  
DEPARTMENT OF CONSERVATION  
PARKS AND RECREATION DIVISION

MEASURED DRAWINGS  
FAYETTE HISTORICAL TOWNSITE  
FAYETTE STATE PARK  
BUILDING NO. 101

SHEET  
NO. 2  
OF 3  
PLAN NO.  
A-101