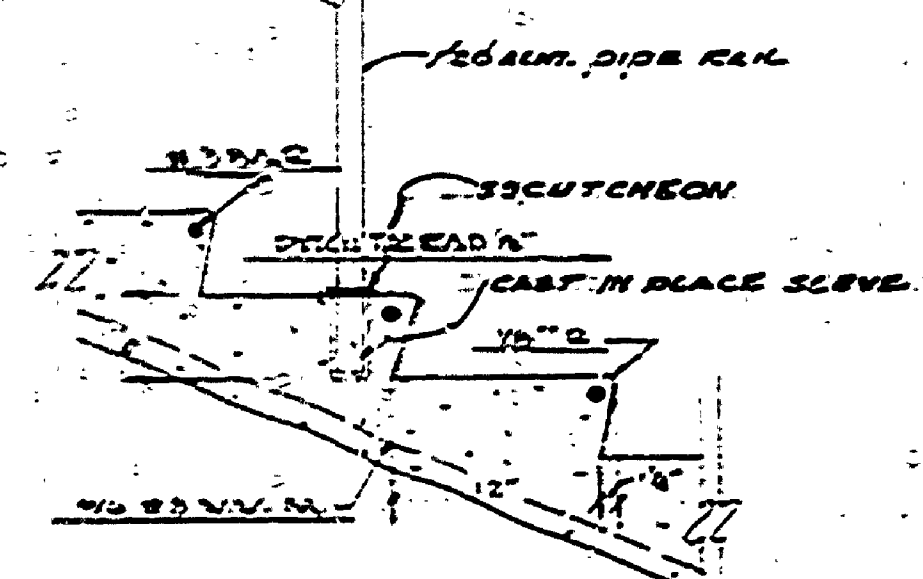
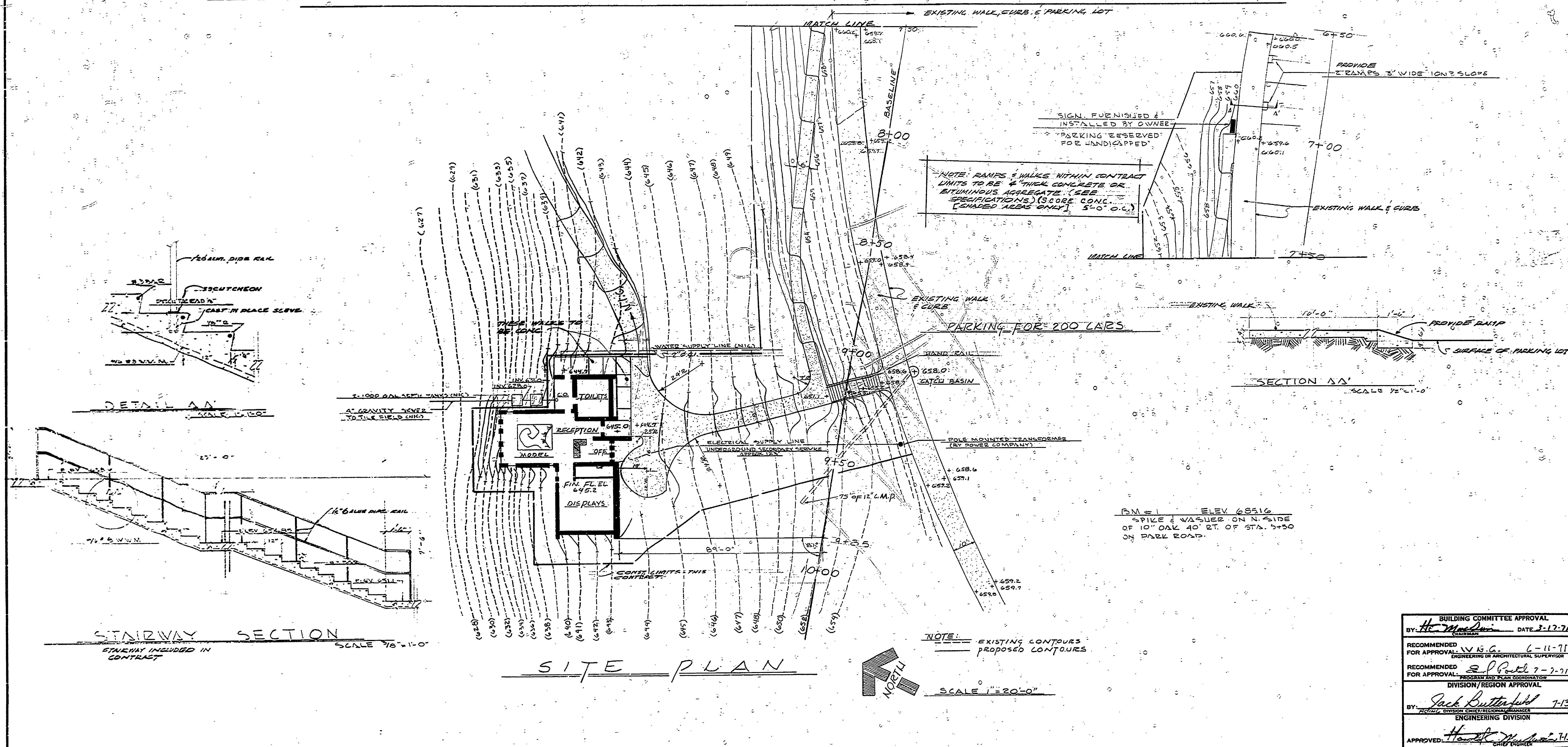
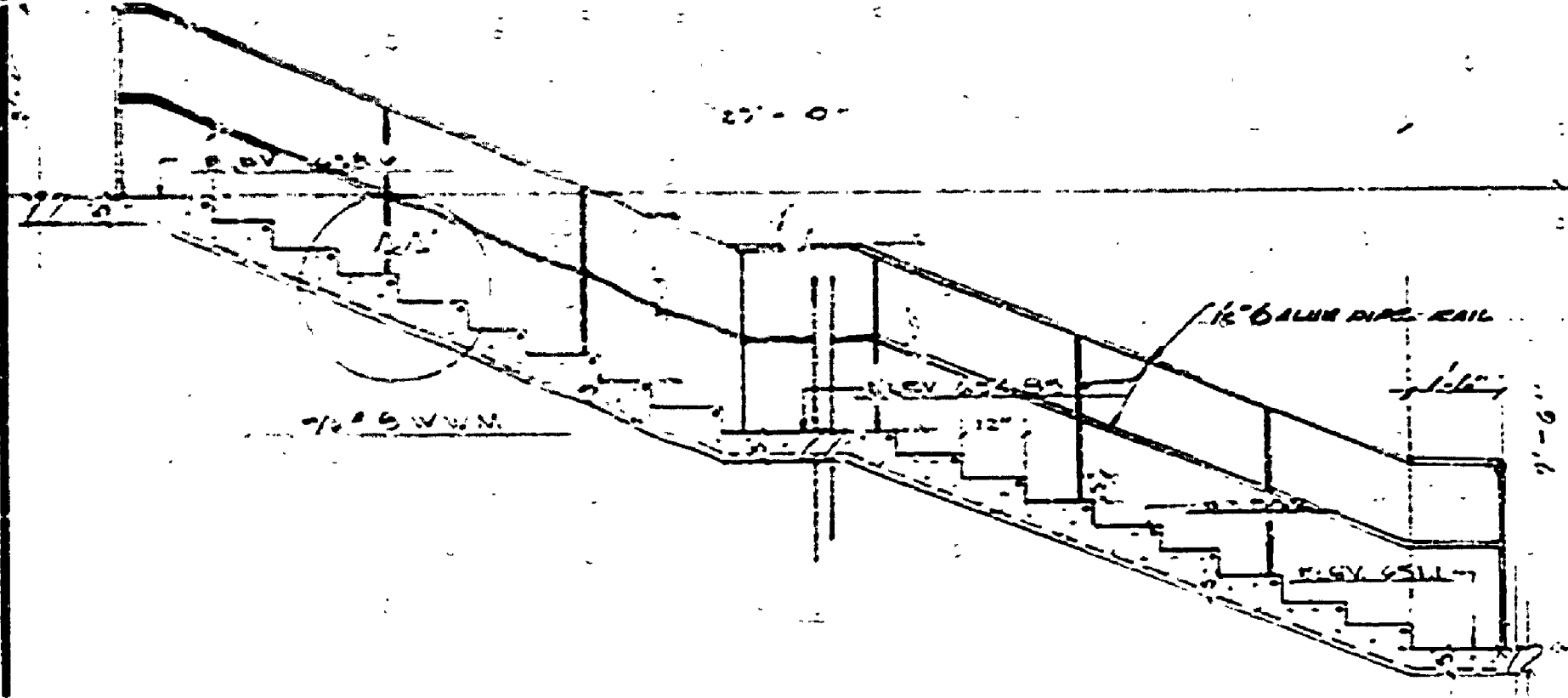


# FAVETTE STATE PARK

## VISITORS CENTER



DETAIL AA  
SCALE 1/4"=1'-0"



STAIRWAY SECTION  
SCALE 3/8"=1'-0"

NOTE: RAMPS & WALKS WITHIN CONTRACT LIMITS TO BE 4" THICK CONCRETE OR BITUMINOUS AGGREGATE (SEE SPECIFICATIONS) (3.0% CONC. [SHADED AREAS ONLY], 5% O.C.)

NOTE:   
 \_\_\_\_\_ EXISTING CONTOURS   
 \_\_\_\_\_ PROPOSED CONTOURS   
 SCALE 1"=20'-0"

BUILDING COMMITTEE APPROVAL	
BY: <i>H. W. ...</i>	DATE: 2-17-71
RECOMMENDED FOR APPROVAL: <i>V.S.G.</i> 6-11-71	
RECOMMENDED FOR APPROVAL: <i>S.P. ...</i> 7-7-71	
DIVISION/REGION APPROVAL	
BY: <i>Jack Butcher</i>	DATE: 7-13-71
APPROVED: <i>H. W. ...</i> 7-13-71	

SURVEYED BY	DRAWN BY <i>G. TOMPKINS</i>	NO. 1. DATE	BY	REVISIONS	NO. 3. DATE	BY	REVISIONS	MICHIGAN DEPARTMENT OF NATURAL RESOURCES	COVER SHEET	FAVETTE STATE PARK	PROJECT NO. 24-1068
DESIGNED BY	CHECKED BY	DATE	DATE	2.	DATE	DATE	4.	DEPARTMENT OF NATURAL RESOURCES	SHEET TITLE	AREA OR PARK	SHEET ONE OF 7
										VISITORS CENTER	PLAN NO. A-202-A