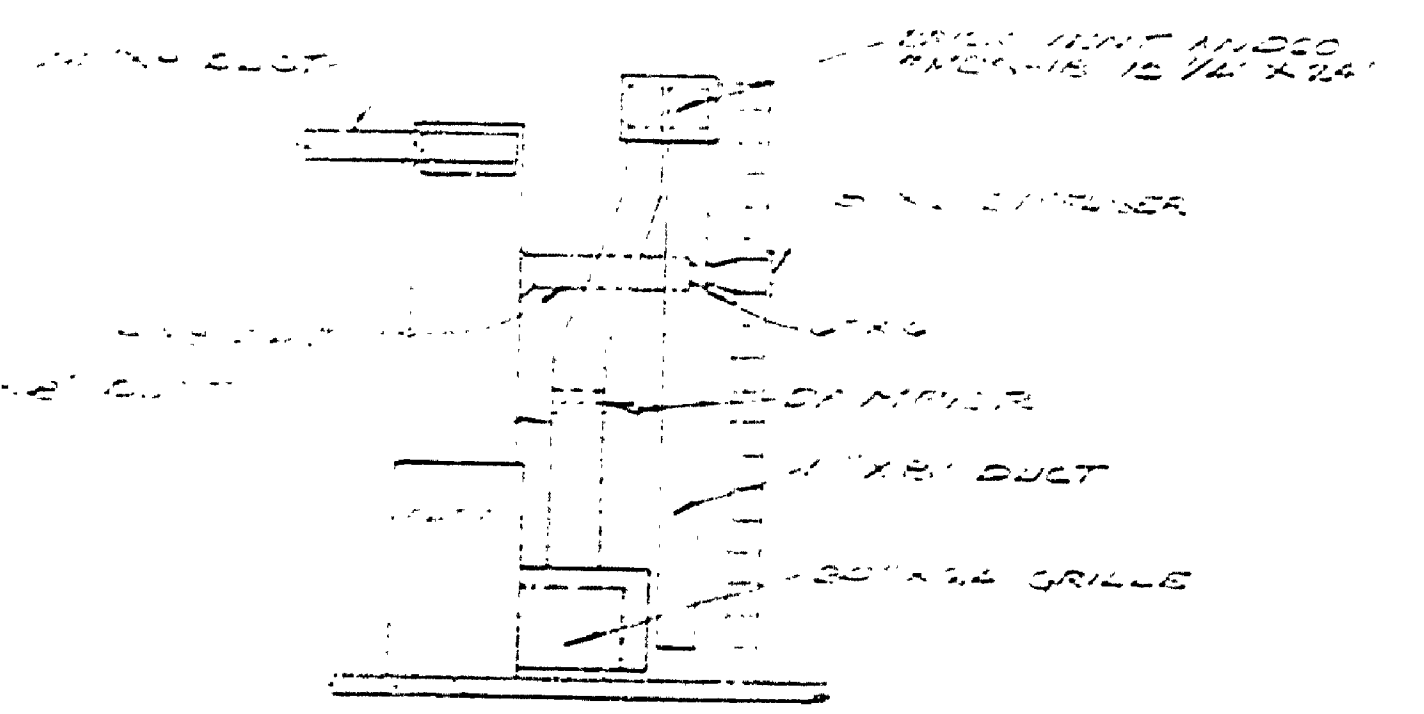
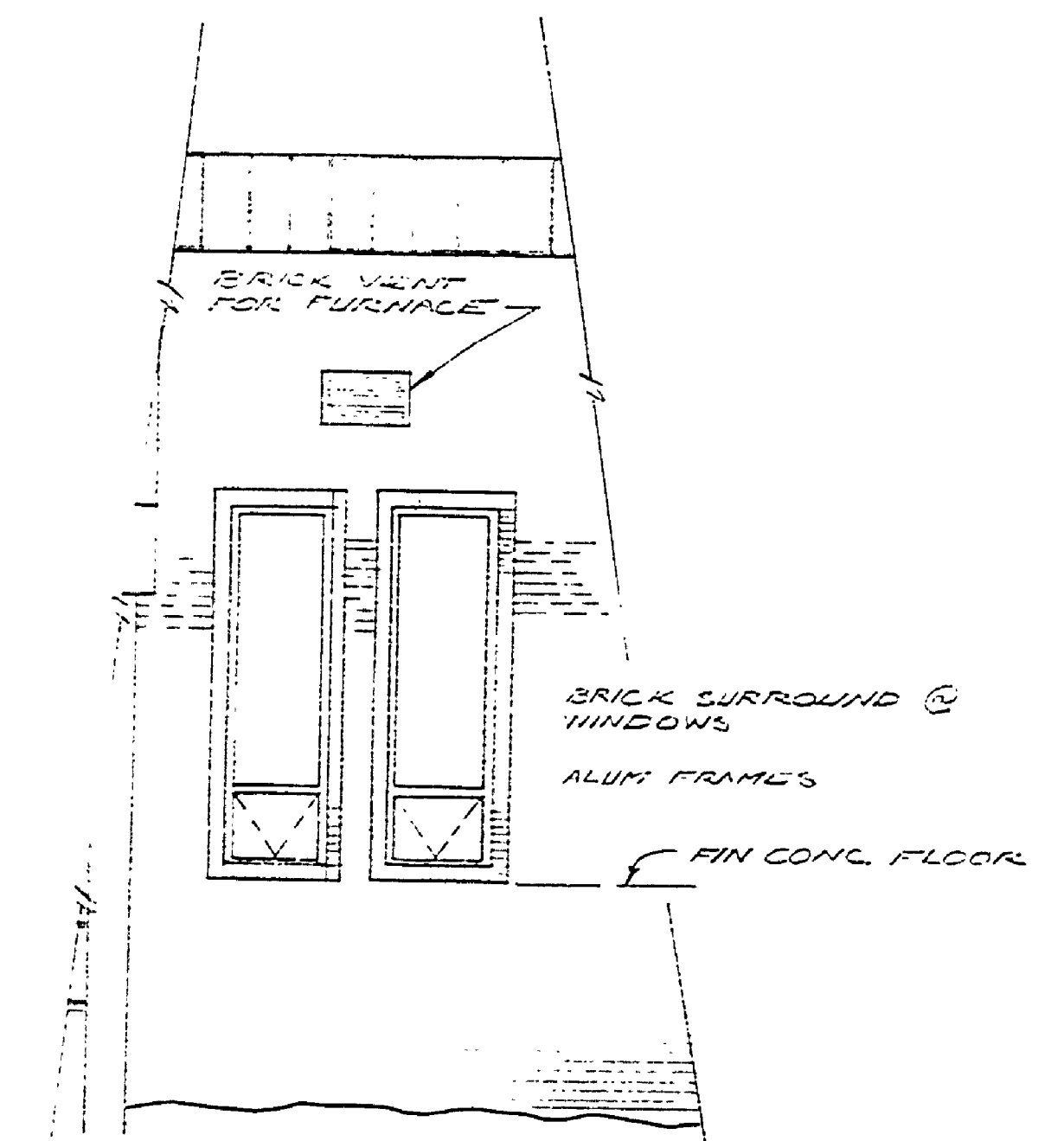


NOTES
 DOORS #4, #5, #6 TO HAVE WINTER COVERS FOR LOUVERS. COVERS TO BE PLYWOOD BACKED WITH 1" THICK STYROFOAM.
 CUT ACCESS PANEL INSIDE OF PIPE CHASE NEAR DOORS. INSIDE OF PIPE CHASE INSTALL SHUT-OFF VALVE & DRAIN COCK IN SUPPLY LINE FOR DRINKING FOUNTAIN. IF HOSE BIBB AT OPPOSITE END OF PIPE CHASE IS NOT FREEZE PROOF TYPE, IT WILL HAVE TO BE WRAPPED.

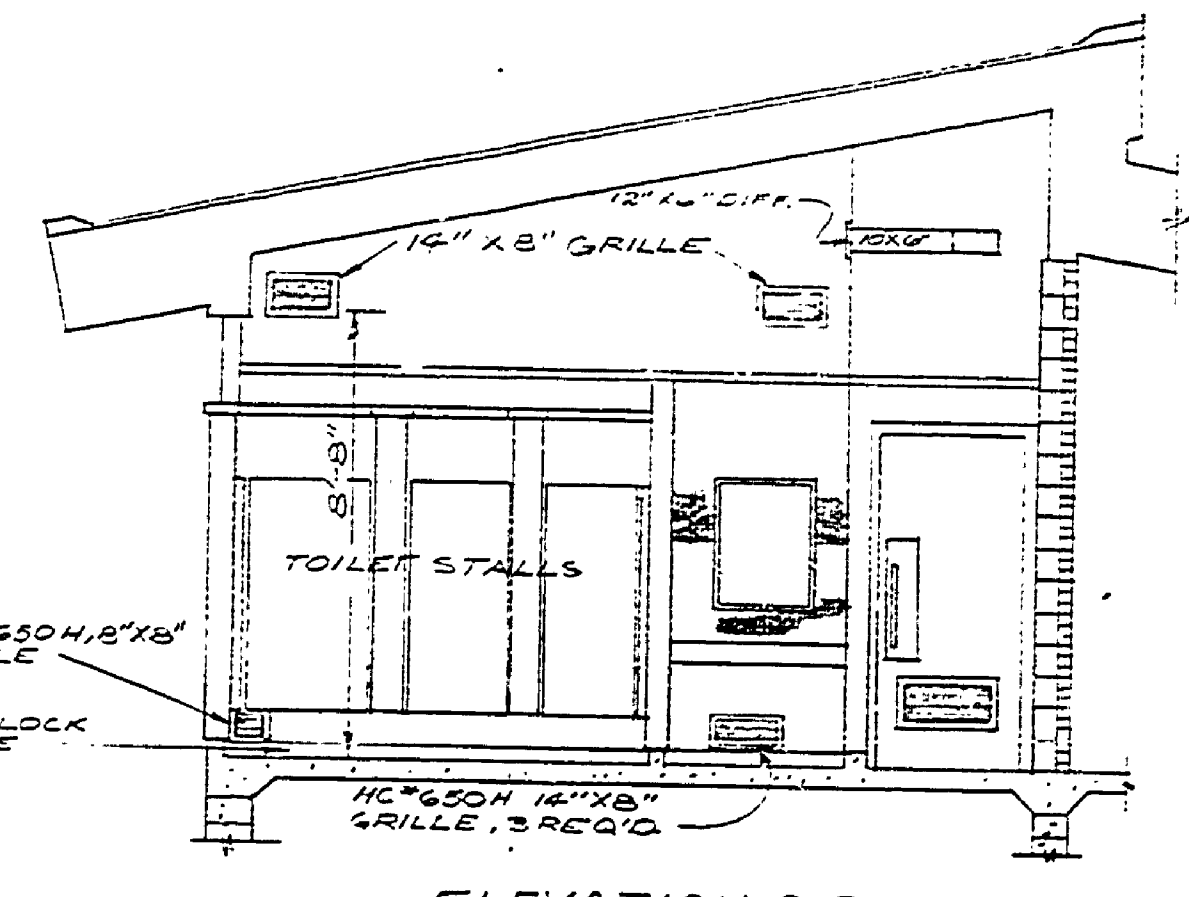
FURNACE
 LENNIX Q-11-1657, 132,000 BTU/HR. OUTPUT... L.P. GAS, 2000 CFM @ 0.460 S.P. 1HP BLOWER MOTOR--230V--17, LENNIX HUMIDIFIER 151-12 WITH HUMIDISTAT CONTROL.



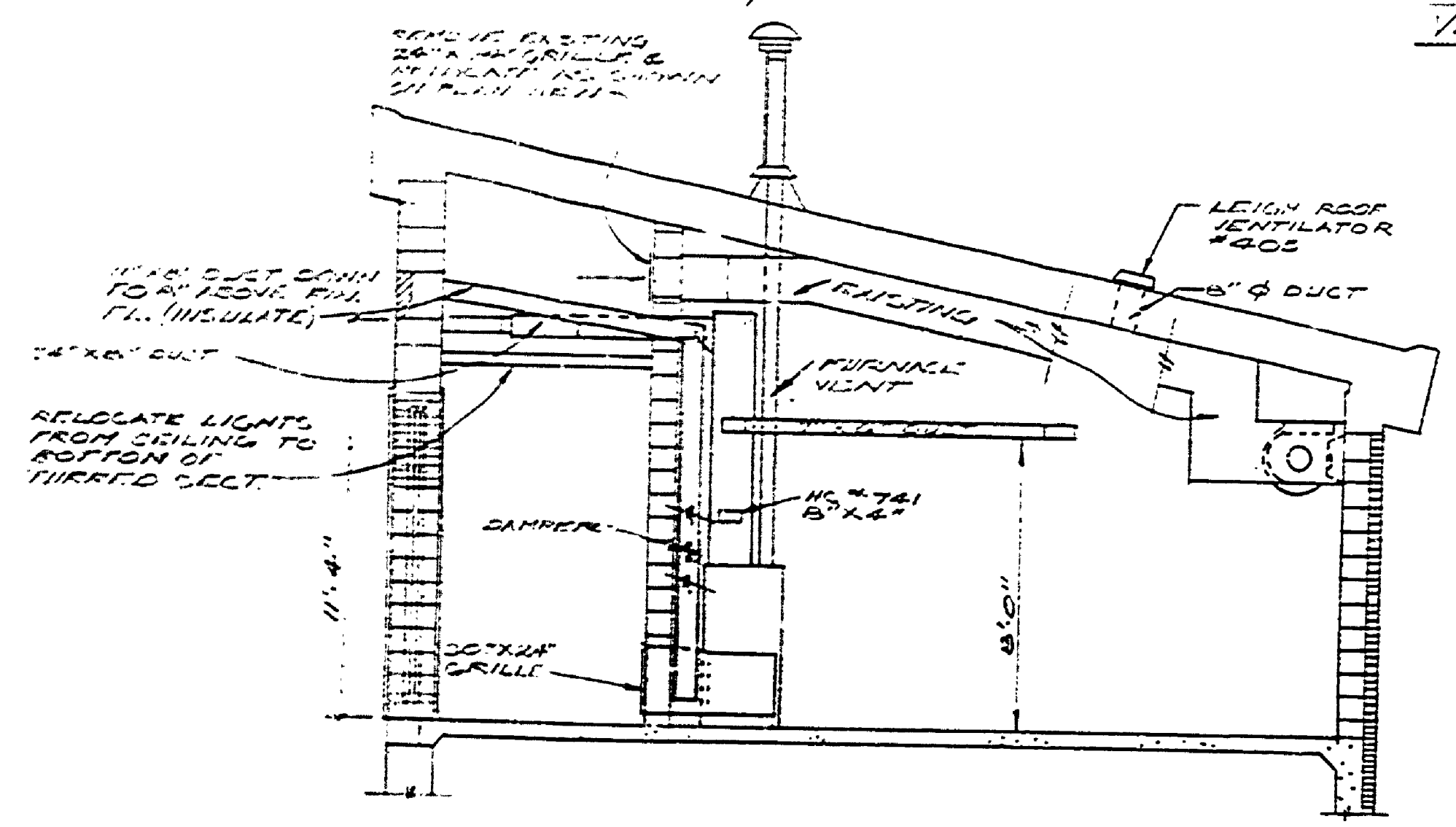
ELEVATION SHOWING ARRANGEMENT OF FURNACE, DUCTS & AIR INTAKES
 1/2" = 1'-0"



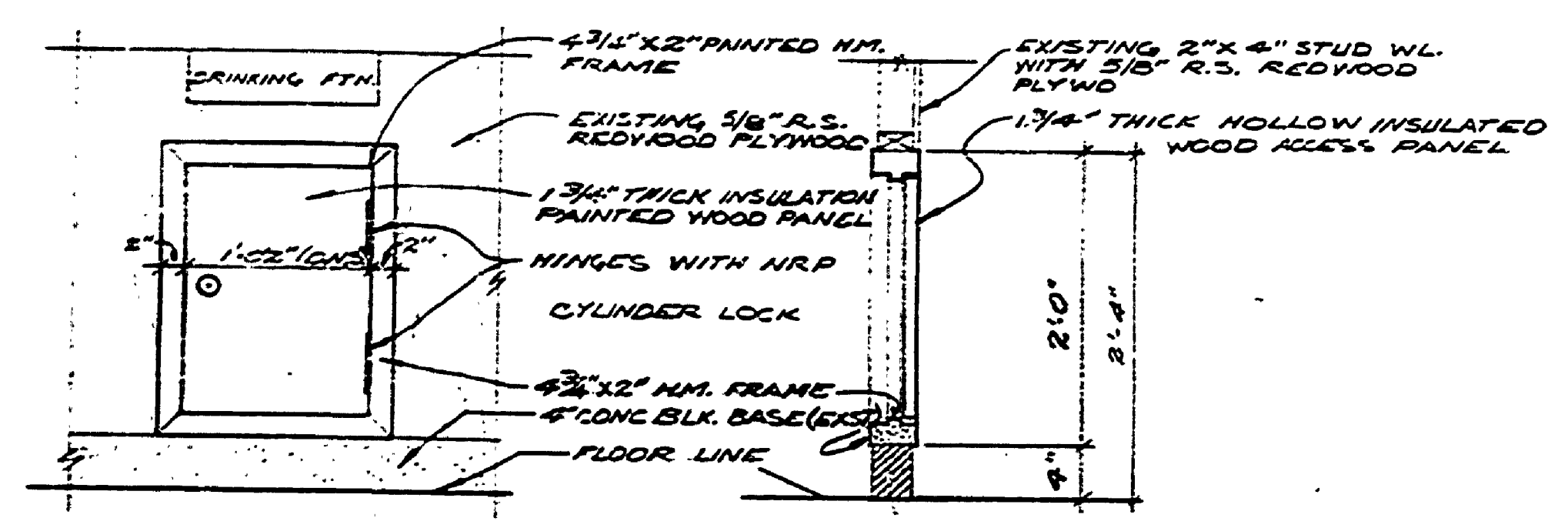
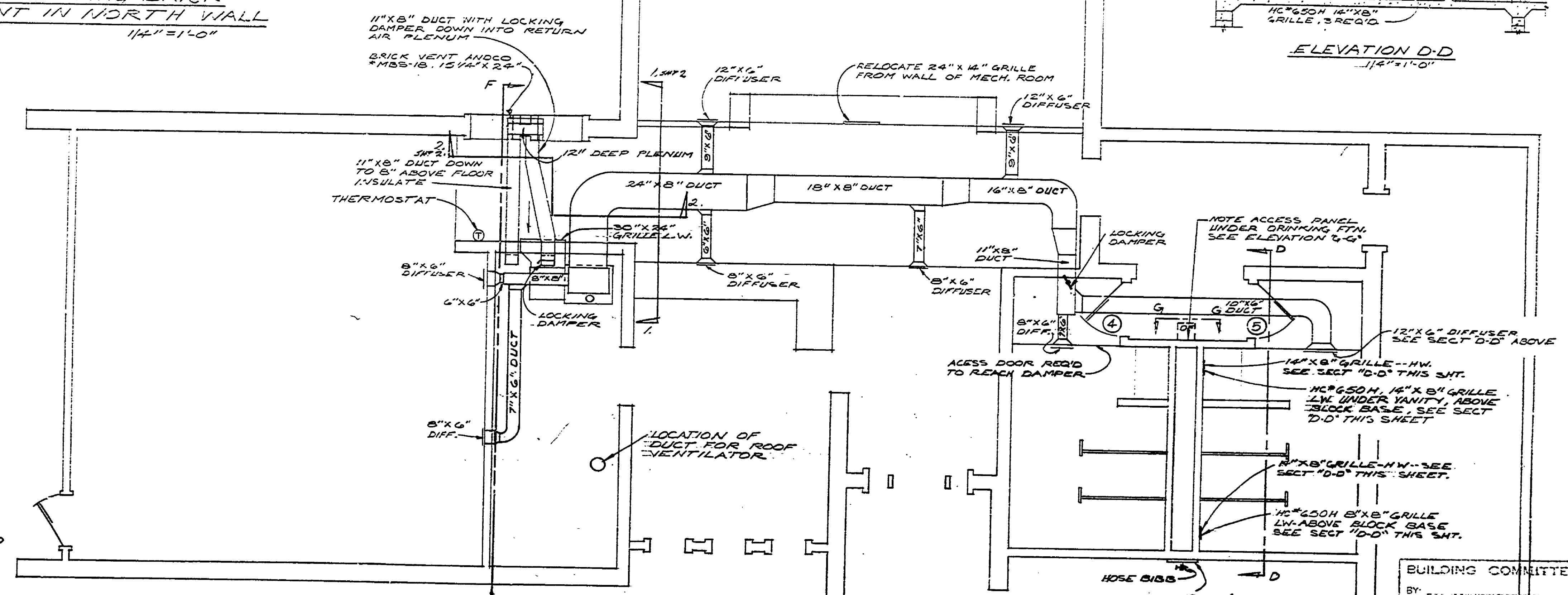
NEW SHOWING BRICK VENT IN NORTH WALL
 1/4" = 1'-0"



ELEVATION D-D
 1/2" = 1'-0"



ELEVATION F-F
 1/2" = 1'-0"



ELEVATION G-G SECTION
 ACCESS PANEL UNDER DRINKING FTN. TO PIPE CHASE
 1/2" = 1'-0"

BUILDING COMMITTEE APPROVAL

BY: _____ DATE: _____

DESIGN RECOMMENDED FOR APPROVAL: *John* 9/10/73

DESIGNER DATE

RECOMMENDED FOR APPROVAL: *Russell P. Hoberg* 9-25-73

PROGRAM & PLANNING CONSULTANT DATE

DIVISION APPROVAL

BY: *D. Schmitt* 9-25-73

DIVISION CHIEF DATE

MICHIGAN DEPARTMENT OF NATURAL RESOURCES

APPROVED: *H. M. ...* 9-26-73

CHIEF ENGINEER DATE

PLAN NO. PROJECT NUMBER SHEET OF

28-10-32 2 OF

SURVEYED BY	DESIGNED BY	DATE	DRAWN BY	CHECKED BY	DATE	NO.	DATE	BY	REVISIONS	NO.	DATE	BY	REVISIONS	MICHIGAN DEPARTMENT OF NATURAL RESOURCES	HEATING PLAN	AREA OR PARK	PROJECT NO.	SHEET OF
			S B			1.				3.						FAYETTE STATE PK.	24-1132	2 OF
						2.				4.						VISITORS CENTER	24-1132	1 OF 2