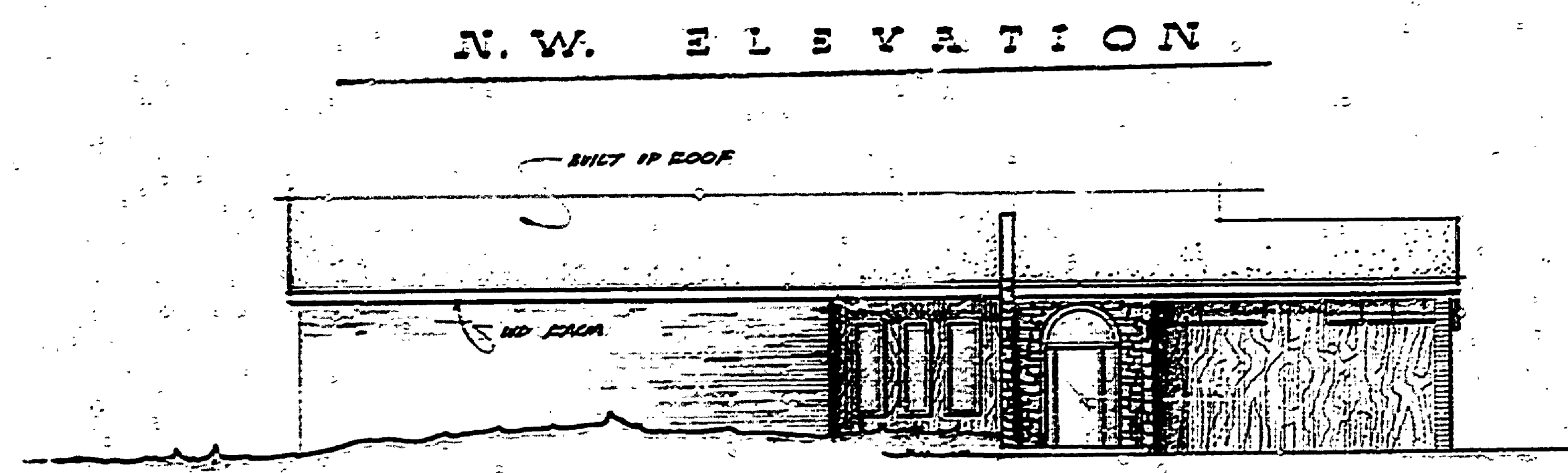
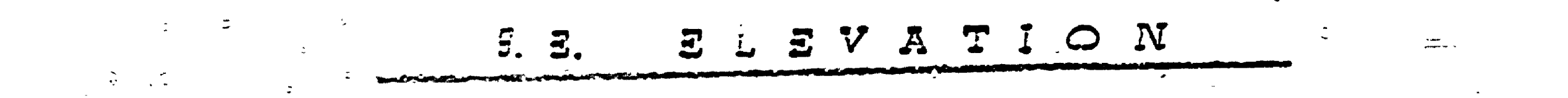


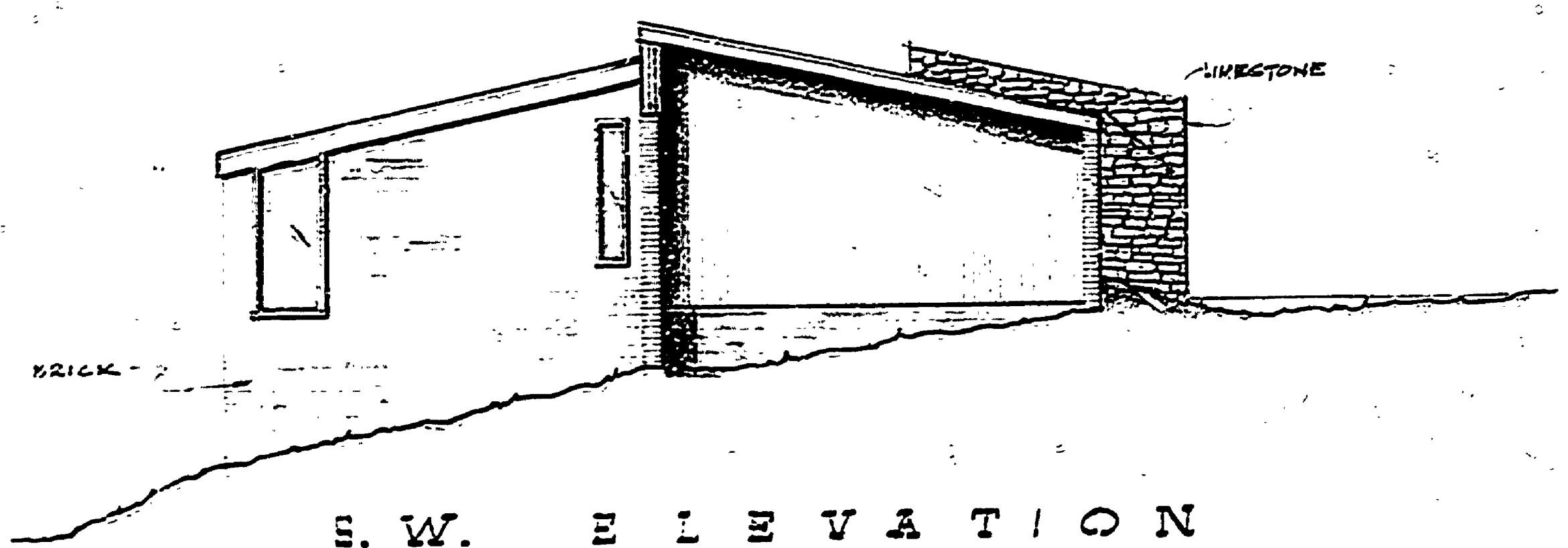
ELEVATION - SECTION



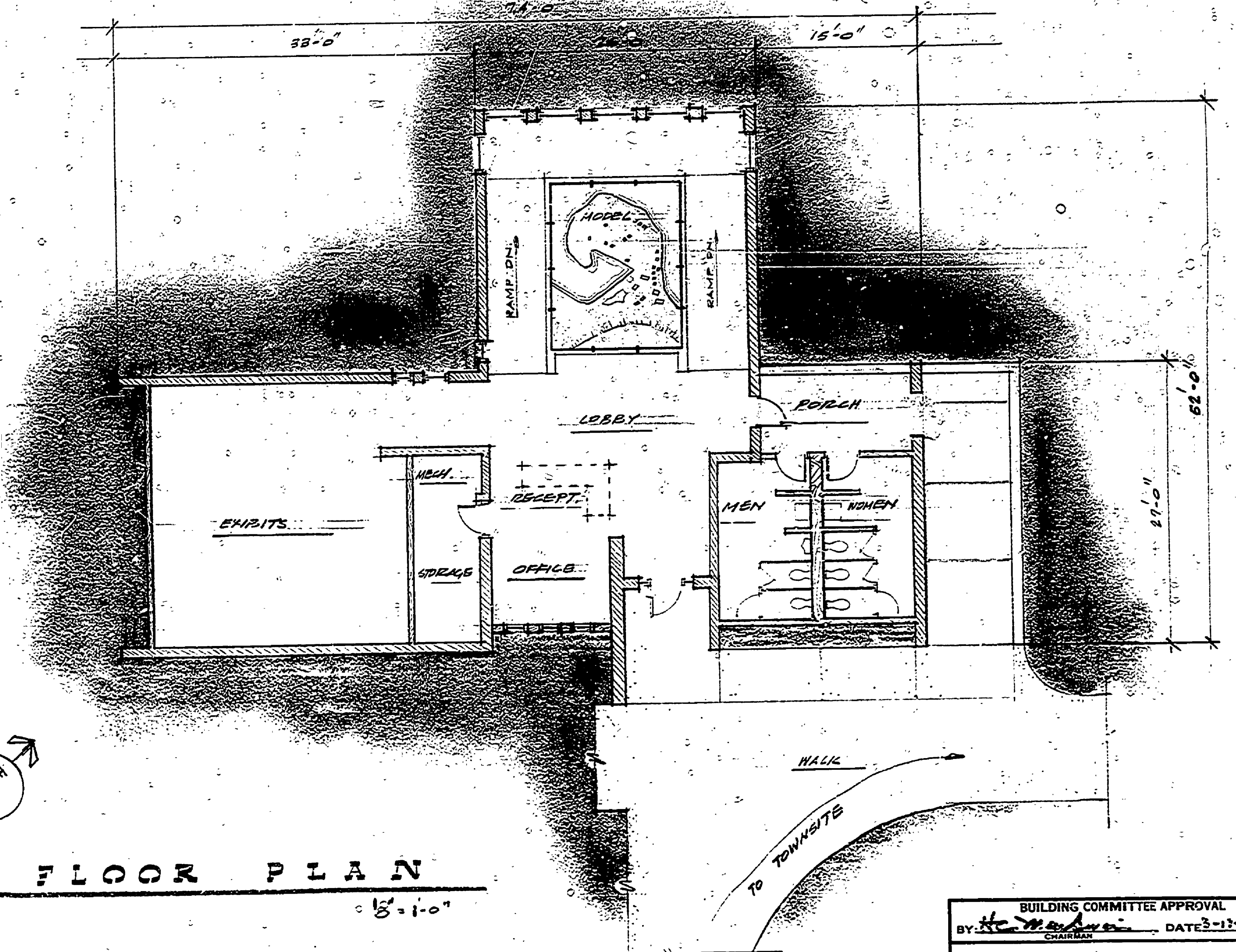
N.W. ELEVATION



S.E. ELEVATION



S.W. ELEVATION



FLOOR PLAN

PROPOSED VISITOR'S CENTER - FAYETTE STATE PARK

MATERIALS
 FLOORS: CONCRETE
 WALLS: WD. FRAME & MASONRY
 ROOF: BUILT-UP OVER WD. FRAMA
 ENCLOSED SPACE 2,830 S.F.

BUILDING COMMITTEE APPROVAL
 BY: *[Signature]* DATE: 3-13-71
 RECOMMENDED FOR APPROVAL: W.N.C. 1-4-71
 RECOMMENDED FOR APPROVAL: *[Signature]* 2-5-71
DIVISION/REGION APPROVAL
 BY: *[Signature]* 2-5-71
 APPROVED: *[Signature]* 2-5-71

DESIGNED BY	DRAWN BY	NO.	DATE	BY	REVISIONS	NO.	DATE	BY	REVISIONS
		1.				3.			
		2.				4.			

MICHIGAN DEPARTMENT OF NATURAL RESOURCES

PRELIMINARY SHEET TITLE

FAYETTE STATE PARK
 VISITOR'S CENTER

PROJECT NO. 24-1068
 SHEET 1 OF 1
 PLAN NO. A-202