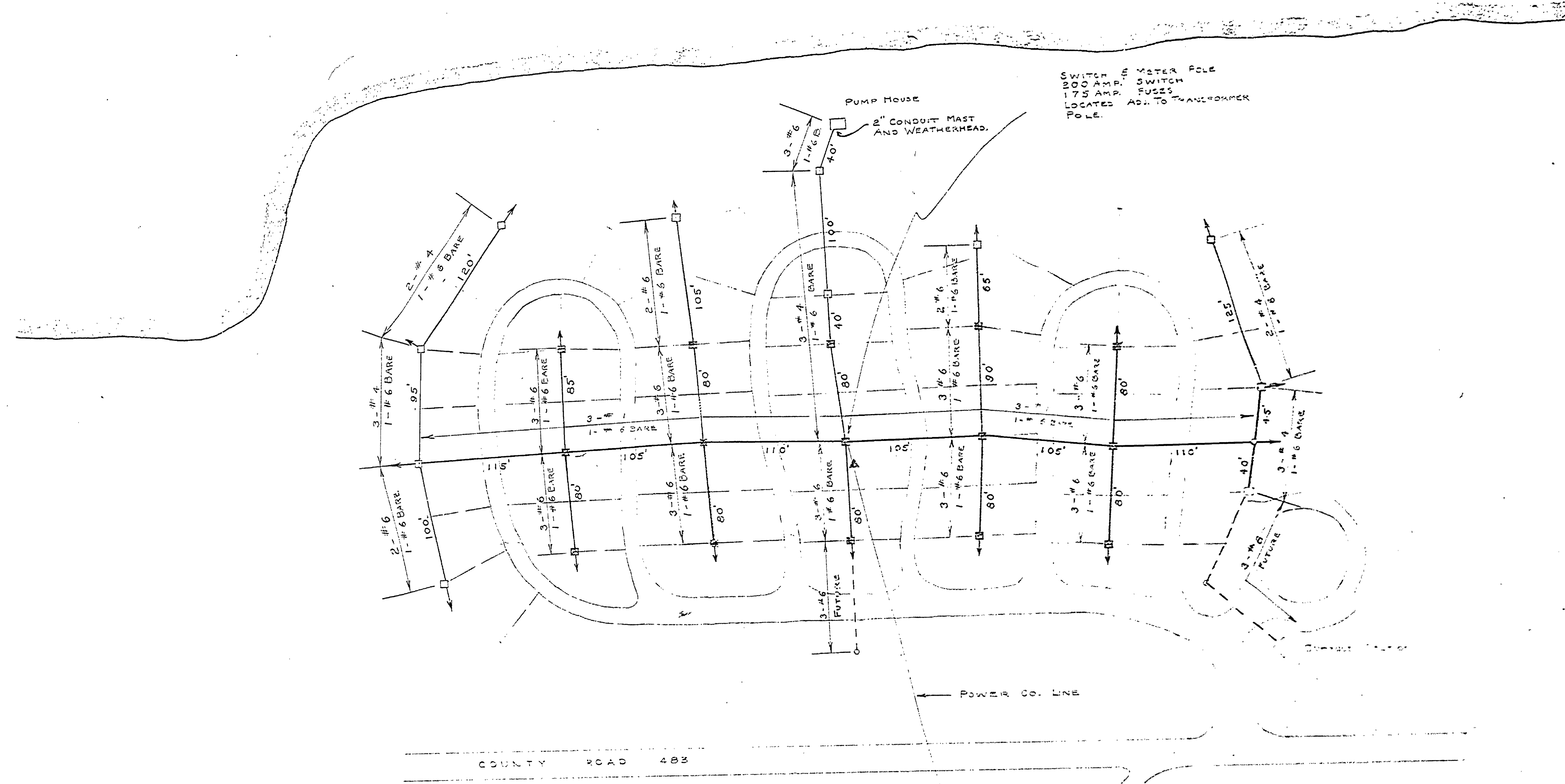


BIG BAY DE NOC



SWITCH & METER POLE
200 AMP. SWITCH
175 AMP. FUSES
LOCATED ADJ. TO TRANSFORMER
POLE.

- LEGEND**
- 4 OUTLET BOX ON POLE
 - 2 OUTLET BOX ON POLE
 - ◻ GUYED POLE & OUTLET BOX
 - ▲ TRANSFORMER POLE BY POWER CO.

SCALE: 1" = 50'

SHEET 3 - STANDARD SHEET No. SE 151

DESIGNED BY	DATE	REVIEWED	DATE	APPROVED	DATE	NO.	DATE	BY	REVISIONS	DATE	BY
W. J. P.	1/65	ARCHITECTURAL				1			4		
W. J. P.	1/65	ENGINEERING	10-65			2			5		
		LANDSCAPE				3			6		

CONSERVATION COMMISSION APPROVAL

BY: _____ DATE: _____

RECOMMENDED DESIGN
FOR APPROVAL: *Al J. Jones* Jan 1965
DESIGNER DATE

RECOMMENDED
FOR APPROVAL: _____ DATE: _____
IN CHARGE OF DESIGN

SECTION APPROVAL

BY: *Delbert Oliver* DATE: 1/17/65
SECTION CHIEF

MICHIGAN DEPARTMENT OF CONSERVATION

APPROVED: *W. J. P.* 1-27-65
CHIEF ENGINEER DATE

PLAN NO. PROJECT NUMBER SHEET
E-102 _____ 2 OF 3

MICHIGAN
DEPARTMENT OF CONSERVATION
PARKS AND RECREATION DIVISION

FAYETTE STATE PARK
CAMPGROUND ELECTRICAL
DISTRIBUTION SYSTEM

SHEET NO. 2 OF 3
PLAN NO. E-102