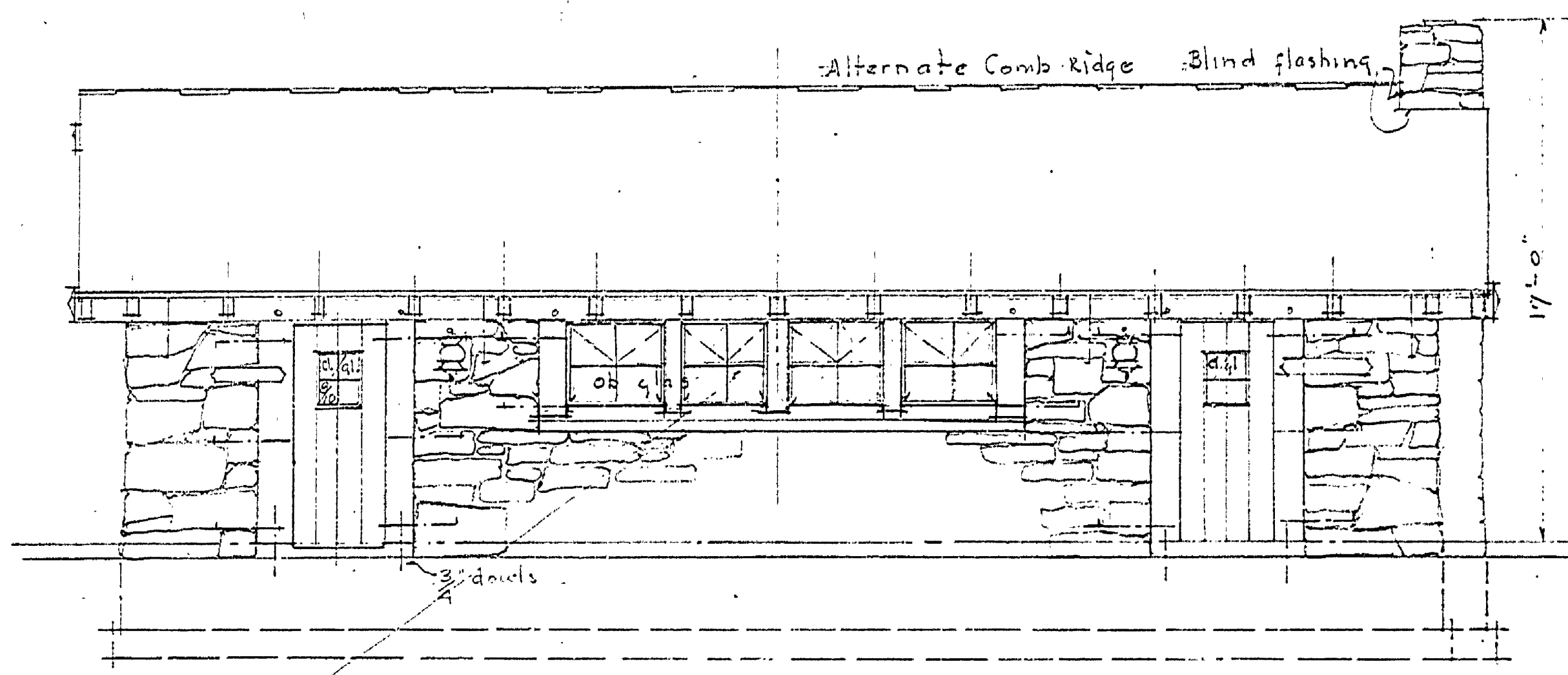
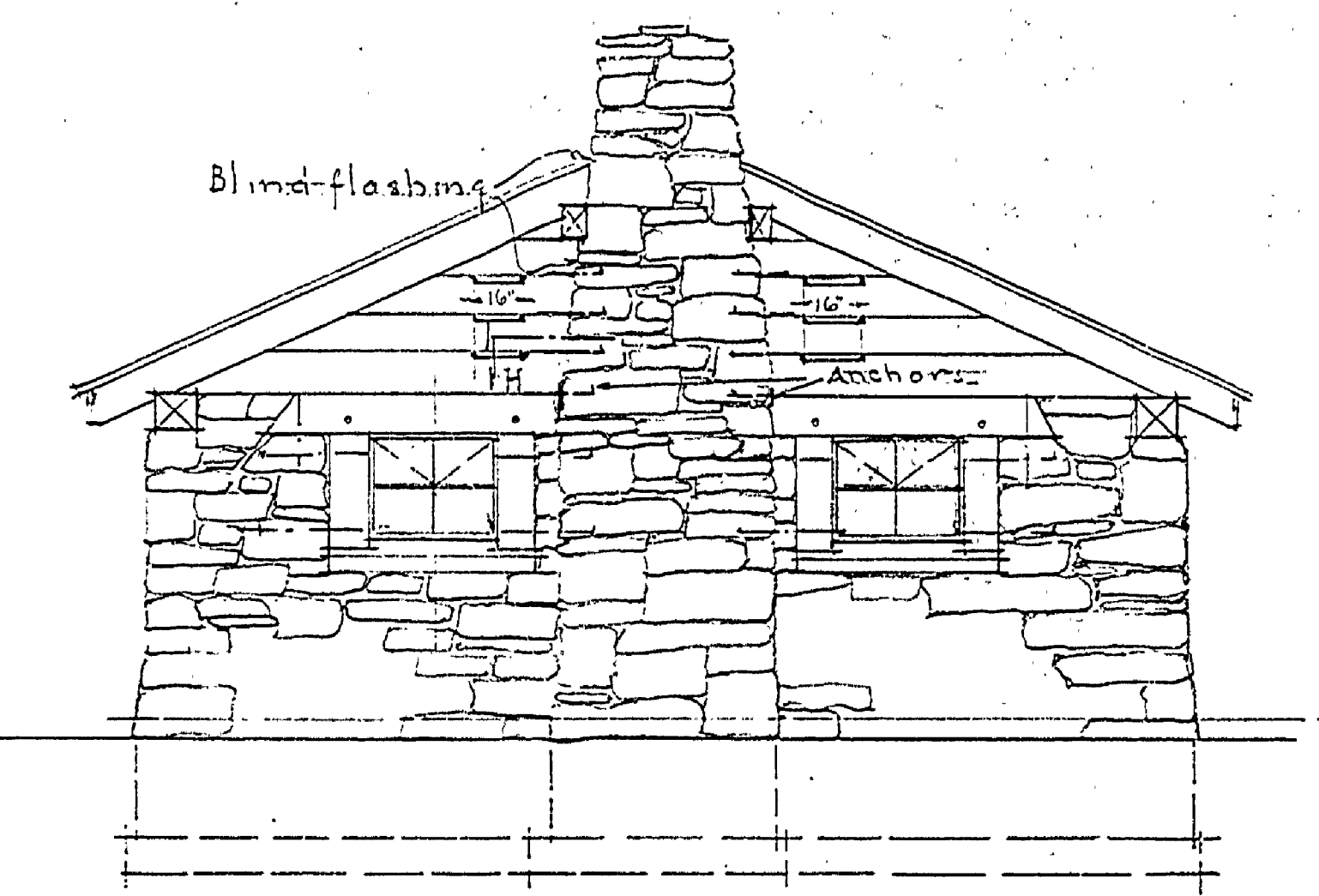


END ELEVATION
Scale 1/4" = 1'-0"

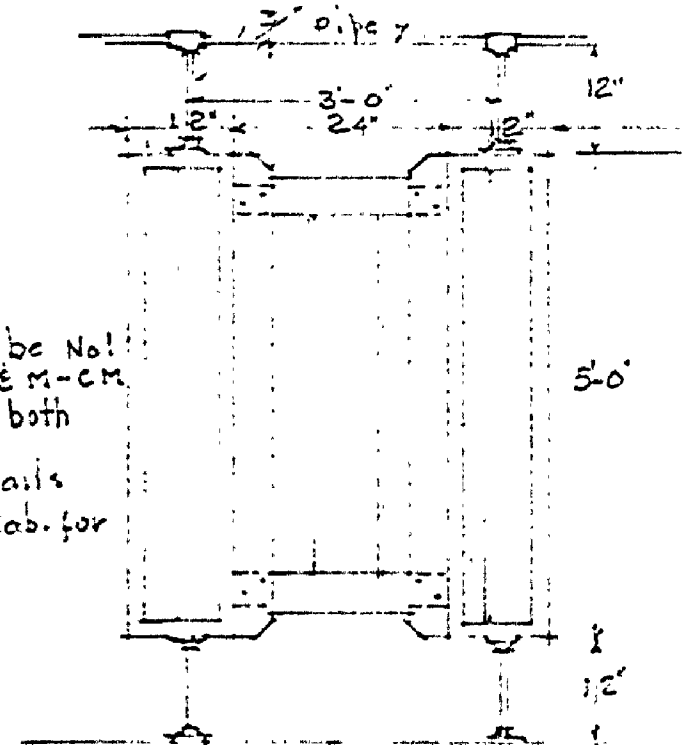


TYPICAL SIDE ELEVATION
Scale 1/4" = 1'-0"

Sash: all sash to be steel
Approx. 2'-10 1/2" wide & 2'-3 3/4" high with
one vertical and one horizontal muntin
fill sash to be fit in sections as shown
Note: Rev. 10/29/40



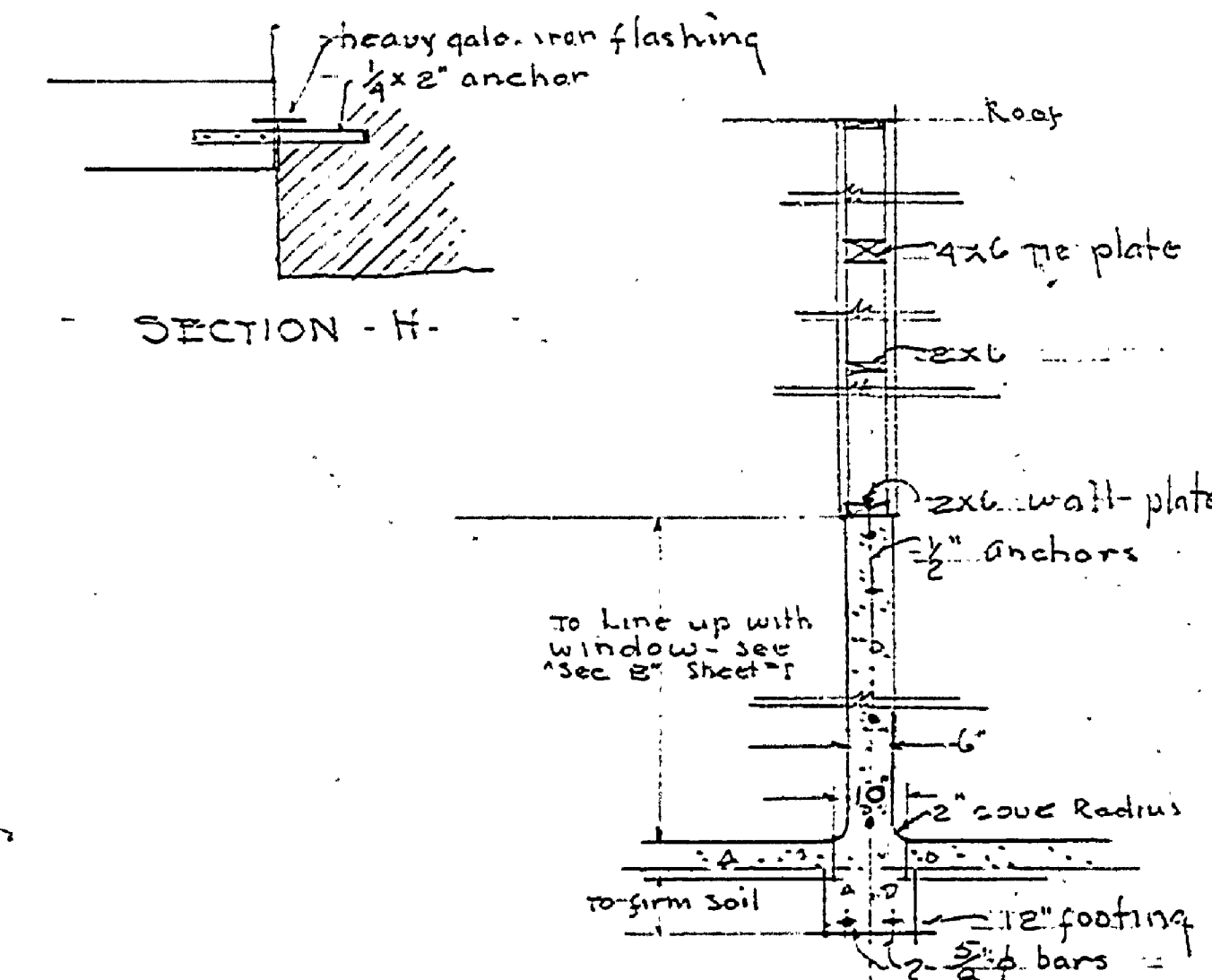
END ELEVATION
Scale 1/4" = 1'-0"



Daneberg to be Nat. Y.P. 3/16" DE R-CM and V-joint both sides
Door sashes & rails 1 1/2" x 4" W.P. Rob. for 5/8" panel

STALL DETAIL
Scale 1/2" = 1'-0"

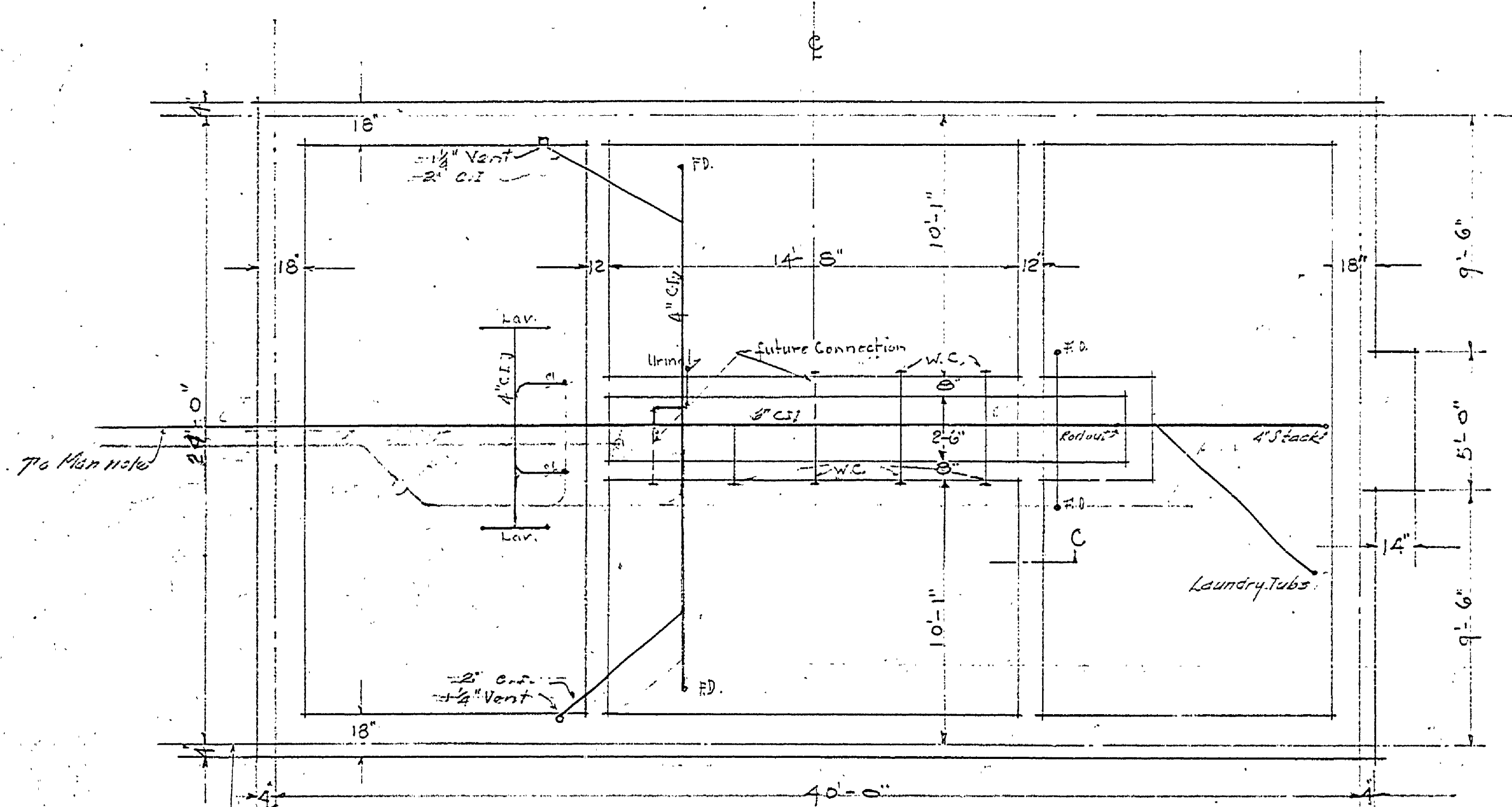
Note: for side elevation see section B
Above detail of door to be used for shower room



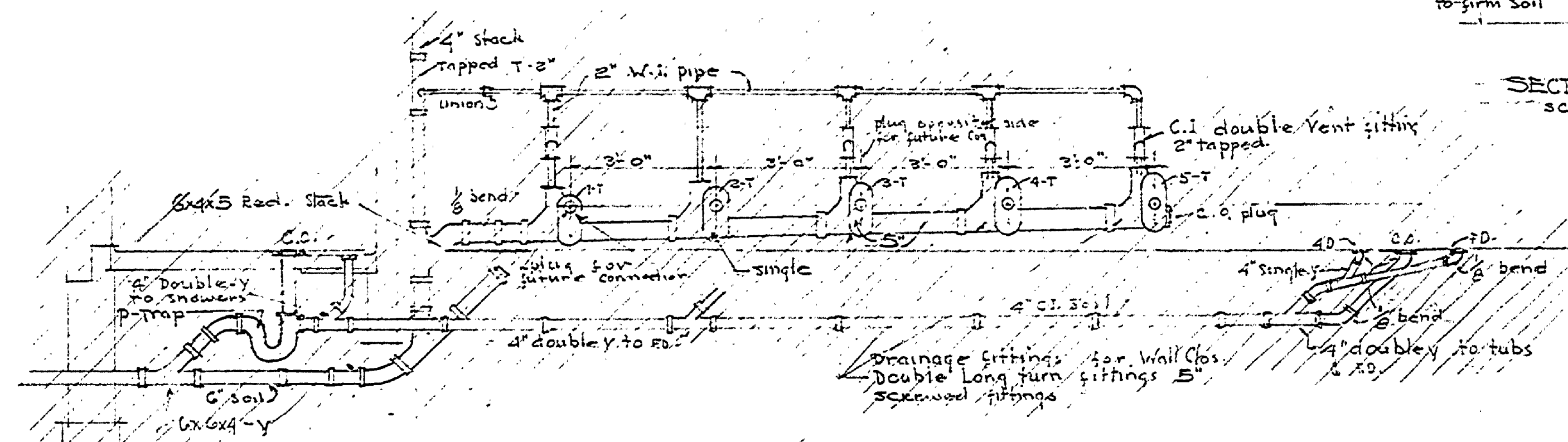
SECTION - H

To line up with window see 'see of shed'

SECTION C
Scale 1/2" = 1'-0"



FOUNDATION PLAN
Scale 1/4" = 1'-0"



DETAILED ASSEMBLY OF DRAINAGE FITTINGS FOR WALK TYPE W.C. & DRAINAGE SYSTEM

MICHIGAN DEPARTMENT OF CONSERVATION
PARKS DIVISION

Drawn by Orest Harlow	COMBINATION LAUNDRY & TOILET BUILDING	Part 2 of 5
Designed by Orest Harlow	FORT WILKINS, S.P.	Scale: as shown
Checked by		Plotted by
Prepared by		Date: 11/25
Approved by		
Approved		

INSURANCE No. 3
A-104
REVISED APRIL 12, 1940
RUBBING 3/6/41