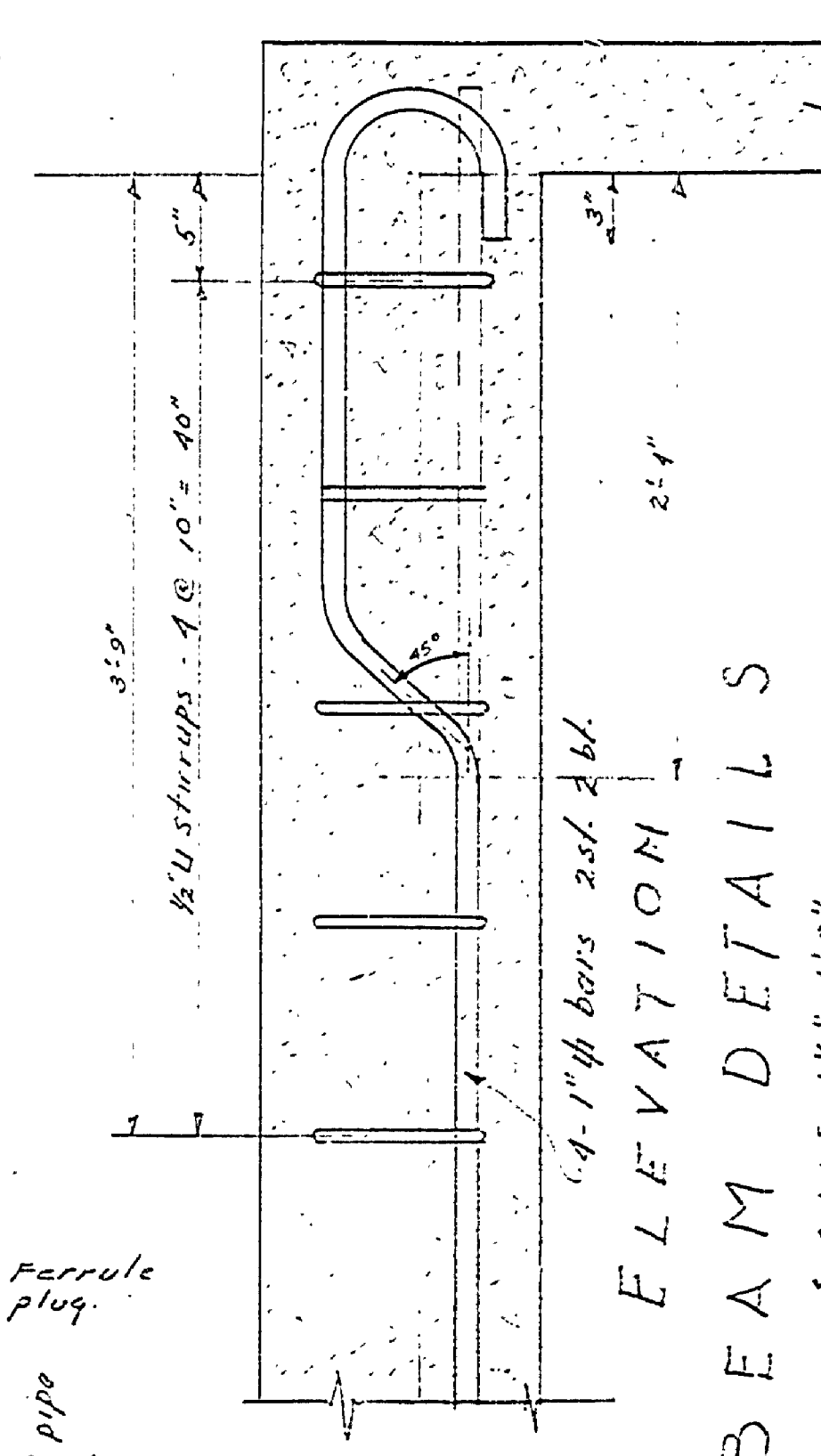
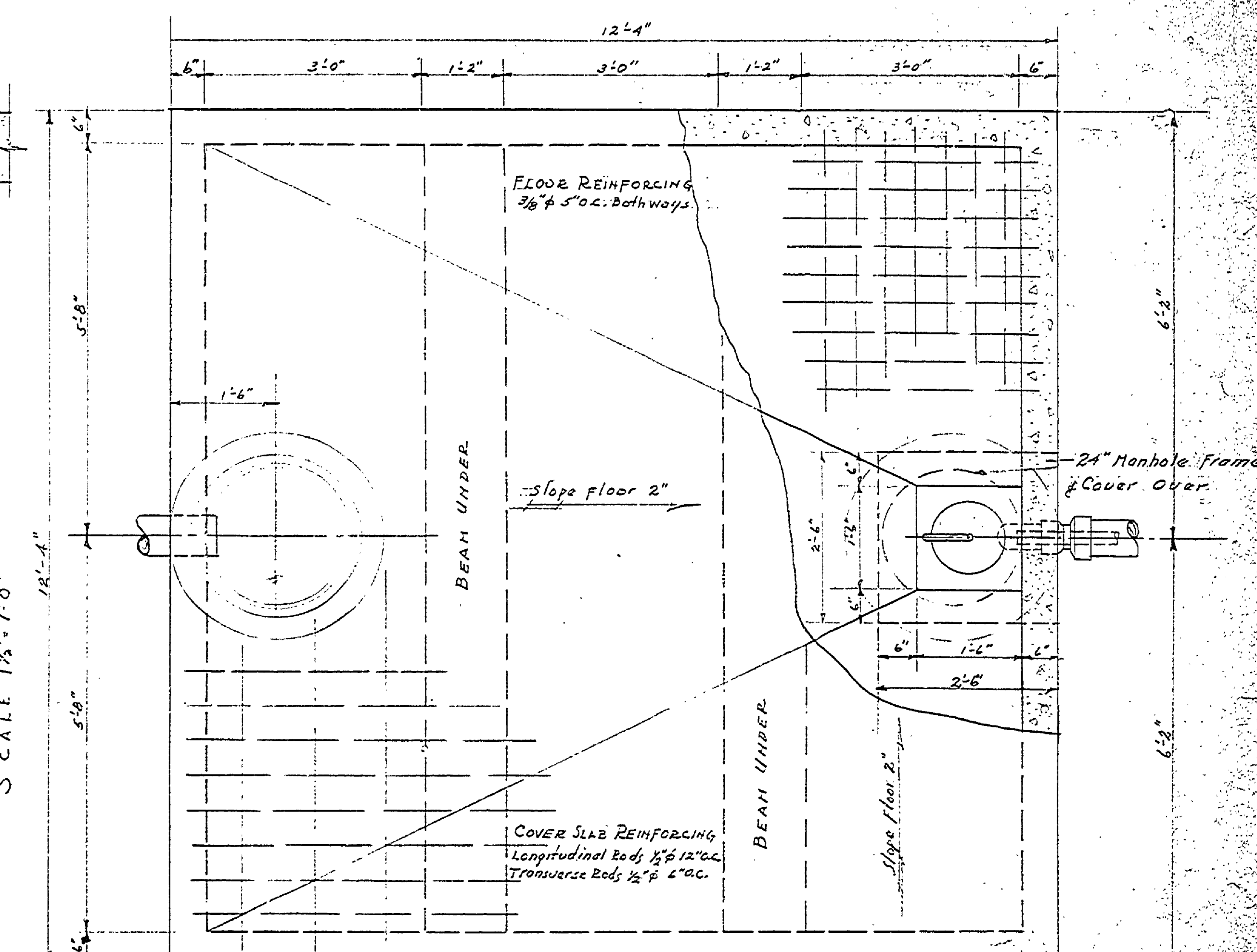


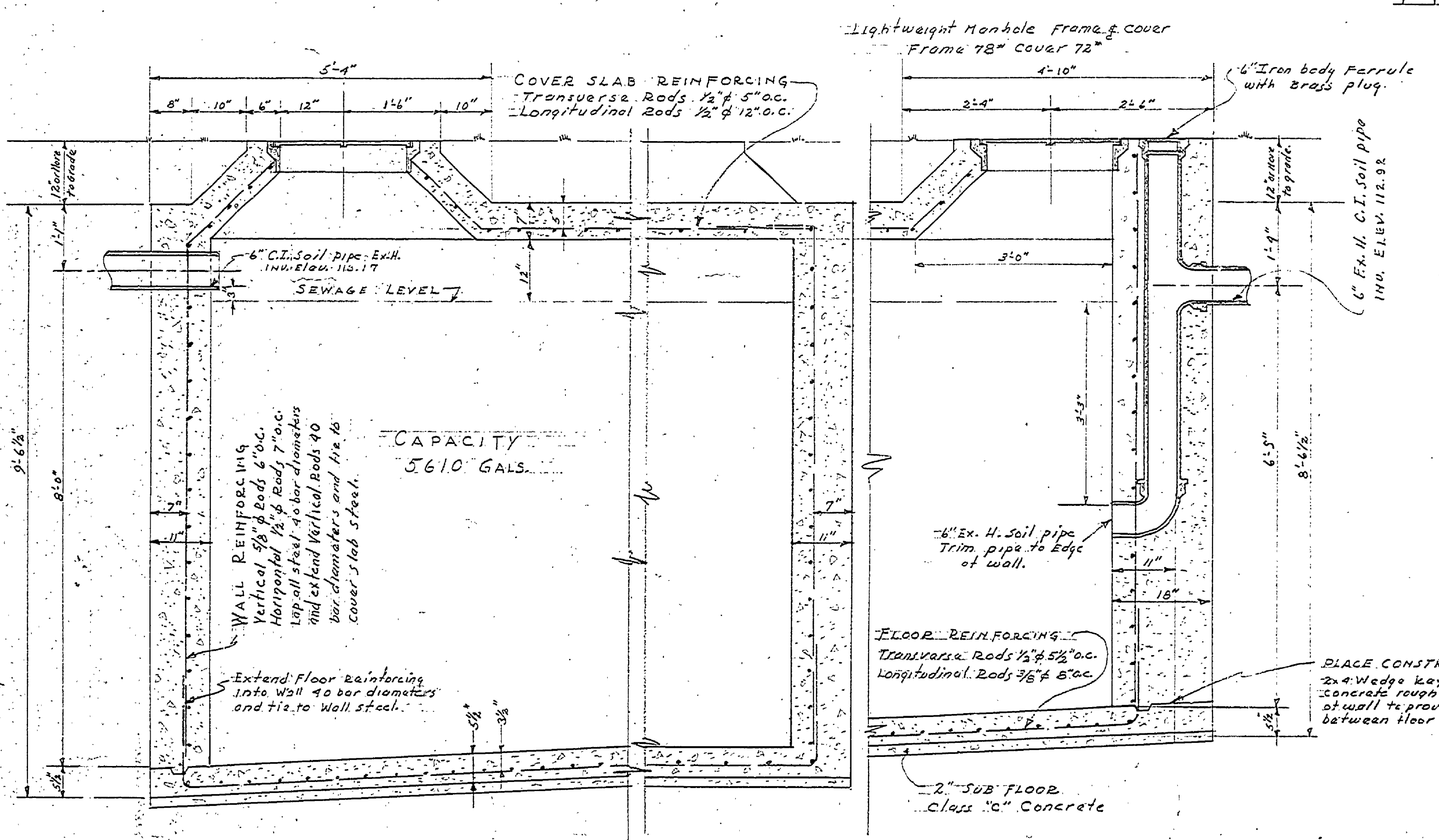
PLAN OF SEPTIC TANK
SCALE: 3/4"=1'-0"



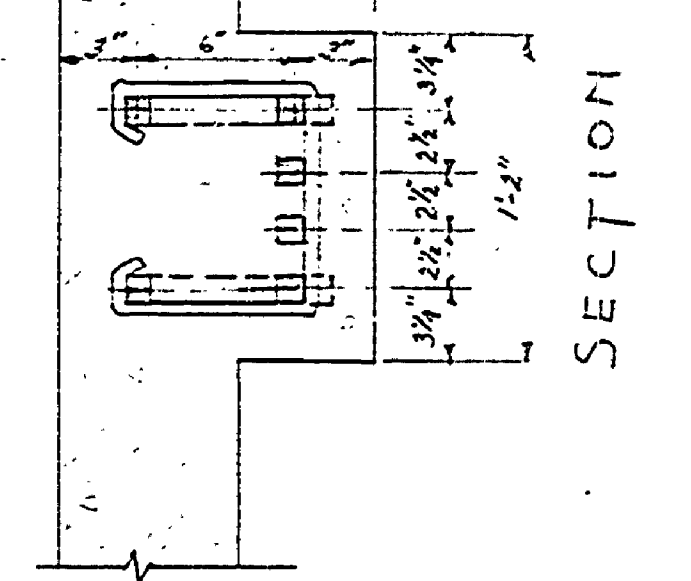
SECTION BEAM DETAILS
SCALE 1 1/2"=1'-0"



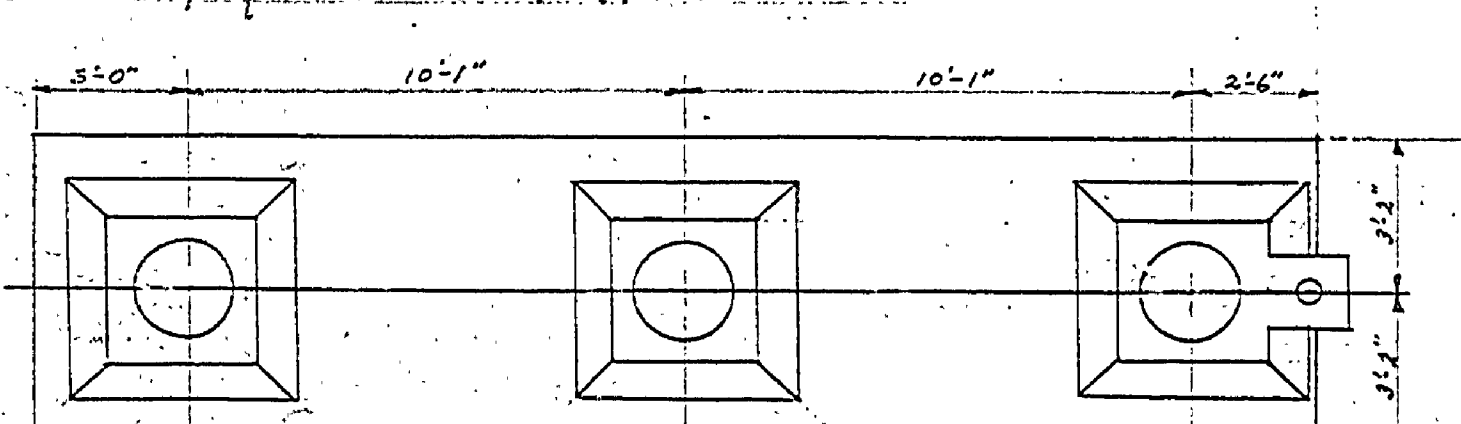
PLAN OF DOSING CHAMBER
SCALE: 3/4"=1'-0"



SECTION OF SEPTIC TANK
SCALE: 3/4"=1'-0"



SECTION OF DOSING CHAMBER
SCALE 3/4"=1'-0"



PLAN OF SEPTIC TANK COVER
SHOWING MANHOLE LOCATIONS
SCALE: 3/4"=1'-0"

EXAMINED AND APPROVED
OCT 13 1917
[Signature]

CONCRETE SPECIFICATIONS

The concrete mix shall consist of 1 sack of cement, 2.25 cu. ft. of fine aggregate, 4.00 cu. ft. of coarse aggregate and enough water to make a workable mix but not to exceed 6 gallons, or 1 sack of cement, 3.00 cu. ft. of bank run aggregate and enough water to make a workable mix but not to exceed 6 gallons. The aggregate shall be clean, free from silt and clay, and shall all pass a 1" screen. Time of mixing shall not be less than 1 1/2 minutes. The concrete shall be placed in the forms in horizontal layers, not over two feet thick and thoroughly spaded along the forms and around the reinforcing steel.

MICHIGAN DEPARTMENT OF CONSERVATION
STATE PARKS DIVISION
FORT WILKINS STATE PARK
DISPOSAL SYSTEM
PICNIC AREA T.S. BLDG.
DESIGNED BY: H. C. M.
DRAWN BY: H. C. M.
CHECKED BY: [Signature]
PREPARED AND APPROVED BY: [Signature]
APPROVED BY: INSPECTOR