

B.M. J-66 Elev. 100.00
On bridge

B.M. "A" Elev. 103.95
Spike in 10" W. Pine
Sta. 4+50 - 35' Right

B.M. "B" Elev. 105.03
Spike in 12" N. Pine
Sta. 6+25 - 23' Right

B.M. "C" Elev. 105.16
Nail in root of 14" W. Pine
Sta. 9+00 - 18' Left

Natural Witnesses to
P.I. Sta. 1+10.0
60 d nail in road
21" W. Pine S.W. 9.2'

Natural Witnesses to
P.T. Sta. 1+81.0
1" Iron pipe
16" W. Pine V.V. 28.6'
24" W. Pine S.W. 30.3'

Natural Witnesses to
P.C. Sta. 1+98.0
1" Iron pipe
13" N. Pine N 25° E 42.1'
16" W. Pine S 86° W 43.1'
24" W. Pine S 50° W 46.0'

Natural Witnesses to
P.I. Sta. 2+74.2
1" Iron pipe
U.S.C.G. Tel. pole N 26° W 20.7'
15" N. Pine N 47° W 48.5'
Stockade S. 108.2'

Natural Witnesses to
P.T. Sta. 3+48.2
1" Iron pipe
10" Spruce N 5° E 32.6'
24" N. Pine S 44° E 34.1'
20" N. Pine S 10° W 54.3'

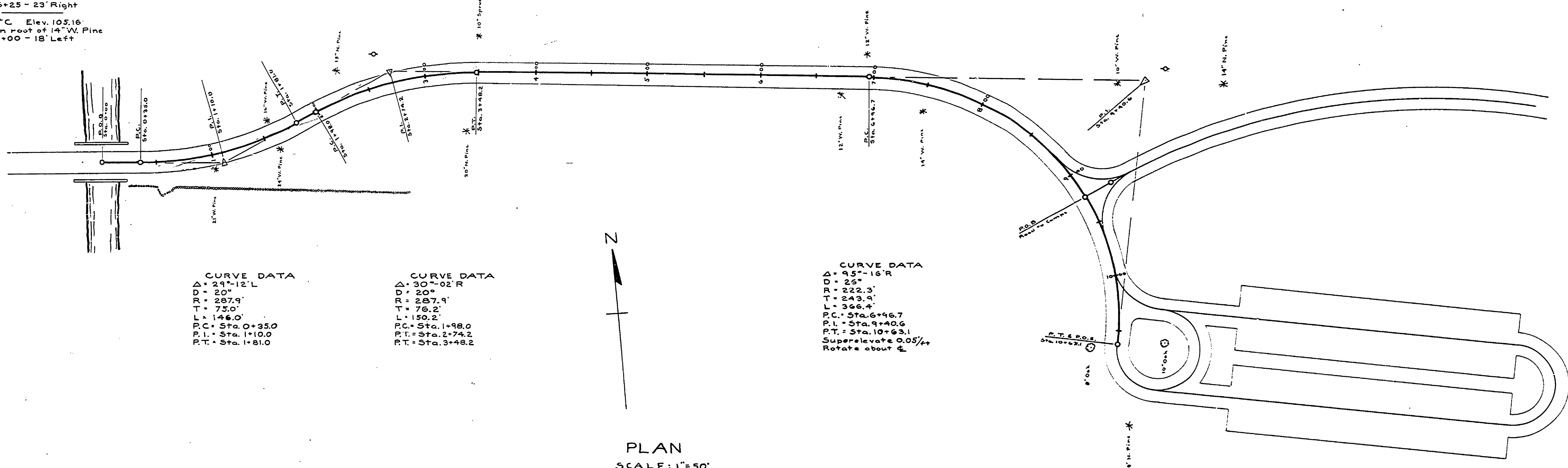
Natural Witnesses to
P.C. Sta. 6+96.7
1" Iron pipe
12" W. Pine N 10° W 19.7'
14" W. Pine S 35° E 37.9'
12" W. Pine S 64° W 30.0'

Natural Witnesses to
P.I. Sta. 9+40.6
1" Iron pipe
U.S.C.G. Tel. pole N 31° E 20.1'
14" N. Pine S 73° E 70.6'
10" W. Pine S 80° W 22.8'

Natural Witnesses to
P.T. & P.O.E. Sta. 10+63.1
1" Iron pipe
10" Oak N 85° E 43.0'
18" N. Pine S 20° W 76.9'
8" Oak W 23.6'

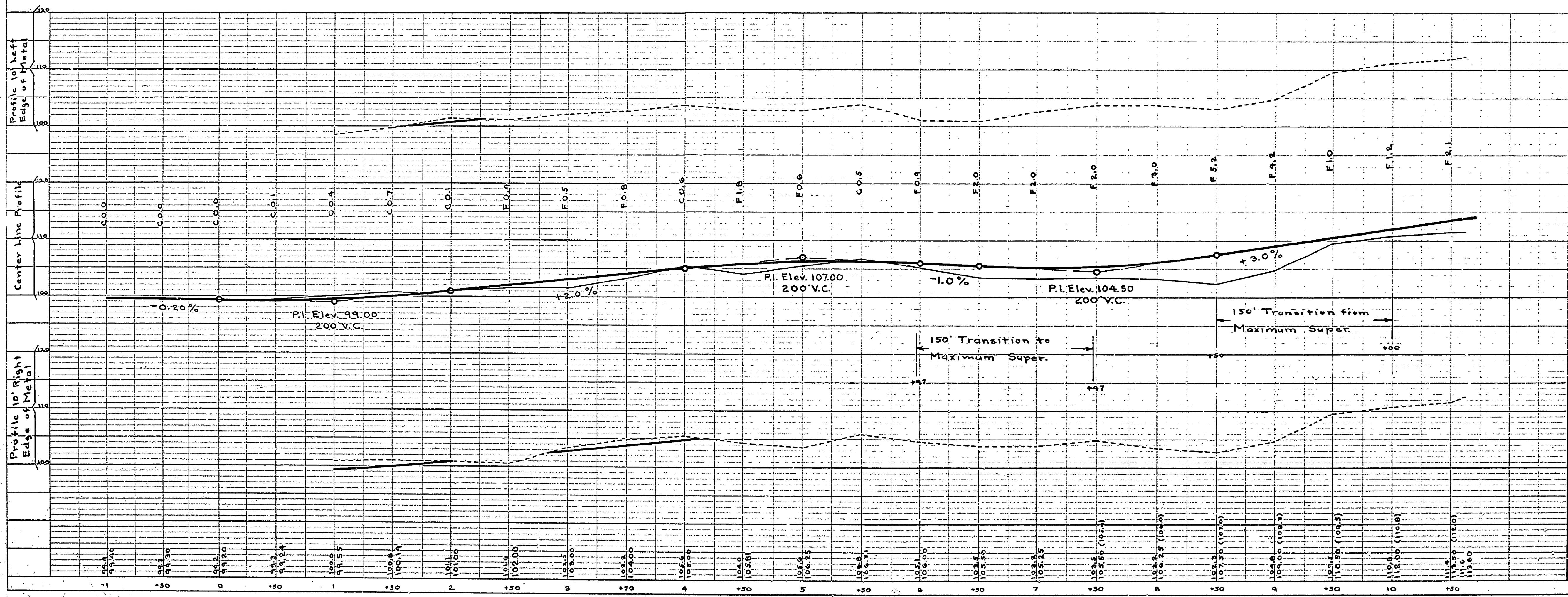
B.M. "D" Elev. 113.42
Nail in 8" Oak
Center of parking area turnaround

DATE	
BY	
SURVEYED	
PLANNED	
NOTED	
NO.	



PLAN
SCALE: 1"=50'

DATE	
BY	
SURVEYED	
PLANNED	
NOTED	
NO.	



NOTE: Whenever the elevations of the metal on the revised plans differ from those on the original plans, the original elevations are shown in parentheses.

MICHIGAN DEPARTMENT OF CONSERVATION STATE PARKS DIVISION	
DRAWN BY	SCALE AS SHOWN
DESIGNED BY	DATE 11-20-29
CHECKED BY	INSPECTOR
APPROVED BY	DATE