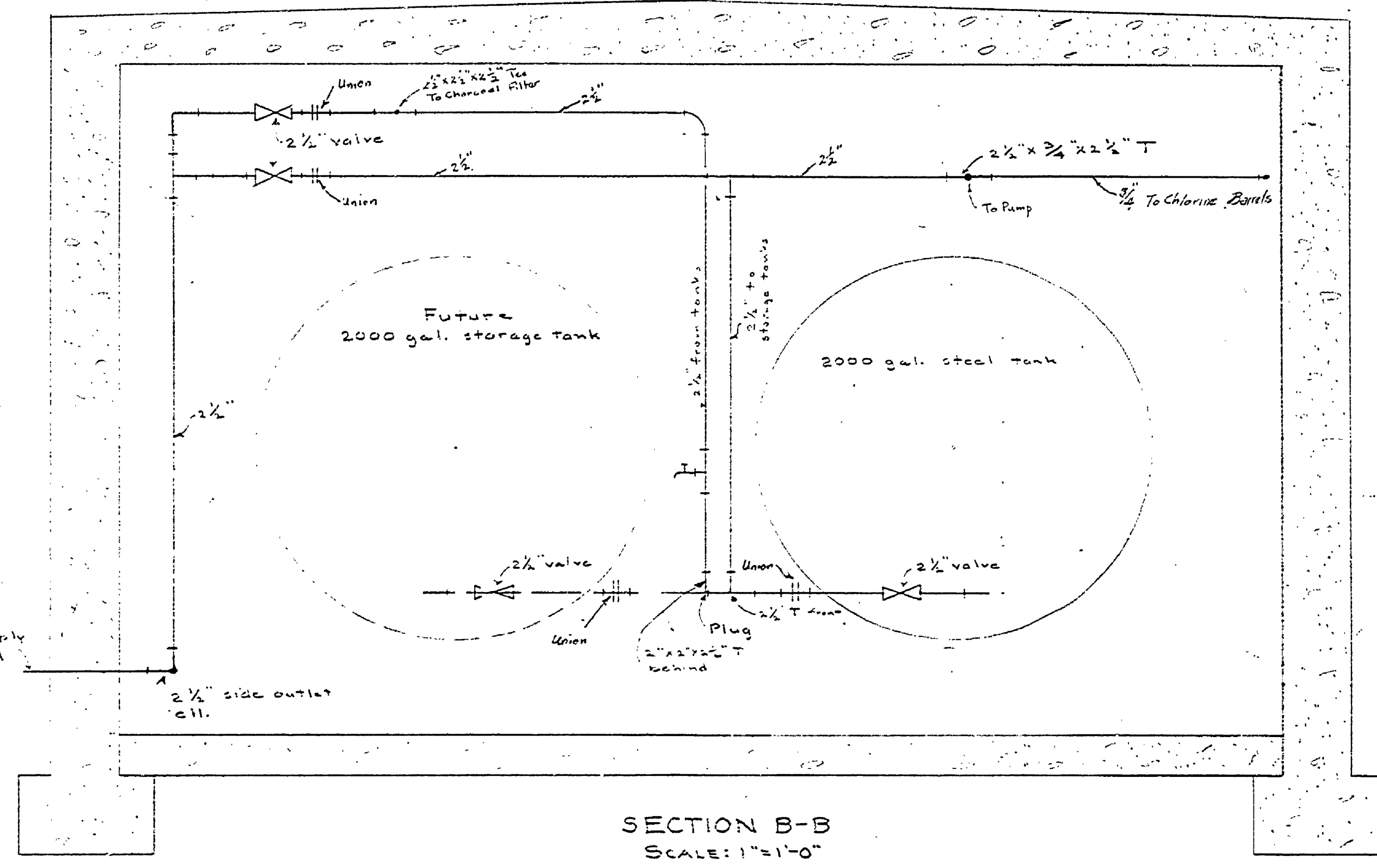
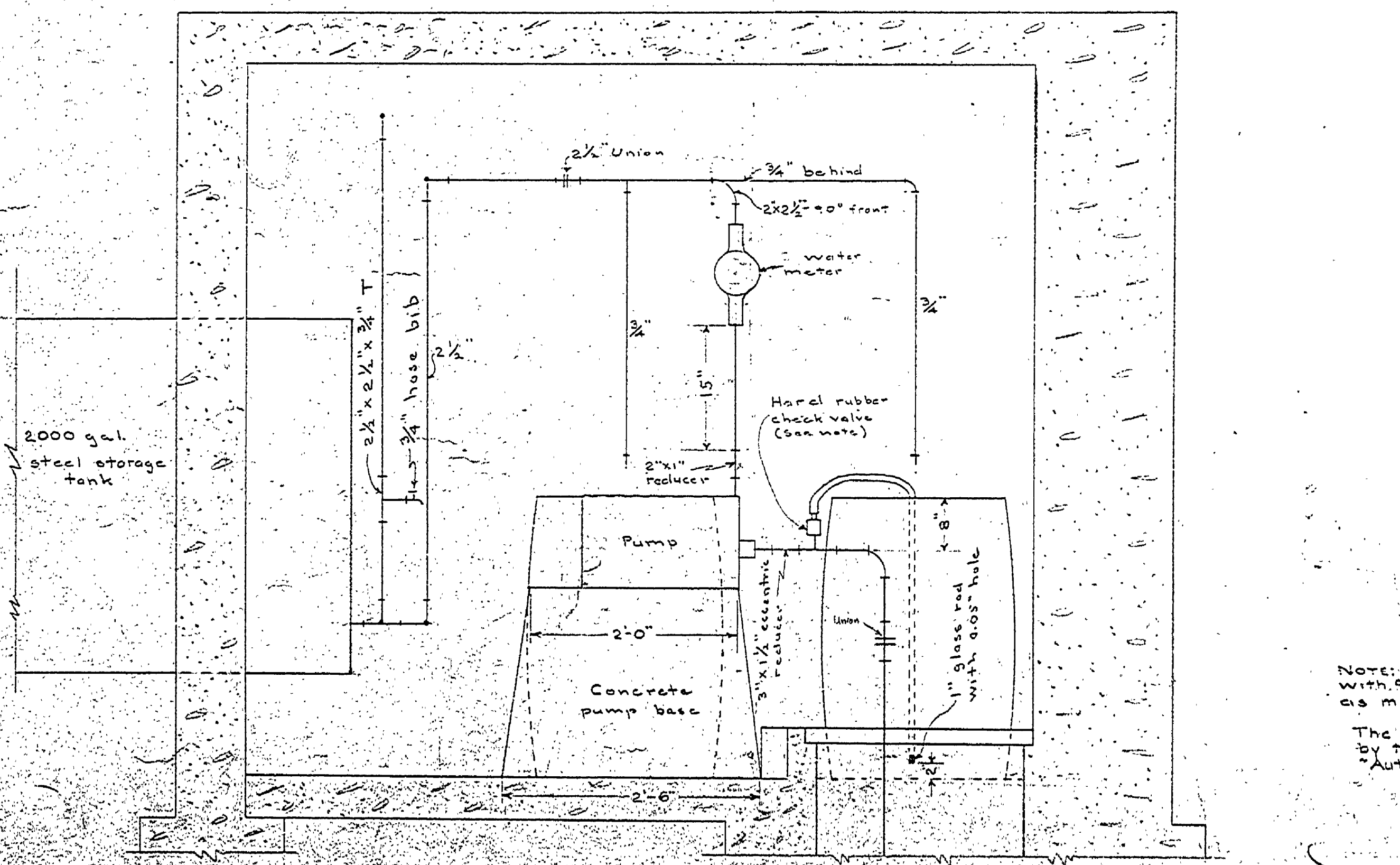


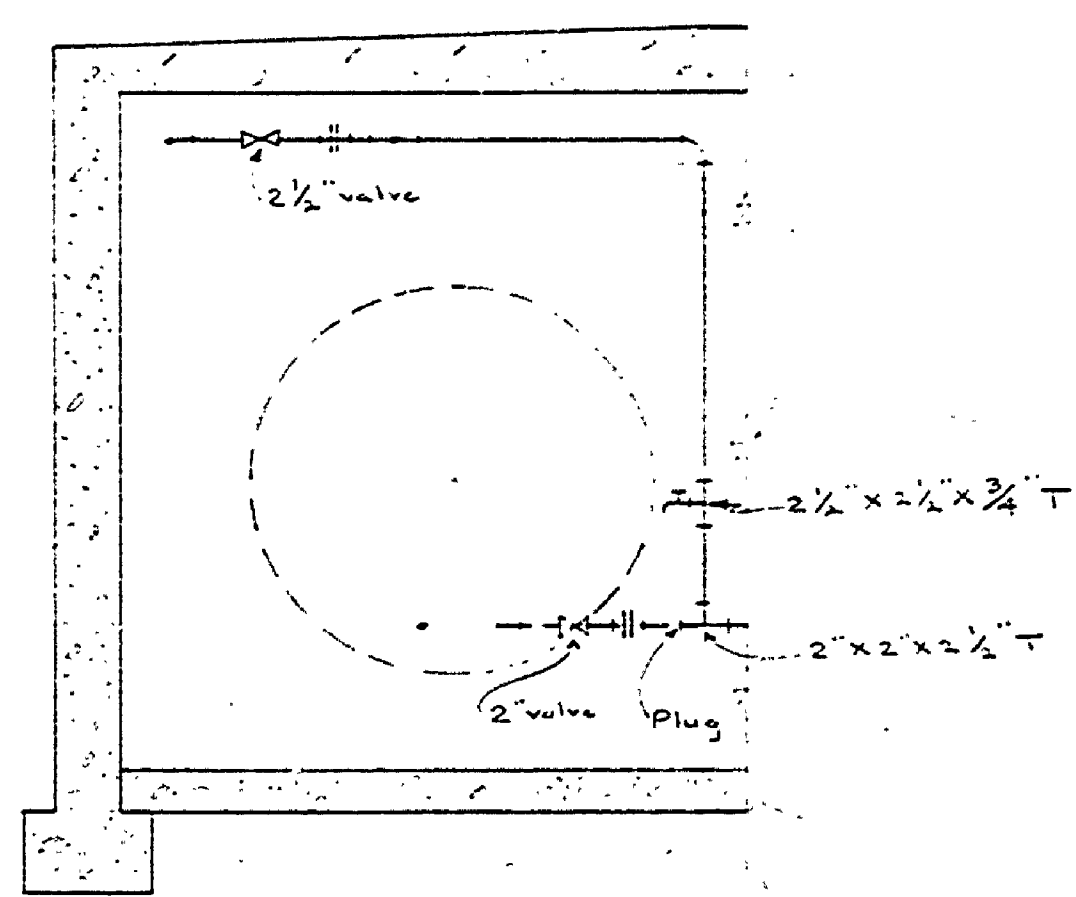
PLAN  
SCALE: 1"=1'-0"



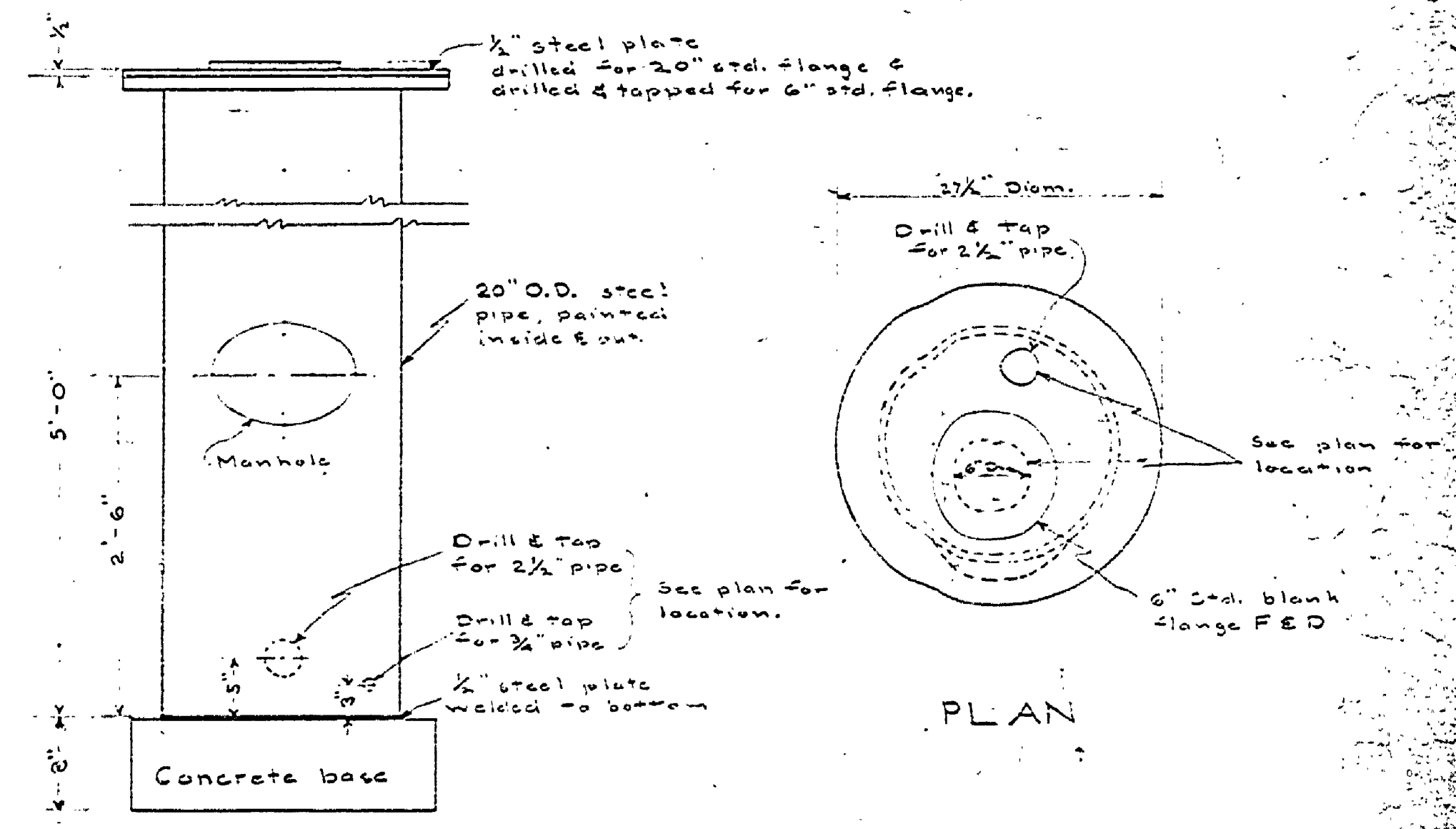
SECTION B-B  
SCALE: 1"=1'-0"



SECTION A-A  
SCALE: 1"=1'-0"



SECTION C-C  
SCALE: 1/2"=1'-0"



DETAIL OF CHARCOAL FILTER  
SCALE: 1"=1'-0"

NOTE: Provide one "Hellige Comparator" complete with color discs graduated from 0.05 to 1.0 as manufactured by Wallace & Tiernan Co.  
The hard rubber check valve is manufactured by the Proportioneer, Inc. and is called "Automatic Injection Nozzle Check Valve."

**PREPARATION OF CHLORINE SOLUTION**  
Dissolve 10 lbs. of H.T.H. 15 in barrel No. 1 with 50 gallons of water. Place 5 gallons of this solution in barrel No. 2 and add 50 gallons of water. These quantities may be varied slightly to maintain a chlorine residual between 0.2 and 0.3 parts per million.  
Barrel No. 2 should last for approximately 16 hrs. actual pumping time.  
H.T.H. 15 is a sodium hypochlorite containing 15% available chlorine and is manufactured by The Mathieson Alkali Works, Niagara Falls, New York.

|  |                         |                 |
|--|-------------------------|-----------------|
| MICHIGAN DEPARTMENT OF CONSERVATION STATE PARKS DIVISION |                         |                 |
| DRAWN BY<br>K.E.D.                                       | F.T. WILKINS STATE PARK | PLANNING        |
| DESIGNED BY<br>H.C.M.                                    | PUMP LAYOUT             | SCALE: AS SHOWN |
| CHECKED BY   | PUMP HOUSE              | DATE: 1-1-21    |
| PREPARED AND APPROVED BY                                 | C.W. DESSAULT           | DATE            |
| APPROVED BY  | INSPECTOR               | DATE            |

E-102  
Added 2" water meter 2-25-21 W.R.S.