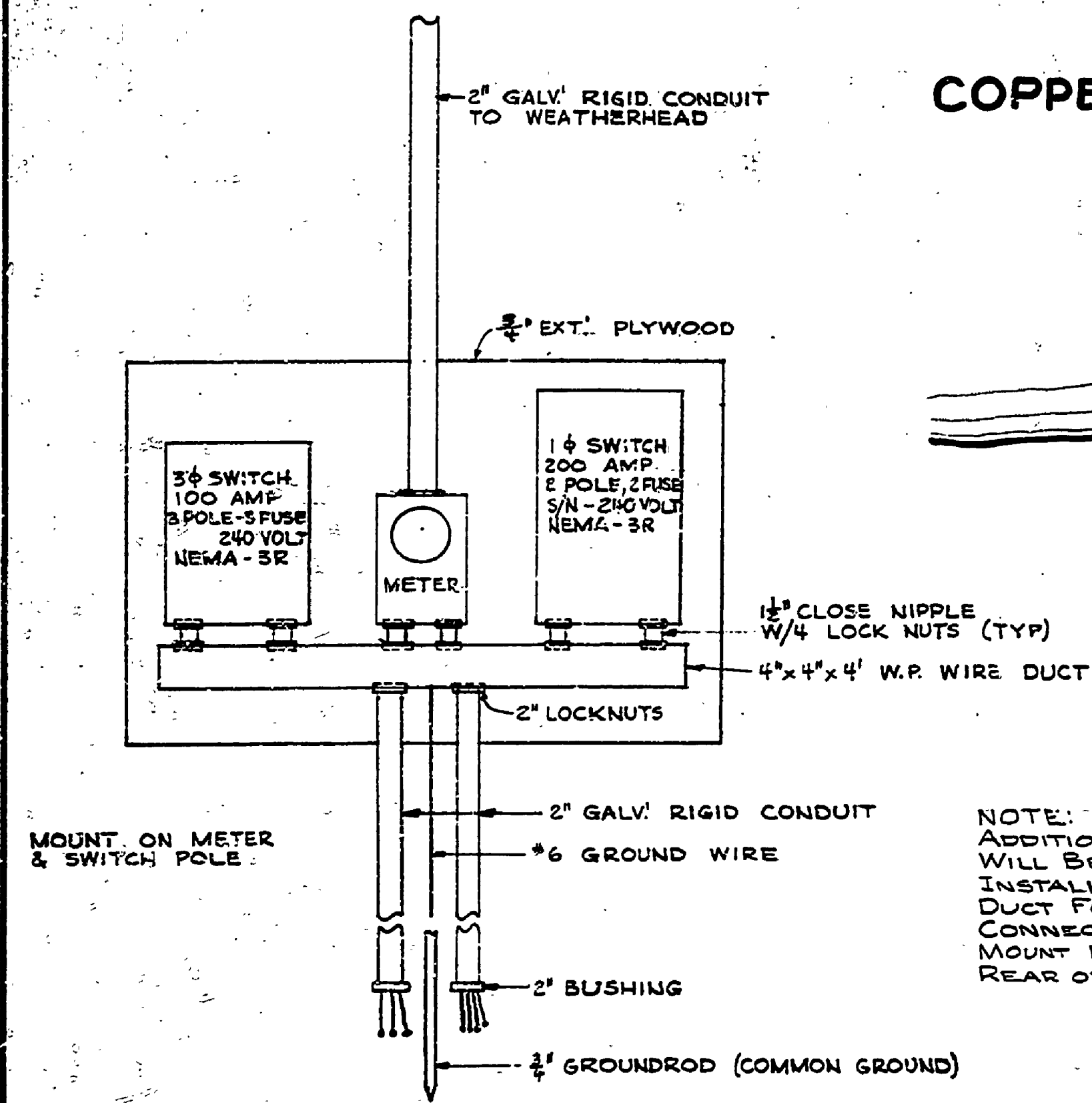
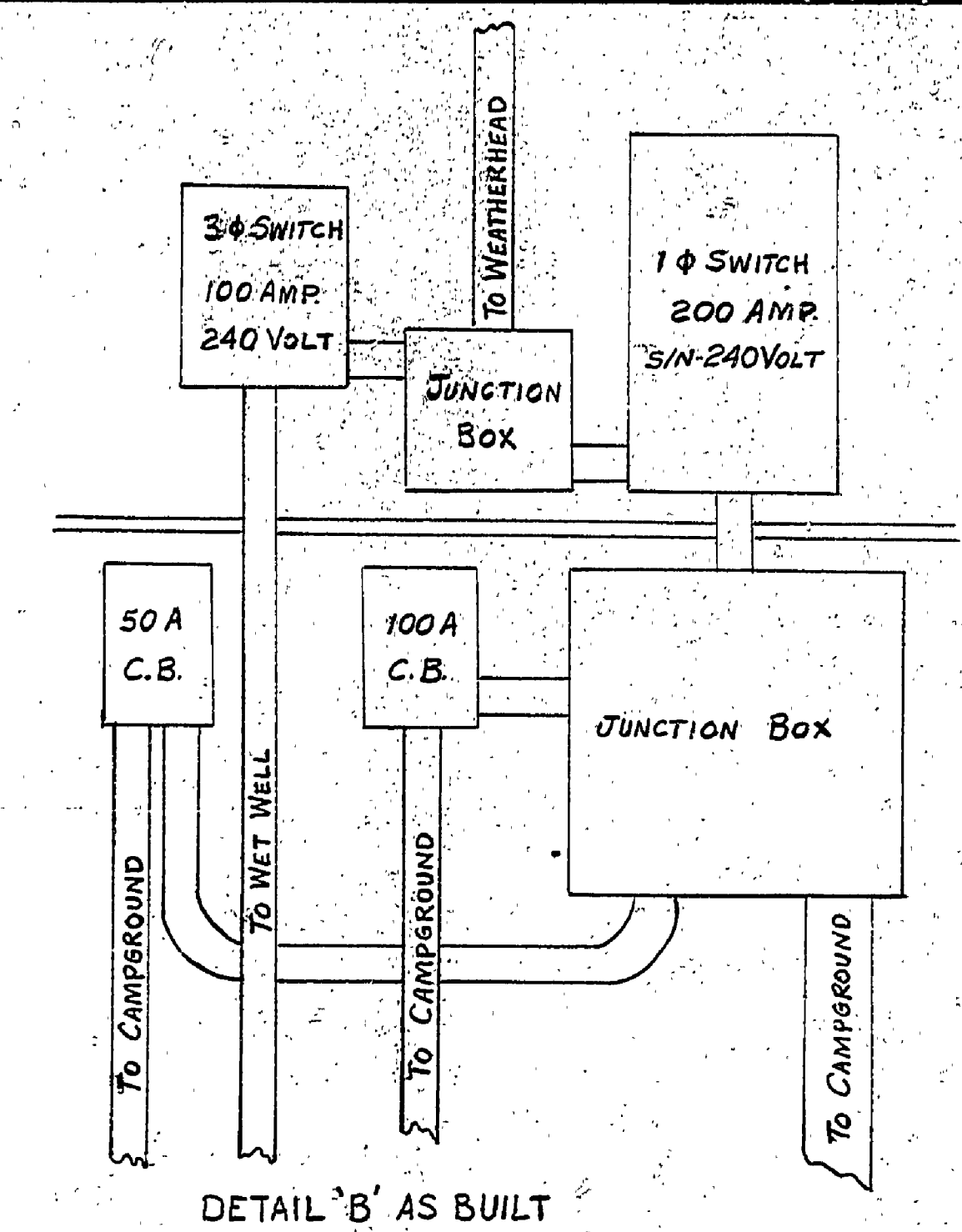


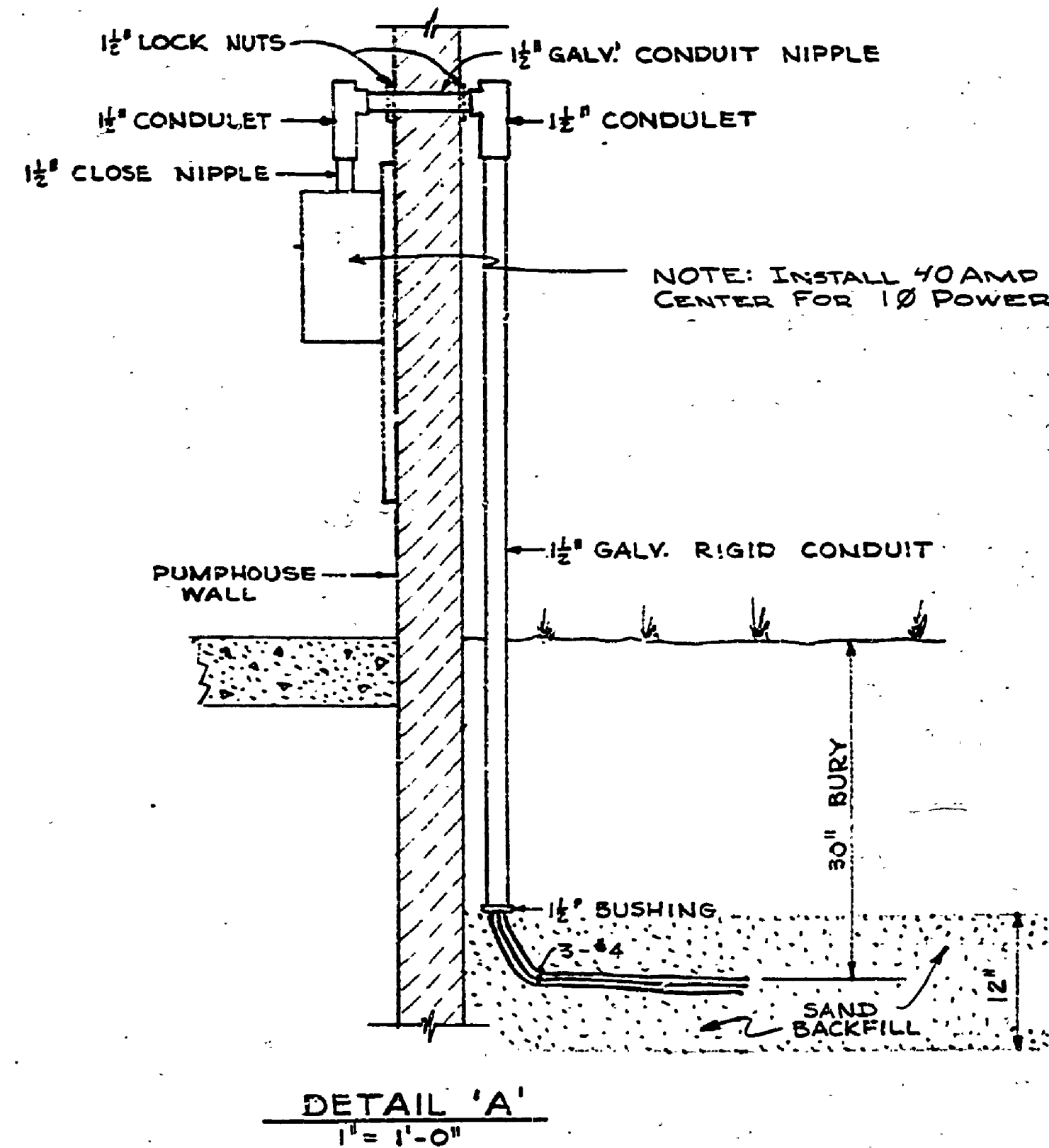
COPPER HARBOR



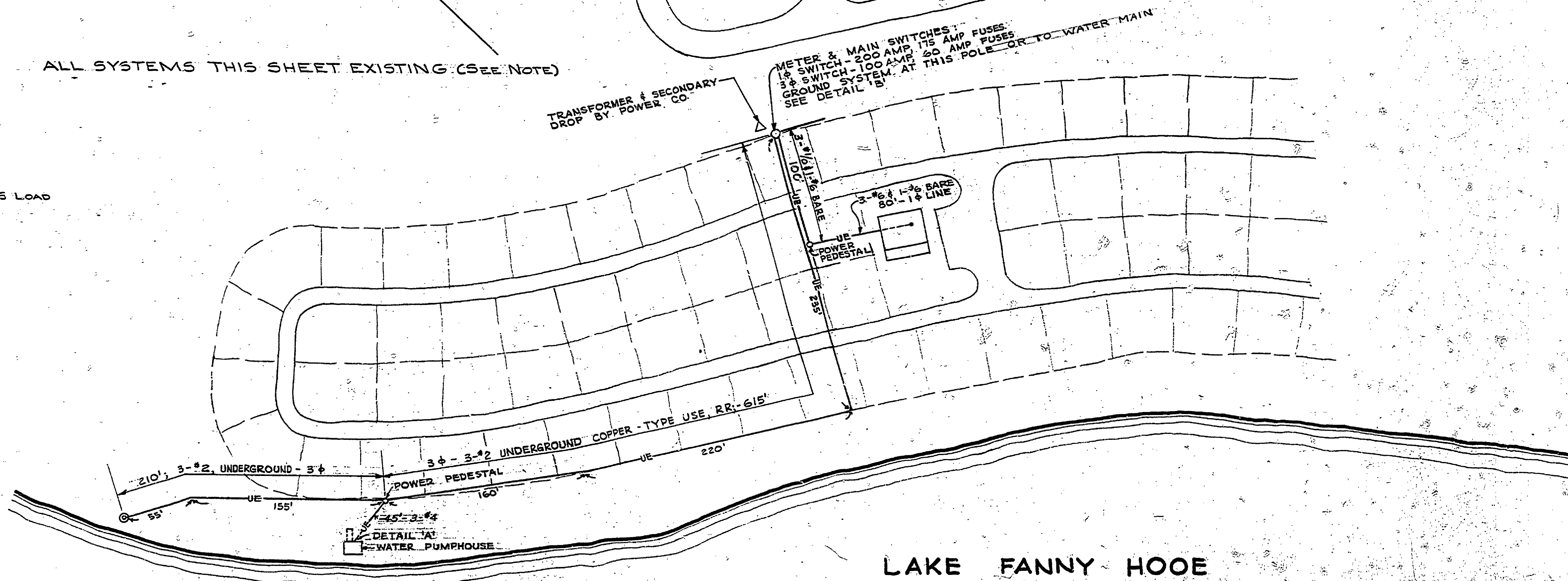
NOTE: THE METER PANEL EXISTS AS SHOWN. ADDITIONS TO THE PANEL FOR CAMPGROUND WIRING WILL BE REQUIRED AS FOLLOWS: INSTALL 1-3\" OR 2-2\" CONDUITS TO THE 4\"x4\"x4\" W.P. WIRE DUCT FOR THE ADDITIONAL UNDERGROUND WIRING. CONNECT SYSTEM GROUND TO NEAREST WATER MAIN. MOUNT 100AMP & 50AMP CIRCUIT BREAKER BOXES ON REAR OF ENTRANCE PANEL.



ALL SYSTEMS THIS SHEET EXISTING (SEE NOTE)



NOTE: INSTALL 40AMP QO25 LOAD CENTER FOR 1Ø POWER.



LAKE FANNY HOOE

SURVEYED BY	DESIGNED BY	DRAWN BY	NO.	DATE	BY	REVISIONS	NO.	DATE	BY	REVISIONS	MICHIGAN DEPARTMENT OF CONSERVATION	FORT WILKINS STATE PARK ELECTRICAL SYSTEM WET WELL, PUMPHOUSE, TOILET BLDG.	SHEET NO. OF	FORT WILKINS STATE PARK ELECTRICAL SYSTEM
	ROYET	COTE	5-66	2-70	D.B.	As Built	1						3 OF 3	PLAN NO. E-105-B