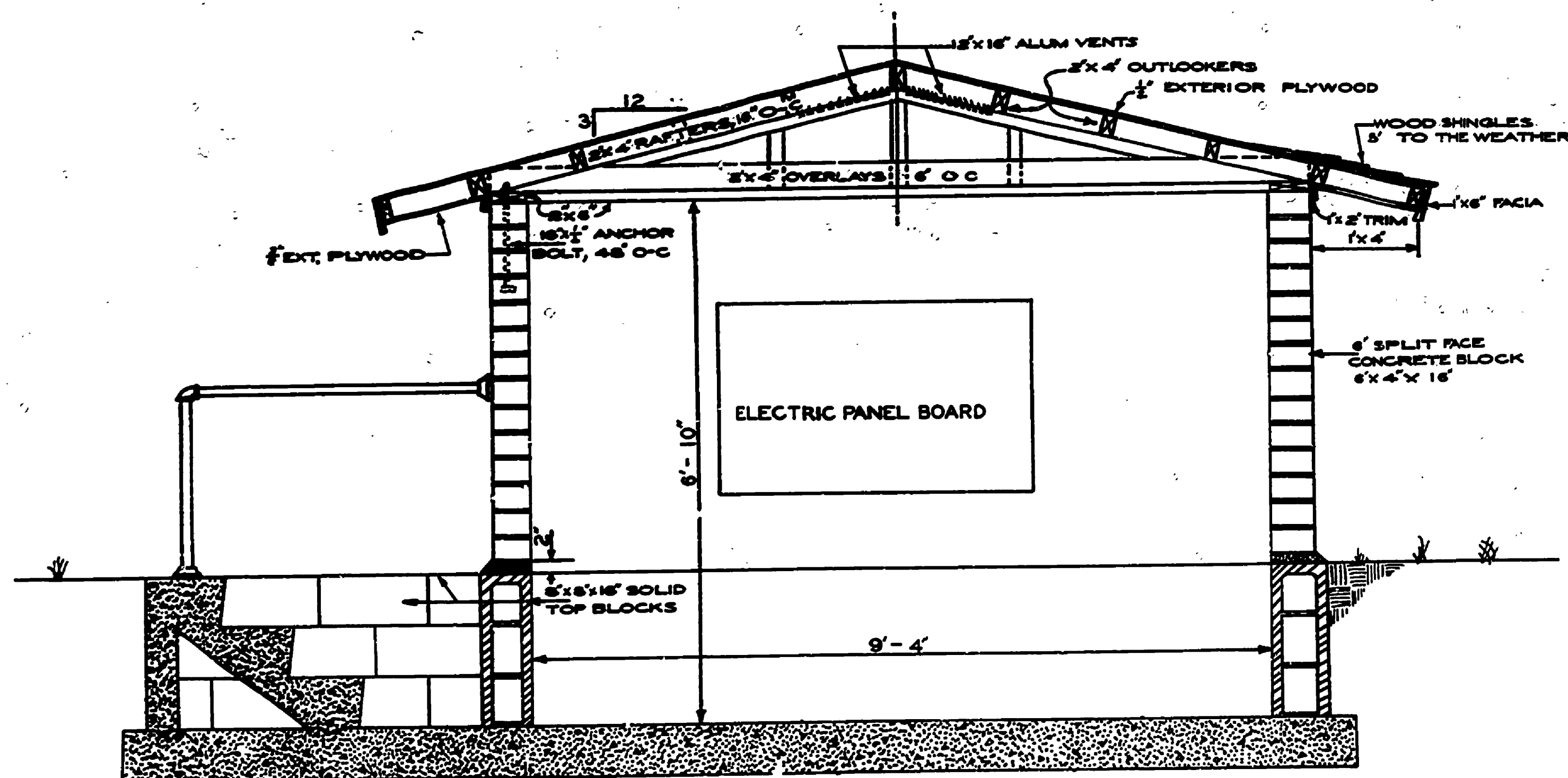
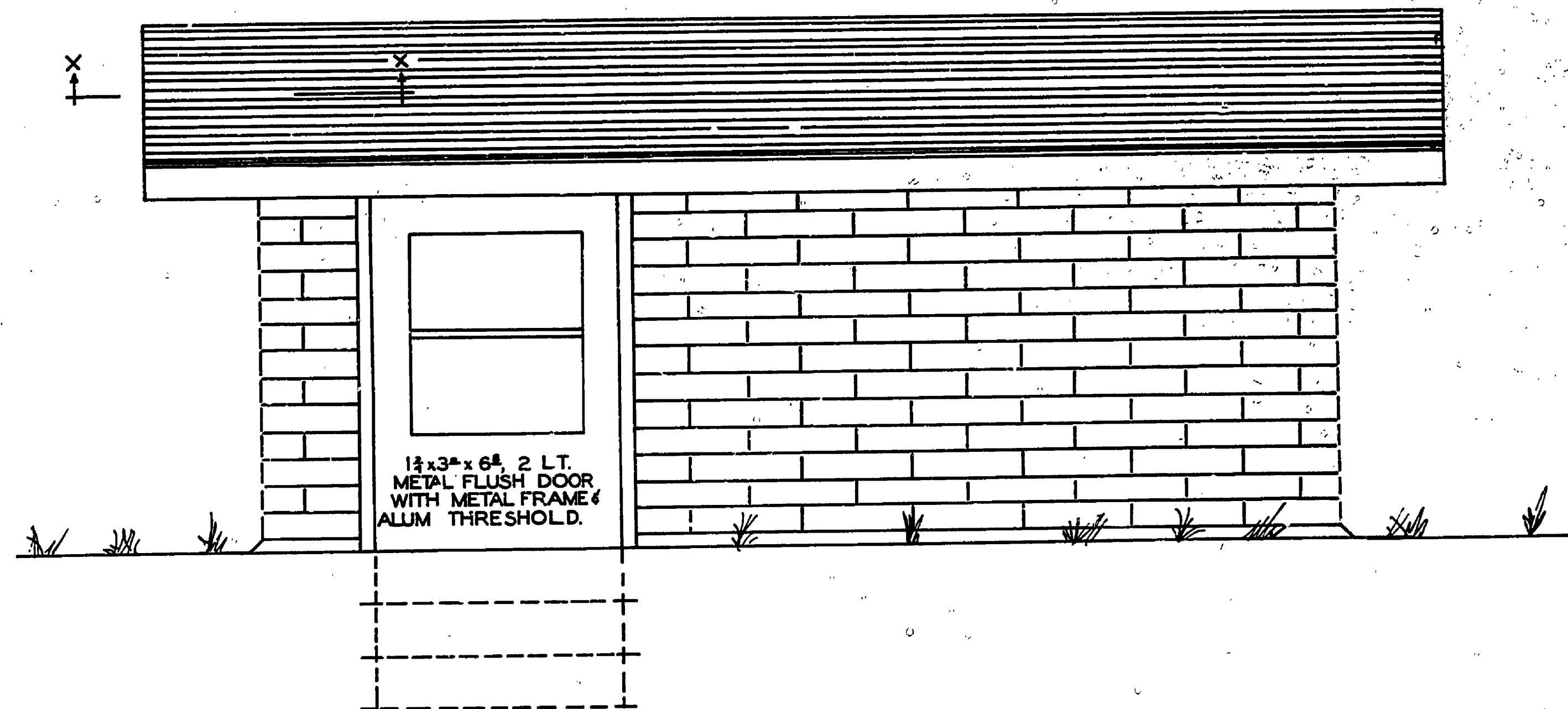


SECTION X-X
12'-7"-0"



SECTION A-A
9'-4"-0"



SOUTH ELEVATION
2'-7"-0"

SURVEYED BY	DRAWN BY <i>Collin</i>	10-67	NO.	DATE	BY	REVISIONS	NO.	DATE	BY	REVISIONS	MICHIGAN DEPARTMENT OF CONSERVATION	FORT WILKINS STATE PARK PUMPHOUSE	SHEET NO. _____ OF _____	SHEET 6 OF 7	PLAN NO. E-106 A
			1.					3.							
DESIGNED BY	CHECKED BY	DATE	2.				4.						976-008-4-C1		