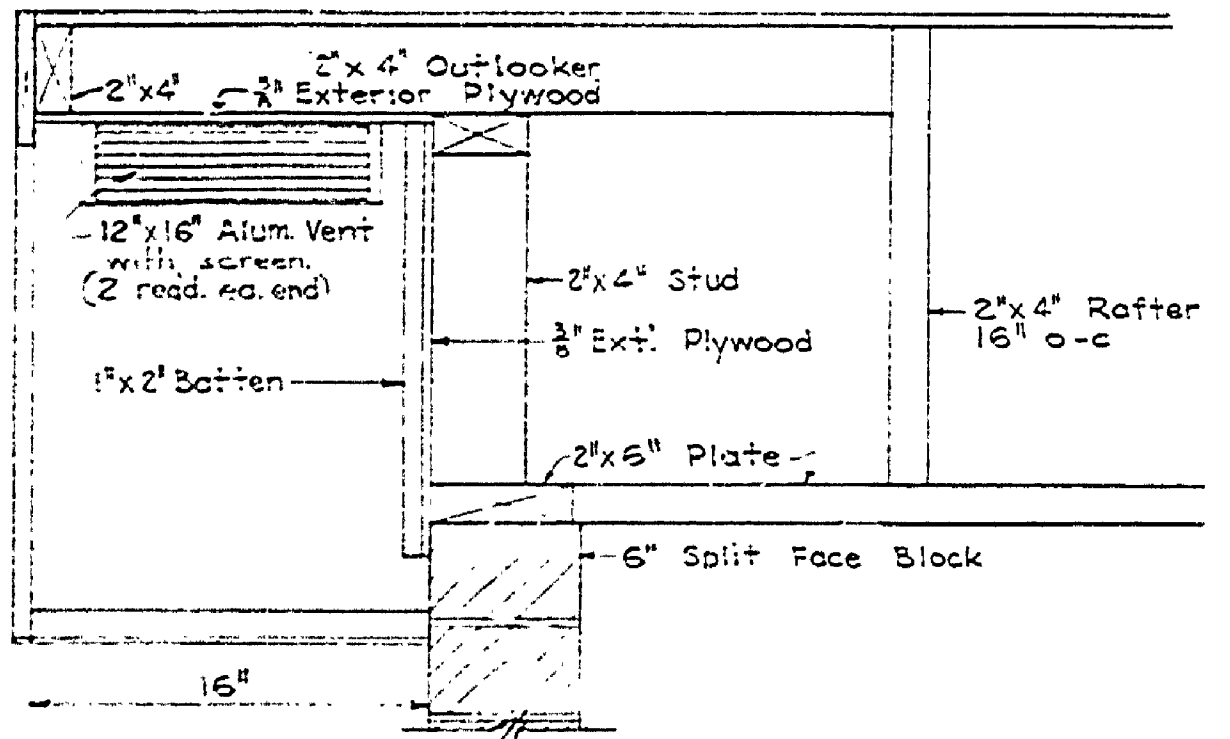
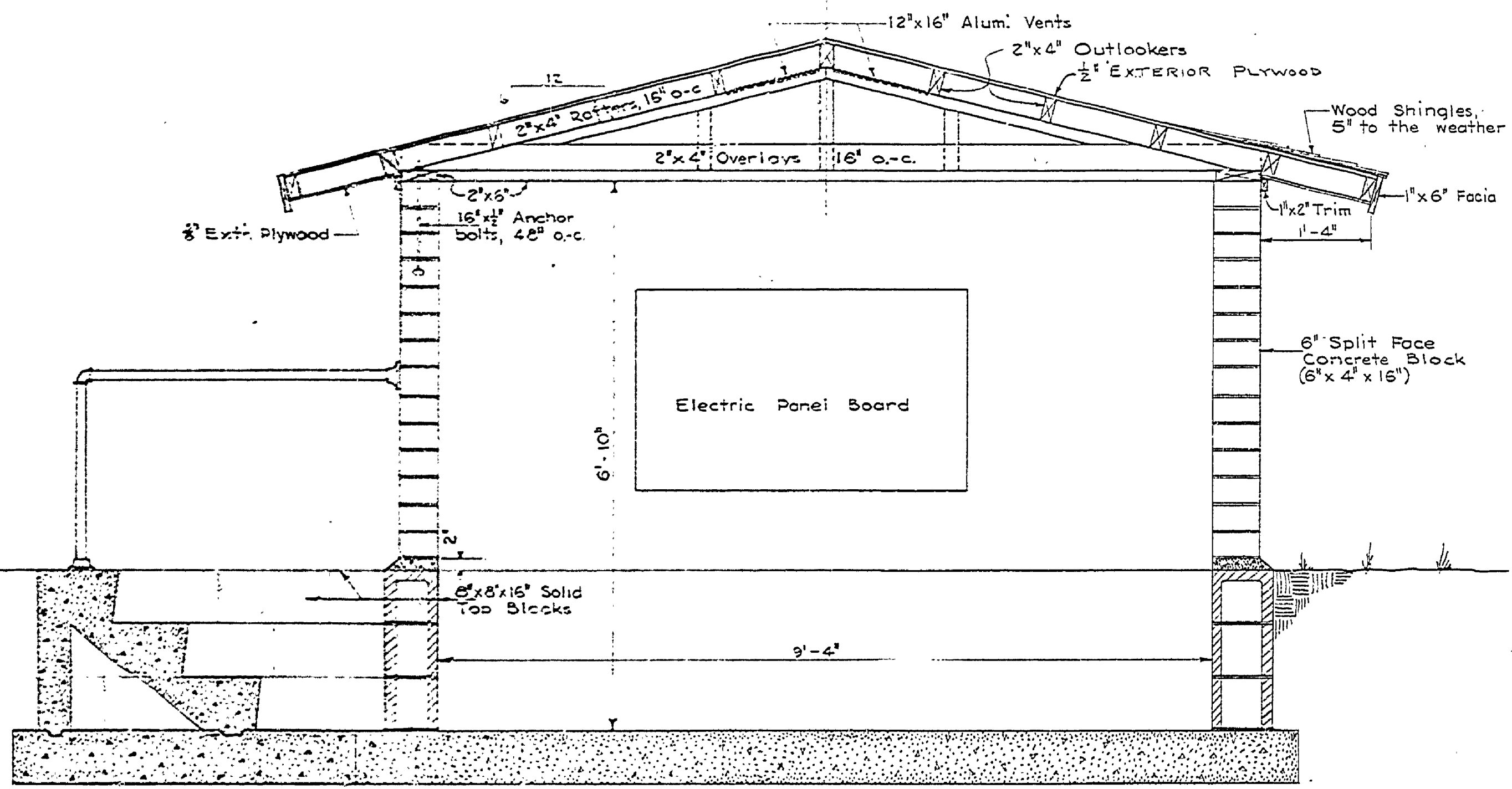


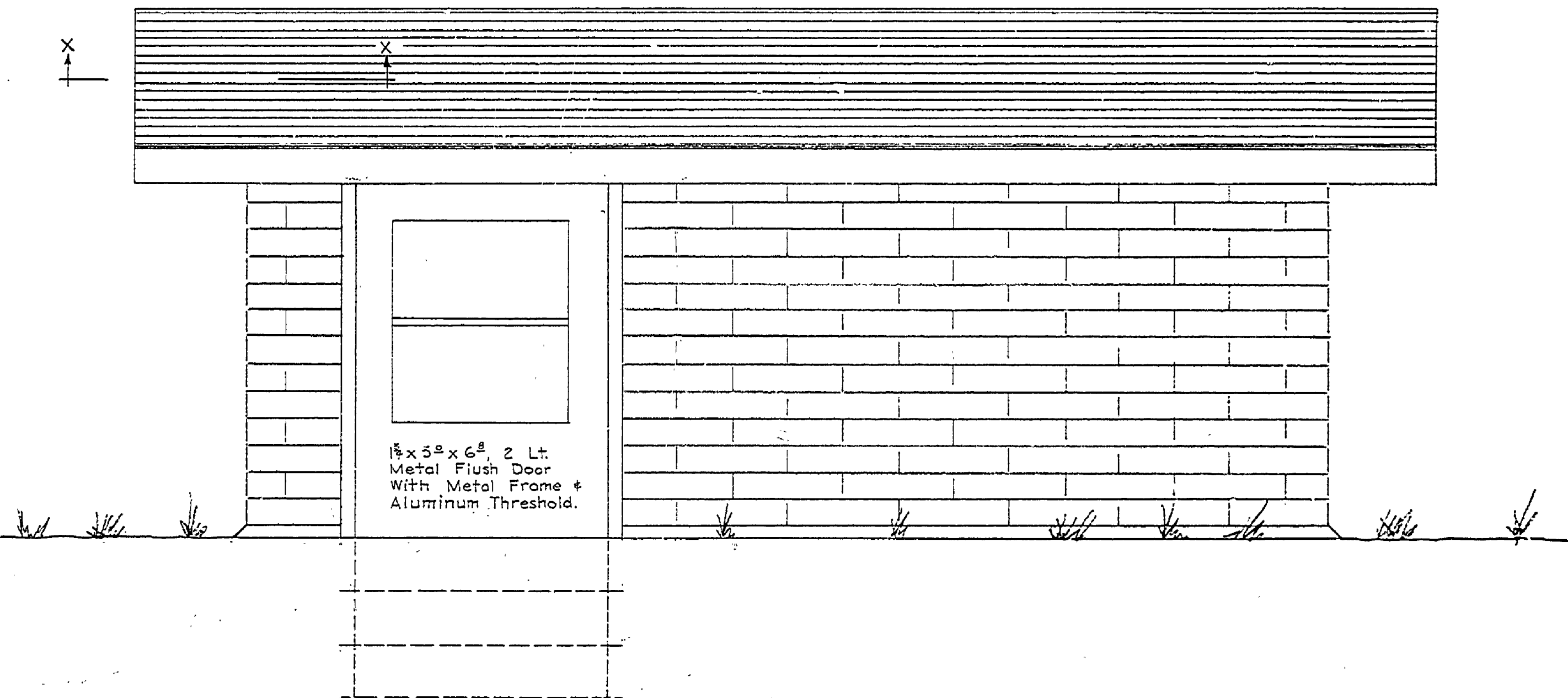
DESIGNED BY	DATE	REVIEWED	DATE	APPROVED	DATE	NO.	DATE	REVISIONS	DATE BY
G.F.D.	Feb '64	ARCHITECTURAL	1-13-64			1			
D.M.C.	Feb '64	ENGINEERING	4-64			2			
K.P.		LANDSCAPE				3	4/16/64		
								4	
								5	
								6	



SECTION X-X
1/2" = 1'-0"



SECTION A-A
1/2" = 1'-0"



SOUTH ELEVATION
1/4" = 1'-0"

MICHIGAN
DEPARTMENT OF CONSERVATION
PARKS AND RECREATION DIVISION

FORT WILKINS STATE PARK
WATER SYSTEM
PUMPHOUSE

SHEET
NO. 6
OF 7

PLAN NO.
E-106