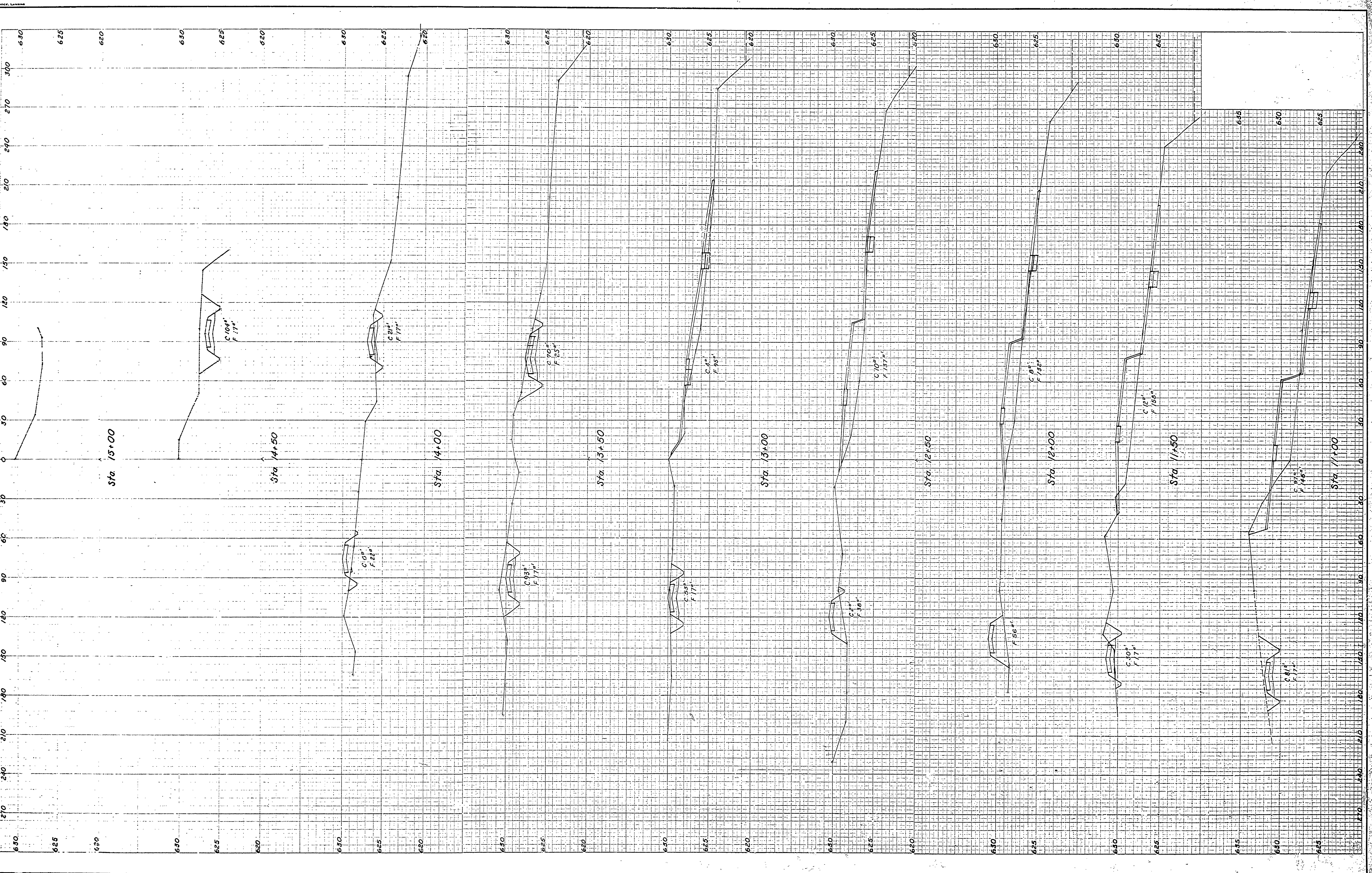


DESIGNED BY F. T. D. C.	DATE Dec. 1964	REVIEWED ARCHITECTURAL	DATE Jan. 1965	APPROVED LANDSCAPE	DATE 1	NO. 1	BY
DRAWN BY D. C.		ENGINEERING			2	2	
CHECKED BY		LANDSCAPE			3	3	
					4	4	
					5	5	
					6	6	



MICHIGAN
DEPARTMENT OF CONSERVATION
PARKS AND RECREATION DIVISION

FORT WILKINS STATE PARK
CAMPGROUND CROSS SECTIONS

SHEET
NO. 3
OF 3

PLAN NO.
FF-108