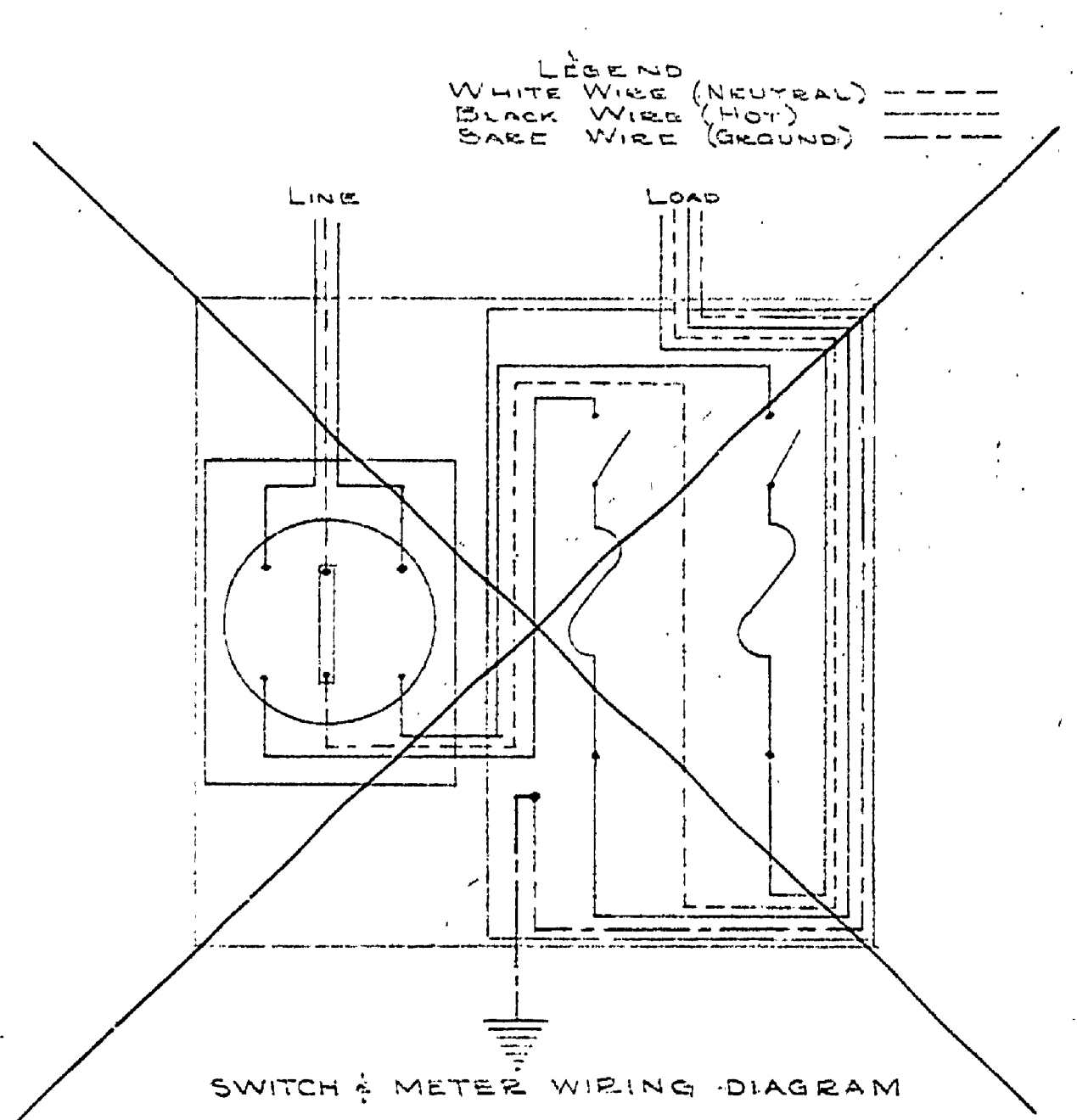
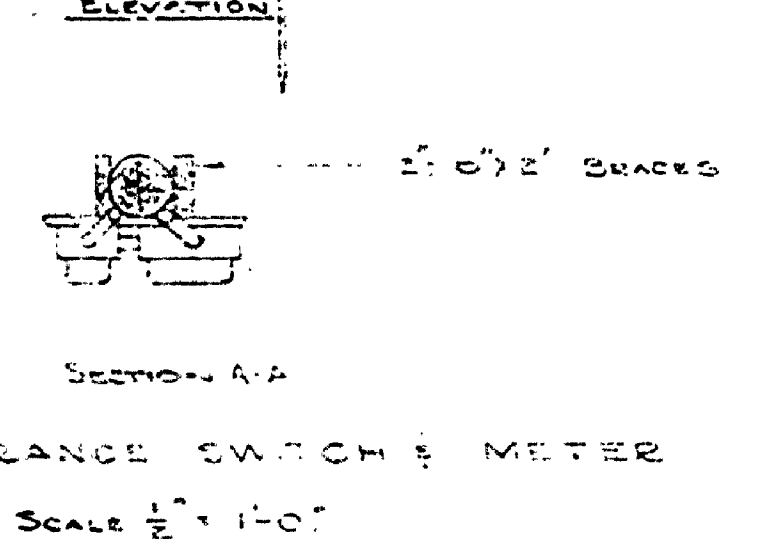
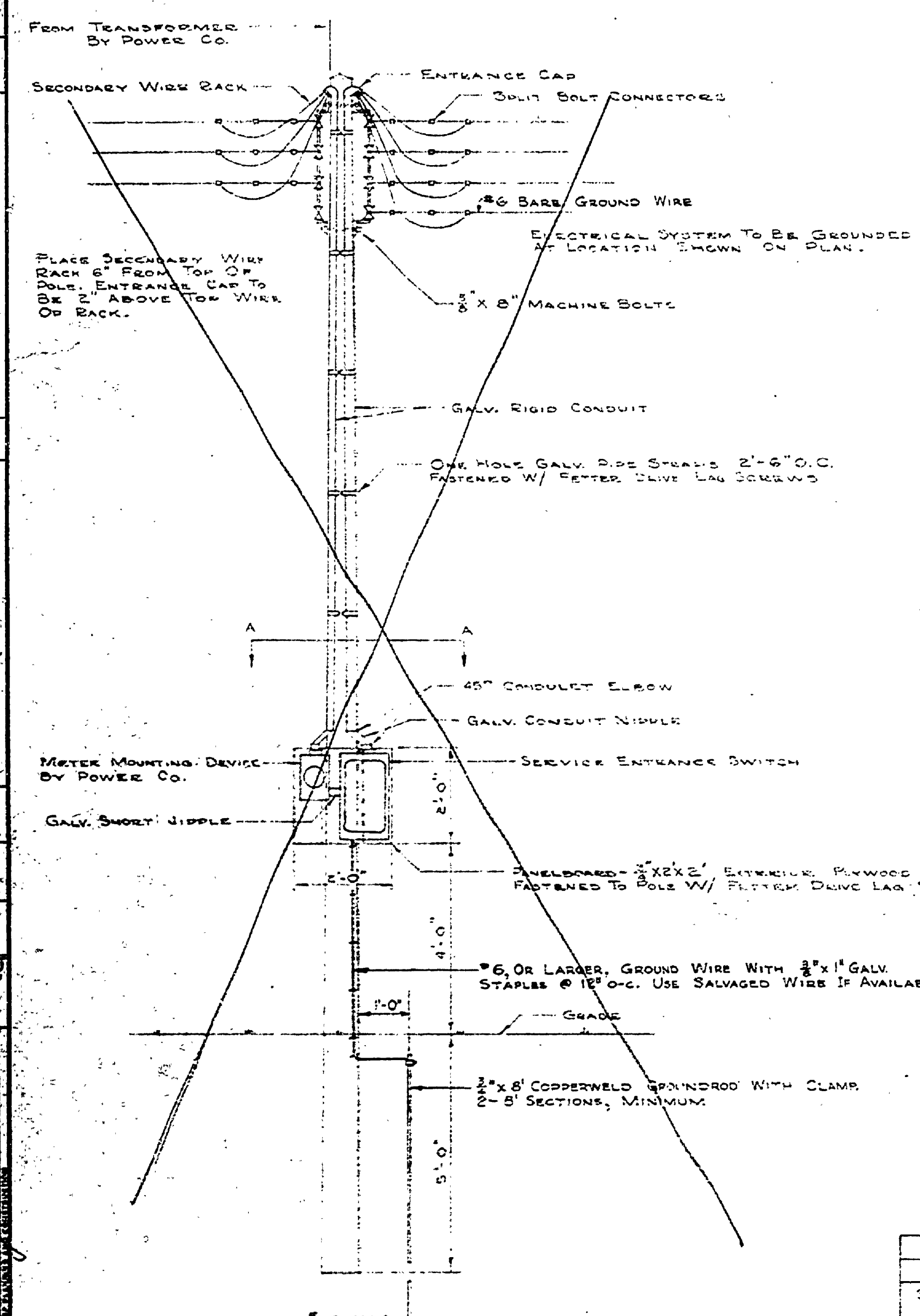
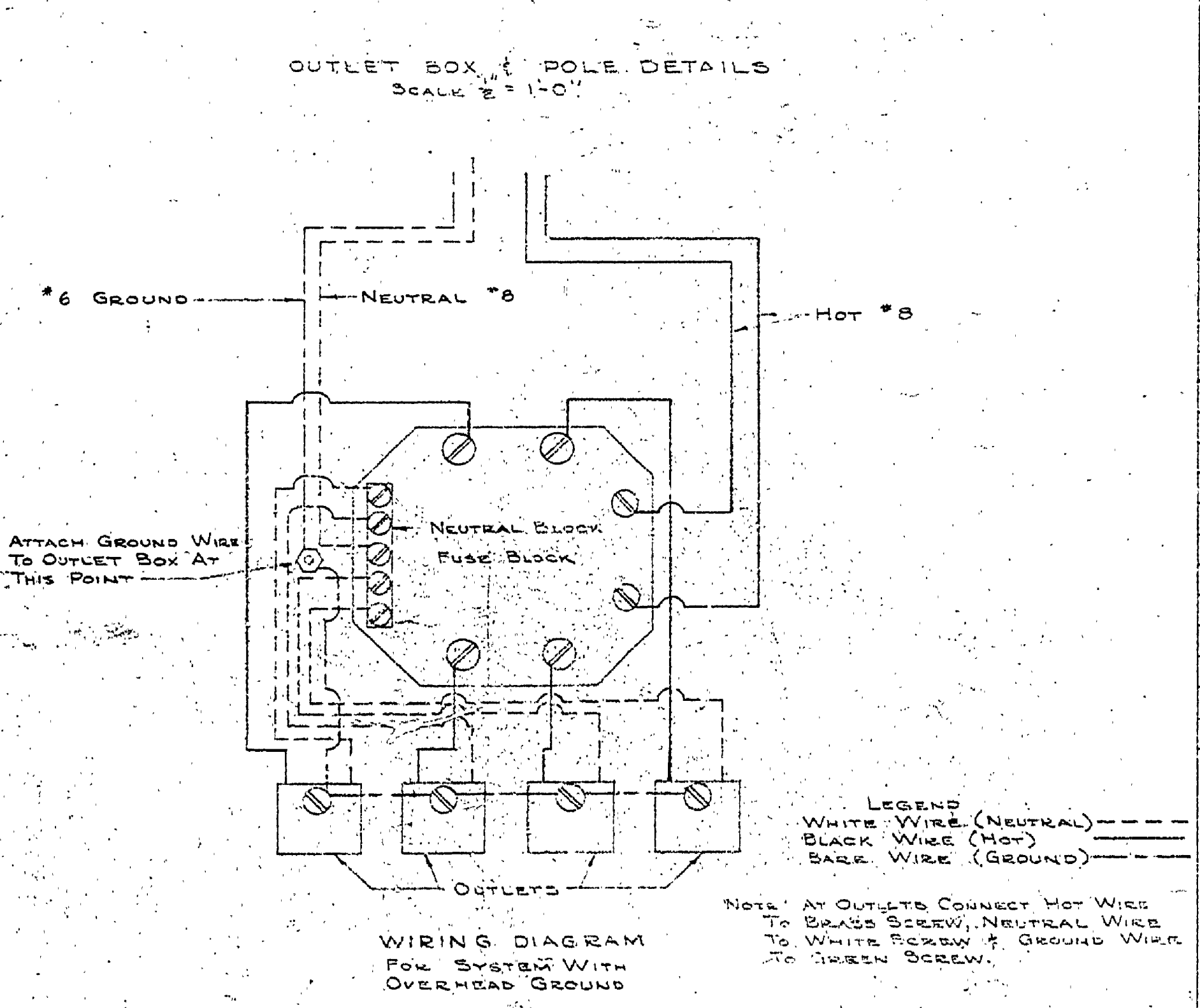
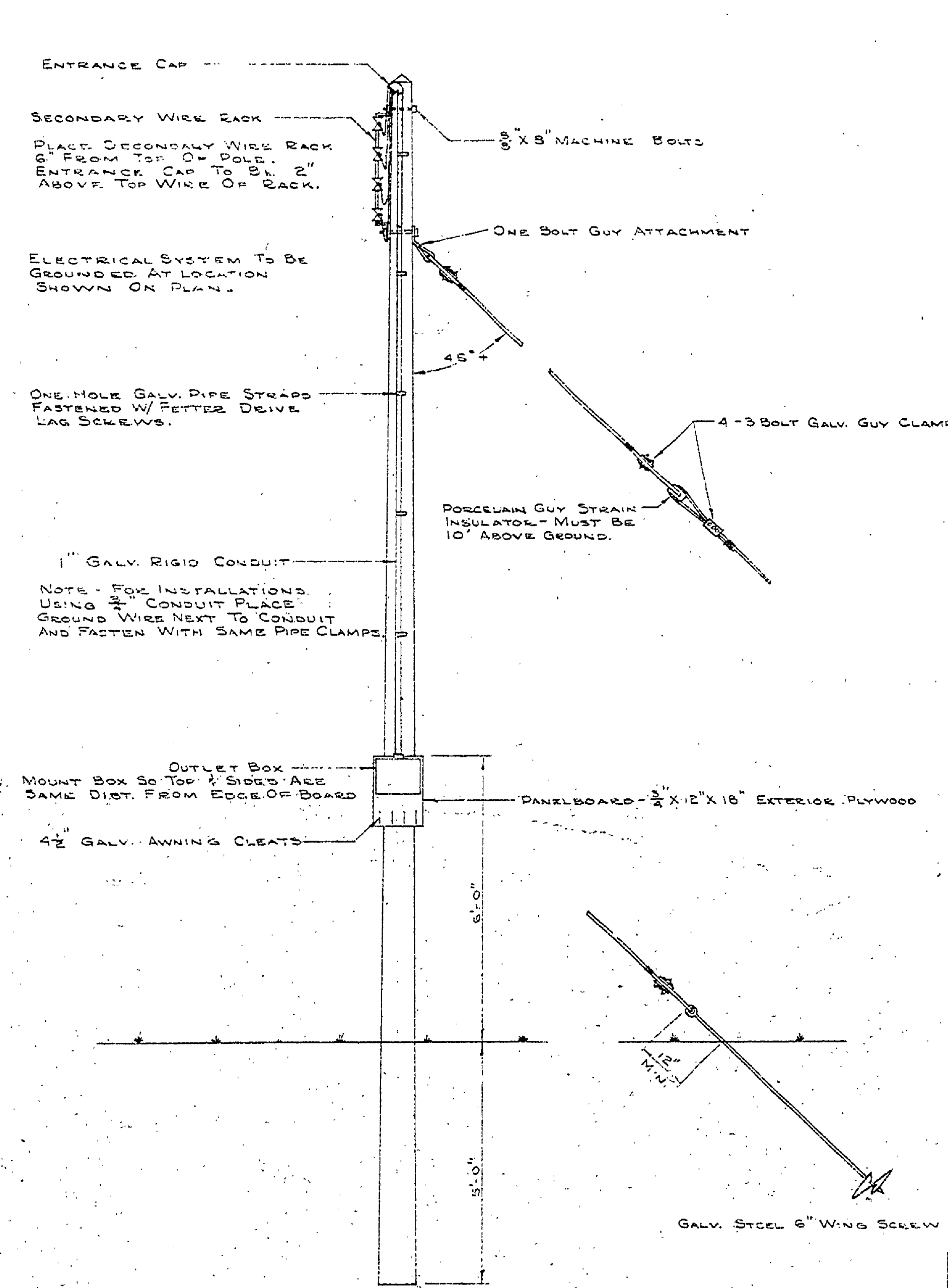


DATE: 5-10-63
 REVIEWED: J. Y.
 ARCHITECTURAL: J. Y.
 ENGINEERING: J. Y.
 LANDSCAPE: J. Y.
 DESIGNED BY: B. H.S.
 DRAWN BY: J. Y.
 CHECKED BY: J. Y.



BILL OF MATERIAL	
ITEM	QUANTITY
SERVICE ENTRANCE SWITCH-HEAVY DUTY SAFETY SWITCH 3 WIRE	100 AMP 200 AMP
3 POLE 2 FUSE S/N 240 VOLT RAINTIGHT NEMA TYPE 3	W/ 1/2\"/>
W/ COVER, INTERLOCK & PADLOCK ATTACHMENT TO LOCK SWITCH	1 IN TOP 1 IN TOP
"OFF" OR "ON" + COVER "CLOSED"	
30' CEDAR POLE W/ 5" MINIMUM TOP	1
4 SPOOL H.D. SECONDARY WIRE RACK W/ INDICATORS (8" SPACING)	2
GALV. RIGID CONDUIT	15'-40" 2'-40"
" " " " SHORT NIPPLE	1'-4" 2'-4"
" " " " NIPPLE 6" LONG	2'-1" 2'-1"
" " " " 45° ELBOW	1'-4" 1'-4"
" " " " BUSHING	1'-2" 1'-2"
" " " " LOCKNUT	1'-2" 1'-2"
" " " " ENTRANCE CAP	1'-2" 1'-2"
" " " " PIPE STRAPS ONE HOLE	1'-10" 1'-10"
FETTER DRIVE LAG SCREW 3/8 X 2 1/2	16
TYPE THW STR. DB CU. WIRE	150' #2 165' #6
3/8 X 8 MACHINE BOLT + WASHERS	2
SPLIT BOLT CONNECTOR	6'-2" 6'-2" 2'-2" 5'-2"
PANELBOARD - 2 X 2 X 2 EXTERIOR PLYWOOD	1
#6 STR. BARE CU. WIRE	25
Groundrod - 3/8 X 8' COPPERWELD SECTIONAL ROD, OLIVER #729448	2, 8' SECT'S (MIN)
Ground Wire Clamp, 3/8" (SAFETY SET SCREW), OLIVER #9964	1 ea.
3/8" DRIVING STUD, OLIVER #729535	1 ea.
3/8" BRONZE COUPLING, OLIVER #79535	2 (MINIMUM)



BILL OF MATERIAL	
ITEM	QUANTITY
TRAILER OUTLET BOX W/ 1" HUB IN TOP	1
25' CEDAR POLE W/ 5" MINIMUM TOP	1
#8 SOLID WIRE (IN CONDUIT) WHITE	20
" " " " BLACK	40
1" GALV. RIGID CONDUIT	15'-0"
1" " " " ENTRANCE CAP	1
1" " " " PIPE STRAPS (1 HOLE)	5
4 SPOOL H.D. SECONDARY WIRE RACK W/ INDICATORS (8" SPACING)	1
SPLIT BOLT CONNECTORS (SIZE PER PLAN)	4
3/8 X 8" MACHINE BOLT	2
GALV. STEEL ROUND WASHER FOR 3/8" BOLT	4
2 X 2 1/2" FETTER DRIVE LAG SCREW	8
4" GALV. STEEL LINE CLEATS	4
3/8 X 8 NICKEL PLATED OVAL HEAD WOOD SCREWS	11
PANELBOARD - 2 X 2 X 2 EXTERIOR PLYWOOD	1
#8 STR. BARE CU. WIRE	20
GUY MATERIAL	
3/8" STANDED GUY WIRE - DOUBLE GALV.	32
4-3 BOLT GALV. GUY CLAMPS	4
4" PORCELAIN GUY STRAIN INSULATOR	1
1" BOLT GALV. GUY ATTACHMENT	1
6" GALV. STEEL WING SCREW ANCHOR	1

MICHIGAN
 DEPARTMENT OF CONSERVATION
 PARKS AND RECREATION DIVISION

STANDARD PLAN
 SERVICE ENTRANCE SWITCH
 AND OUTLET BOX

SHEET NO. 2 OF 3
 PLAN NO. E-109

FT. WILKINS STATE PARK