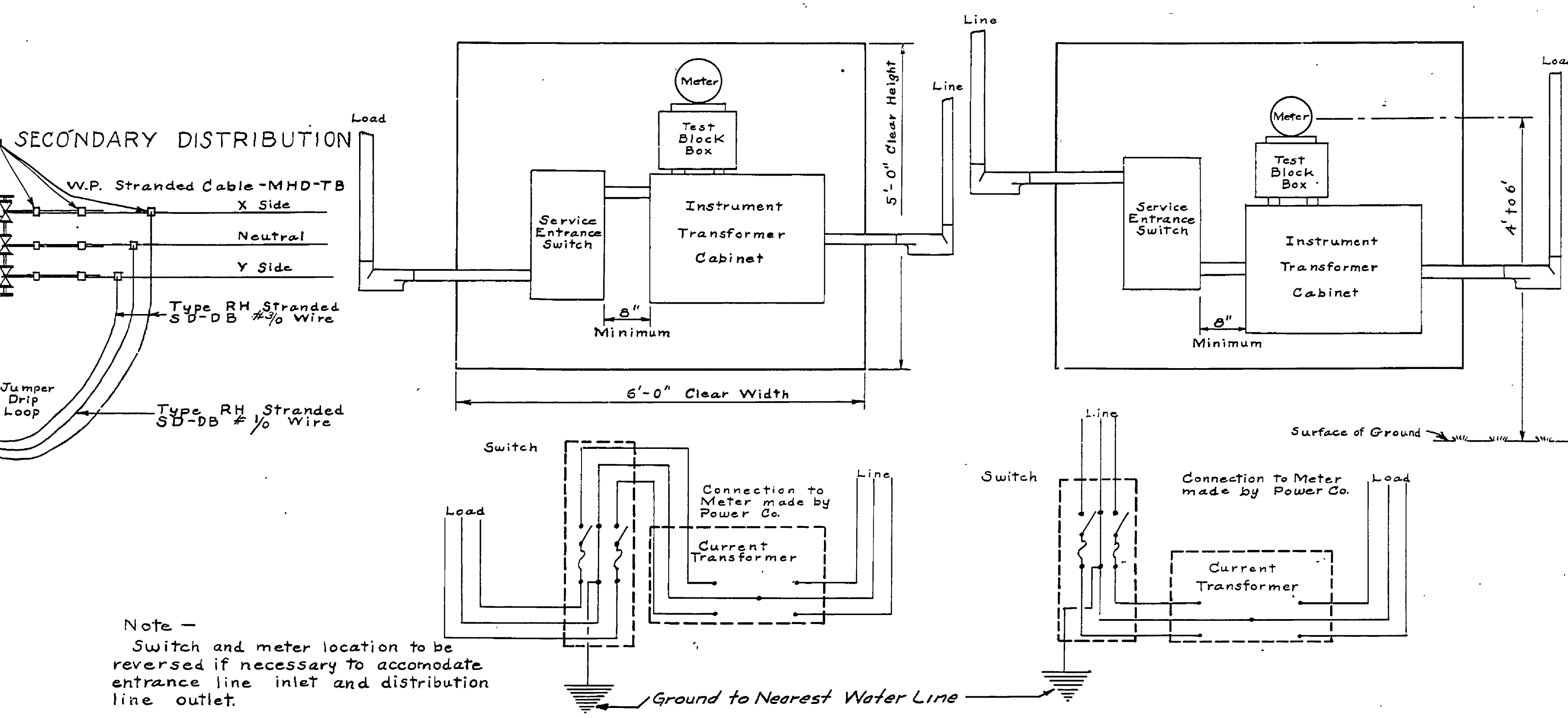
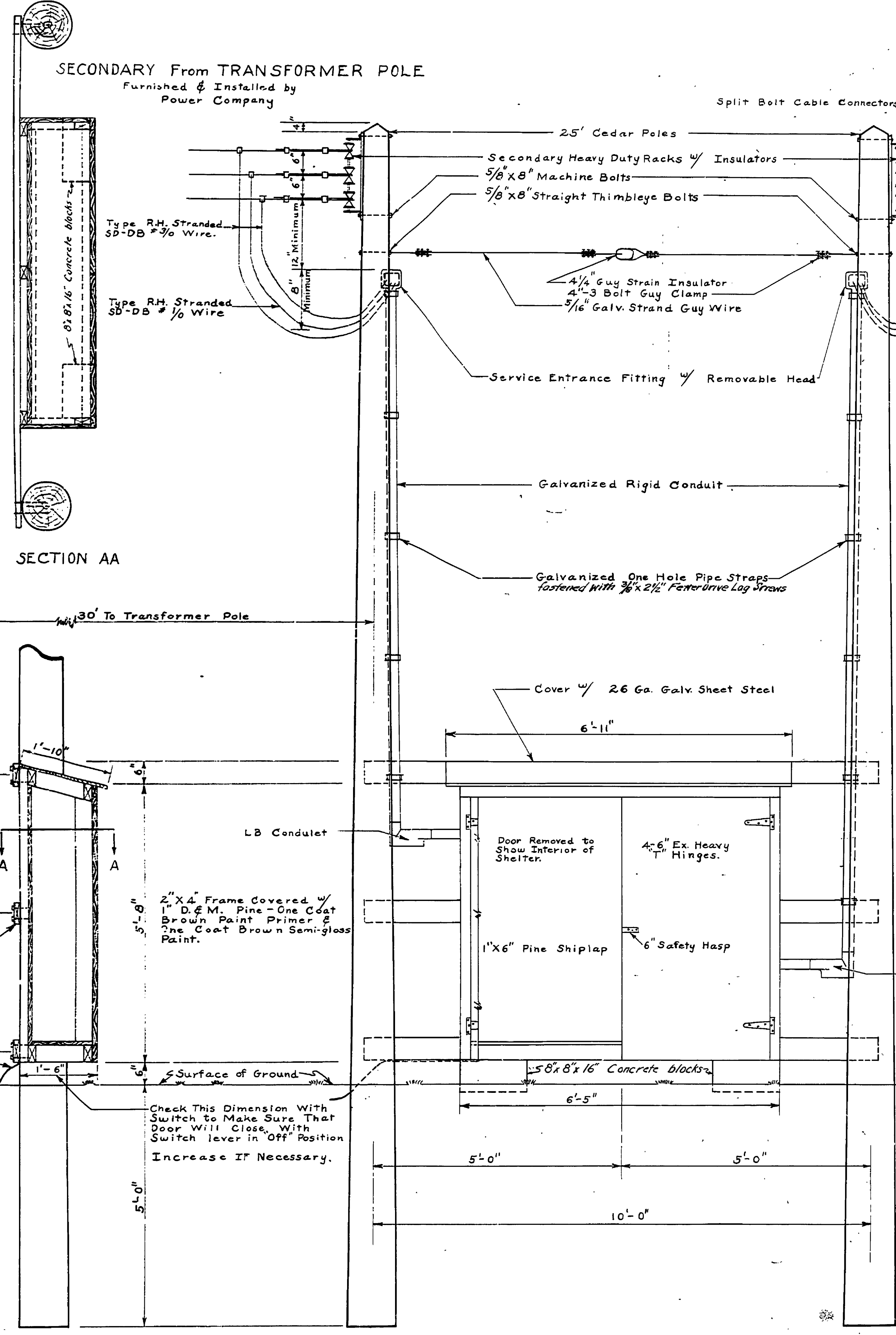


| | | | | | | |
|----------------------|---------------|-------------|-----------|----|-------------|------|
| DATE BY | REVISIONS | NO. | DATE | BY | APPROVED BY | DATE |
| | 4 | 1 | | | | |
| | 5 | 2 | | | | |
| | 6 | 3 | | | | |
| REVIEWED BY SECTIONS | ARCHITECTURAL | ENGINEERING | LANDSCAPE | | | |
| NDH. | | | | | | |
| DRAWN BY | CHECKED BY | DATE | | | | |
| | | 1/17/57 | | | | |



Note -
Switch and meter location to be reversed if necessary to accommodate entrance line inlet and distribution line outlet.

Meter Test Block Box and Instrument Transformer Cabinet to be Furnished by Power Co. and Installed by State.

Switch, Meter & Wiring Diagram
Scale: 3/4" = 1'-0"

| MATERIAL SCHEDULE | | ENTRANCE SWITCH AMPERE RATING | 200 AMPS |
|----------------------------------|--|---|--|
| LOCATION | ITEM | QUANTITY | SIZE |
| ENTRANCE SWITCH | Galv. Rigid Conduit | 30'-2" | |
| | " " " Condulet | 2-2" | LB. & Cover & Gasket. |
| | " " " Bushings | 4-2" | |
| | " " " Locknuts | 4-2" | |
| | " " " Entrance Caps | 2-2" | 3 Wire |
| | Galv. Mail Iron One Hole Pipe Straps | 12 | |
| | Type RH. Stranded-SD-DB Copper Wire | 100' | #3/0 |
| | " " " " " | 50' | #16 |
| | Secondary Racks - Heavy Duty | 13 Lines | Spacing & Insulators for #2 to #8 |
| | Galv. Mach. Bolts & Nuts & Washers | 2-3/8" X 8" | |
| Galv. Thimble St. Bolt & Washers | 2-3/8" X 8" | | |
| Galv. Guy Clamps | 4-4" | 3 Bolt | |
| SWITCH-METER-LOOP | Galv. Stranded Guy Wire | 14- | #16 |
| | Porcelain Guy Strain Insulator | 1- | 4 1/4" |
| | Split Bolt Cable Connectors | 4- | For #3/0 Stranded |
| | " " " | 2- | For #16 Stranded |
| | Copper Bearing Drive Head Ground Rod & Clamp | 1- | 3/8" X 8" |
| ENTRANCE SWITCH | Bare Copper Ground Wire SD. | 6' | #6 Stranded (Salvaged) |
| | Galv. Staples (for fastening Gd. Wire) | 6- | 3/16" X 1 1/2" |
| LUMBER | | 3-2" X 6" X 12' | Pine S4S. |
| | | 3-2" X 4" X 12' | Pine S4S. |
| | | 4-2" X 4" X 8' | |
| | | 19-1" X 8" X 8' | 1.49 Bd. Ft. D. & M. |
| | | 6-1" X 8" X 12' | |
| SWITCH-METER-SHELTER | HARDWARE | | 4-Ex. Hy. 6" T. Hinges w/ 1/4" Screws. |
| | | | 1-6" Safety Hasp w/ 3/4" Wood Screws. |
| | | | 12-3/8" X 5" Lag Screws. |
| | | | 1 Pc. - 26 Ga. Galv. Steel - 2'-0" X 7'-1" |
| | | | 1 Lb. - 20 d. Common Nails. |
| PAINT | | 2- 8' X 8' X 16' Concrete Blocks | |
| | | 1 Qt - Exterior Brown Paint Primer. | |
| CEDAR POLES | | 1 Qt - Exterior Brown Semi-gloss Paint. | |
| | | 2- 25' Long. | |

SWITCH & METER SHELTER 200 AMPERE SWITCH
Scale: 3/4" = 1'-0"