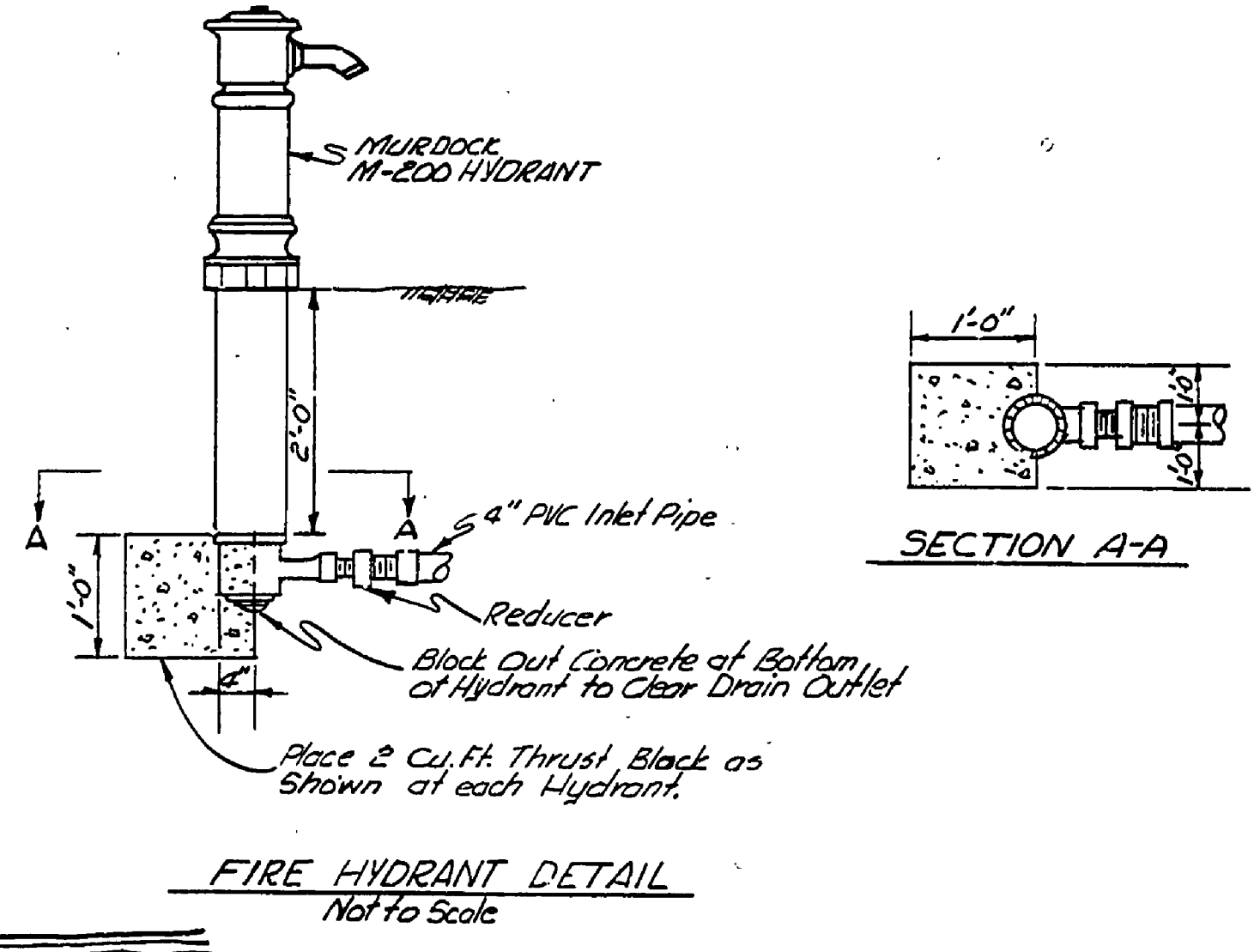


- NOTES:**
1. Fire Hydrants to be Murdock M-200 Furnished With 2 1/2" Inlet & Outlet and Equipped For 2" Bury.
 2. The layout of the Lawn Sprinkling System on this sheet is the same as indicated on sheet #1. Refer to that Plan For Lawn Sprinkling Layout Details.
 3. The Fire System is Designed to Provide Two Fire Streams of 100 GPM Each With 50 PSI At the Nozzle Boss.



LAKE FANNY HOOE

FIRE PROTECTION SYSTEM PLAN

SCALE: 1" = 20'

FOR REFERENCE ONLY

- LEGEND**
- PROPOSED LAWN SPRINKLER LINE & HEAD — 2" LS — ○
 - PROPOSED FIRE LINE & HYDRANT — 4" FP — ●
 - CONCRETE THRUST BLOCKS — ■

SURVEYED BY	DRAWN BY LEMMON	4-70	NO. DATE BY	REVISIONS	NO. DATE BY	REVISIONS	MICHIGAN DEPARTMENT OF NATURAL RESOURCES	PLAN OF WATER DISTRIBUTION SHEET TITLE	FT. WILKINS STATE PARK AREA OR PARK LAWN SPRINKLER SYSTEM PROJECT & FIRE PROTECTION	PROJECT NO. 110-75-2499-084	SHEET 2 OF 2	PLAN NO. E-110-A
DESIGNED BY R. HAEUSLER	CHECKED BY	DATE	1.		3.							
			2.		4.							