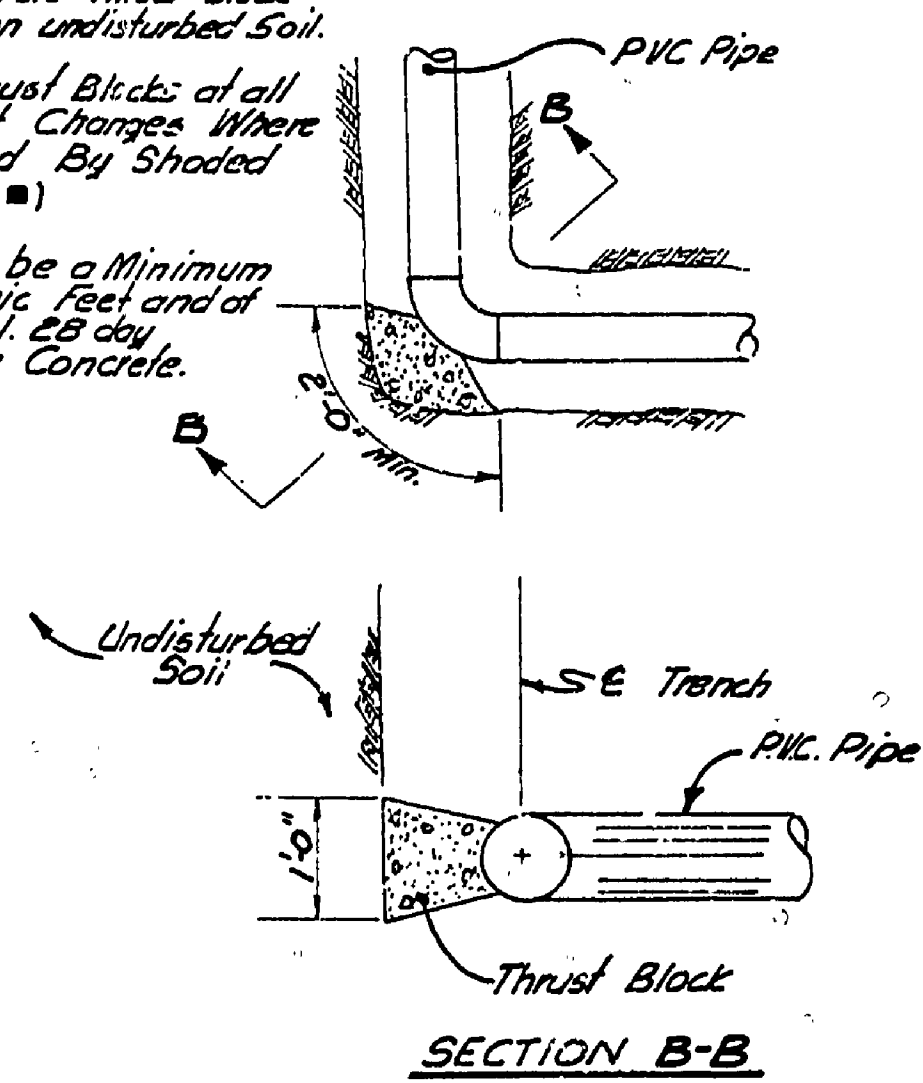


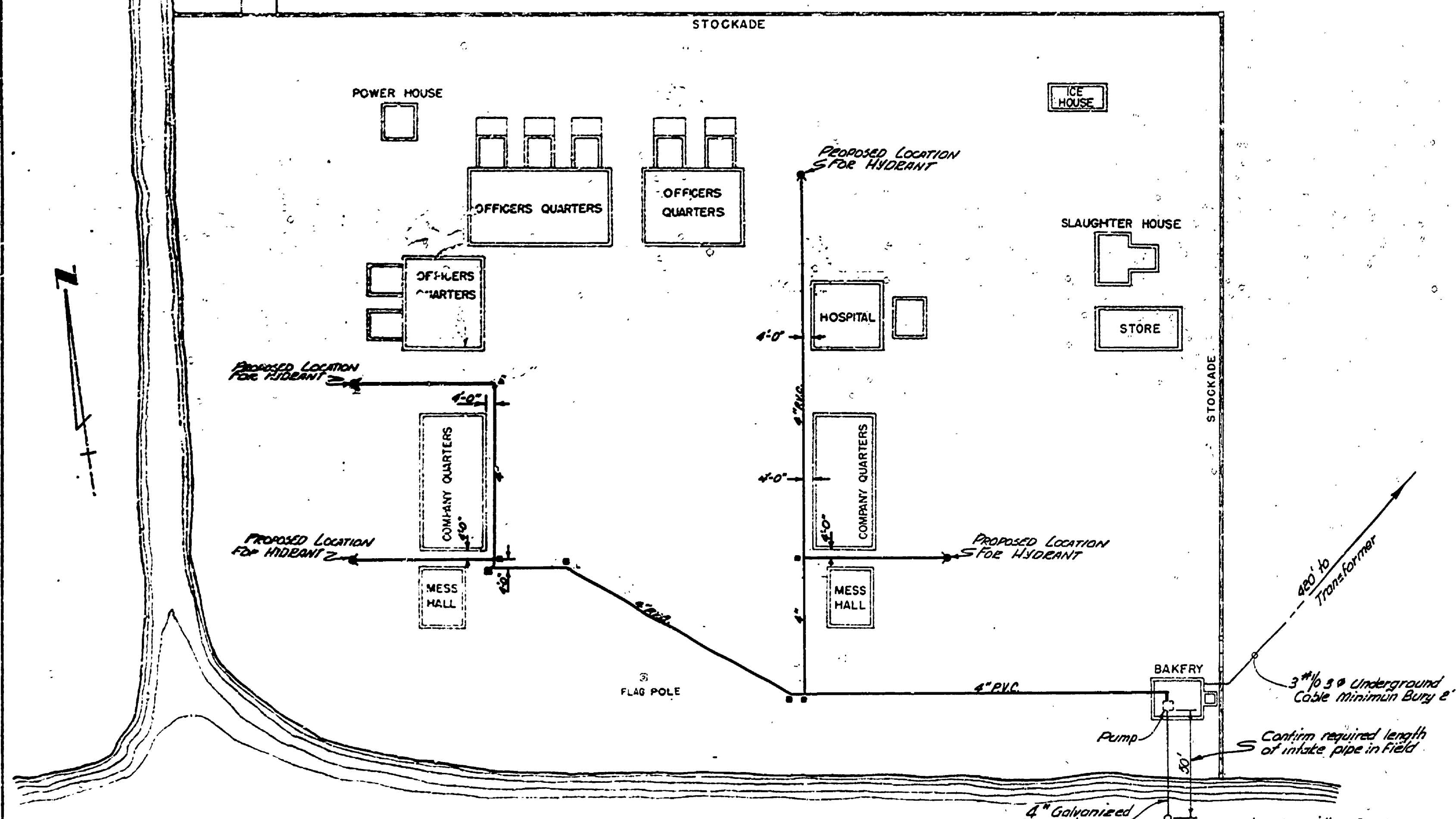
SCHMATIC DIAGRAM OF PIPING AT PUMP

- NOTES:**
1. Pour Concrete Thrust Block To Bear on undisturbed Soil.
 2. Place Thrust Blocks at all Alignment Changes Where Indicated By Shaded Squares (■).
 3. Blocks to be a minimum 1.5 cubic feet and of 3000 P.S.I. 28 day strength concrete.



THRUST BLOCK DETAILS

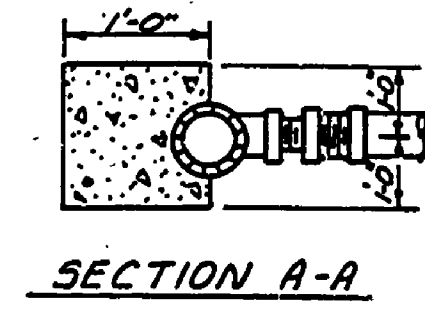
- NOTES:**
1. The Pump Shall be Installed in the Basement of the old Bakery
 2. Before Beginning Construction Field Check Depth of Soil along Proposed Fire Main. If 4'-0" Depth Exists Along Most of Line Bury Main at this Depth. Otherwise place Line at 2'-0" Depth and Draining during non use periods in the winter.
 3. Underground Piping Except as Noted Shall be 125 PSI PVC Irrigation Pipe.
 4. Motor Starter to be Square D Class B39 Type 50A 2 1/2 HP 208/240 Volt 3 Ph. 50 Cycle Nema Type 1 Enclosure Ref. Form A (Start-Stop Push Button)
 5. Pump to be Deming Unit M-27, Size 2, Mech Seal, Drip Proof Motor 3500 RPM, 1 1/2 HP, 3 Ph, Fig. 4211-25
 6. Fire Hydrants to be Muddock M-200, Furnished with 2 1/2" Inlet and Outlet and Designed for Either 4' or 2' Depth of Bury as Decided by Field Check.
 7. This Fire System is Designed to Provide two Fire Streams of 100 G.P.M. each with 50 P.S.I. at Nozzle Base



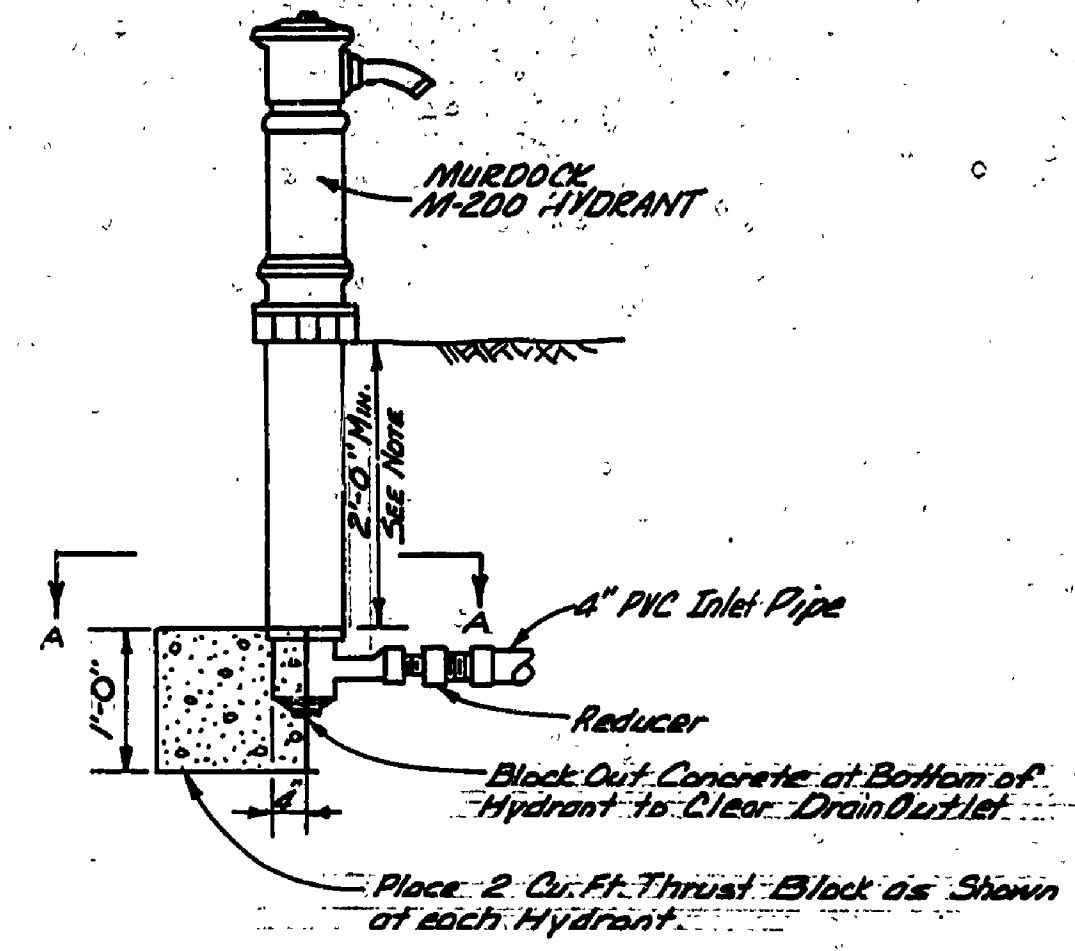
FIRE PROTECTION SYSTEM PLAN

LAKE FANNY HOOE

1" = 40'



SECTION A-A



FIRE HYDRANT DETAIL

LEGEND

Proposed Fire Line and Hydrant. One Thrust Block

BUILDING COMMITTEE APPROVAL	
BY: _____	DATE: _____
RECOMMENDED FOR APPROVAL <i>J.S. Pender</i> 2-18-71	
RECOMMENDED FOR APPROVAL <i>S. P. Pottel</i> 2-18-71	
DIVISION REGION APPROVAL	
BY: <i>Paul R. Pender</i>	2/19/71
APPROVED: <i>H.C. Knice</i> 2-19-71	

SURVEYED BY	DRAWN BY LEMMON	12-69	NO. DATE BY	REVISIONS	NO. DATE BY	REVISIONS
DESIGNED BY R. HAEUSLER	12-69	CHECKED BY	1. 2/7/71 RCL	FIRE PROTECTION ONLY	3.	
DATE		DATE	2.		4.	

MICHIGAN DEPARTMENT OF NATURAL RESOURCES

PLAN & DETAILS SHEET TITLE

FT WILKINS STATE PARK AREA OR PARK FIRE PROTECTION SYSTEM PROJECT

PROJECT NO. 110-75-2499-085 24-0264 SHEET 1 OF 1 PLAN NO. E-110