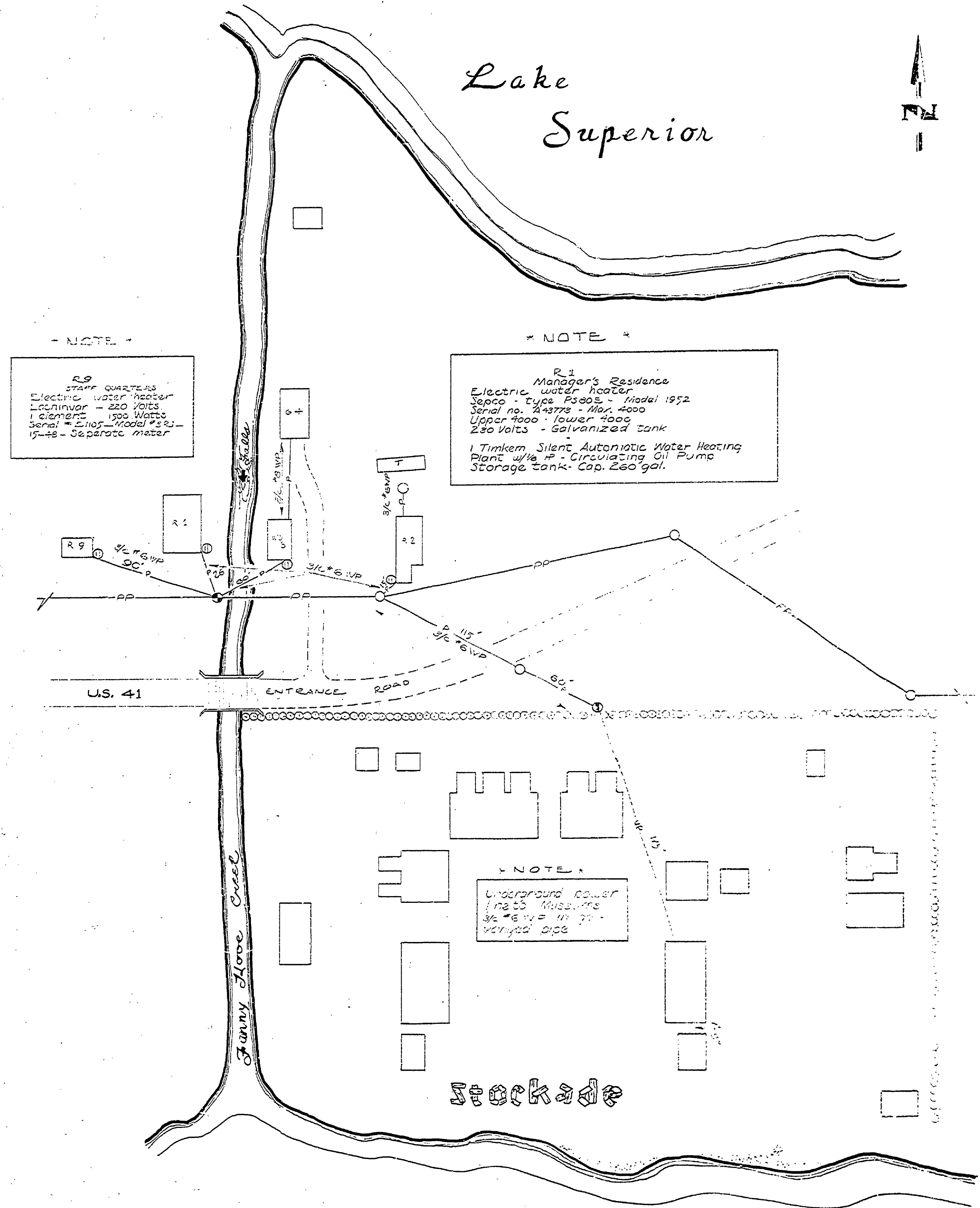


DESIGNED BY	DATE	REVIEWED	DATE	APPROVED	DATE	NO.	DATE	BY
DRAWN BY	3-1-61	ARCHITECTURAL				1		
CHECKED BY		ENGINEERING				2		
		LANDSCAPE				3		
						4		
						5		
						6		



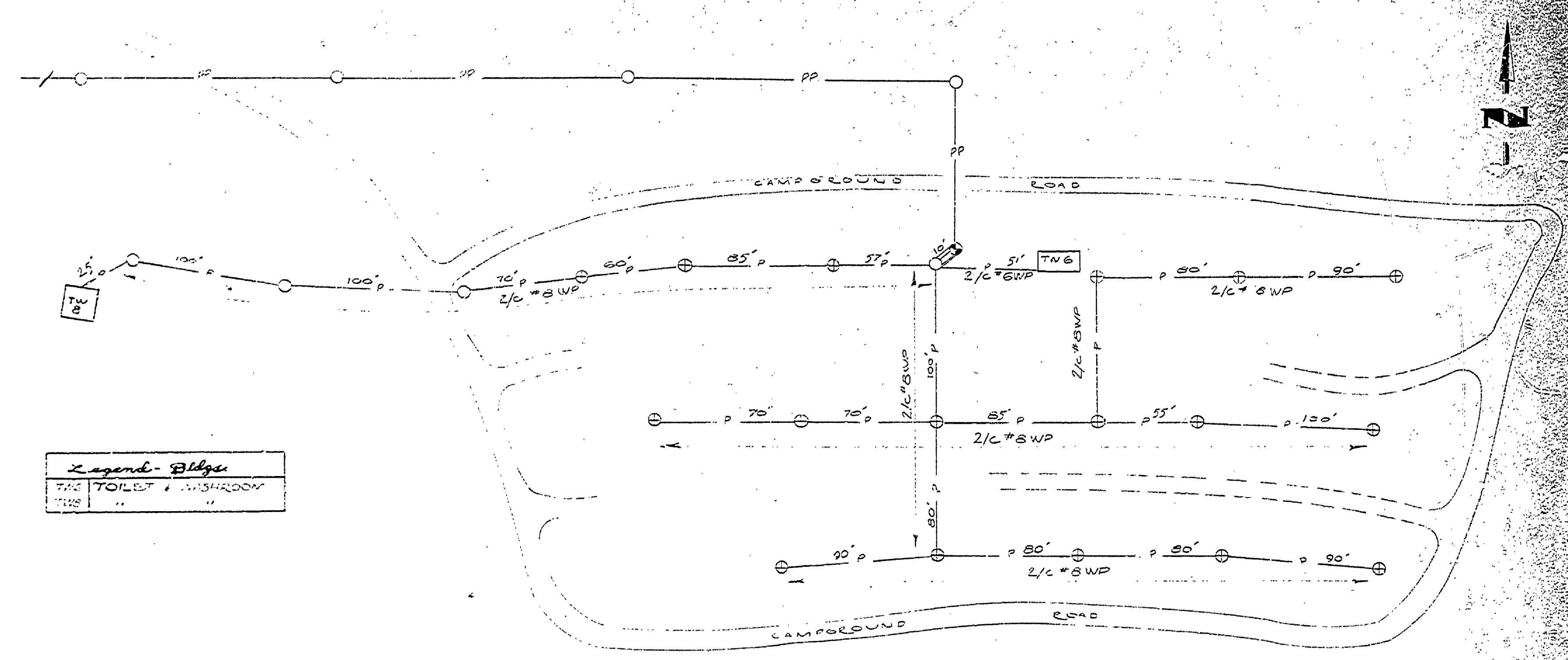
*** NOTE ***
 R2 STAFF QUARTERS
 Electric water heater
 Lectinivar - 220 Volts
 1 element - 1500 Watts
 Serial # 24377 - Mar. 4000
 15-58 - Separate meter

*** NOTE ***
 R1 Manager's Residence
 Electric water heater
 Sepco - type P5005 - Model 1952
 Serial no. 24377 - Mar. 4000
 Upper 4000 - lower 4000
 220 Volts - Galvanized tank
 1 Timken Silent Automatic Water Heating
 Plant w/6 P - Circulating Oil Pump
 Storage tank - Cap. 250 gal.

*** NOTE ***
 Underground power
 lines installed
 3/4" #14 in 2"
 covered pipe

Legend
 PP PUBLIC POWER LINE
 P PARK POWER LINE
 UG UNDERGROUND POWER LINE
 O UTILITY POLE
 T W/ TRANSFORMER
 M ELECTRIC METER
 M/M ELECTRIC METER & OUTLET
 S ELECTRIC METER

Legend - Bldgs.
 R1 MANAGER'S RESIDENCE
 R2 RESIDENCE
 R3 STAFF QUARTERS
 G GARAGE
 W WORKSHOP
 T TRAILER
 C STORAGE



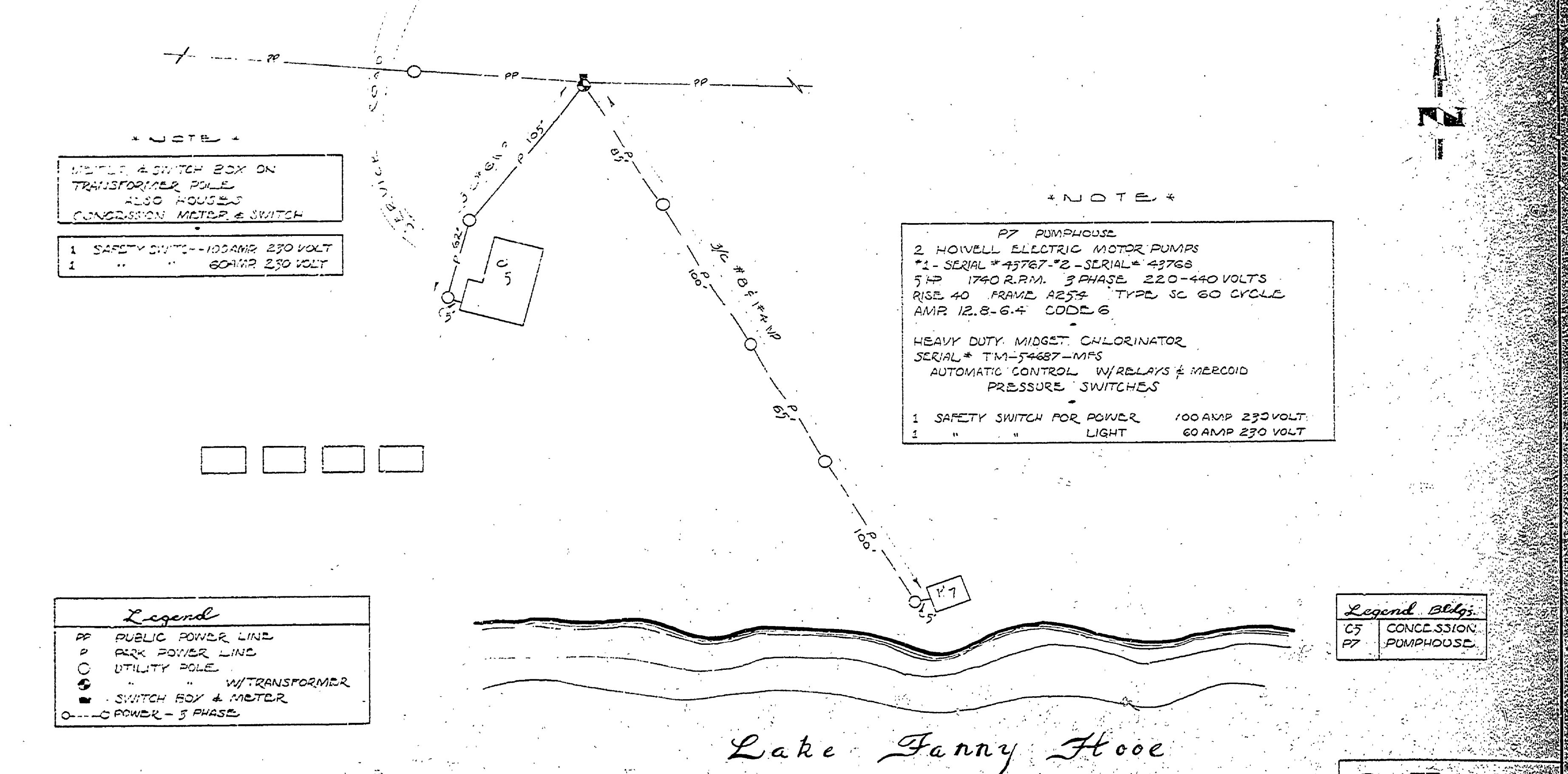
Legend - Bldgs.
 T TOILET & WASHROOM
 M METER

Legend
 PP PUBLIC POWER LINE
 P PARK POWER LINE
 O UTILITY POLE
 T W/ TRANSFORMER
 M ELECTRIC METER
 M/M ELECTRIC METER & OUTLET
 S ELECTRIC METER

*** NOTE ***
 SAFETY SWITCH & METER SHALTER 5'x8'
 SAFETY SWITCH 200 AMP FROM TRANSFORMER INTO AND OUT
 OF METER BOX - 3-22 600V STRANDED CABLE
 110 VOLT CIRCUITS DISTRIBUTED THRU CAMPGROUND

MICH. DEPT. OF CONSERVATION EAST SIDE
 FORT WILKINS STATE PARK ELECTRICAL DISTRIBUTION

PLATE NO. 2
 DWNG BY W.W.L.
 SCALE 1"=50'-0"



*** NOTE ***
 METER & SWITCH BOX ON
 TRANSFORMER POLE
 ALSO HOUSES
 CONDENSER METER & SWITCH
 1 SAFETY SWITCH - 100 AMP 230 VOLT
 1 " " " 60 AMP 230 VOLT

Legend
 PP PUBLIC POWER LINE
 P PARK POWER LINE
 O UTILITY POLE
 T W/ TRANSFORMER
 M ELECTRIC METER
 M/M ELECTRIC METER & OUTLET
 S ELECTRIC METER

*** NOTE ***
 P7 PUMPHOUSE
 2 HOWELL ELECTRIC MOTOR PUMPS
 #1 - SERIAL # 43767 - #2 - SERIAL # 43768
 5 HP 1740 R.P.M. 3 PHASE 220-440 VOLTS
 RISE 40 FRAME A252 TYPE 3C 60 CYCLE
 AMR 12.8-6.4 00006
 HEAVY DUTY MIDGET CHLORINATOR
 SERIAL # T14-5687-10MS
 AUTOMATIC CONTROL W/RELAYS & MERCURIO
 PRESSURE SWITCHES
 1 SAFETY SWITCH FOR POWER 100 AMP 230 VOLT
 1 " " " LIGHT 60 AMP 230 VOLT

Legend - Bldgs.
 C5 CONCESSION
 P7 PUMPHOUSE

MICH. DEPT. OF CONSERVATION CENTRAL SECTION
 FORT WILKINS STATE PARK ELECTRICAL DISTRIBUTION

MICHIGAN DEPARTMENT OF CONSERVATION PARKS AND RECREATION DIVISION
 FORT WILKINS STATE PARK UTILITY MAP ELECTRICAL DISTRIBUTION SYSTEM
 SHEET NO. 2 OF 2
 PLAN NO. U-1

PLATE NO. 3
 DWNG BY W.W.L.
 SCALE 1"=50'-0"