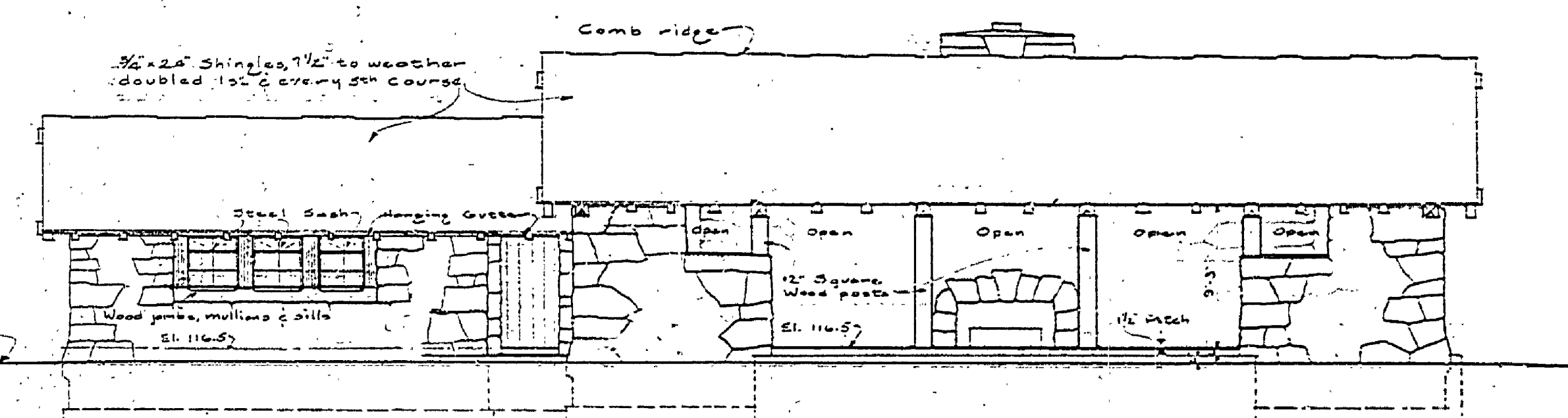
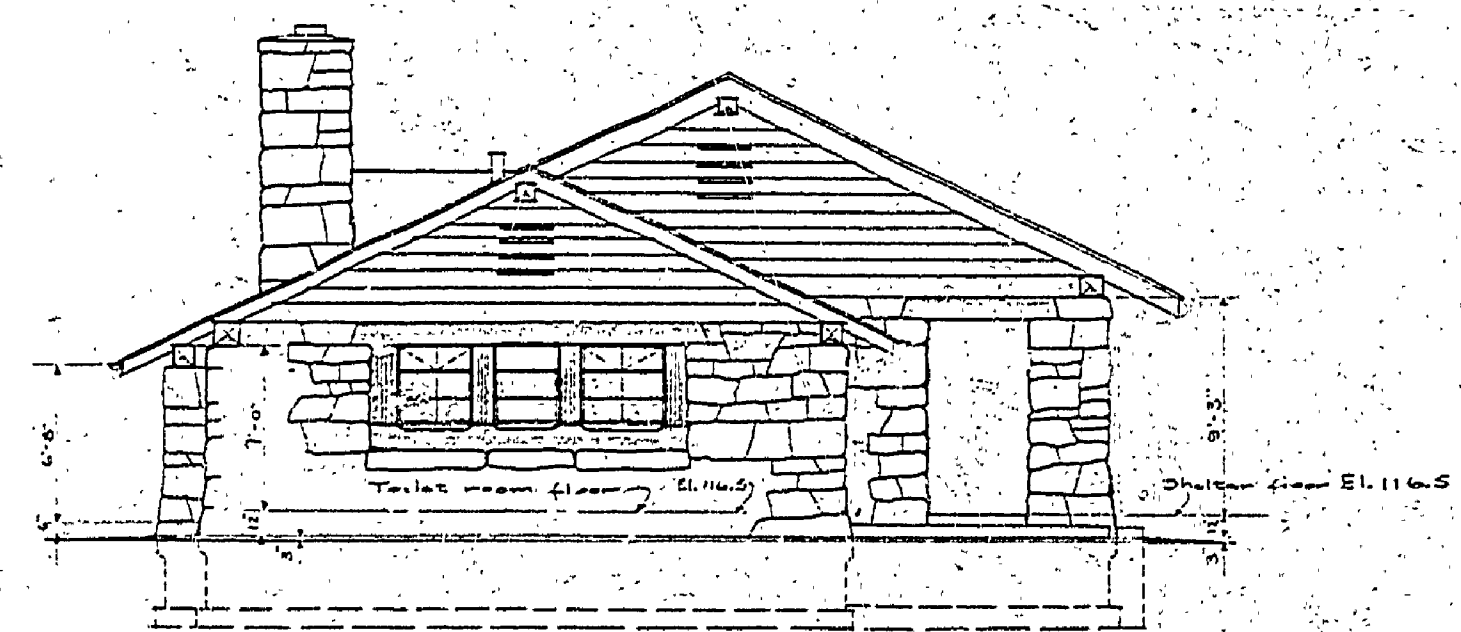


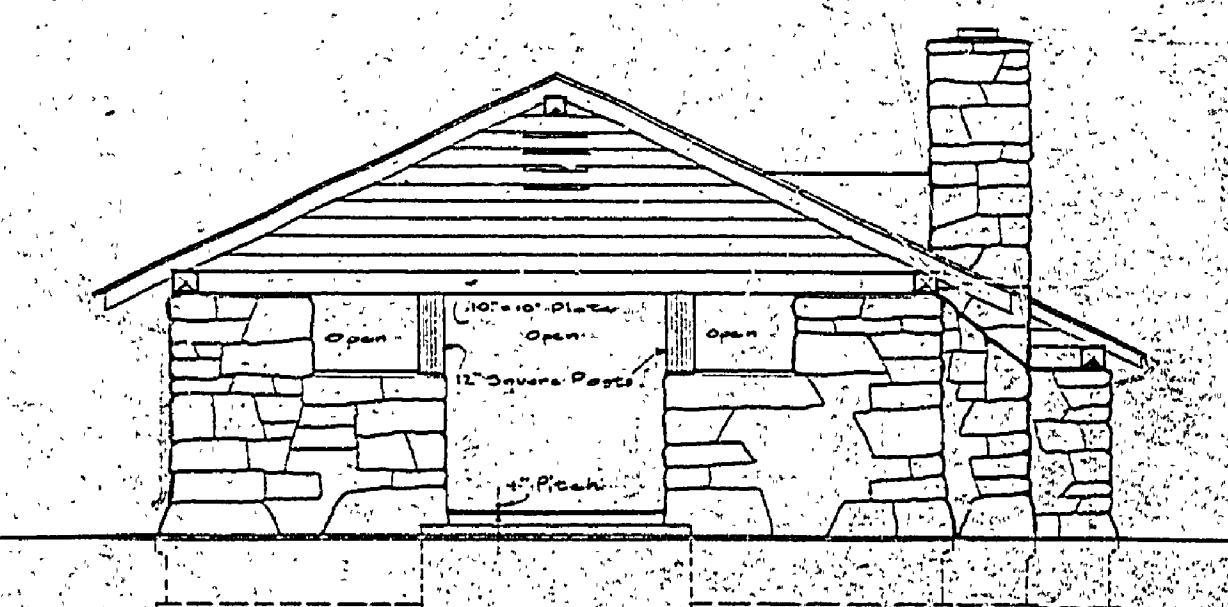
NORTH ELEVATION
Scale 1/8" = 1'-0"



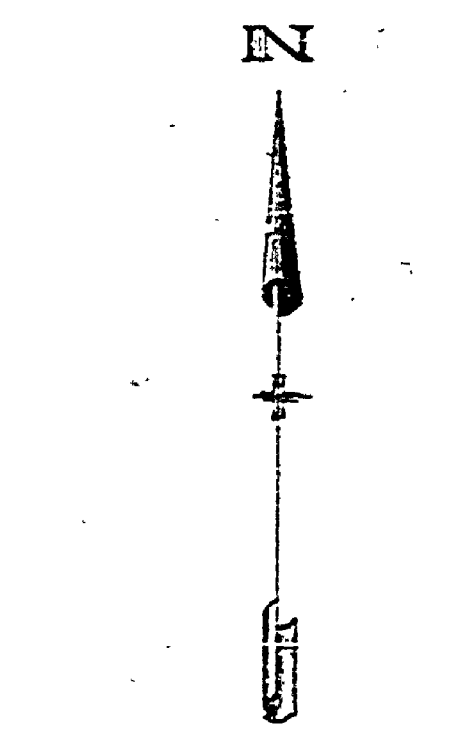
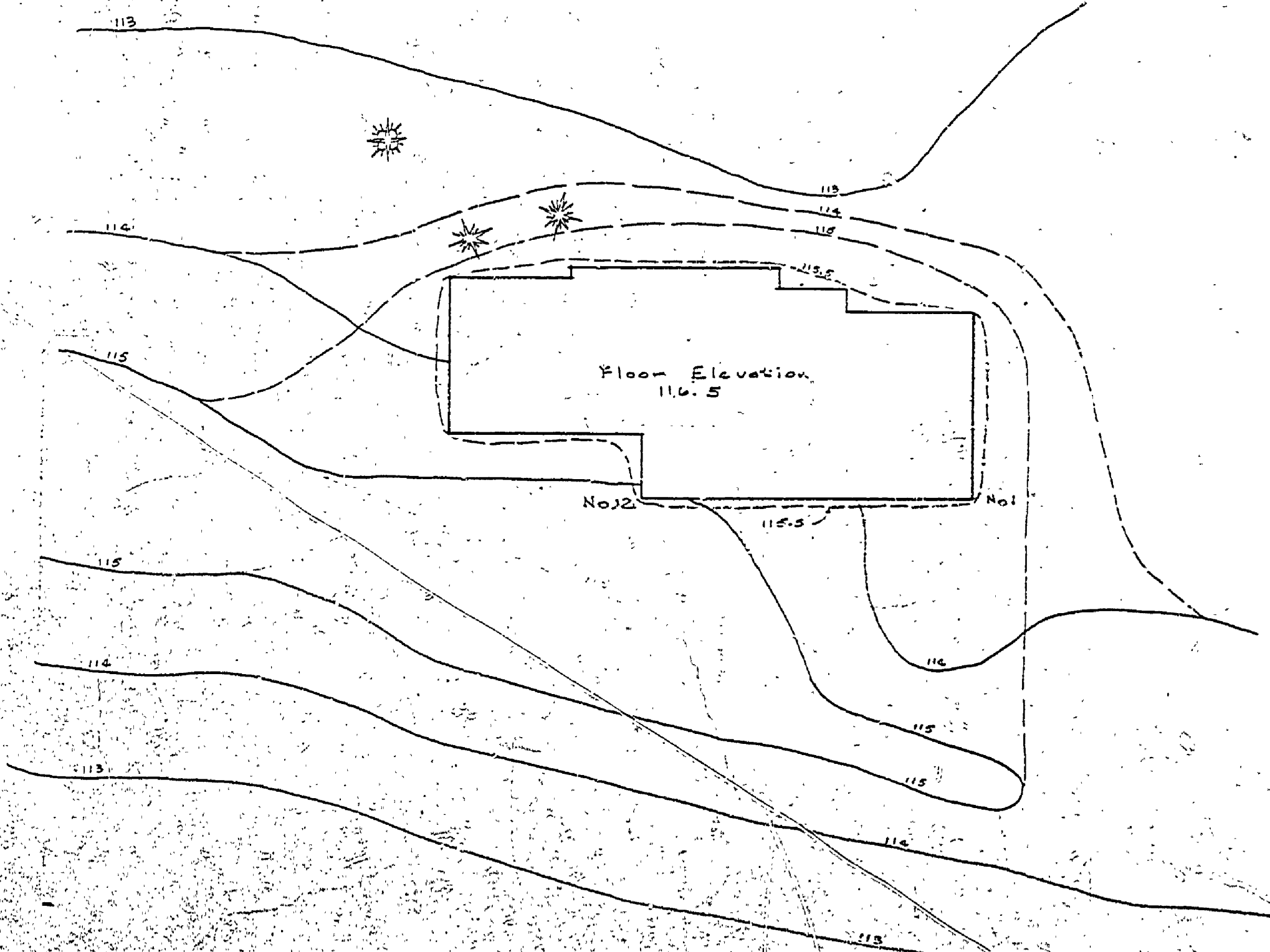
SOUTH ELEVATION
Scale 1/8" = 1'-0"



WEST ELEVATION
Scale 1/8" = 1'-0"

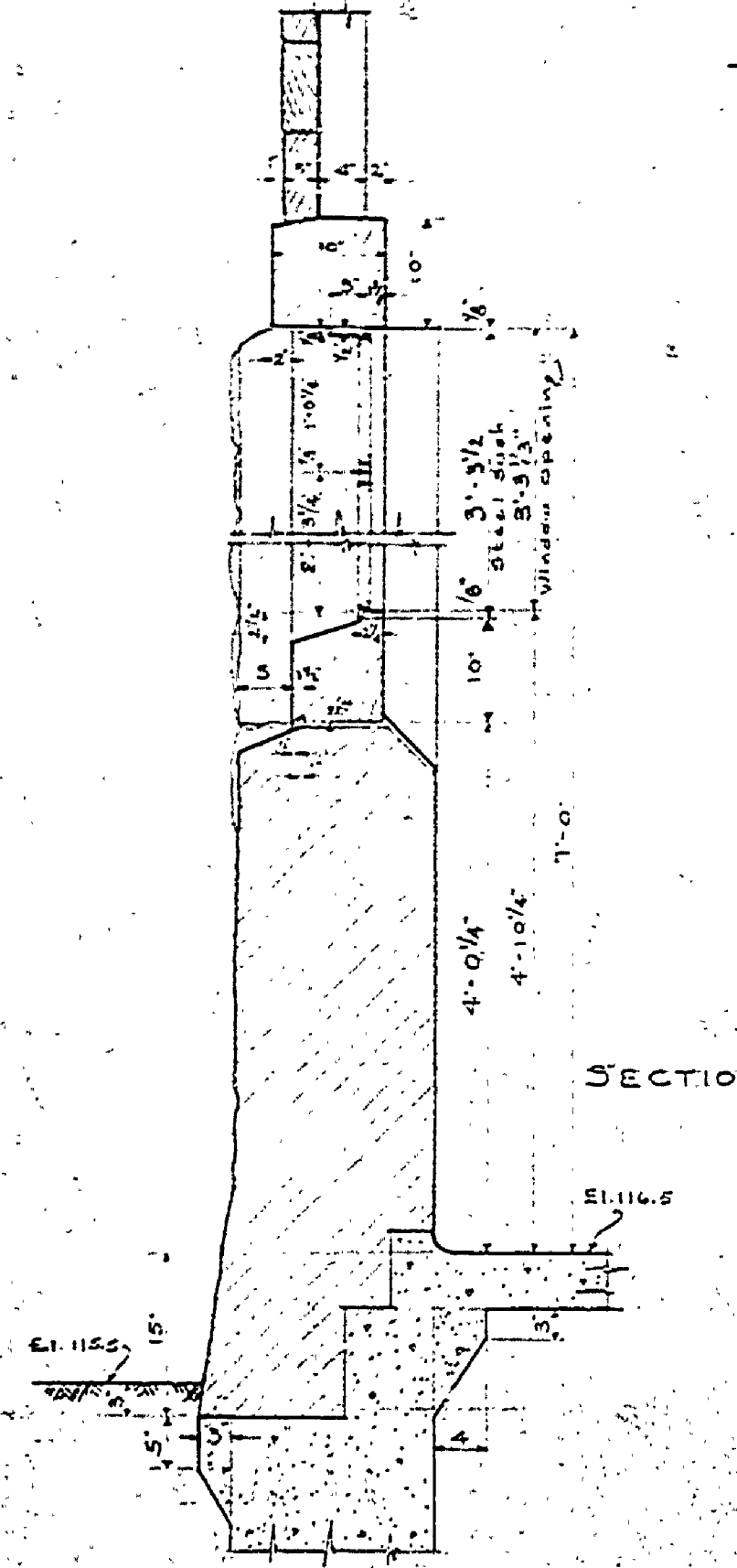


EAST ELEVATION
Scale 1/8" = 1'-0"



PLOT PLAN

Scale 20' = 1"



SECTION

WINDOW DETAILS
Scale 3/4" = 1'-0"

A-101

MICHIGAN DEPARTMENT OF CONSERVATION STATE PARKS DIVISION		
DESIGNED BY S. M. HARTWICK	PROJECT FORT WILKINS STATE PARK TOILET & SHELTER BUILDING	SHEET NUMBER A-101
DRAWN BY C. V. OPDRES	DATE 1934	AS SHOWN BY PLAN
CHECKED BY C. V. OPDRES	APPROVED <i>[Signature]</i> SUPERVISOR	INSPECTOR
APPROVED	INSPECTOR	INSPECTOR