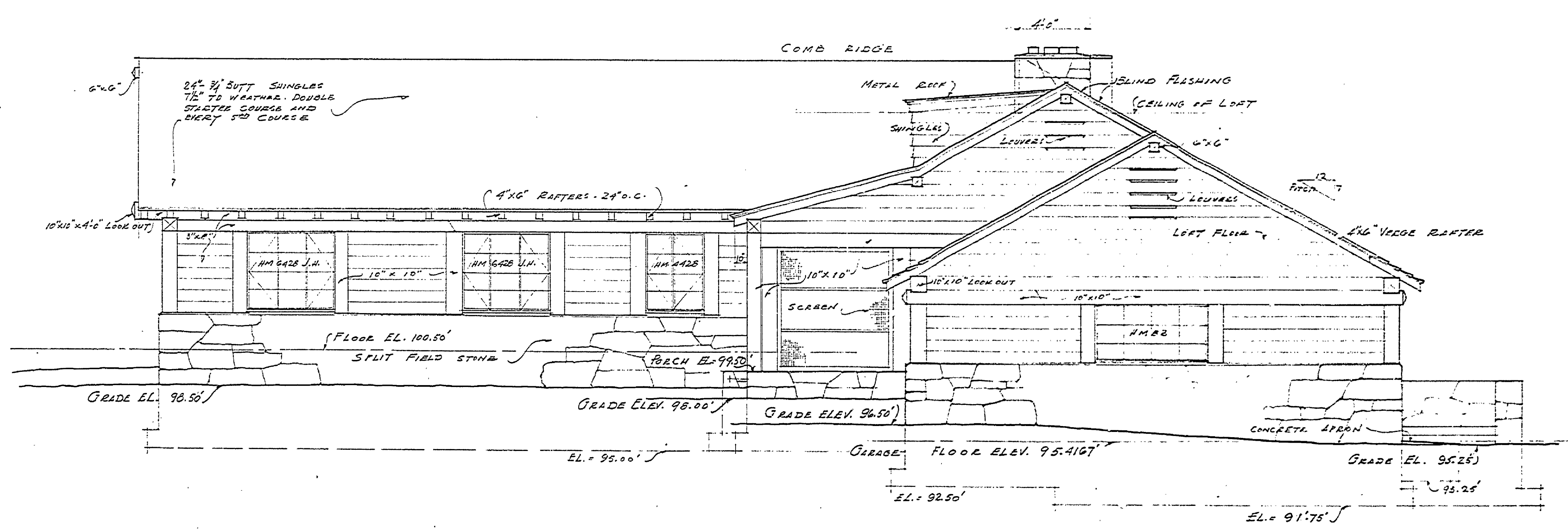
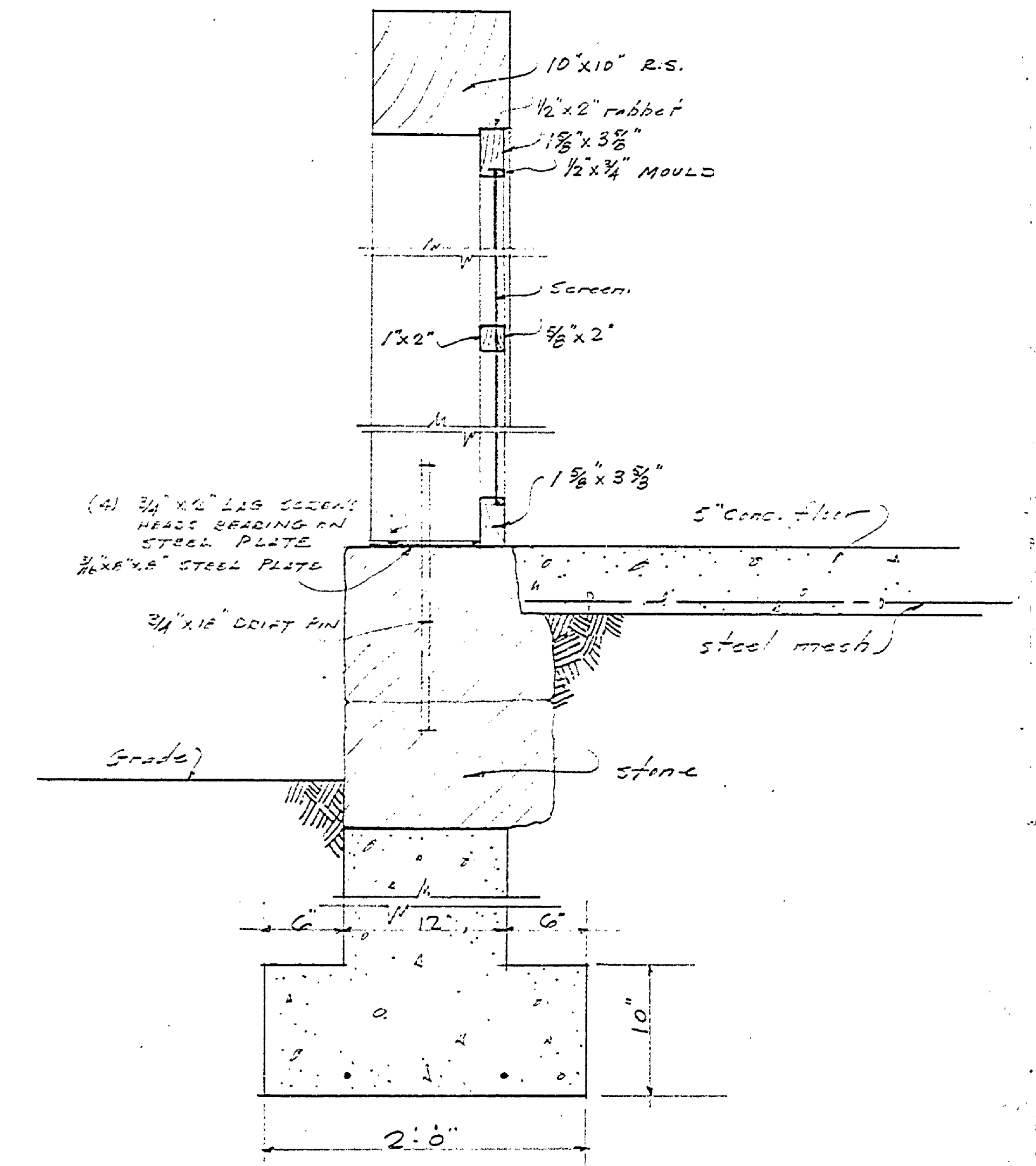


SOUTH ELEVATION
SCALE 1/4" = 1'-0"



NORTH ELEVATION
SCALE 1/4" = 1'-0"



DETAIL OF PORCH SCREENS
SCALE 1/2" = 1'-0"

MICHIGAN DEPT. OF CONSERVATION STATE PARKS DIVISION		
DESIGNED BY DRAWN BY CHECKED BY DATE	CREATED BY FOR T. WILKINS STATE PARKS	SUBMITTED SCALE DATE
Approved: _____	Chief, Parks Division	DATE
Approved: _____	Inspector	DATE
Approved: _____		DATE

A-102