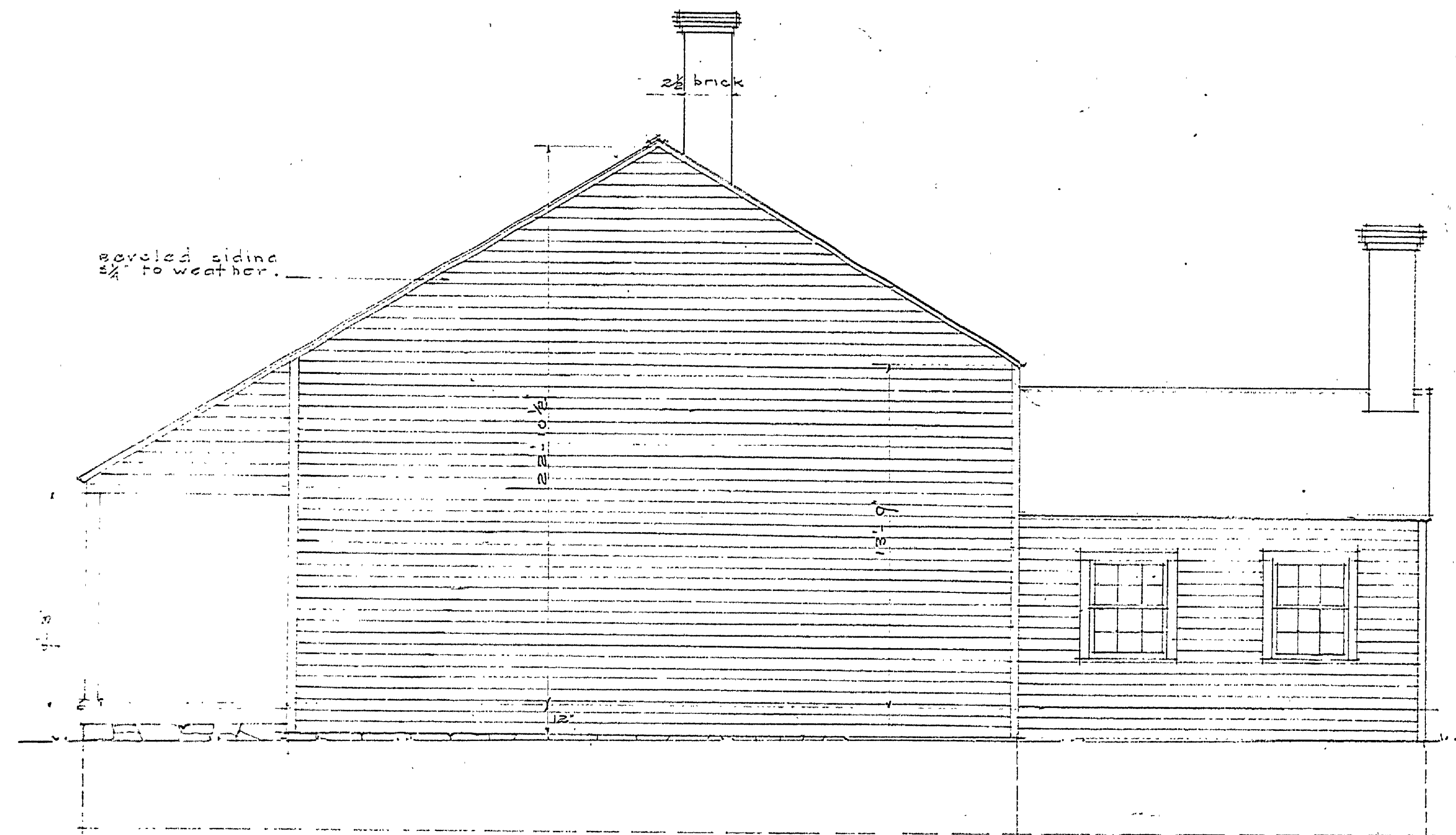
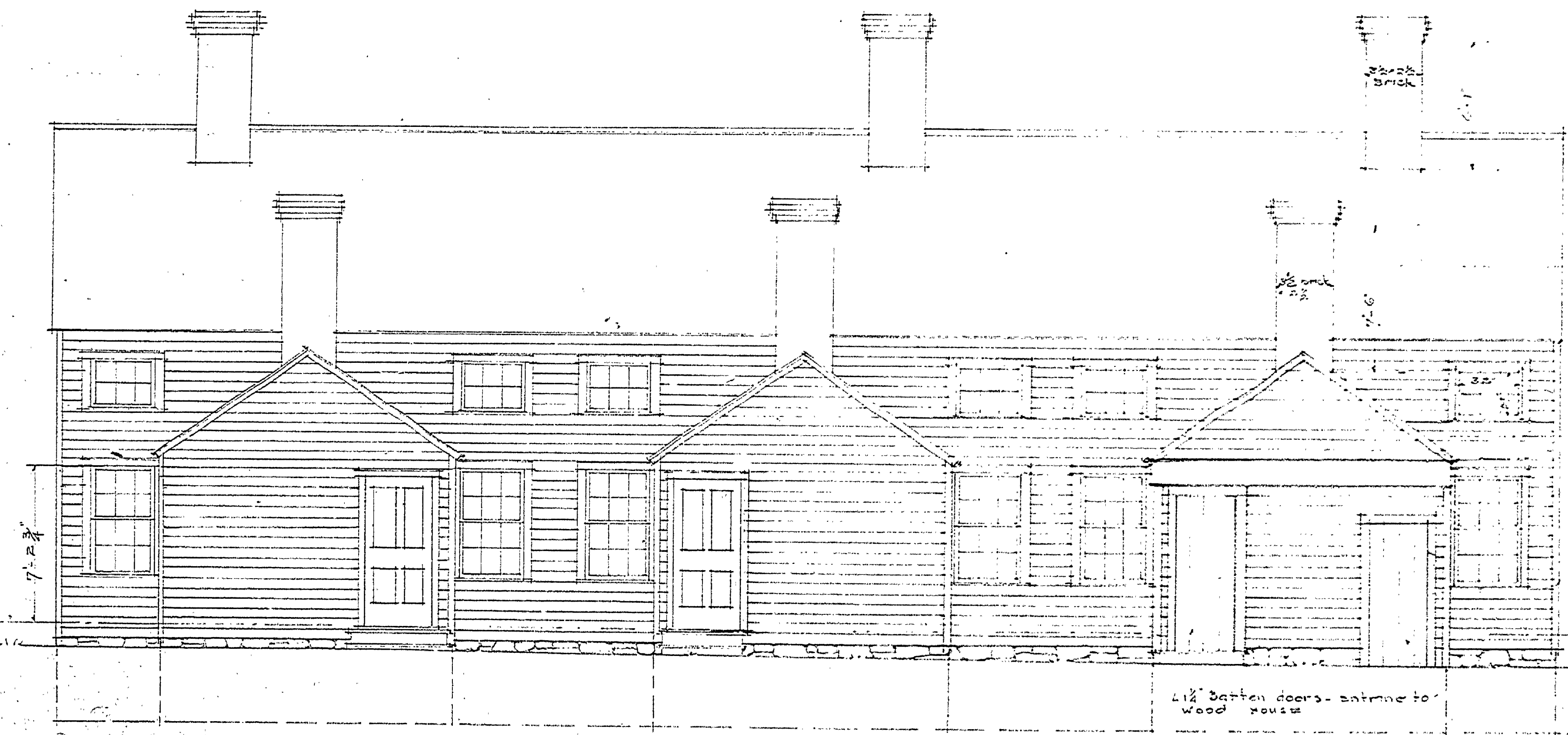


SOUTH ELEVATION  
SCALE 1/4" = 1'-0"

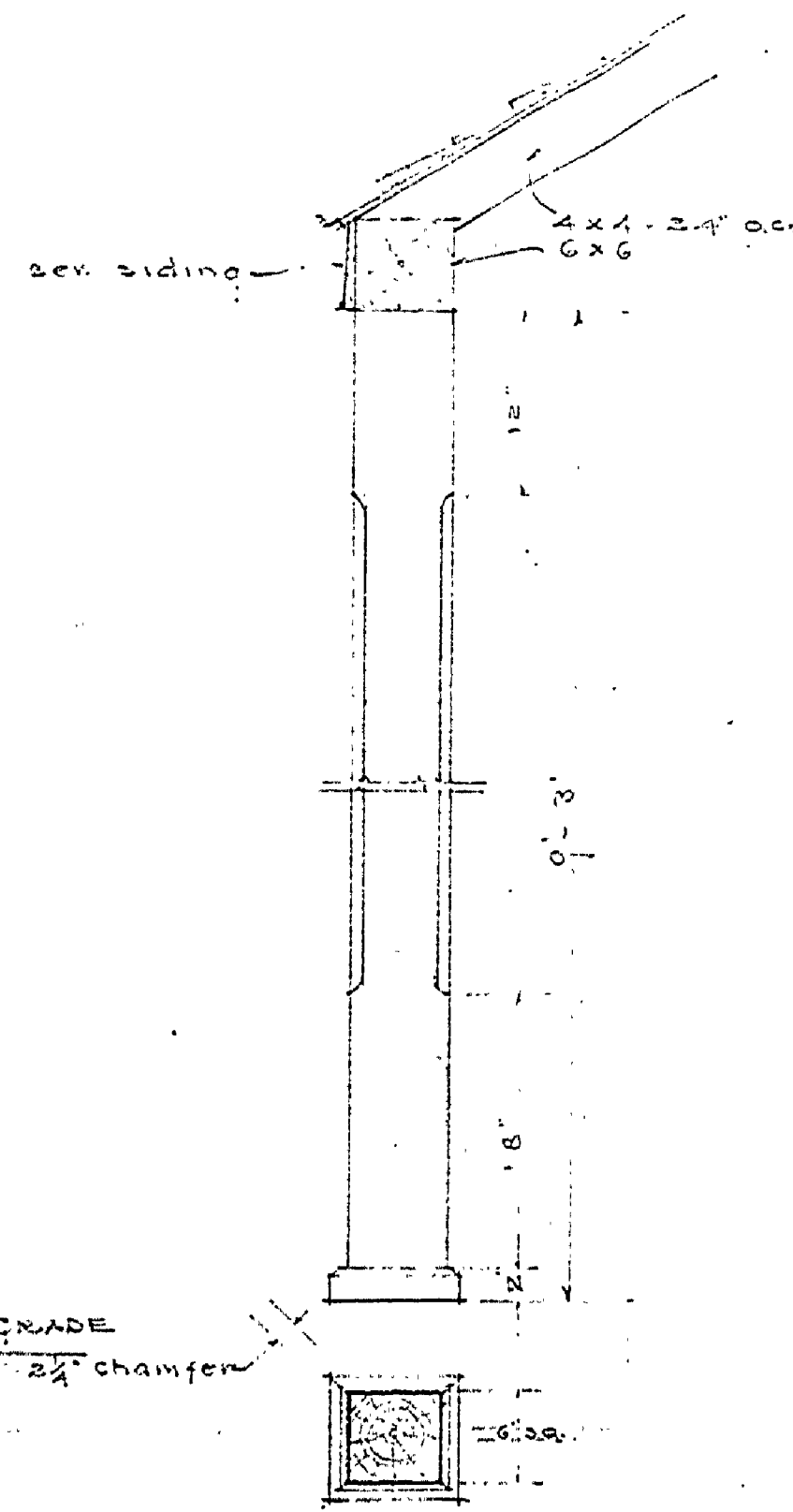


EAST ELEVATION  
SCALE 1/4" = 1'-0"

NOTE: All exterior doors to be 30" x 66" x 1 1/2" made as per detail.  
Window blinds to be installed on all windows on 1st story except kitchen see detail sheet no. \_\_\_\_\_



NORTH ELEVATION  
SCALE 1/4" = 1'-0"



DETAIL OF POST  
SCALE 1" = 1'-0"

MICHIGAN DEPARTMENT OF CONSERVATION PARKS DIVISION		
JESSE T. WILKINS		SHEET NO. 4 Sheet 4 of 7
DRAWN BY	JESSE T. WILKINS	SCALE
TRACED BY	JESSE T. WILKINS	DATE
APPROVED BY	JESSE T. WILKINS	DATE
APPROVED BY	CHIEF OF PARKS DIVISION	DATE

INSURANCE No. 14  
A-108-e