
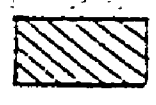
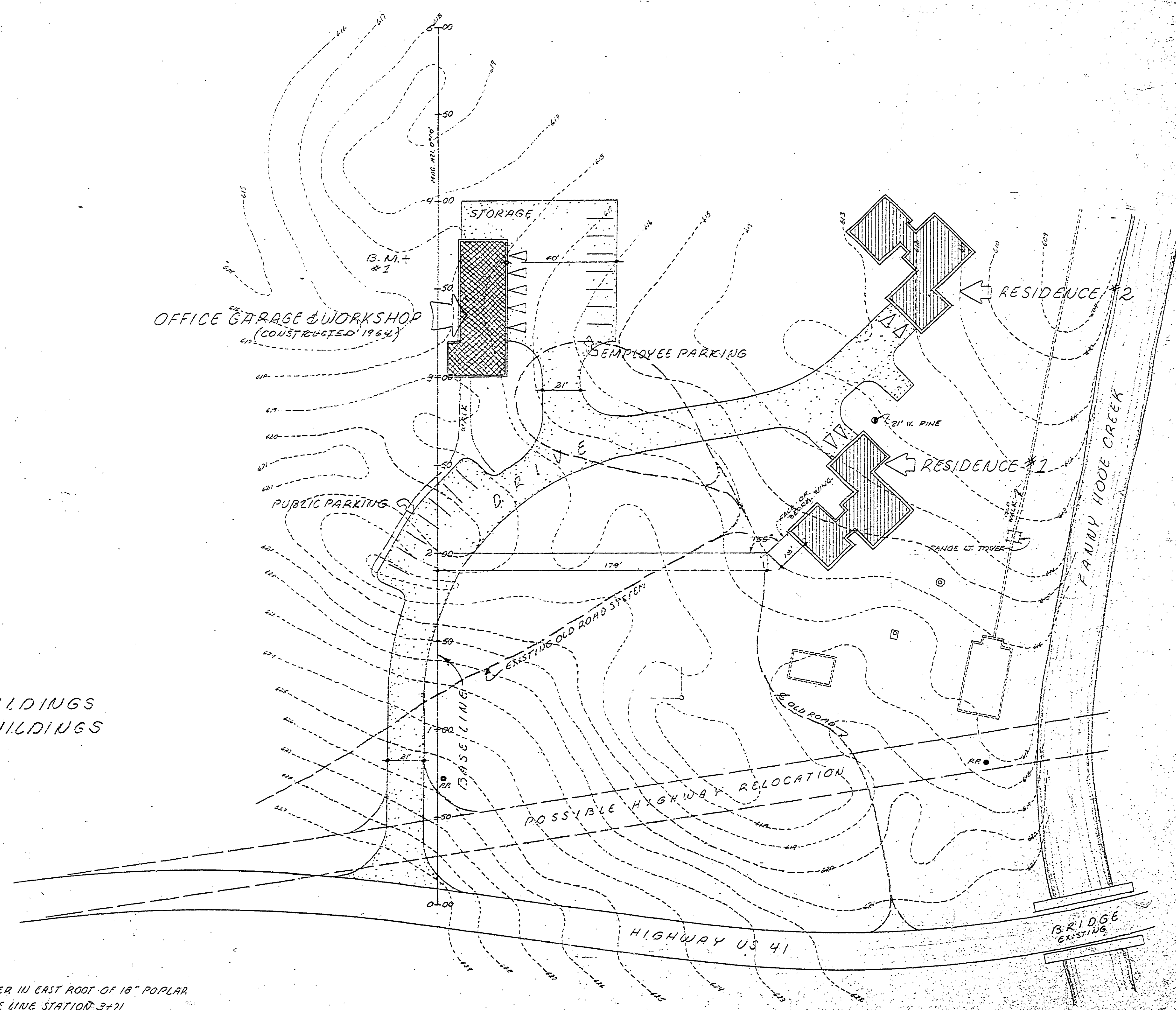


DESIGNED BY	DATE	REVIEWED	DATE	APPROVED	DATE	NO.	DATE BY	REVISIONS
W.M.K.	7-63	ARCHITECTURAL	7-63			1	1-65 W.M.K.	RESIDENCE RELOCATION TO CONFORM TO STANDARD RESIDENCE PLAN
W.M.K.	7-63	ENGINEERING	7-63			2		
W.M.K.	7-63	LANDSCAPE	7-63			3		
								4
								5
								6

 EXISTING BUILDINGS
 PROPOSED BUILDINGS

BENCH MARK - R.L. NAIL & WASHER IN EAST ROOT OF 18" POPLAR
 #2
 18" LEFT OF BASE LINE STATION 3+71
 ELEVATION 618.45



NORTH
 MAP SCALE: 1" = 30' - 0"

CONSERVATION COMMISSION APPROVAL
 BY: *H.C. Matheson* DATE: 6/24/65
 DESIGN RECOMMENDED FOR APPROVAL: W.N.G. DATE: 4-21-65
 RECOMMENDED FOR APPROVAL: *E.P. ...*
 APPROVAL: *Richard ...*
 DEPARTMENT OF CONSERVATION
 APPROVED: *H.C. Matheson* DATE: 4/21/65
 CHIEF ENGINEER

MICHIGAN
 DEPARTMENT OF CONSERVATION
 PARKS AND RECREATION DIVISION

FORT WILKINS STATE PARK
 RESIDENCE #1

SHEET NO. 1 OF 1
 PLANNING NO. 10715