

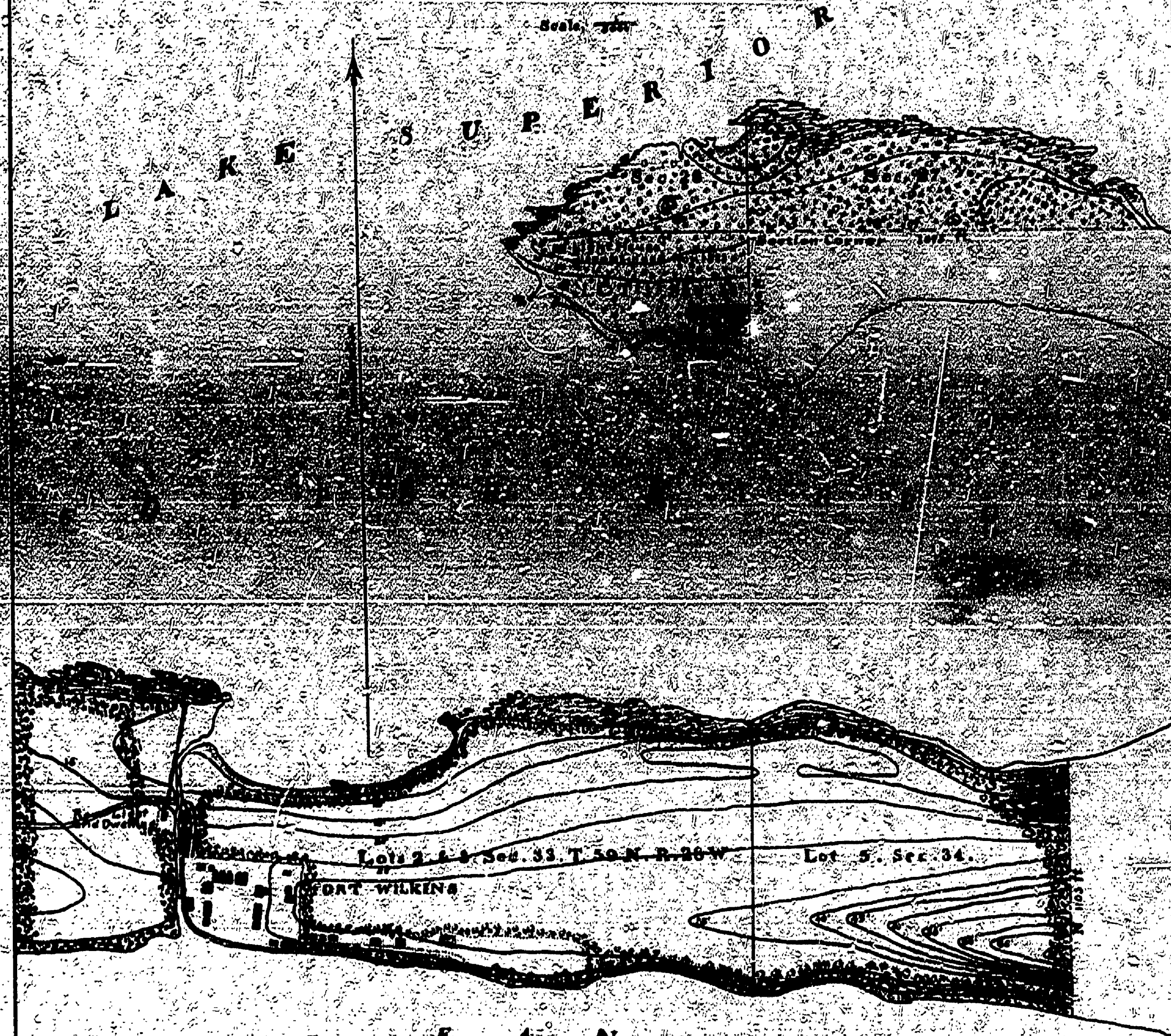
#20-K

### COPPER HARBOR RANGE

<b>Order of Light</b>	<b>Character</b>	<b>LIGHT STATION</b>	<b>Site Reserved for Military purposes Aug 1855</b>
<b>Character of Light</b>	<b>Flash White</b>	<b>MICH</b>	<b>First buildings when built 1855</b>
<b>Date of Suspension under level</b>	<b>22 2 59</b>	<b>Lat. 42° 00' N</b>	<b>When rebuilt or renewed</b>
<b>Local Notice</b>		<b>Long. 81° 45' W</b>	<b>Age of Reservation is 41 N. W. line, 1855 June</b>
			<b>Area enclosed</b>

Reservation Surveyed October 1877 by H. A. Uiffers.

Scale 1/4" = 1 mile

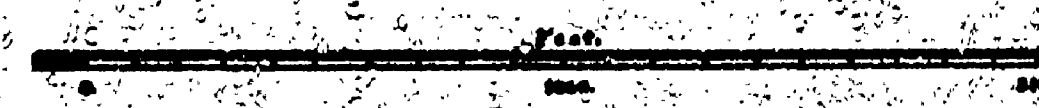


L A K E F A N N Y H O O D

EXPLANATIONS

The Magnetic Declination in 1877 was determined by comparison of observations  
 have been found the declination at time of survey was determined by observation  
 of Polaris to be 20° 21'. - Course given on plan on the bearing. Course of 1877 upon  
 N. 20° 21' E. - Boundary of Reservation. - Boundary of Reservation April 2, 1847.  
 Sec. 33, 34, and Lot 2, 3, 4, Sec. 33, Reserved for U.S. House of Representatives April 2, 1847.  
 a show band, 1/2 in. by 1/2 in. up on this.

U.S. L.M.E.



Map of Dept.  
 Eng. 11 1/2 in.  
 Fort Wilkins S.P.  
 R-1-A  
 Land Map