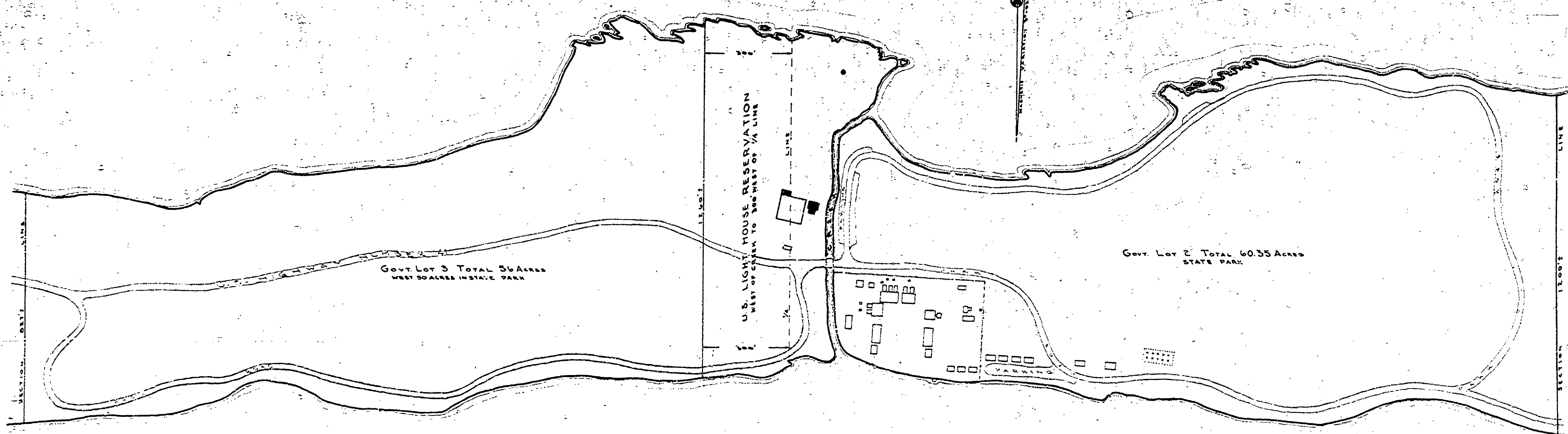


C O P P E R

H A R B O R



L A K E F A N N Y H O O E

**FORT WILKINS STATE PARK**  
 COPPER HARBOR, KEWEENAW COUNTY  
 DRAWN BY DEPT. OF CONSERVATION FROM A MAP MADE BY  
 MAJOR G. WEITZEL, CORPS OF ENGINEERS, U.S.A., OCTOBER, 1917  
 SCALE 1" = 100'  
 11055 ACRES