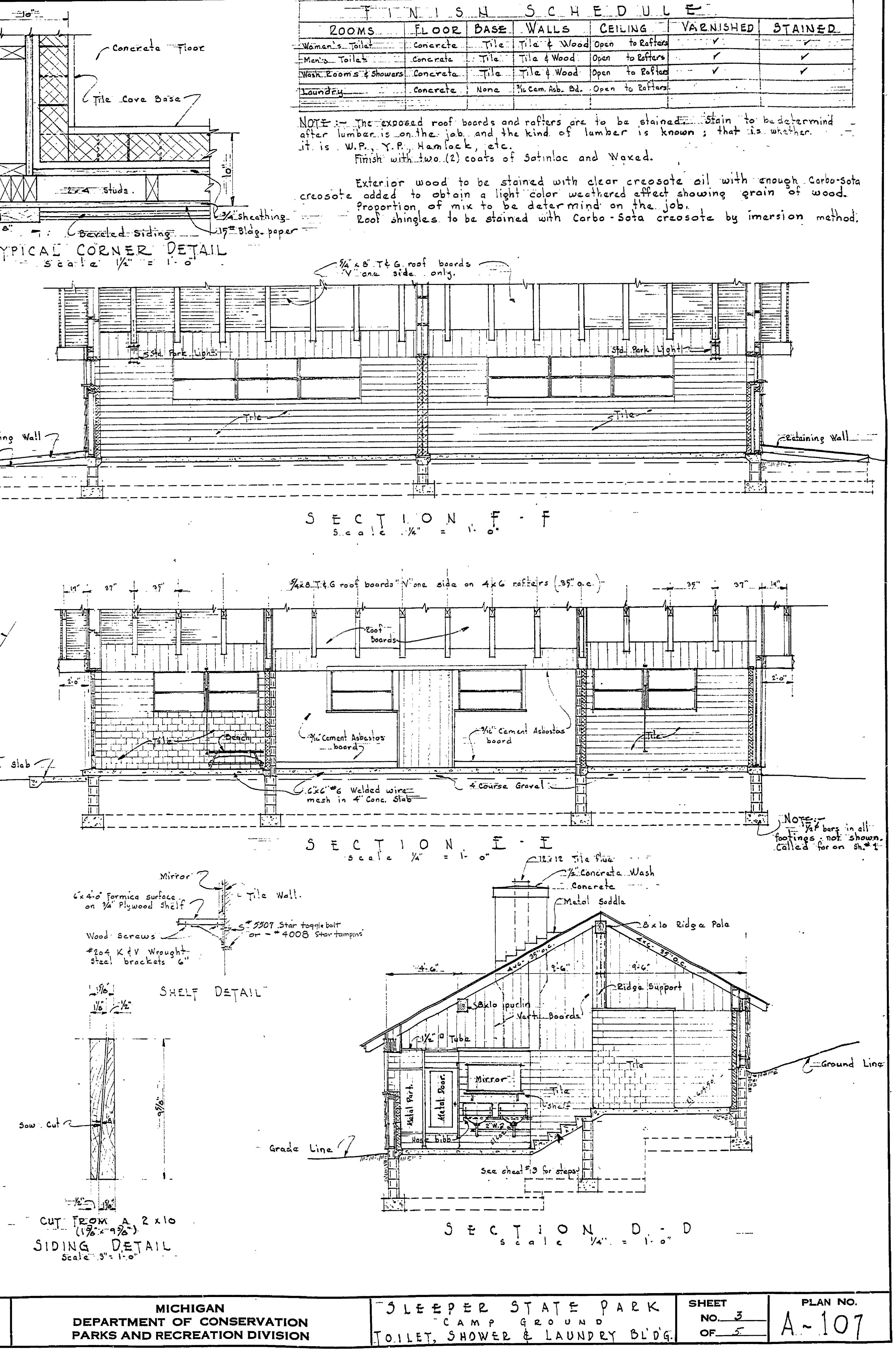
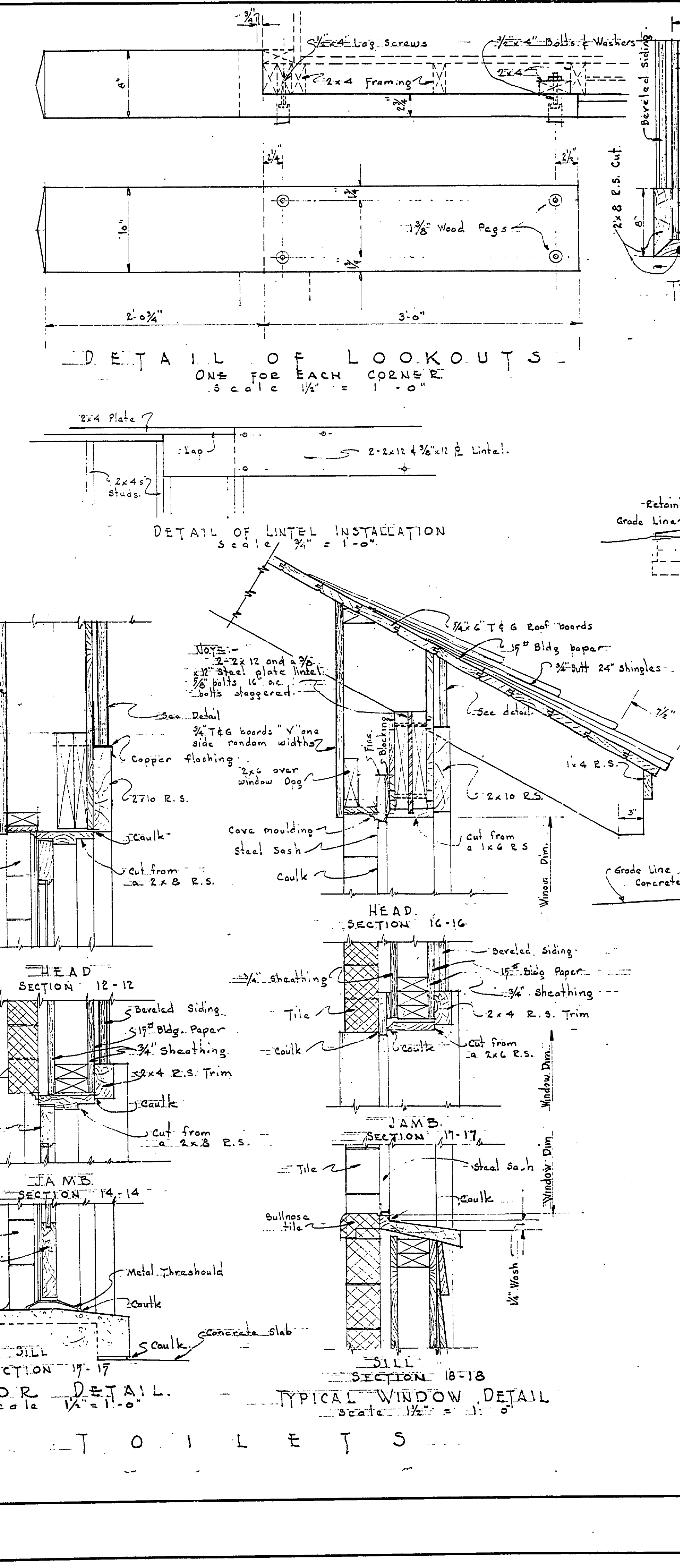
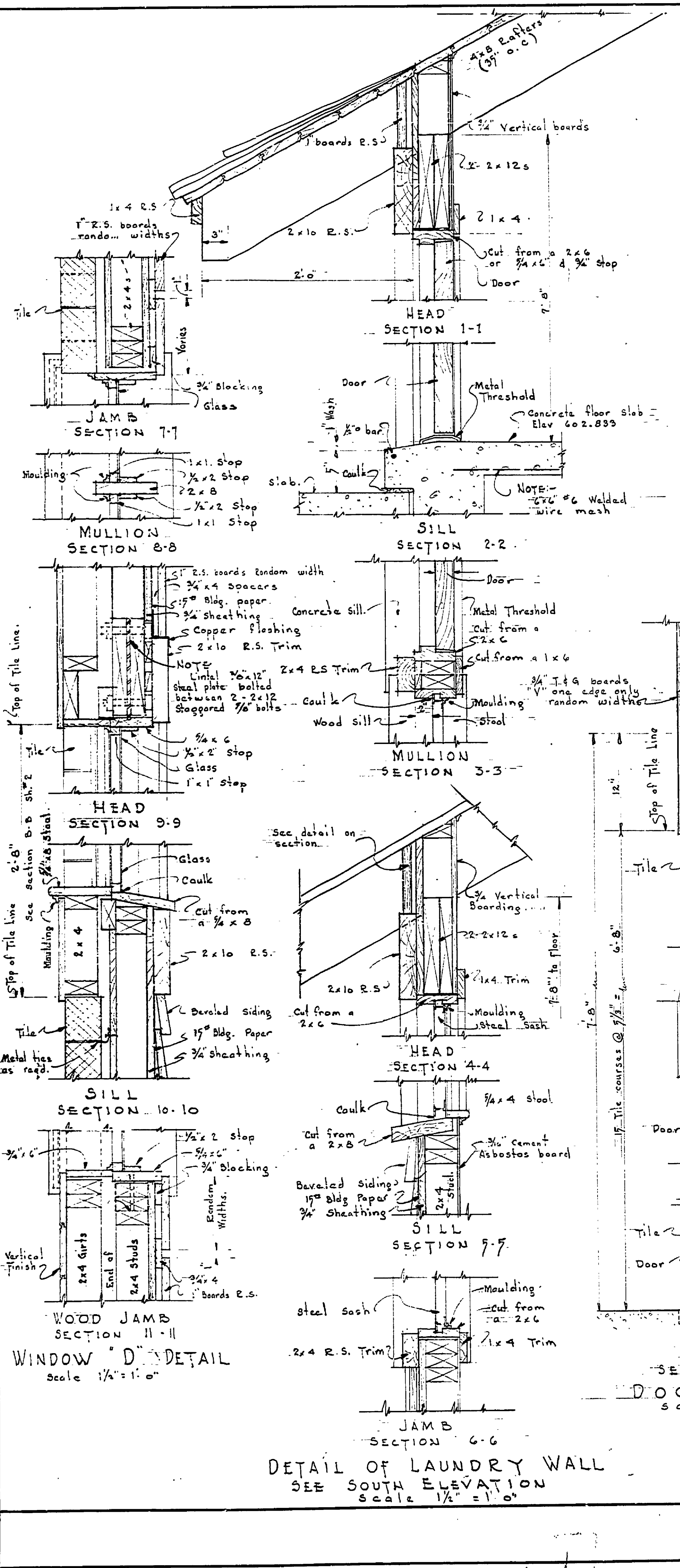


|                     |                      |      |                              |                              |      |             |      |             |     |      |    |           |
|---------------------|----------------------|------|------------------------------|------------------------------|------|-------------|------|-------------|-----|------|----|-----------|
| DRAWN BY<br>J.W.F.  | CHECKED BY<br>J.S.F. | DATE | REVIEWED BY SECTIONS         |                              |      | APPROVED BY |      |             | NO. | DATE | BY | REVISIONS |
|                     |                      |      | ARCHITECTURAL<br>ENGINEERING | LANDSCAPE                    | DATE | DATE        | DATE | DATE        |     |      |    |           |
| TRACED BY<br>J.S.F. |                      | DATE |                              | ARCHITECTURAL<br>ENGINEERING |      | LANDSCAPE   |      | DESIGN DATE |     | BY   |    |           |
|                     |                      |      |                              |                              |      |             |      | 1-18-51     |     | BY   |    |           |
|                     |                      |      |                              |                              |      |             |      | 1-17-51     |     | BY   |    |           |
|                     |                      |      |                              |                              |      |             |      | 1-17-51     |     | BY   |    |           |
|                     |                      |      |                              |                              |      |             |      | 1-17-51     |     | BY   |    |           |
|                     |                      |      |                              |                              |      |             |      | 1-17-51     |     | BY   |    |           |
|                     |                      |      |                              |                              |      |             |      | 1-17-51     |     | BY   |    |           |
|                     |                      |      |                              |                              |      |             |      | 1-17-51     |     | BY   |    |           |
|                     |                      |      |                              |                              |      |             |      | 1-17-51     |     | BY   |    |           |



| ZOOMS                | FLOOR    | BASE | WALLS              | CEILING         | VARNISHED | STAINED |
|----------------------|----------|------|--------------------|-----------------|-----------|---------|
| Women's Toilet       | Concrete | Tile | Tile & Wood        | Open to Rafters |           |         |
| Men's Toilet         | Concrete | Tile | Tile & Wood        | Open to Rafters | ✓         | ✓       |
| Wash Rooms & Showers | Concrete | Tile | Tile & Wood        | Open to Rafters | ✓         | ✓       |
| Laundry              | Concrete | None | 1/2" Cem. Ash. Bd. | Open to Rafters |           |         |

NOTE: The exposed roof boards and rafters are to be stained. Stain to be determined after lumber is on the job and the kind of lumber is known; that is whether it is W.P., Y.P., Hamlock, etc.  
Finish with two (2) coats of Satinac and Waxed.

Exterior wood to be stained with clear creosote oil with enough Carbo-Sota creosote added to obtain a light color weathered effect showing grain of wood. Proportion of mix to be determined on the job.

Roof shingles to be stained with Carbo-Sota creosote by immersion method.