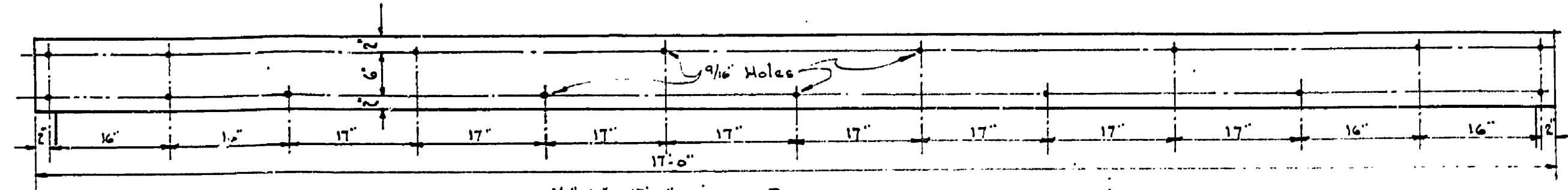
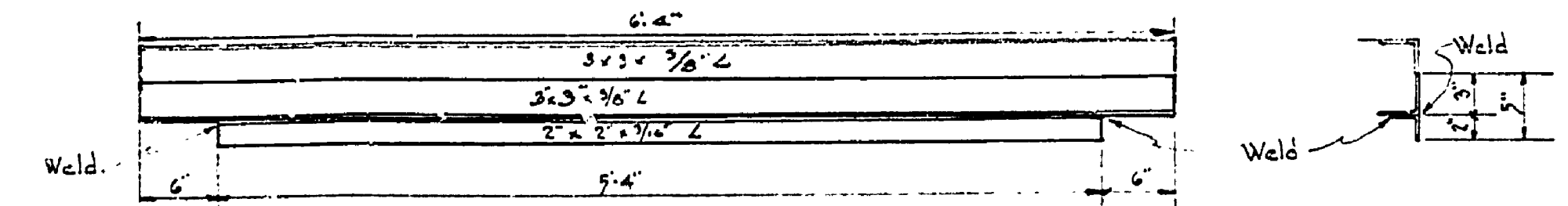


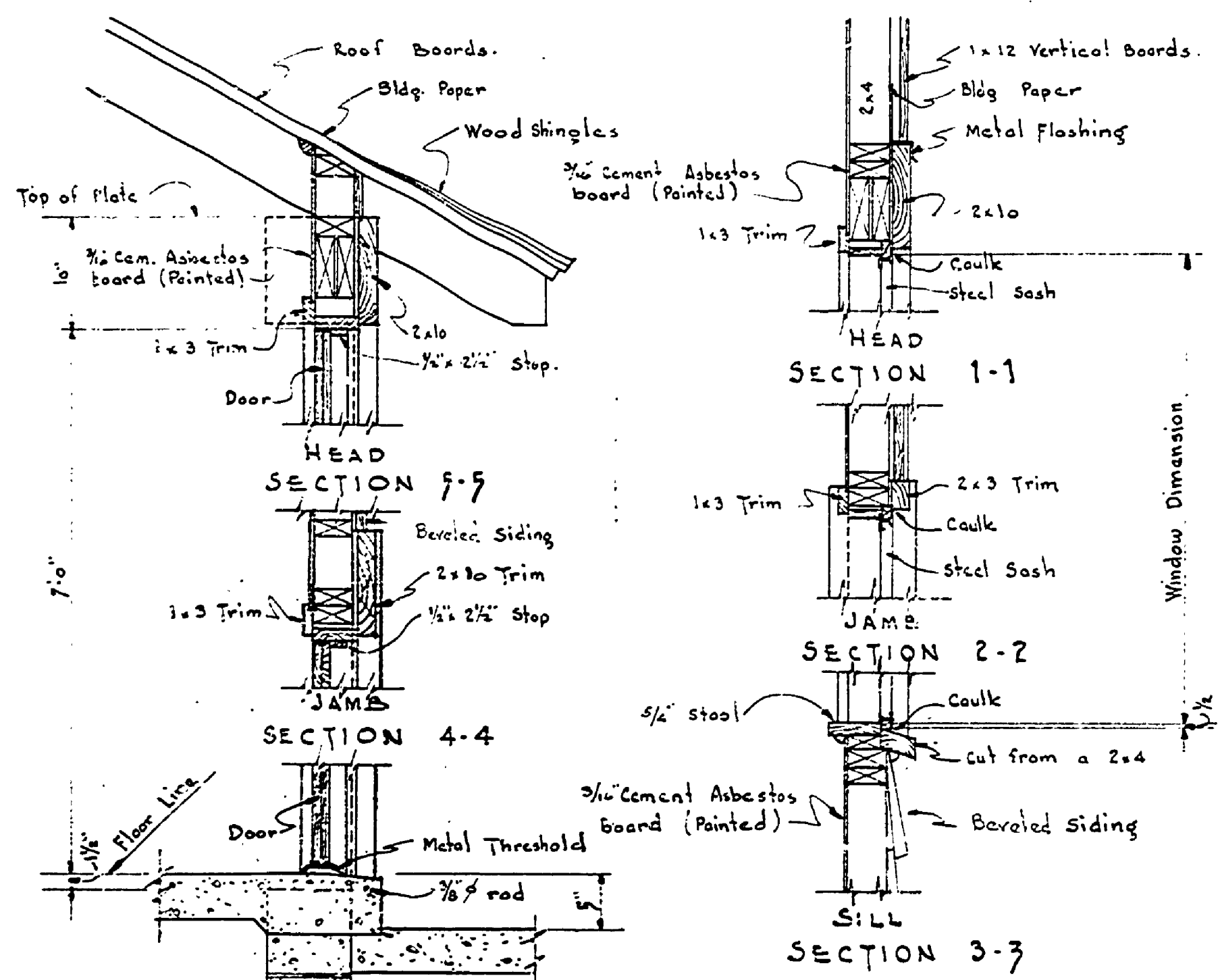
REVISIONS	NO.	DATE	BY
	1		
	2		
	3		
	4		
	5		
APPROVED BY	DATE	BY	REVIEWED BY SECTIONS
	9-14-54	J.I.R.	ARCHITECTURAL
	9-14-54	P.M.	ENGINEERING
	9-14-54	L.R.	LANDSCAPE
	9-14-54		
	9-14-54		
TRACED BY	DATE	BY	CHECKED BY



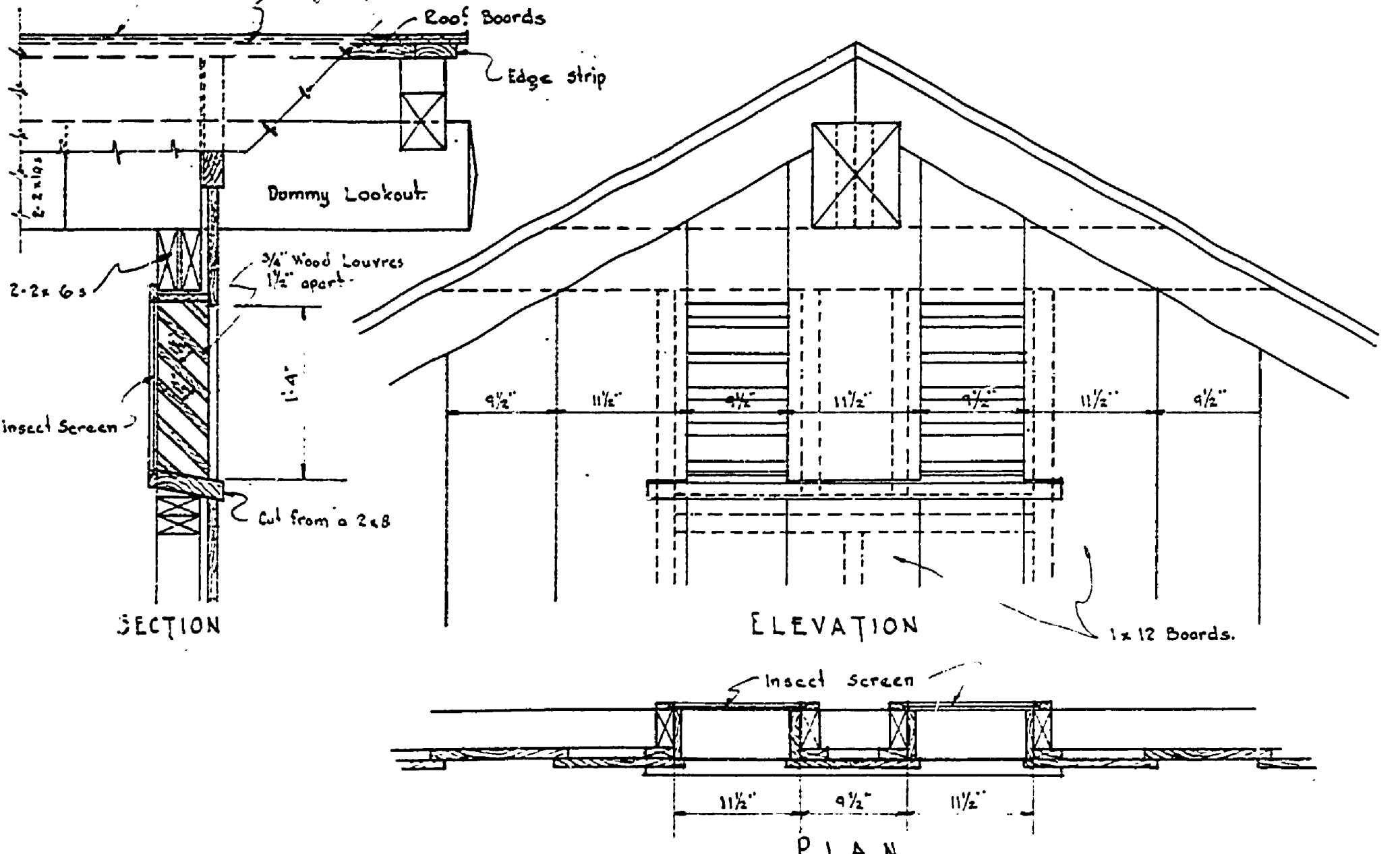
1/4" x 16" x 17'-0" STEEL PLATE  
Punch as shown  
LINTLE PLATE DETAIL  
Scale 3/4" = 1'-0"



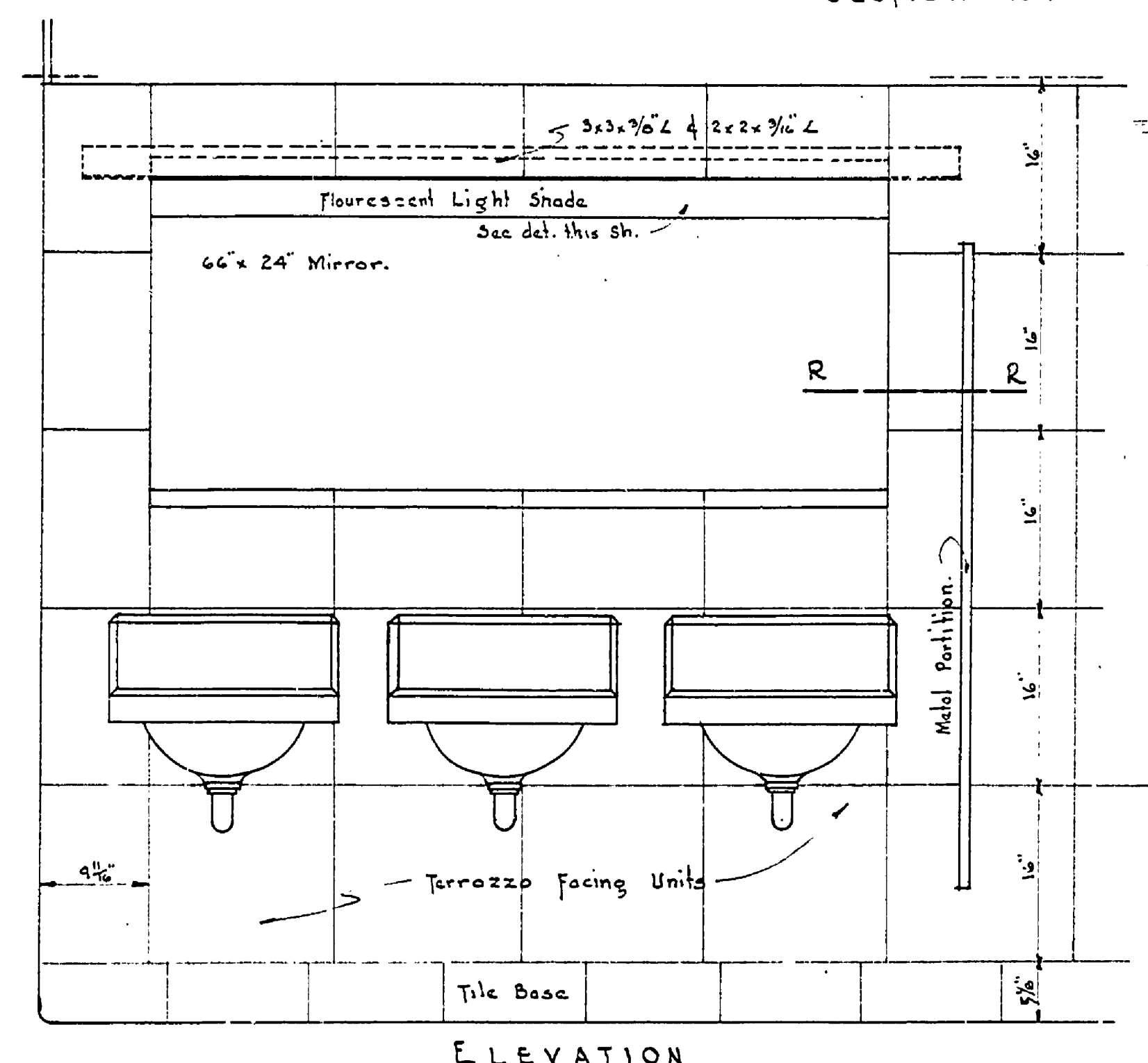
MIRROR LINTLE DETAIL  
Scale 1" = 1'-0"



SECTION 6-6 LAUNDRY AND STORAGE ROOM  
Scale 1" = 1'-0"



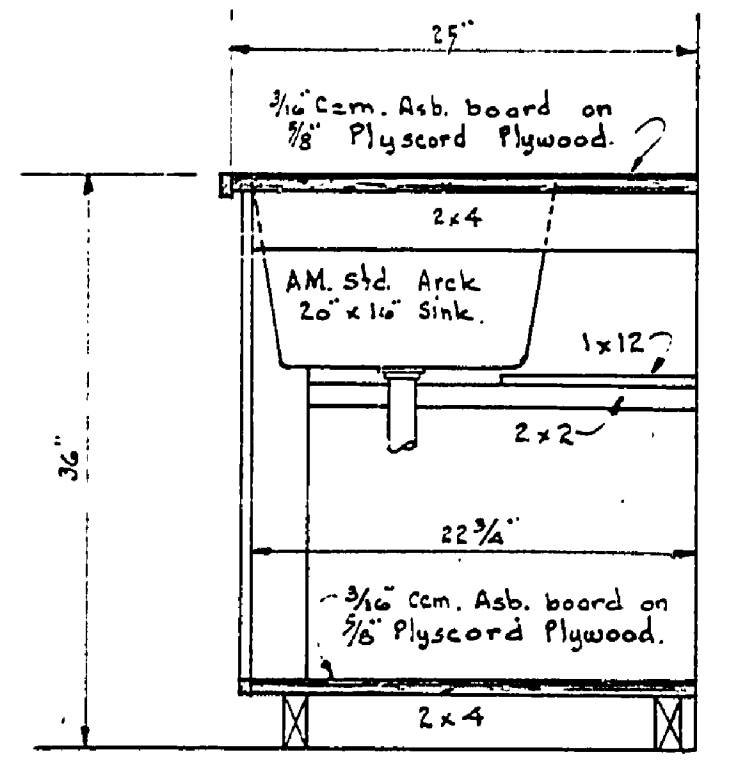
LOUVRE DETAIL  
Scale 1" = 1'-0"



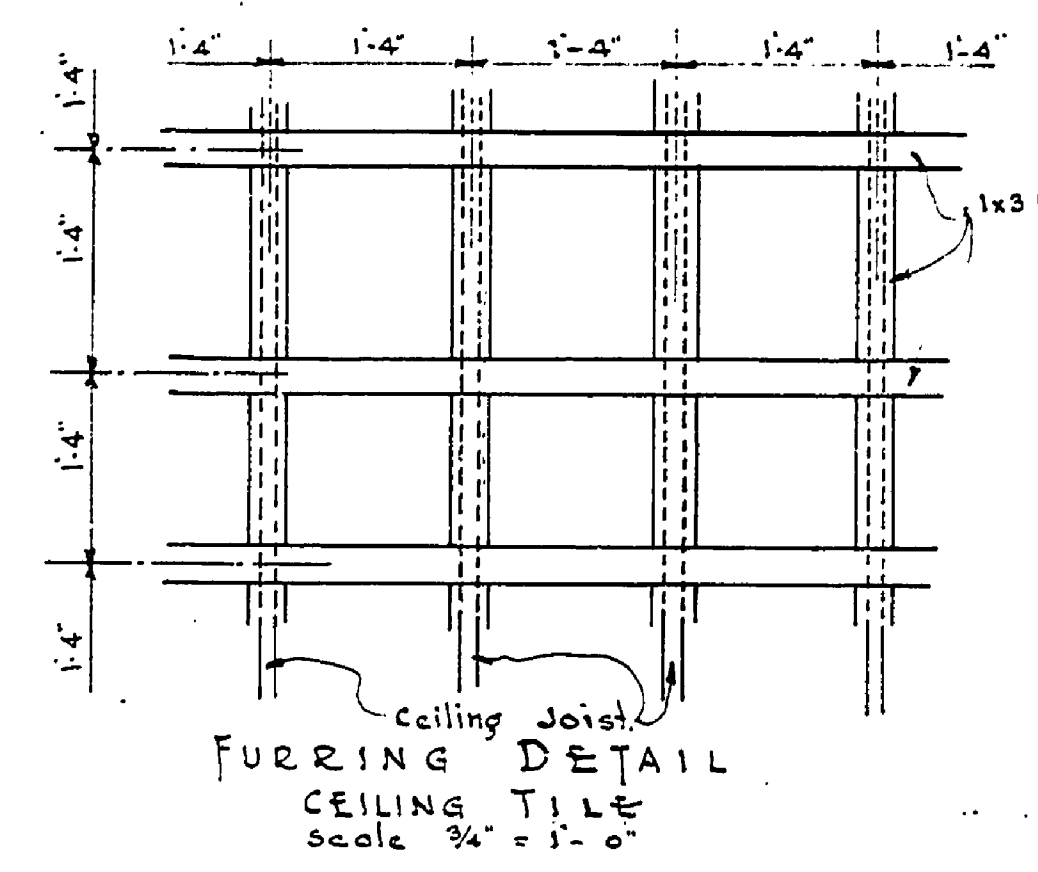
TYPICAL MIRROR DETAIL  
Scale 1" = 1'-0"

ROOMS	FLOOR	FINISH SCHEDULE						
		BASE	WALLS	CEILING	STAINED	PAINTED	VARNISHED	WAXED
WOMEN'S TOILET	Concrete	Tile	Terrazzo & Wood	Exposed Rafters & Roof Boards	✓		✓	✓
MEN'S TOILET	Concrete	Tile	Terrazzo & Wood	Exposed Rafters & Roof Boards	✓		✓	✓
SHOWERS	Concrete	Tile	Terrazzo & Wood	1/2\"/>				

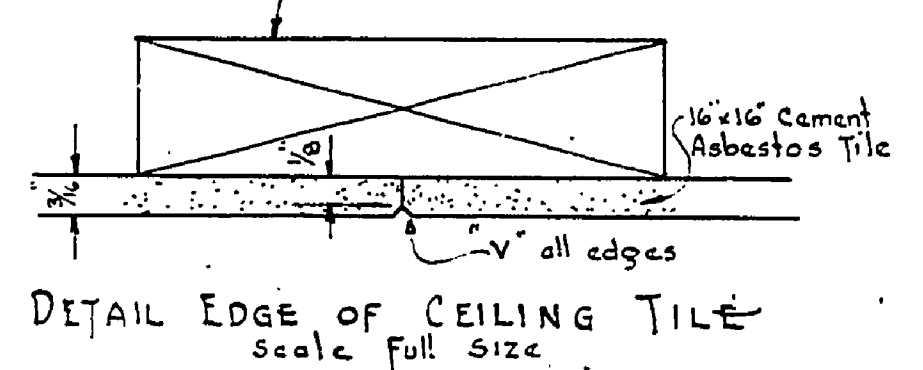
NOTE:-  
 INTERIOR FINISH - - - Stain with clear pentachlorophenol tinted with lamp black ground in oil sufficient for a very light gray stain to be applied to underside of roof boards, vertical boarding, and doors. Roof rafters and 1x12 trim board to receive same material in a medium dark gray (color to be approved by Engineer, before application). All surfaces to be finished with two (2) coats of Selmilac (Selmilac manufactured by the U.S. Plywood Corporation). Laundry room and storage room rafters and roof boards same as toilet rooms. Cinder block to receive a wash coat of sand & cement to fill pores in blocks. Cinder blocks & cement asbestos board walls to receive two (2) coats rubber base paint (Truscon's Para-Stone-Tex Color to be approved by the Lansing Office).  
 EXTERIOR FINISH - - - Finish all siding, rafter tails, under side of exposed roof boards, posts, lookouts and any exposed wood surface with a light brown stain made of a solution of light brown pentachlorophenol.  
 Two (2) coats minimum required.  
 Roof - Wood shingles to be stained with dark brown Carbo-Sala Cresote oil by the emersion method  
 steel sash to have two (2) coats of black oil house paint.



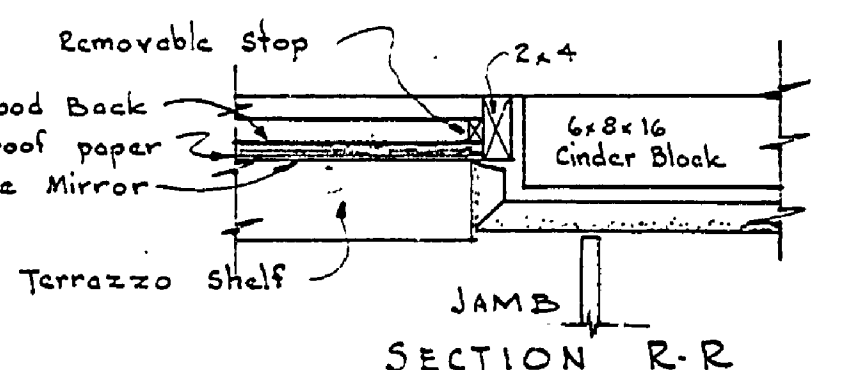
SECTION H-H  
Scale 1" = 1'-0"



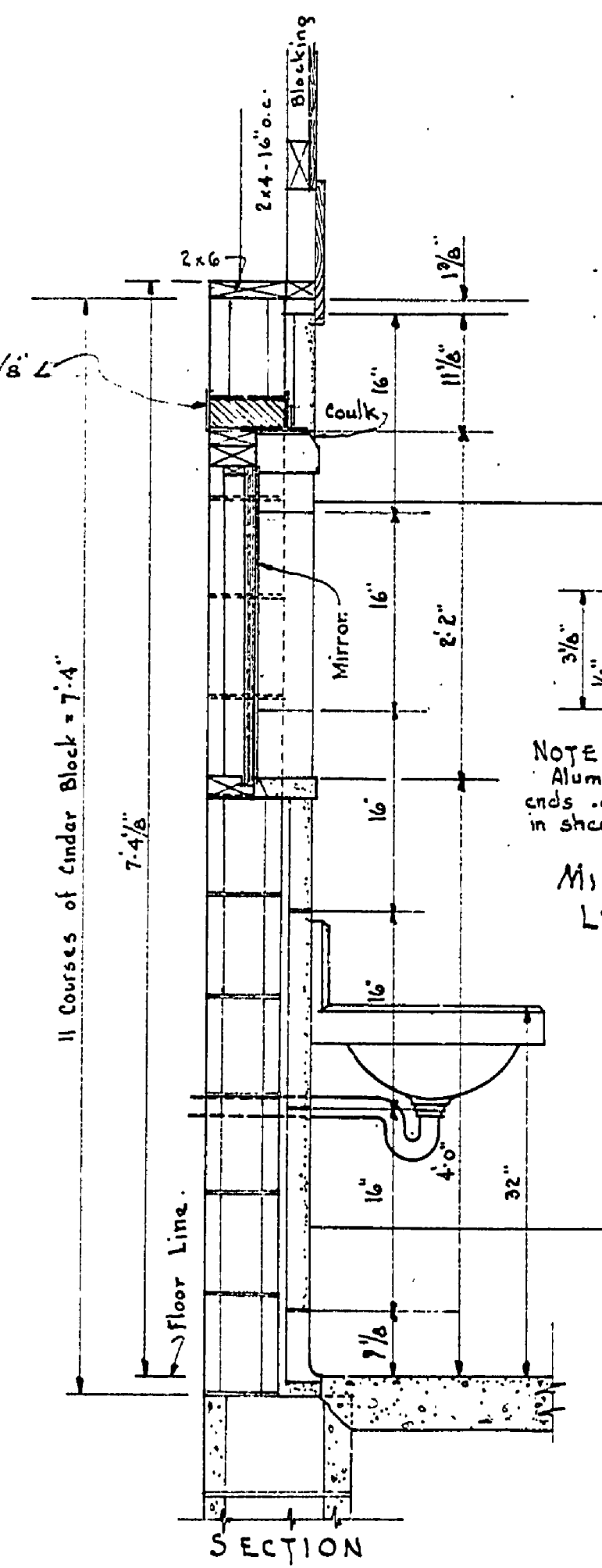
FURRING DETAIL  
CEILING TILE  
Scale 3/4" = 1'-0"



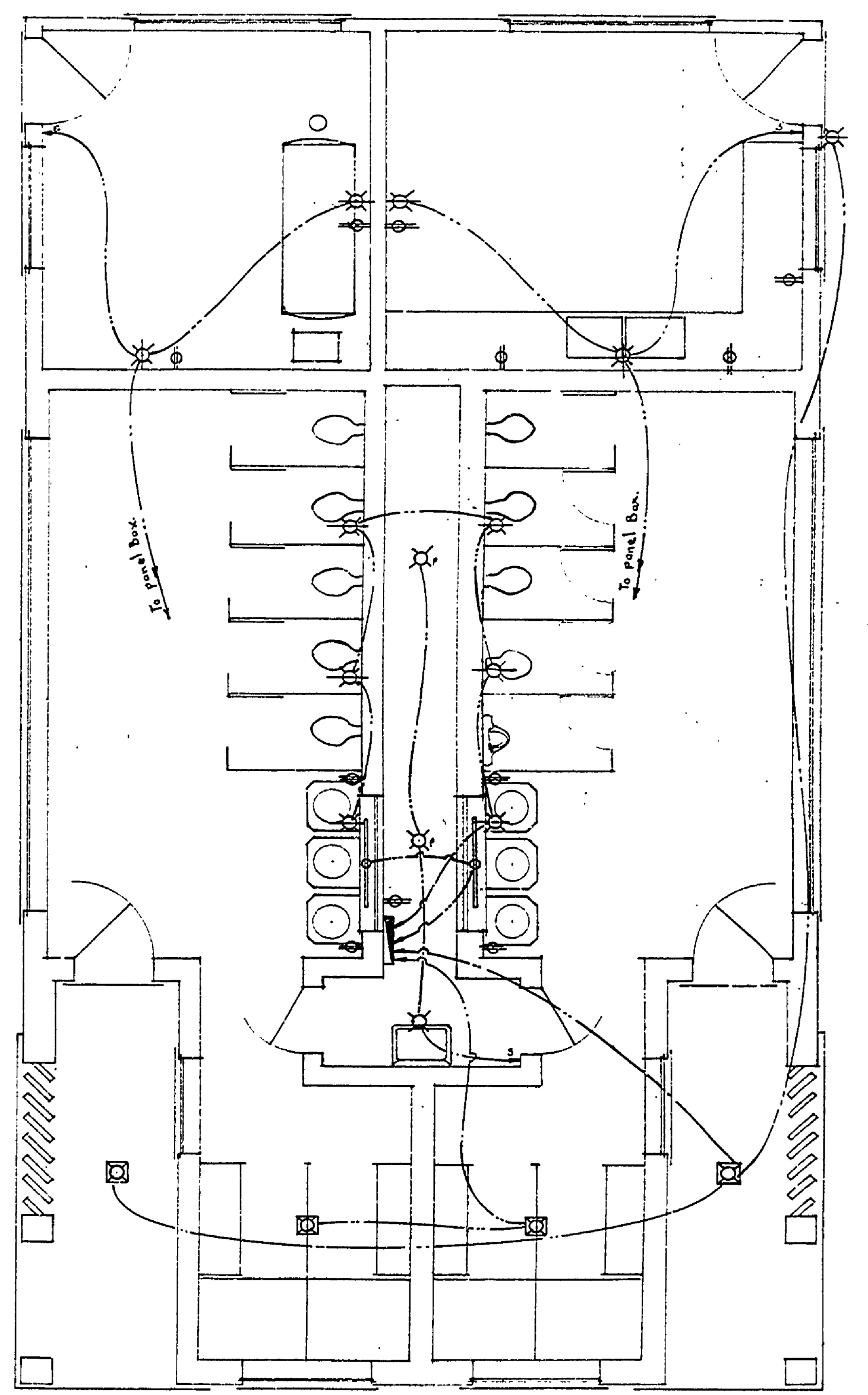
DETAIL EDGE OF CEILING TILE  
Scale Full Size



SECTION R-R



NOTE - Aluminum reflector with solid ends .040 material (formed in sheet metal shop).  
 MIRROR FLOURESCENT LIGHT REFLECTOR  
Scale 3/4" = 1'-0"



ELECTRICAL PLAN  
Scale 1/4" = 1'-0"

- ELECTRICAL SYMBOLS
- Recessed Light Fixture Outlet
  - Duplex Receptacle Outlet
  - Bracket Light Outlet (Fixture by Others)
  - Ceiling Light with Switch
  - Ceiling Light Outlet
  - Wire to Panel Box
  - Fluorescent Light Fixture Outlet
  - Single Switch
  - Panel or Control Box

MICHIGAN  
DEPARTMENT OF CONSERVATION  
PARKS AND RECREATION DIVISION

SLEEPER STATE PARK  
TOILET, LAUNDRY & SHOWER BLDG  
CAMP GROUND.

SHEET NO. 5  
OF 7  
PLAN NO. A-108

PROJECT No. 80-182-1C