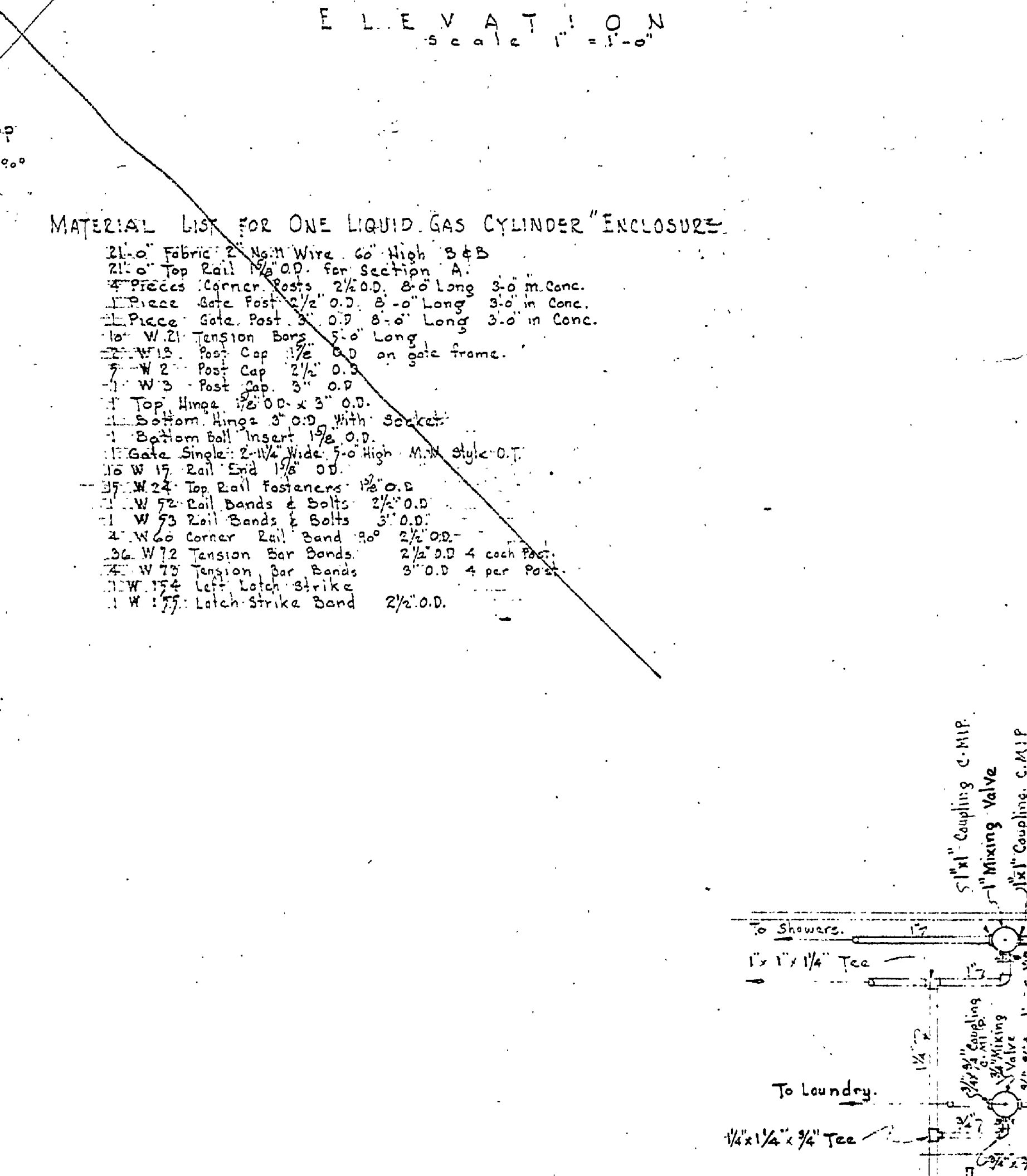
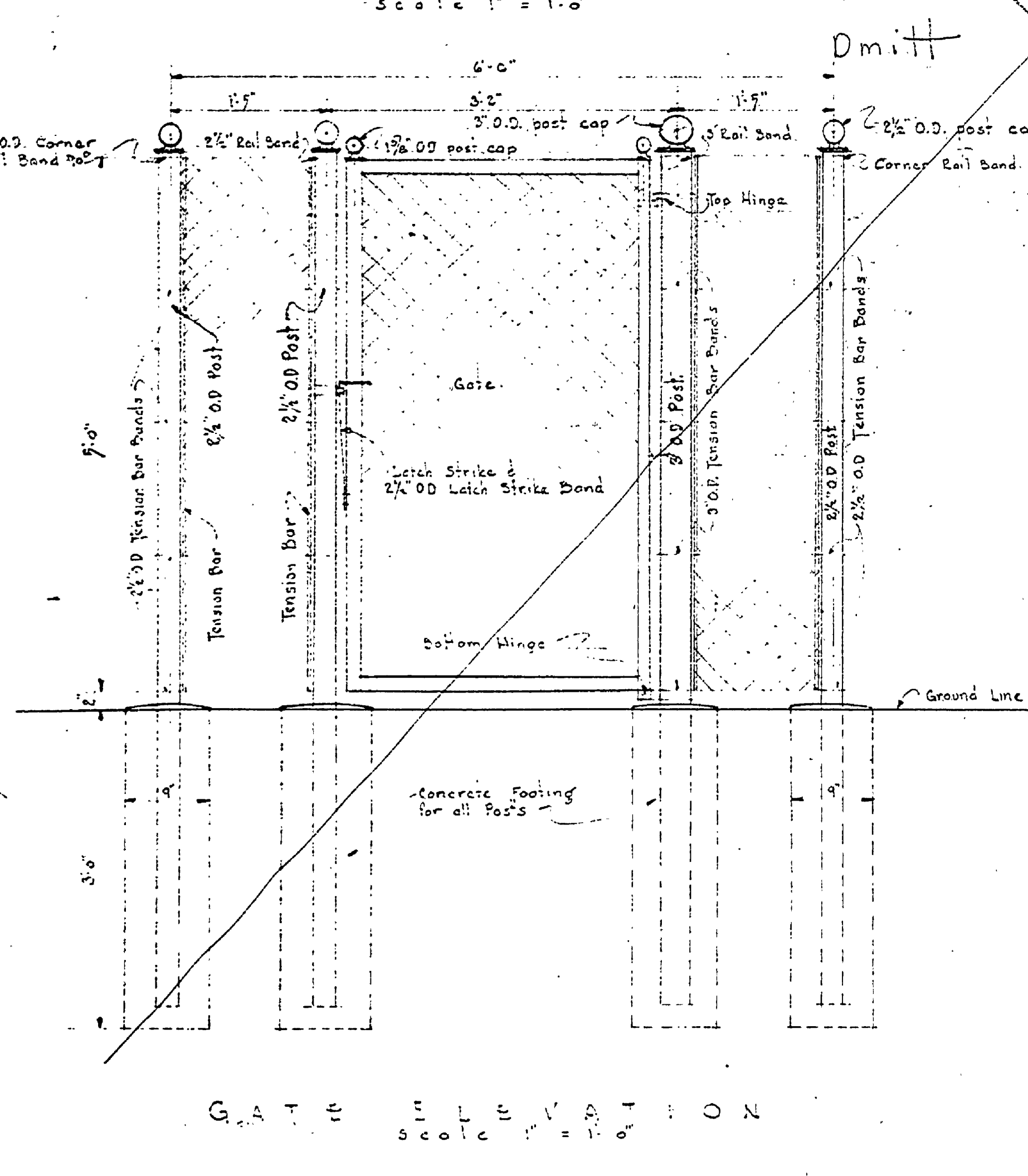
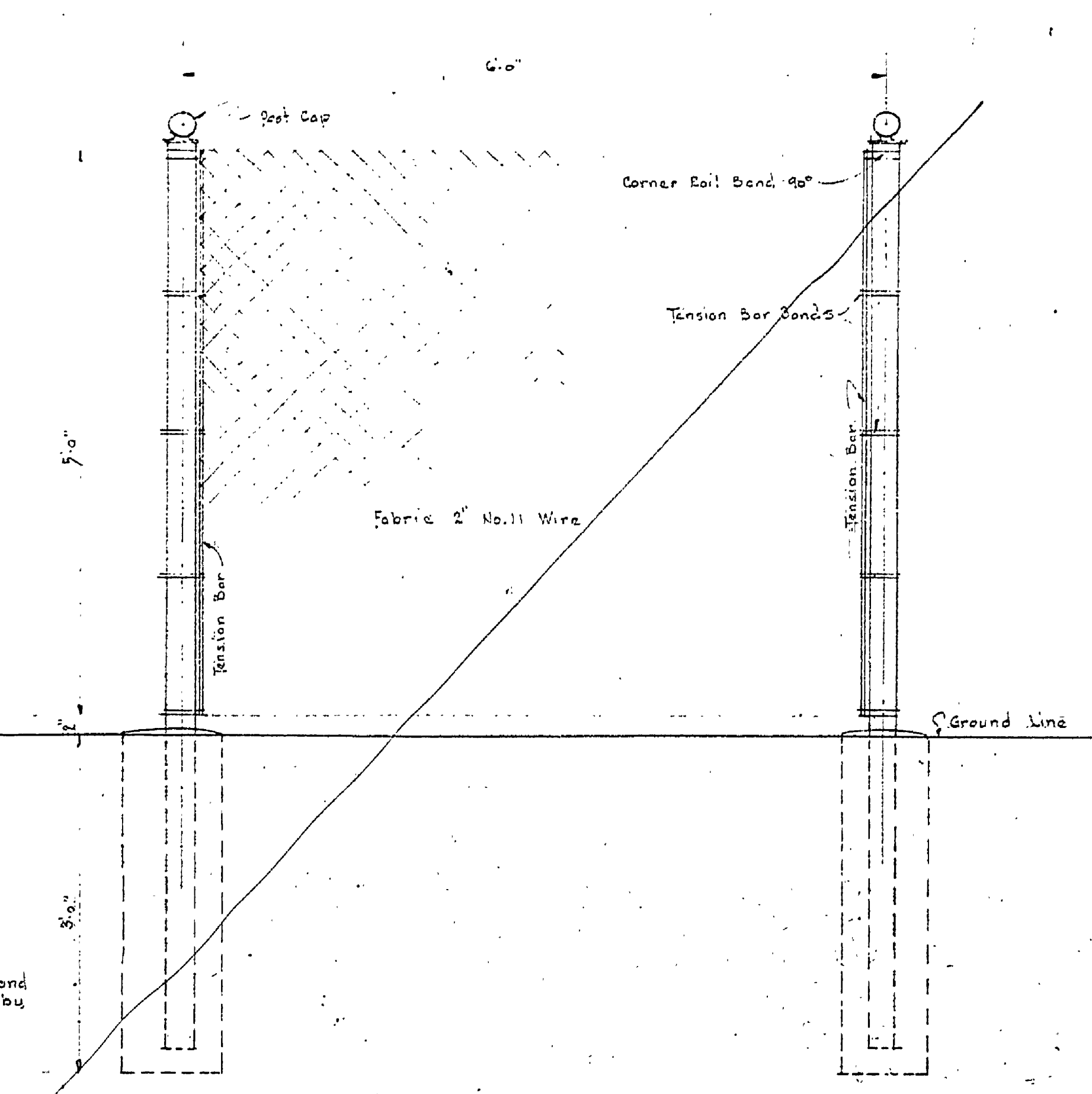
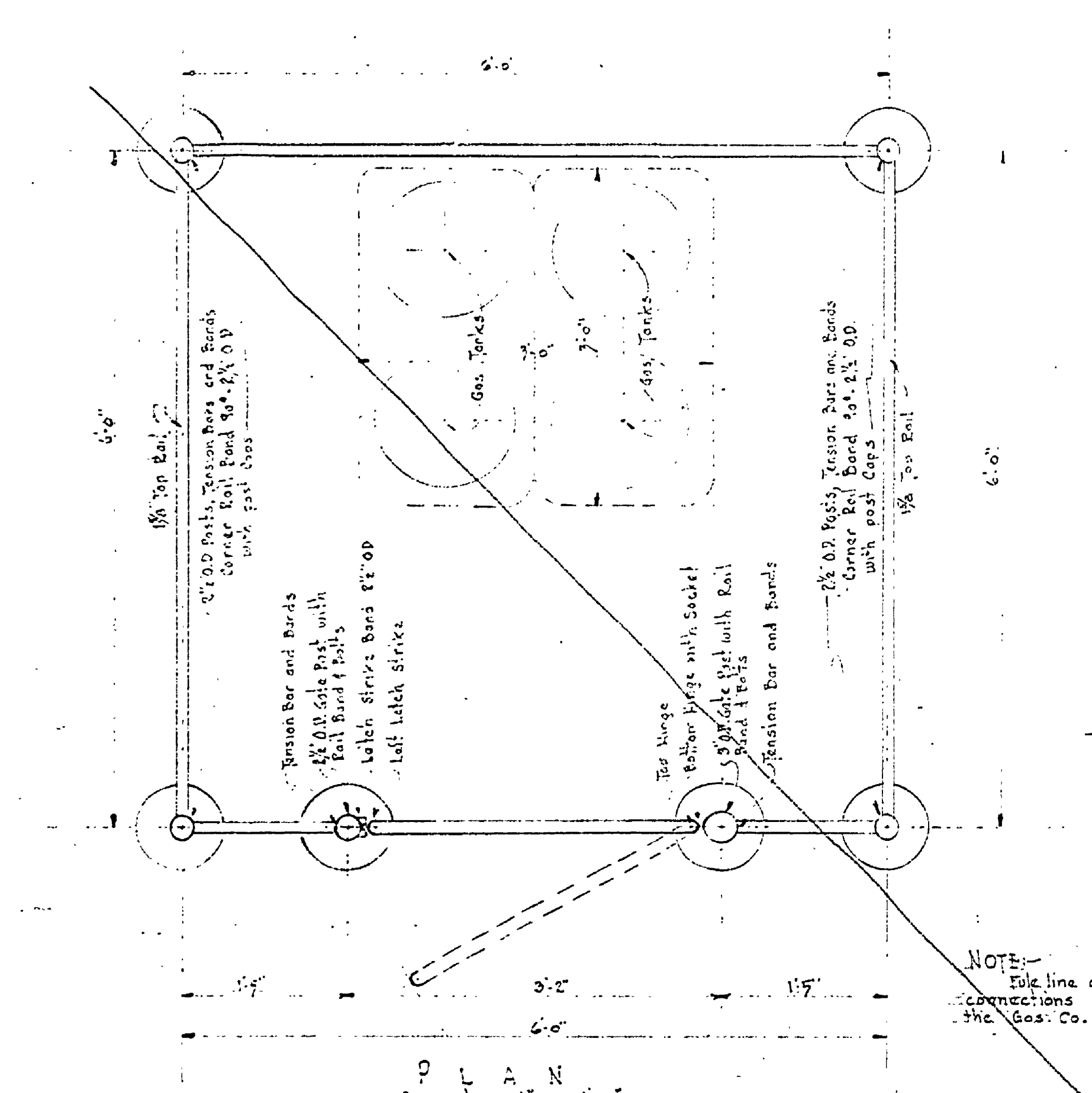


DRAWN BY J.M.F.		REVIEWED BY SECTIONS		APPROVED BY		NO. DATE BY		REVISIONS		DATE BY	
TRACED BY J.M.F.		ARCHITECTURAL		J.M.F. 5-19-54		1		4		1	
CHECKED BY		ENGINEERING		H.C.M. 5-19-54		2		5		2	
DATE		LANDSCAPE		J.M.F. 5-19-54		3		6		3	
				ASSISTANT CHIEF IN CHARGE							
				OF DESIGN							



- MATERIAL LIST FOR ONE LIQUID GAS CYLINDER ENCLOSURE**
- 21'-0" Fabric: No. 11 Wire 60" High B&B
 - 21'-0" Top Rail 1 1/2" O.D. for Section A.
 - 4 Pieces Corner Posts 2 1/2" O.D. 8'-0" Long 3/4" Conc.
 - 1 Piece Gate Post 2 1/2" O.D. 8'-0" Long 3/4" Conc.
 - 1 W 21 Tension Bar 7'-0" Long
 - 4 W 3 Post Cap 2 1/2" O.D. on gate frame.
 - 4 W 3 Post Cap 2 1/2" O.D.
 - Top Hinge 2'-0" O.D. x 3'-0" O.D.
 - Bottom Hinge 3'-0" O.D. with Socket
 - Bottom Rail Insert 1 1/2" O.D.
 - Gate Single 2 1/2" Wide 7'-0" High 1/4" Thick 0.7
 - W 17 Rail End 1 1/2" O.D.
 - W 24 Top Rail Fastener 1 1/2" O.D.
 - W 22 Rail Bands & Bolts 2 1/2" O.D.
 - W 23 Rail Bands & Bolts 3'-0" O.D.
 - W 26 Corner Rail Band 3/4" 2 1/2" O.D.
 - W 12 Tension Bar Bands 2 1/2" O.D. 4 each Post
 - W 14 Left Latch Strike
 - W 17 Latch Strike Band 2 1/2" O.D.

